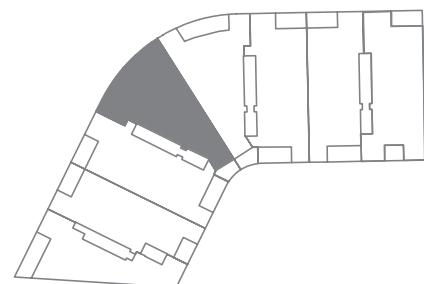
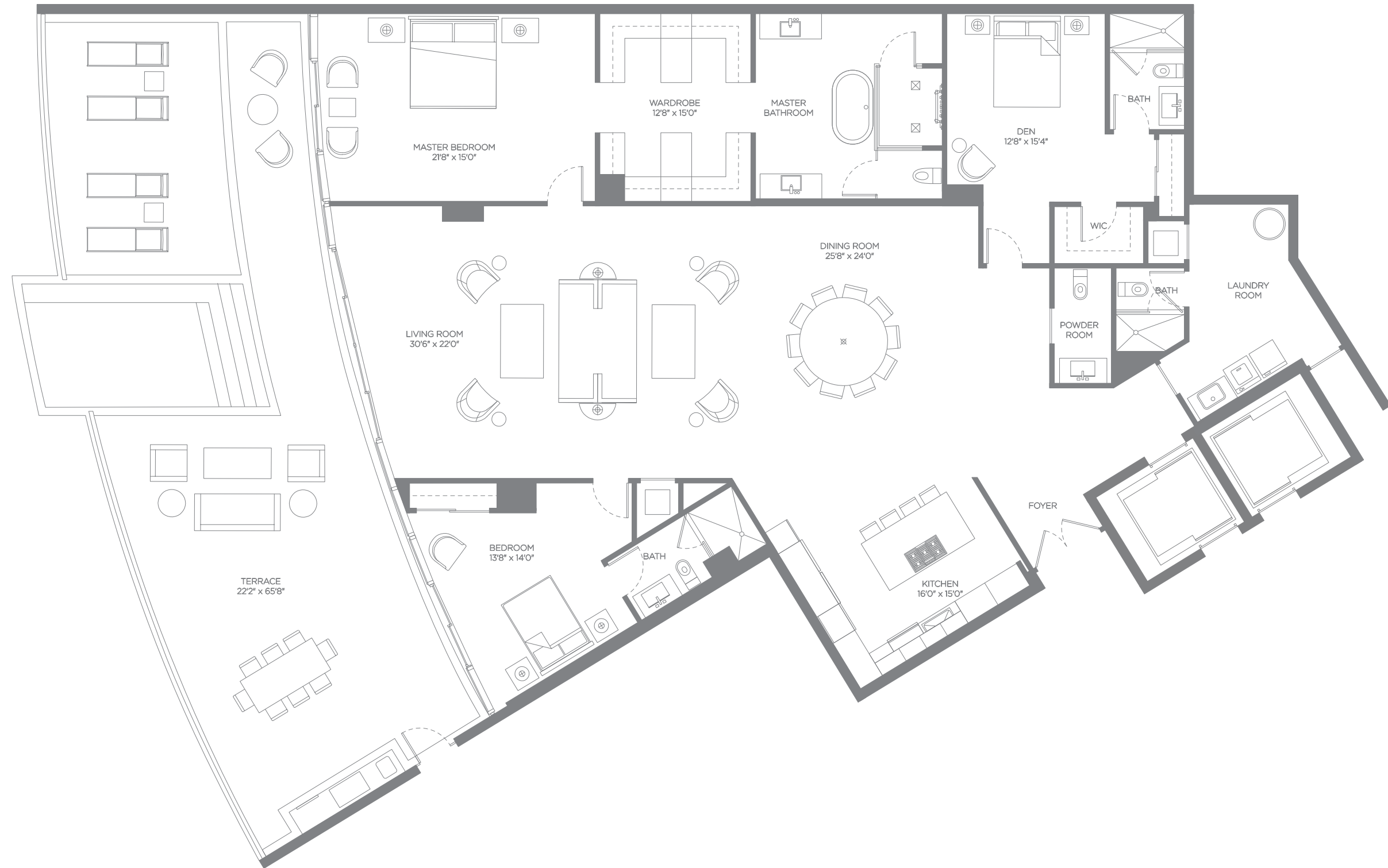


RESIDENCE Dr LANAI



DESCRIPTION

Bedrooms: 2
Bathrooms: 4.5
Dens: 1

SIZE

Interior: 3,550 SqFt
Exterior: 1,485 SqFt
Total: 5,035 SqFt

All depictions of matters of detail shown hereon, including, without limitation, items of finish, furniture and decoration, are conceptual only and are not necessarily included in the Unit. Furnishings are only included if and to the extent provided in your purchase agreement. Stated square footages and dimensions shown hereon are approximate and are measured to the exterior face of exterior walls and to the center line of demising walls. This method of measurement varies from, and is larger than, the dimensions that would be determined by using the description and definition of the "Unit" set forth in the Declaration (which generally only includes the interior airspace between the perimeter walls and excludes interior structural components). For your reference, the area of the Unit, determined in accordance with these defined unit boundaries, is referenced on Exhibit "3" to the Declaration included in the Prospectus. Note that measurements of rooms set forth on this floor plan are generally taken at the greatest points of each given room (as if the room were a perfect rectangle), without regard for any cutouts. Accordingly, the area of the actual room will typically be smaller than the product obtained by multiplying the stated length times width. All dimensions are approximate and may vary with actual construction, and all floor plans, specifications and other development plans are subject to change and will not necessarily accurately reflect the final plans and specifications for the development. 