

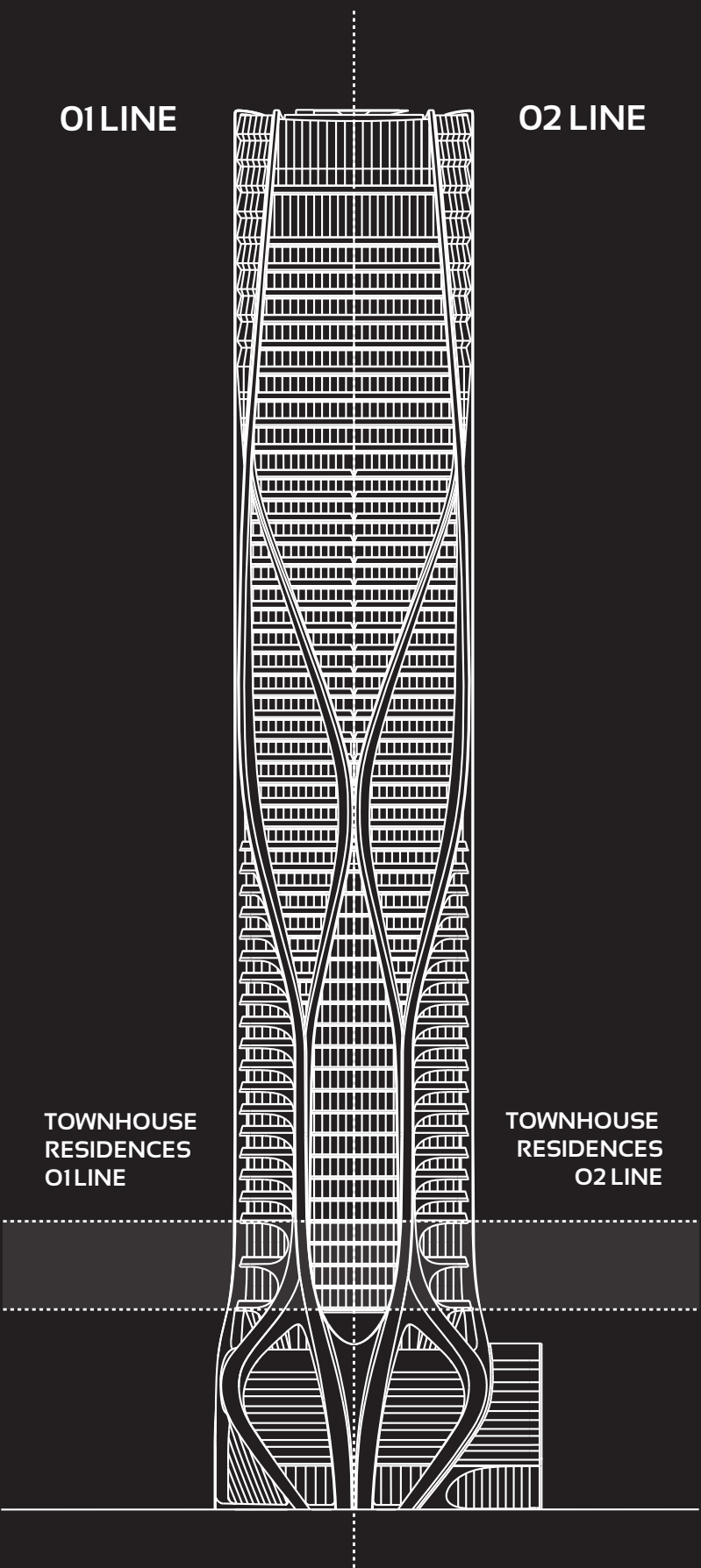
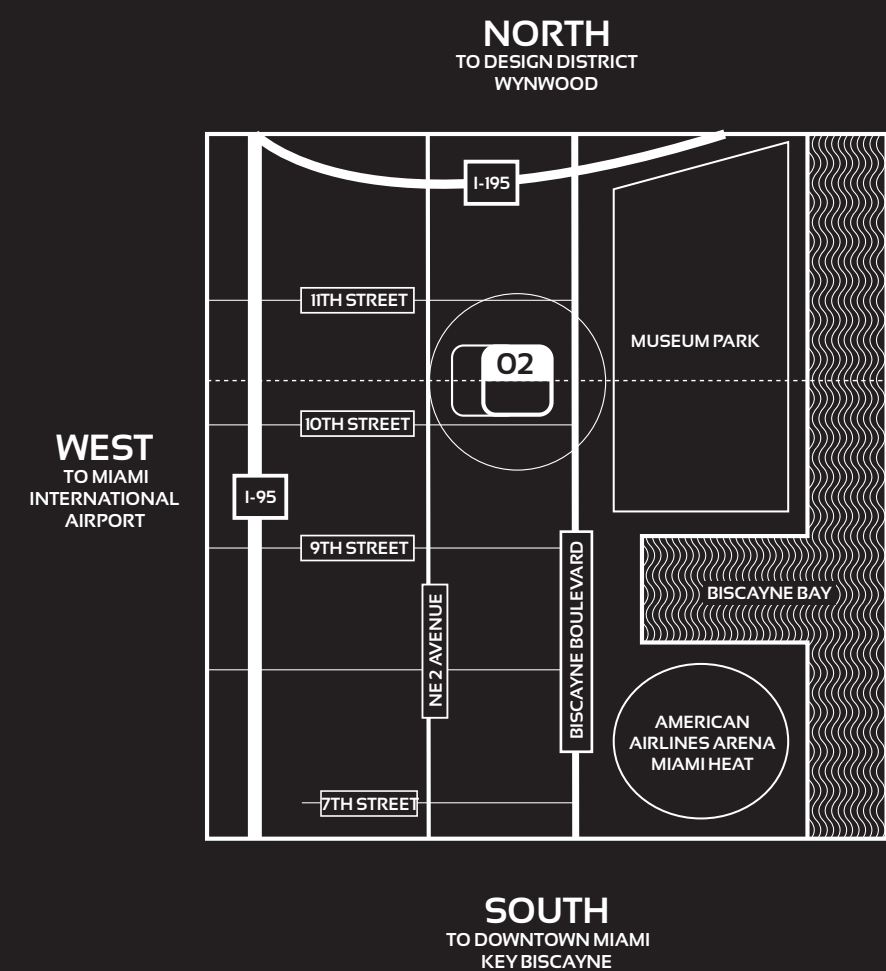
ONE THOUSAND MUSEUM

BY ZAHA HADID

TOWNHOUSE RESIDENCE 1002 - LEVELS 10 - 11

5 BEDROOM - 6.5 BATHROOM

INTERIORS:	8,060 SQFT	749 M²
TERRACES:	834 SQFT	77 M²
TOTAL AREA:	8,894 SQFT	826 M²

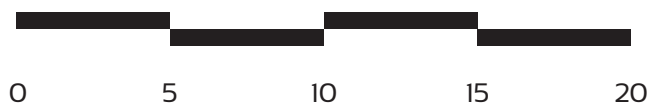
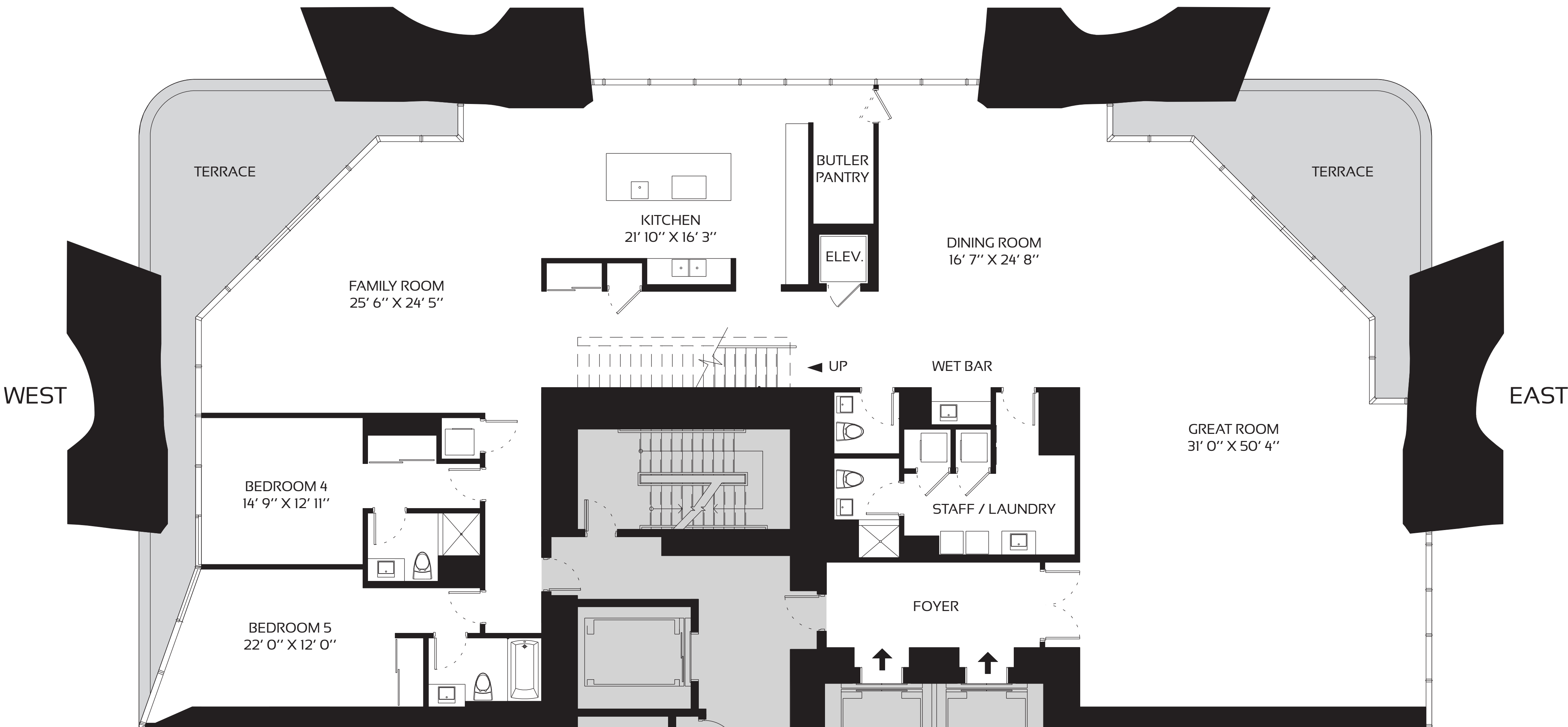
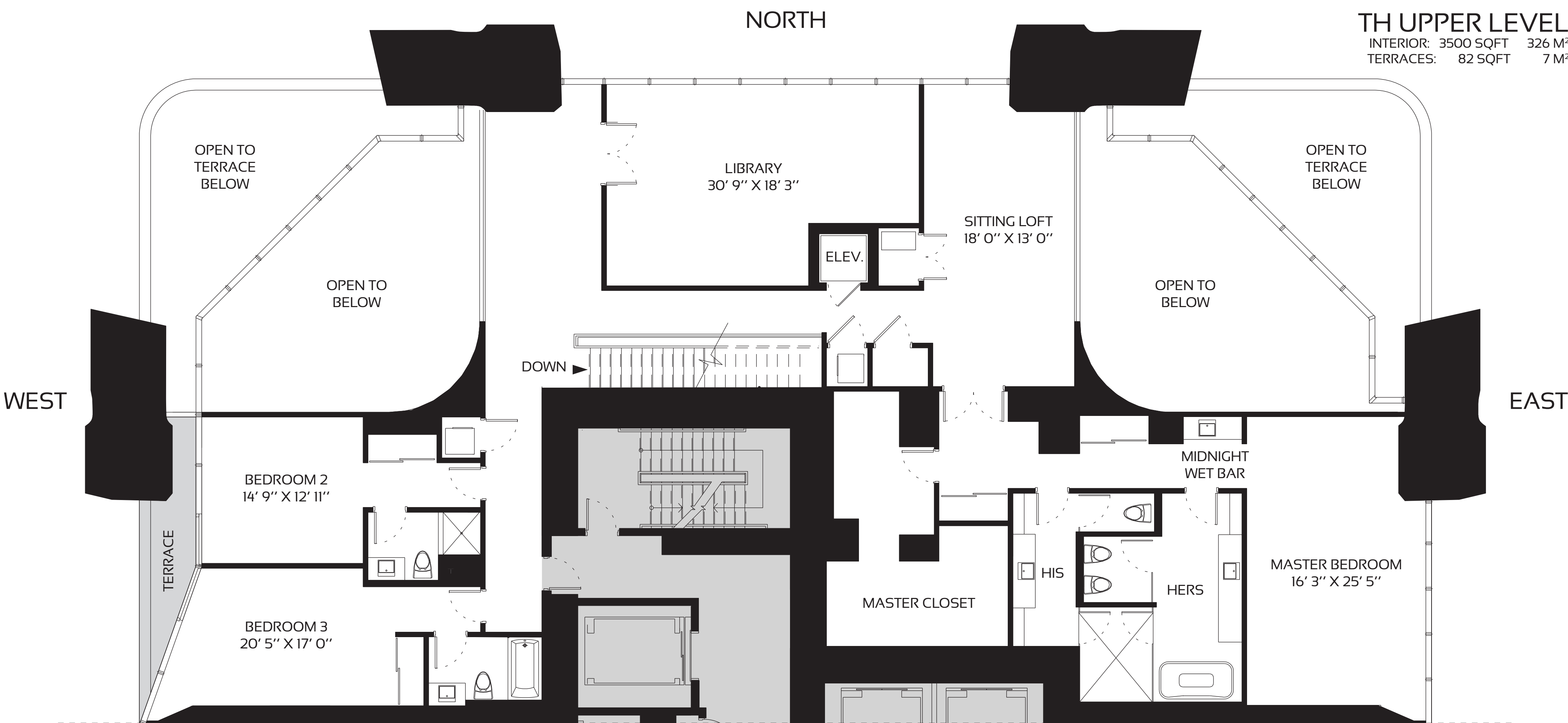


- TOWER FEATURES
- ARCHITECTURE AND AMENITY SPACES DESIGNED BY ZAHA HADID ARCHITECTS
  - LANDSCAPE ARCHITECTURE BY ENZO ENEA
  - MUSEUM-QUALITY INTERIOR AND EXTERIOR ILLUMINATION
  - AMENITY SPACE SCENTING CRAFTED BY 12.29 OLFACTORY CONSULTANTS
  - FUNCTIONALLY INTEGRATED SECURITY AND TECHNOLOGY PROGRAM

- RESIDENTIAL FEATURES
- ESTATE-SIZE HALF-FLOOR, FULL-FLOOR, AND DUPLEX RESIDENCES
  - MULTIPLE OVERSIZED BALCONIES IN EVERY RESIDENCE
  - CEILING HEIGHTS FROM 10 TO 20 FEET IN MAIN LIVING AREAS
  - FLOOR-TO-CEILING WINDOW WALLS
  - CUSTOMIZED ILLUMINATION DESIGNED BY ULI + FRIENDS
  - INTEGRATED HOME AUTOMATION BY CRESTRON
  - CUSTOM KITCHENS BY GATTO CUCINE WITH GAGGENAU AND SUB-ZERO APPLIANCES

- AMENITIES
- OUTDOOR POOL & RECREATIONAL TERRACE
  - FITNESS CENTER
  - SPA
  - INDOOR AQUATIC CENTER
  - SKY LOUNGE
  - PRIVATE ROOFTOP HELIPAD
  - SECURE ON-SITE PARKING

- SERVICES
- ON-SITE MANAGEMENT PERSONNEL
  - CONCIERGE
  - ON-SITE SECURITY PERSONNEL
  - VALET PARKING



TH UPPER LEVEL  
INTERIOR: 3500 SQFT 326 M²  
TERRACES: 82 SQFT 7 M²

1002 LOWER LEVEL  
INTERIOR: 4560 SQFT 423 M²  
TERRACES: 752 SQFT 70 M²