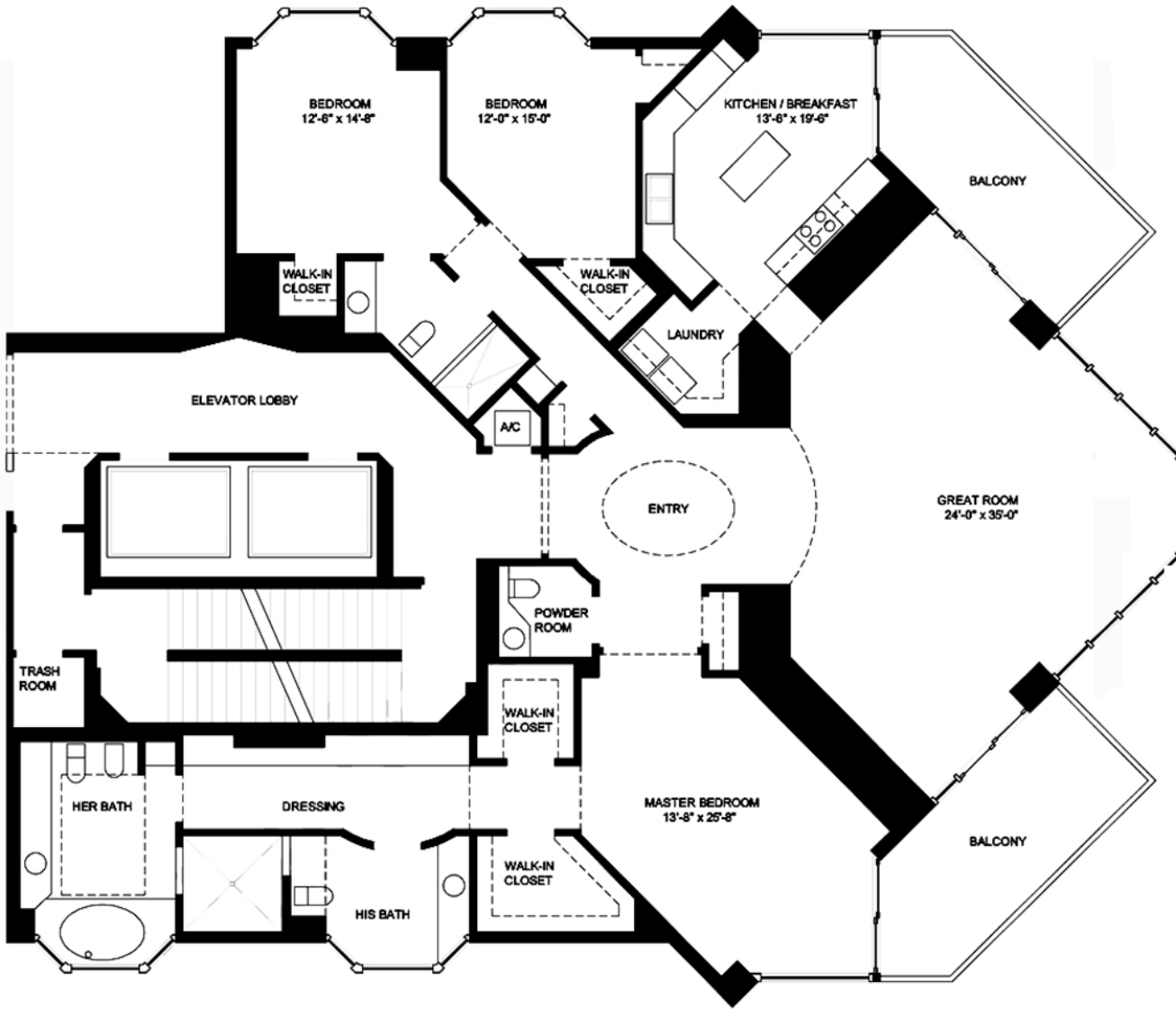


RESIDENCE 03-F
3 BEDROOMS/ 2.5 BATHS

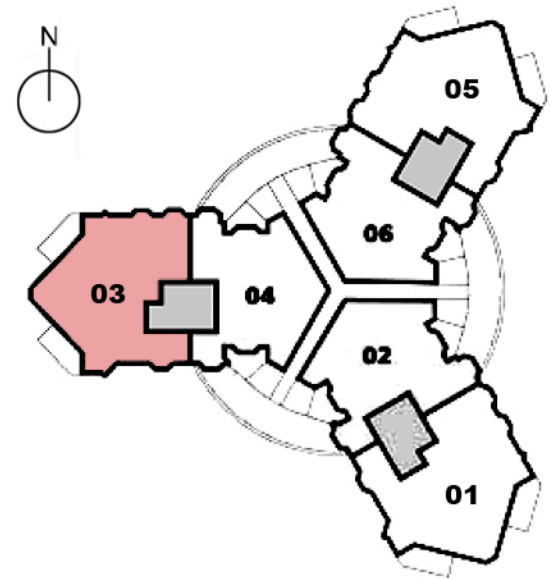
FLOOR PLAN
F
2,861 sq ft.



Contact:
STEVE SAMUELS
Email: ssamuels@condosandcondos.com
Ph: 305.494.1767
Fax: 888.430.3343
Web: www.condosandcondos.com



PORTOFINO
SOUTH BEACH



BISCAYNE BAY