

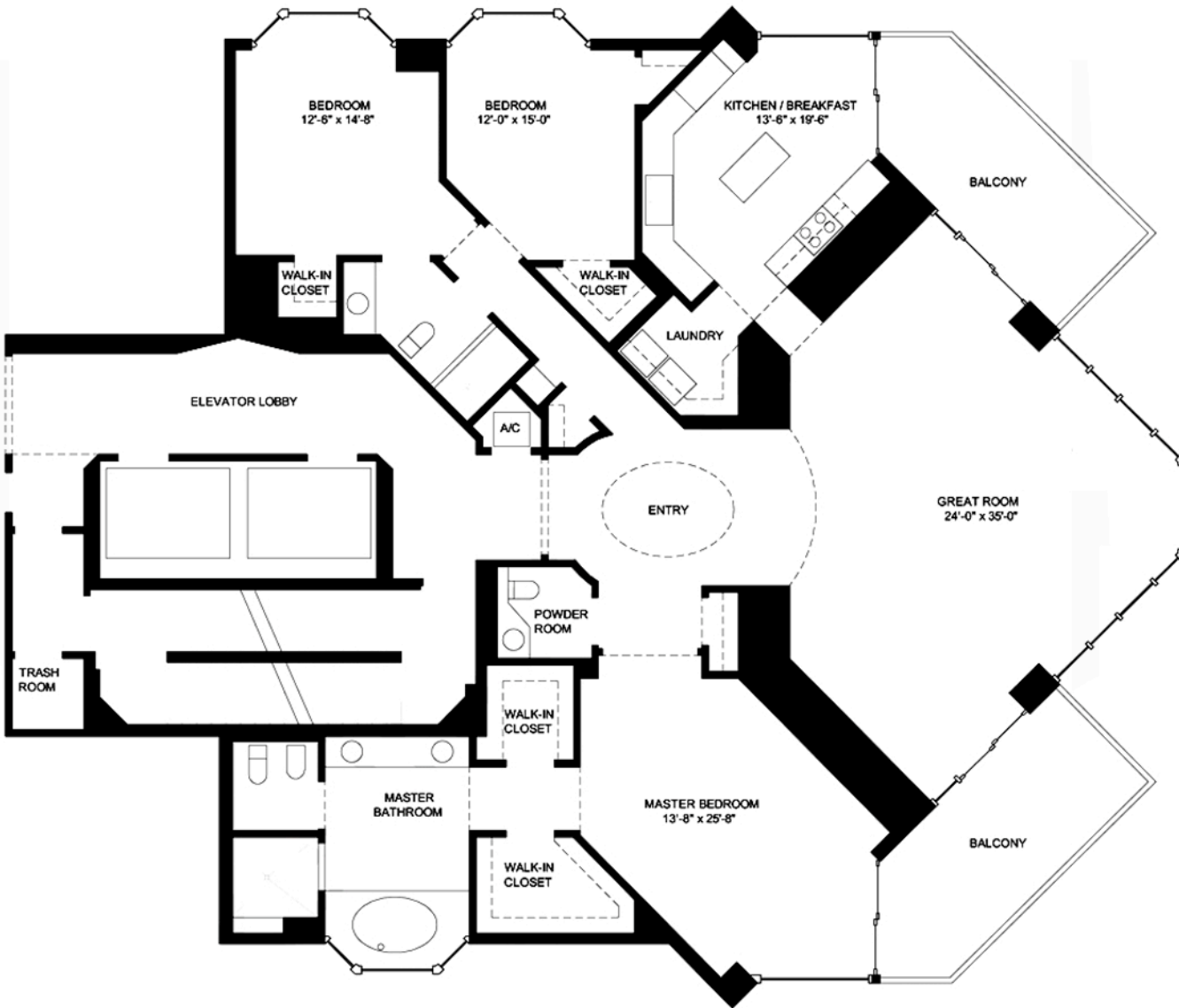
RESIDENCE 01

3 BEDROOMS/ 2.5 BATHS/ DEN

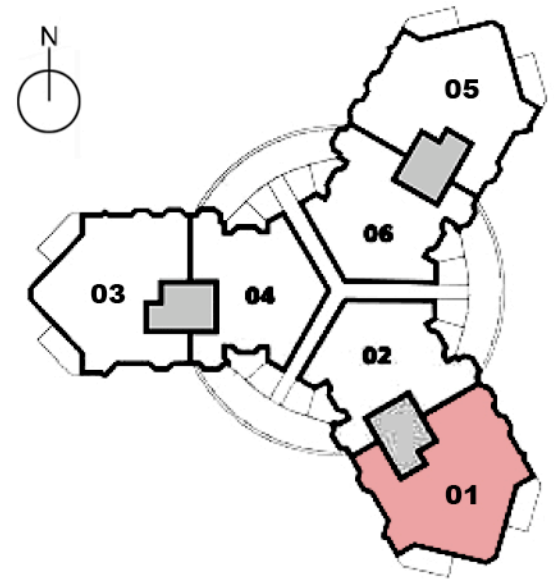
FLOOR PLAN  
D  
2,670 sq ft.



Contact:  
**STEVE SAMUELS**  
Email: [ssamuels@condosandcondos.com](mailto:ssamuels@condosandcondos.com)  
Ph: 305.494.1767  
Fax: 888.430.3343  
Web: [www.condosandcondos.com](http://www.condosandcondos.com)



PORTOFINO  
SOUTH BEACH



BISCAYNE BAY