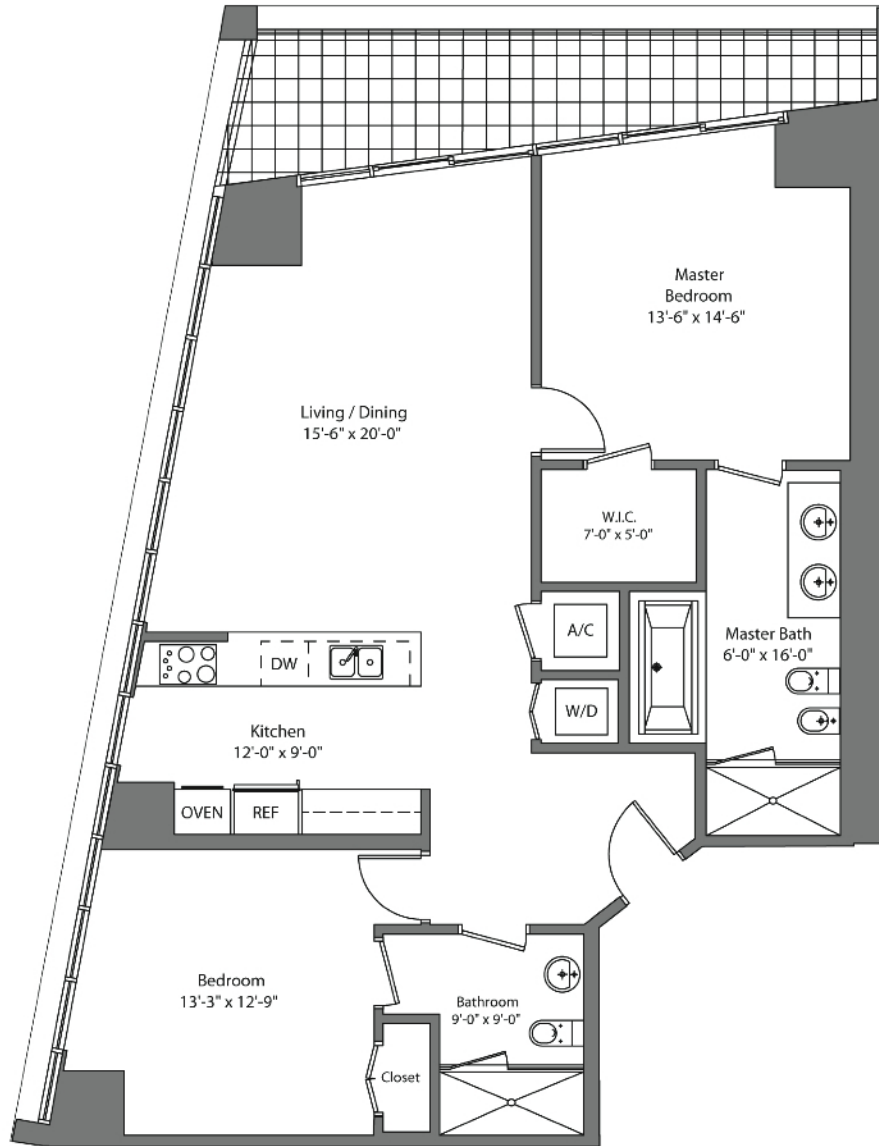




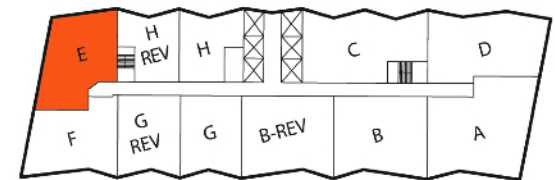
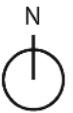
Unit E 2 Bedroom / 2 Bath



Area under AC: 1,327 SF
 Balcony: 146 SF
 Total: 1,473 SF



Contact:
STEVE SAMUELS
 Email: ssamuels@condosandcondos.com
 Ph: 305.494.1767
 Fax: 888.430.3343
 Web: www.condosandcondos.com



BISCAYNE BAY