

# Penthouse 3

Level 10



4 Bedrooms + Office/Den

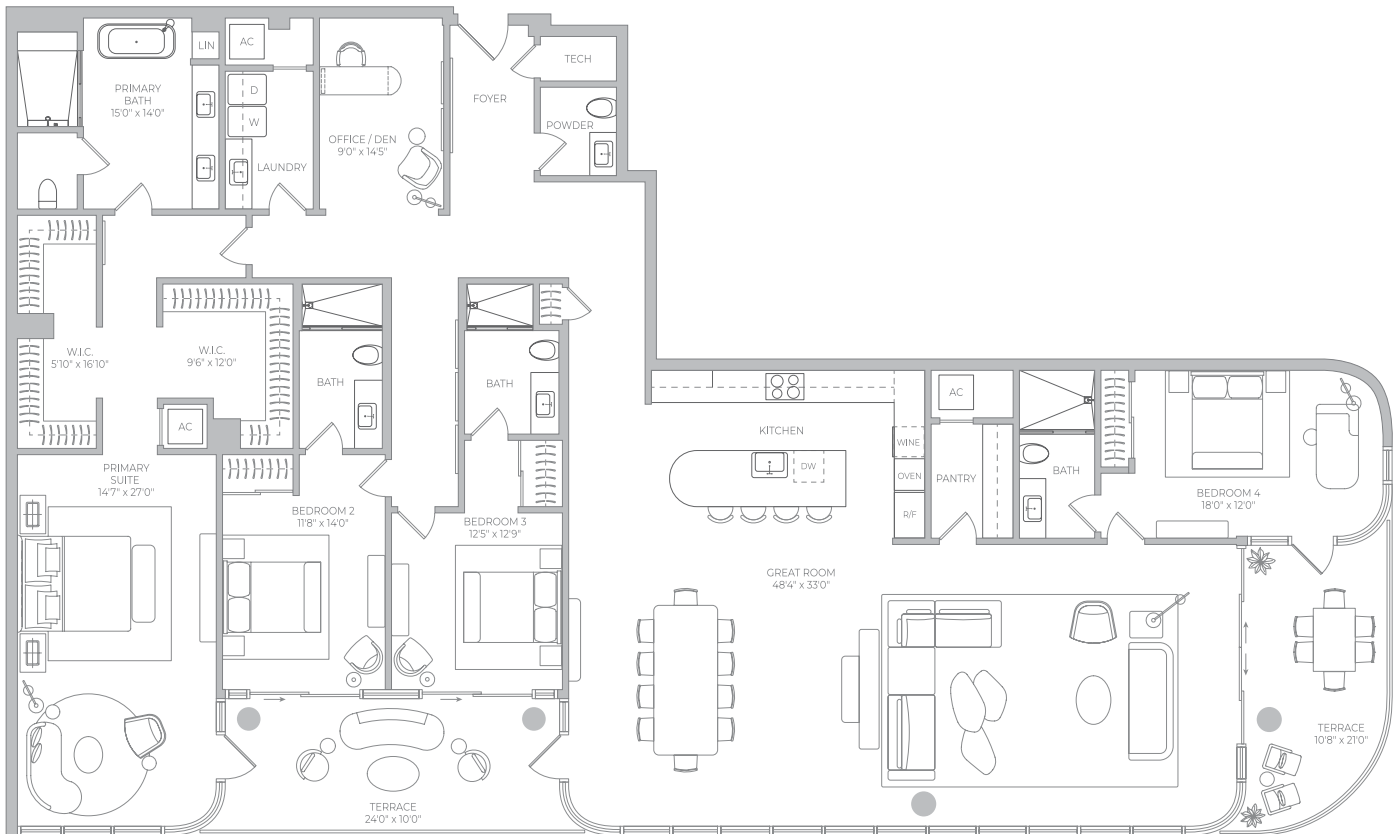
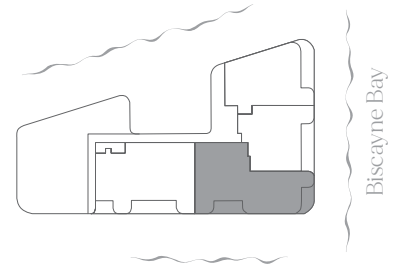
4 Bathrooms

Powder Room

Interior 4,085 f<sup>2</sup> 379.51 m<sup>2</sup>

Terrace 463 f<sup>2</sup> 43.01 m<sup>2</sup>

Total 4,548 f<sup>2</sup> 422.52 m<sup>2</sup>



Biscayne Bay Views