

JADE SIGNATURE

DEVELOPED BY
FORTUNE INTERNATIONAL

CREATED BY
HERZOG & DE MEURON

INTERIOR ARCHITECTURE
PYR LED BY PIERRE-YVES ROCHON

SIGNATURE RESIDENCE MODEL A3N

LINE 05

BUILDING ZONE ZONE C
FLOORS 35-42

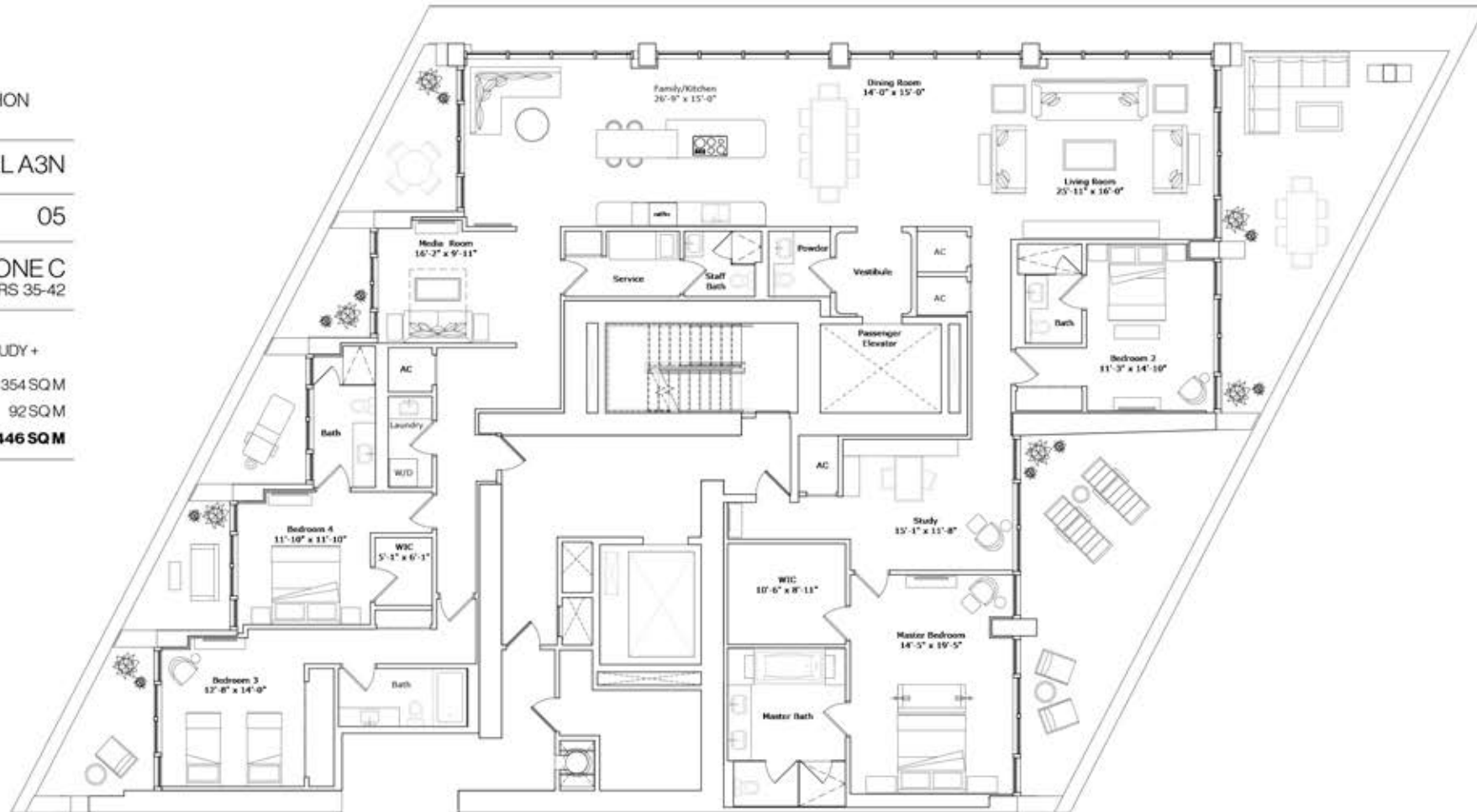
RESIDENCE DESCRIPTION

4 BED/5.5 BATH + FAMILY + MEDIA + STUDY + SERVICE QUARTERS

INTERIOR 3,795 SQFT 354 SQM

OUTDOOR LIVING 986 SQFT 92 SQM

TOTAL 4,781 SQFT 446 SQM



N



ATLANTIC OCEAN