

JADE SIGNATURE

DEVELOPED BY
FORTUNE INTERNATIONAL

CREATED BY
HERZOG & DE MEURON

INTERIOR ARCHITECTURE
PYR LED BY PIERRE-YVES ROCHON

SIGNATURE RESIDENCE MODEL A2N

LINE 05

BUILDING ZONE ZONE B
FLOORS 26-34

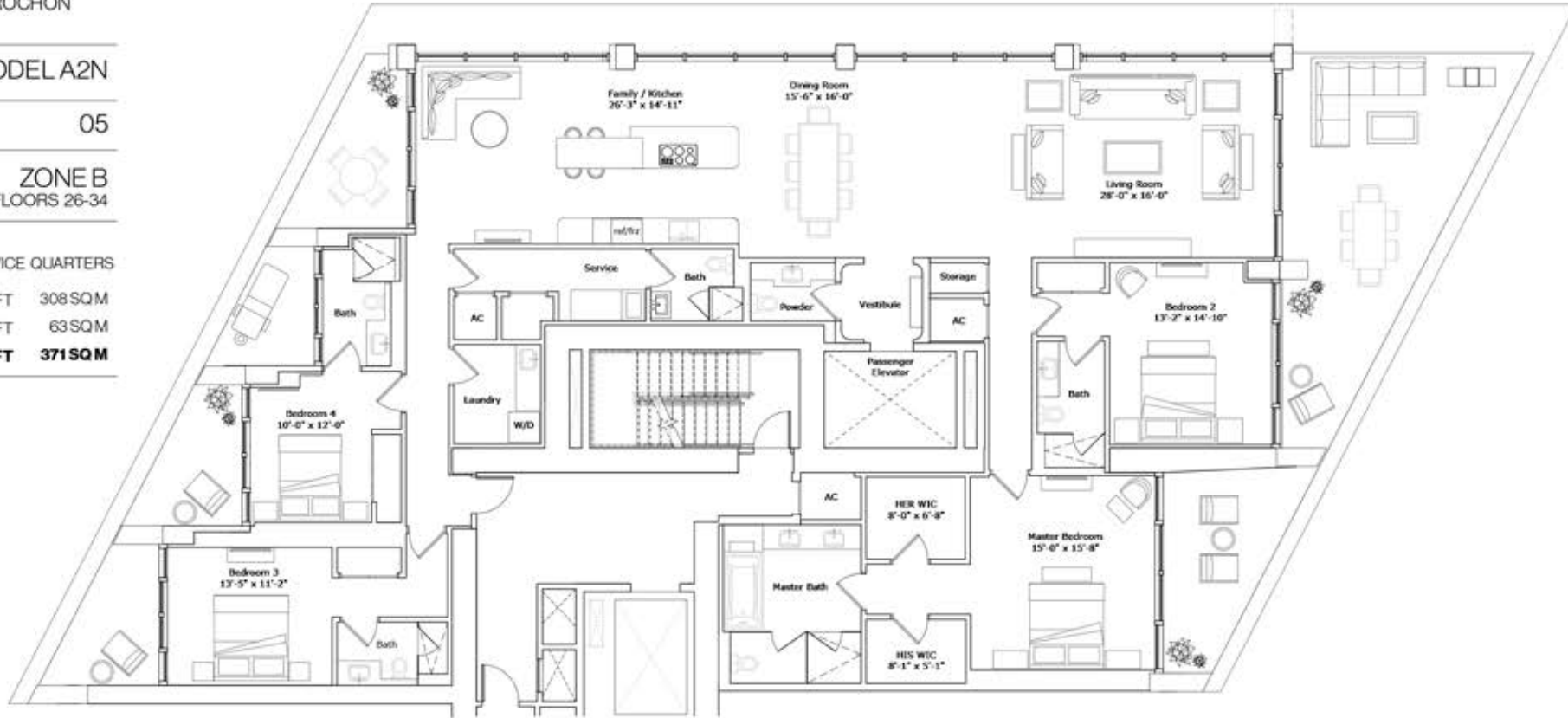
RESIDENCE DESCRIPTION

4 BED/ 5.5 BATH + FAMILY + SERVICE QUARTERS

INTERIOR 3,312 SQFT 308 SQM

OUTDOOR LIVING 674 SQFT 63 SQM

TOTAL 3,486 SQFT 371 SQM



N

ATLANTIC OCEAN

W

E

S

