

JADE SIGNATURE

DEVELOPED BY
FORTUNE INTERNATIONAL

CREATED BY
HERZOG & DE MEURON

INTERIOR ARCHITECTURE
PYR LED BY PIERRE-YVES ROCHON

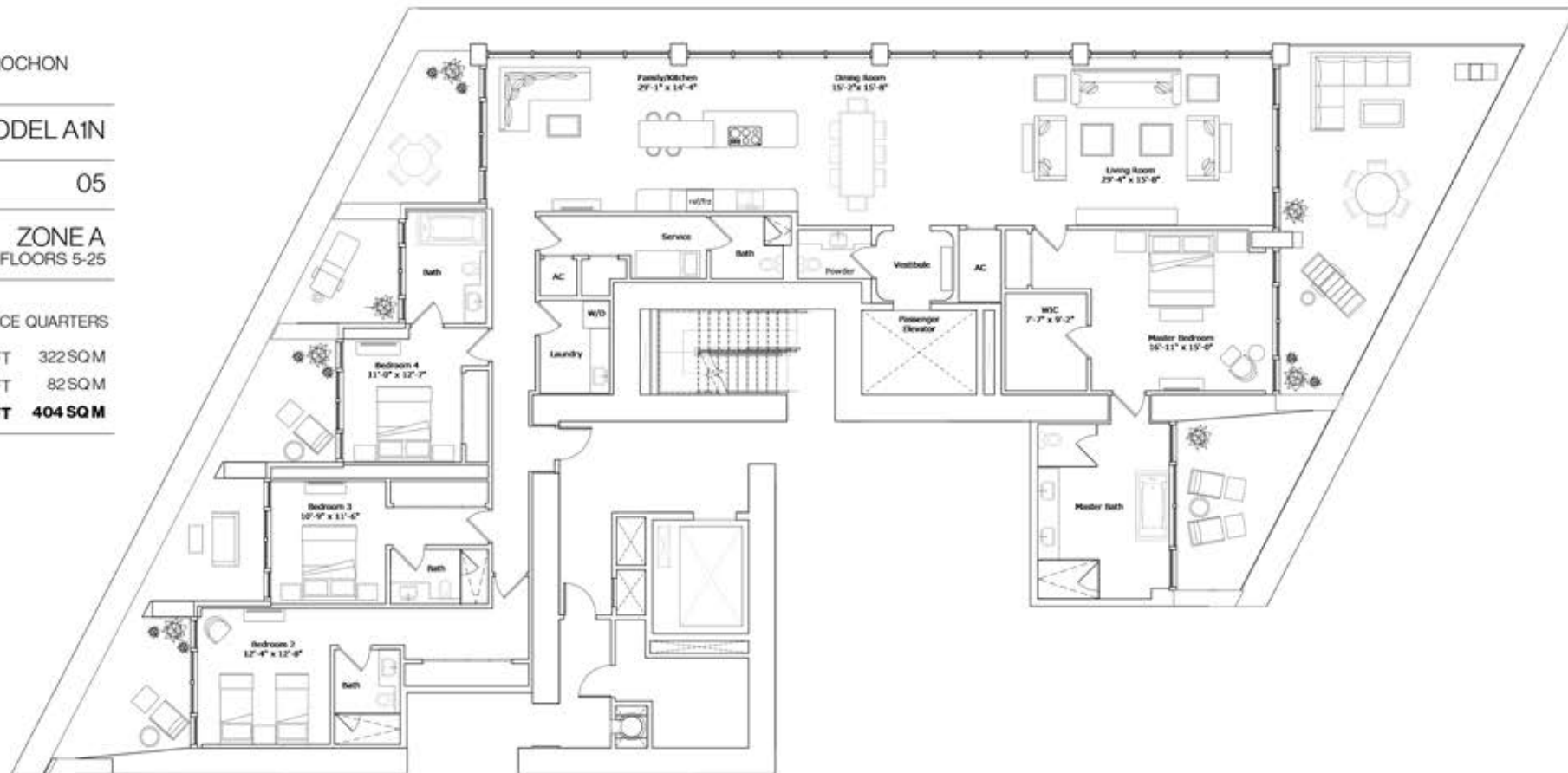
SIGNATURE RESIDENCE MODEL A1N

LINE 05

BUILDING ZONE ZONE A
FLOORS 5-25

RESIDENCE DESCRIPTION
4 BED/5.5 BATH + FAMILY + SERVICE QUARTERS

INTERIOR	3,465 SQ FT	322 SQM
OUTDOOR LIVING	881 SQ FT	82 SQM
TOTAL	4,346 SQ FT	404 SQM



N



ATLANTIC OCEAN

S