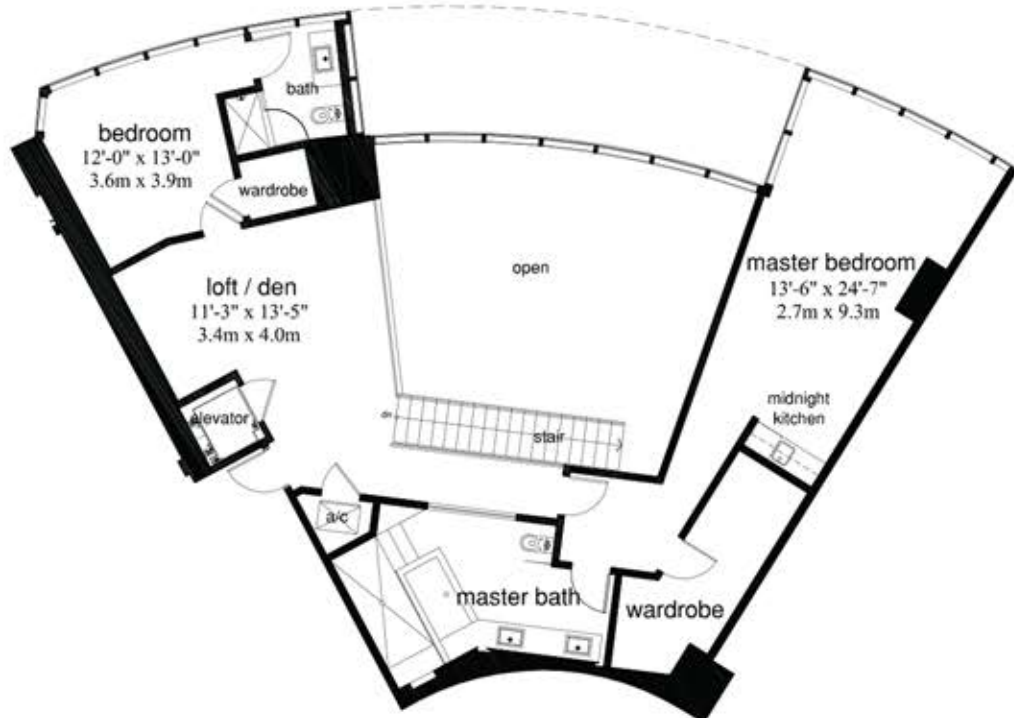




P'0395



Area	Lower [SQ FT M ²]	Upper [SQ FT M ²]	Total [SQ FT M ²]
Interior	1,846 171.4	1,576 146.4	3,422 317.9
Balcony	288 26.7		288 26.7
Garage	542 50.3		542 50.3
Total	2,676 248.4		4,252 394.9