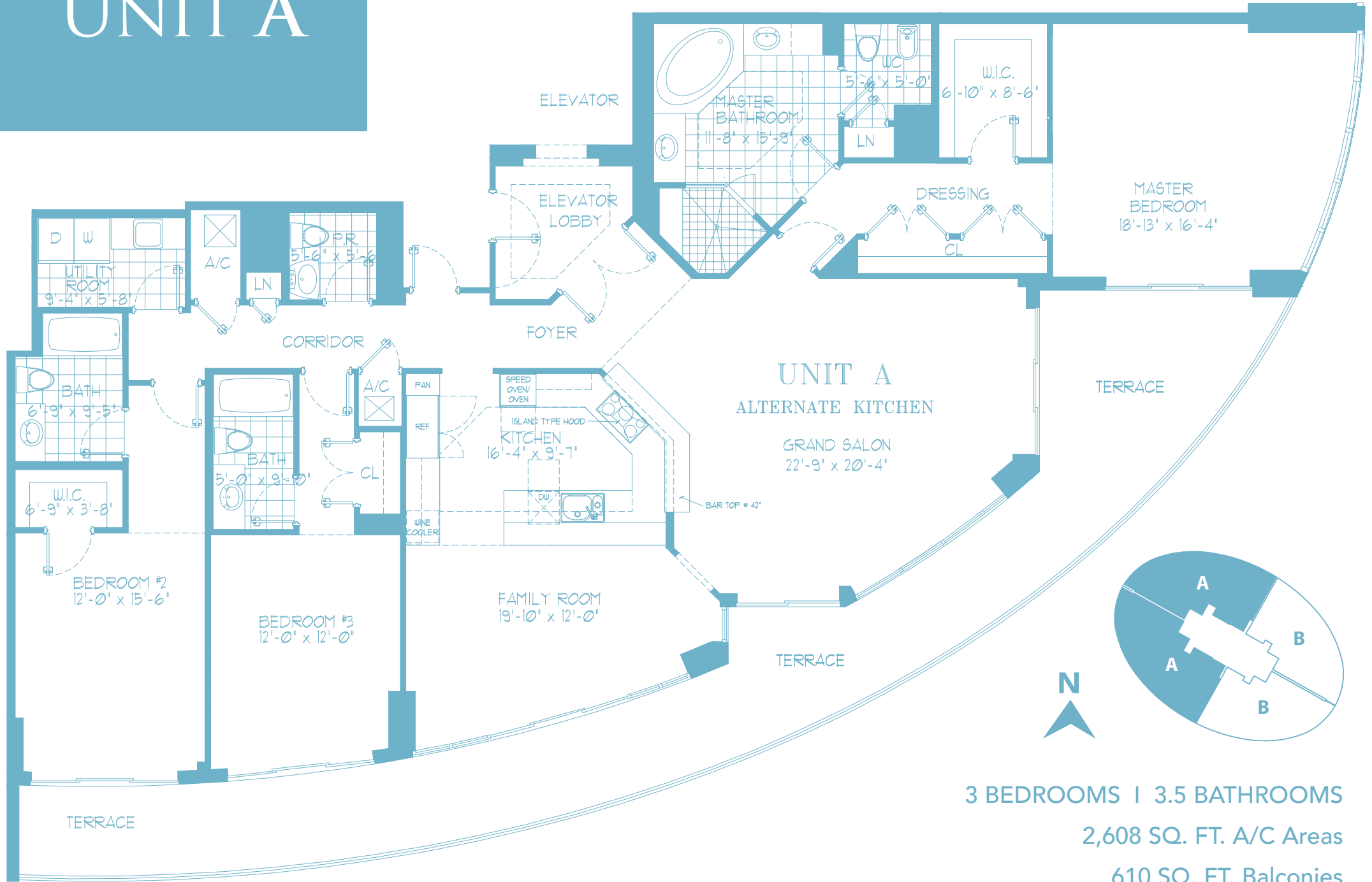


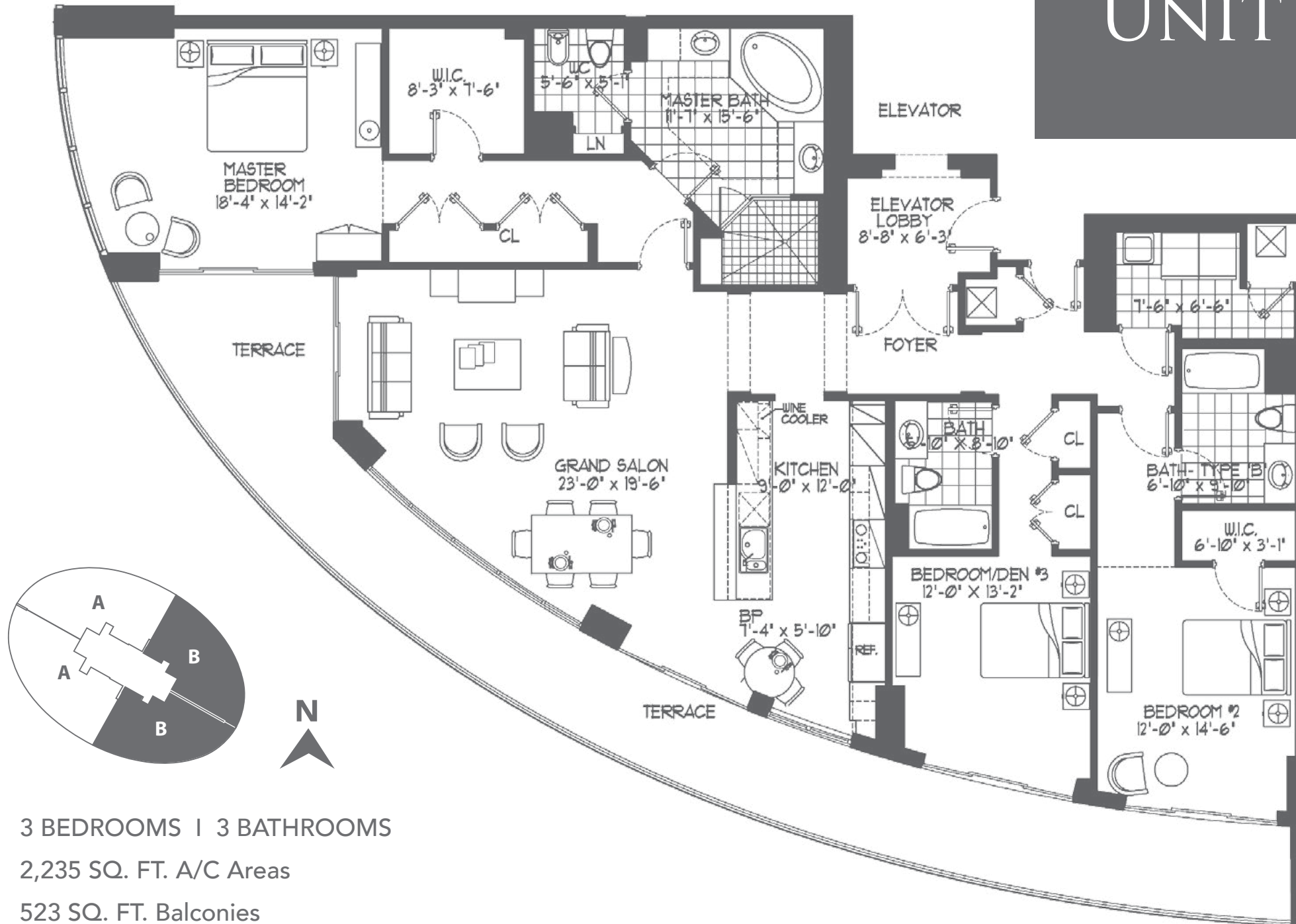
UNIT A



3 BEDROOMS | 3.5 BATHROOMS
 2,608 SQ. FT. A/C Areas
 610 SQ. FT. Balconies

ALL DIMENSIONS, SPECIFICATIONS AND FEATURES ARE APPROXIMATE AND SUBJECT TO CHANGE WITHOUT NOTICE.

UNIT B



3 BEDROOMS | 3 BATHROOMS

2,235 SQ. FT. A/C Areas

523 SQ. FT. Balconies

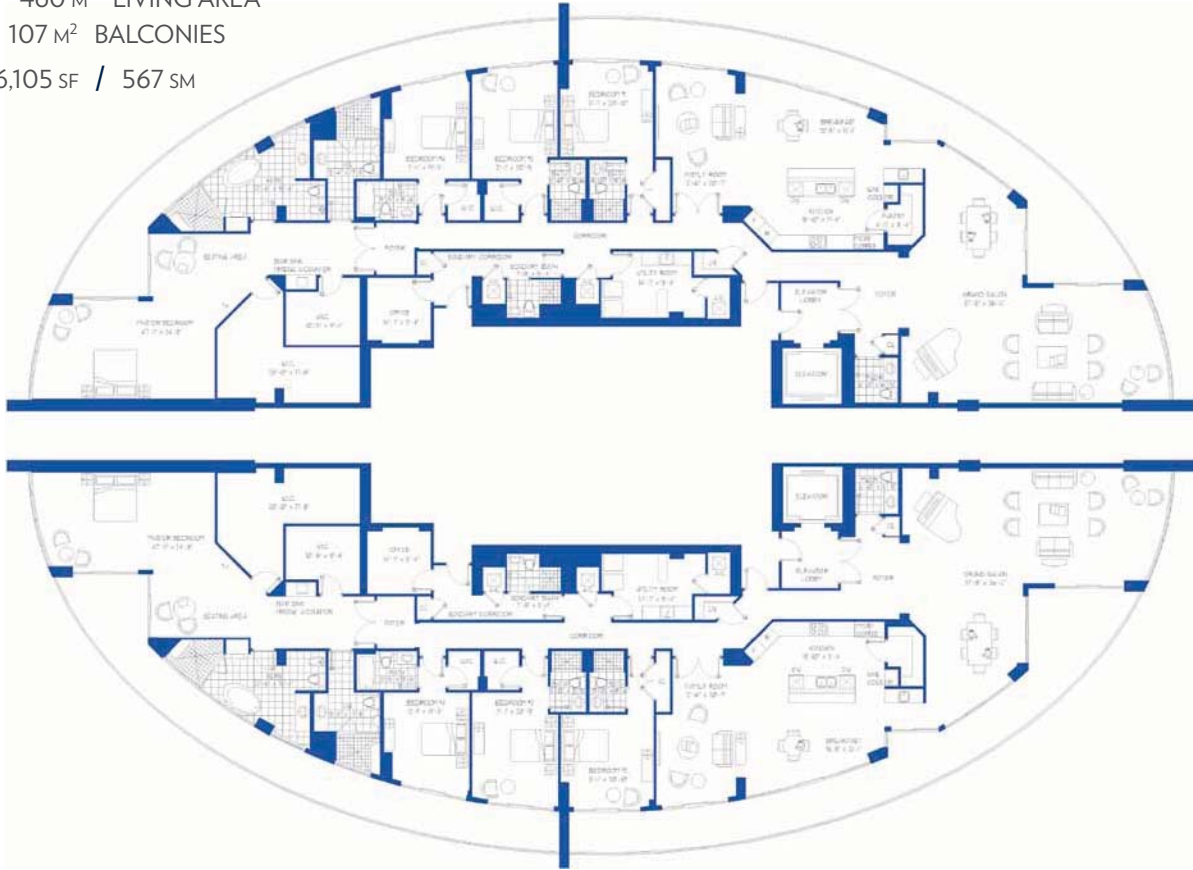
Floor Plan | PENTHOUSE A

4 BEDROOMS, 6.5 BATHROOMS

4,955 SF / 460 M² LIVING AREA

1,150 SF / 107 M² BALCONIES

TOTAL = 6,105 SF / 567 SM



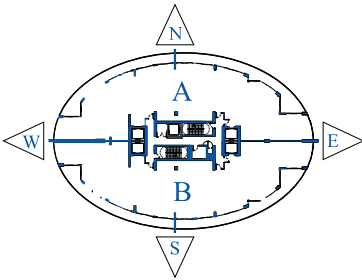
Floor Plan | PENTHOUSE B

4 BEDROOMS, 6.5 BATHROOMS

4,955 SF / 460 M² LIVING AREA

1,150 SF / 107 M² BALCONIES

TOTAL = 6,105 SF / 567 SM



Aerial View

