

THE BEACH FRONT COLLECTION FLOOR PLANS.

Experience oceanside living to the next level – literally – with a five-level, 4,000 sq.ft. villa on a pristine Florida beach. To enjoy multiple indoor and outdoor living spaces, take your 5-level elevator from the 2-car garage to the main living area, the guest and entertainment area, the master suite or all the way up to the expansive rooftop patio.

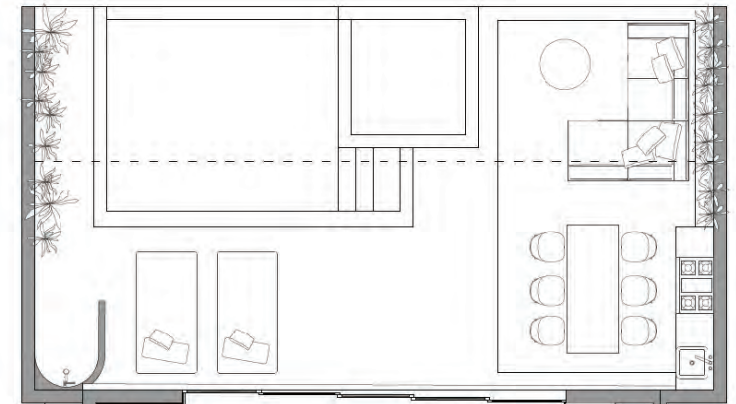
ALL FLOOR PLANS ARE FOR ILLUSTRATIVE PURPOSES ONLY AND ARE NOT TO SCALE. SPECIFICATIONS, DIMENSIONS, AND LAYOUTS MAY BE SUBJECT TO CHANGE. THIS DOCUMENT DOES NOT FORM PART OF ANY LEGALLY BINDING AGREEMENT.

SECOND FLOOR

LIVING AND OUTDOOR

Second Floor Kitchen, Living, Stairs, Elevator: 1,046 Sf

Second Floor Pool And Deck Area: 687 Sf

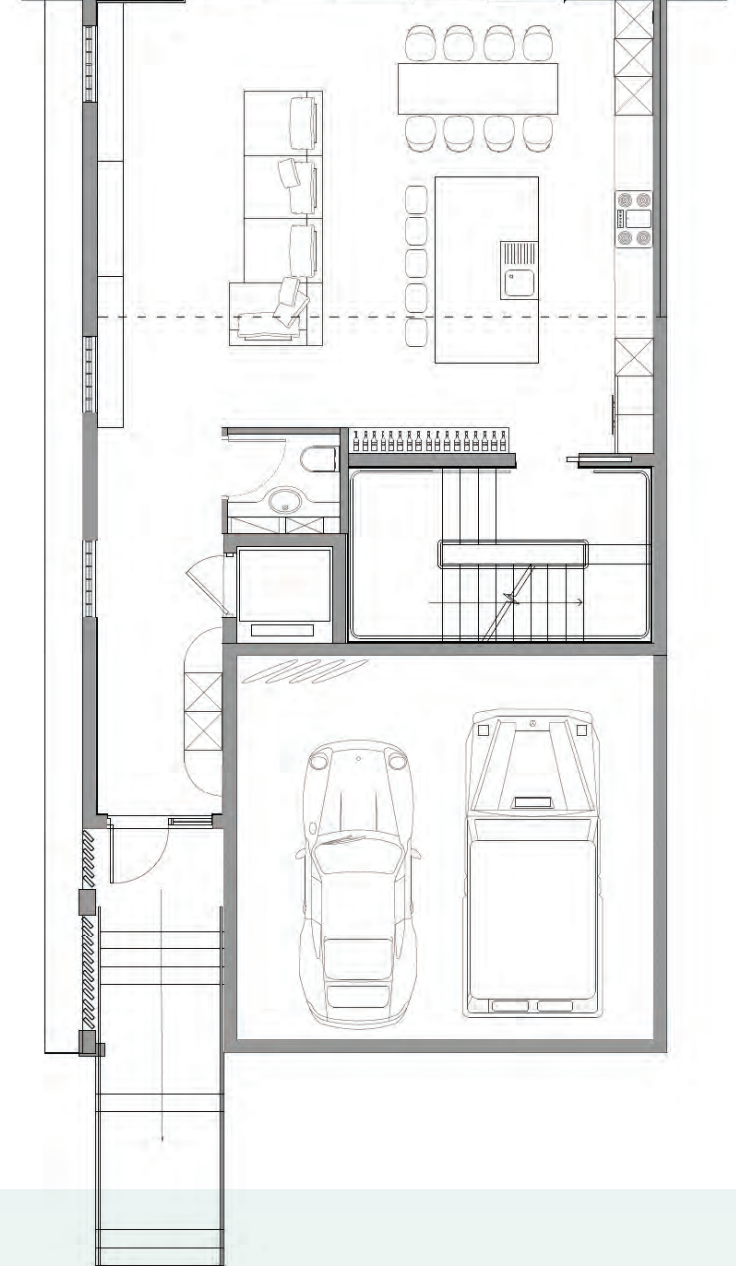
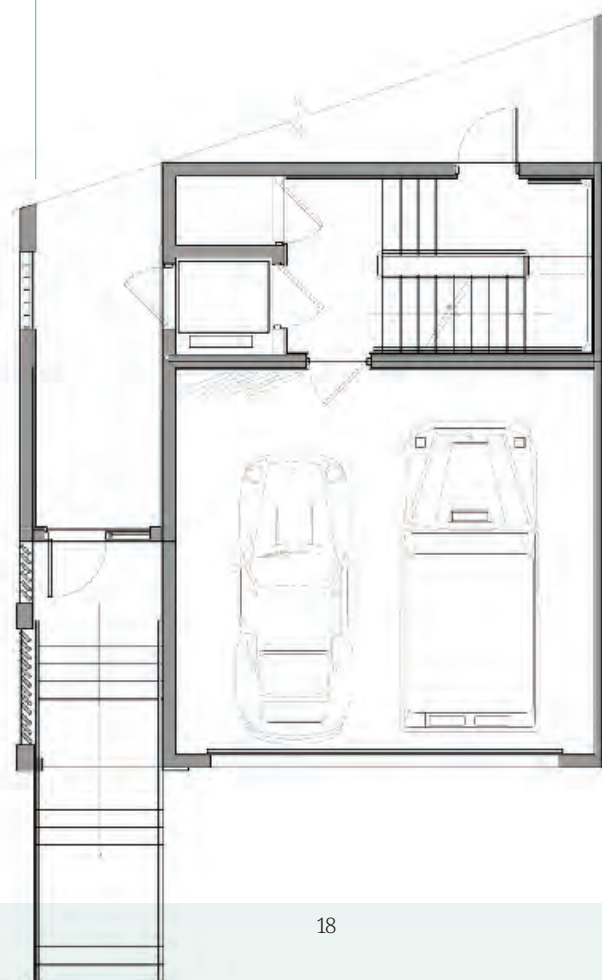


FIRST FLOOR

GARAGE AND ENTRANCE STAIRS

Garage And Elevator / Stair Vestibule: 708 Sf

First Floor Exterior Stair Entry to Second Floor: 152 Sf



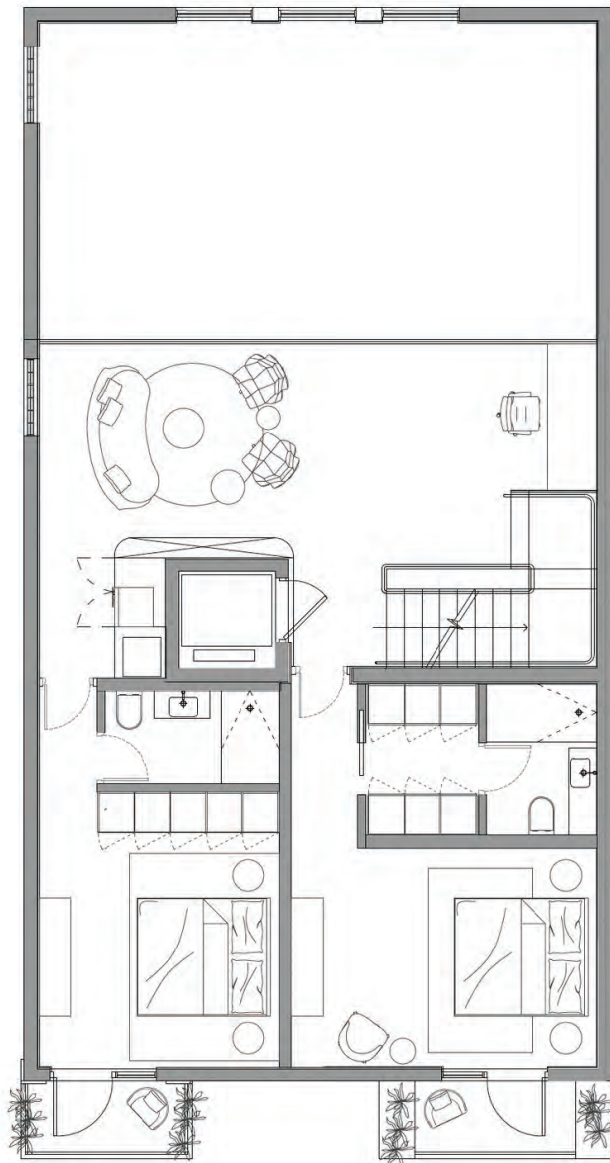
THIRD FLOOR

GUEST AND ENTERTAINMENT

Third Floor Bedrooms To Loft: 1,151 Sf

Third Floor West Facing Balconies

Together: 69 Sf



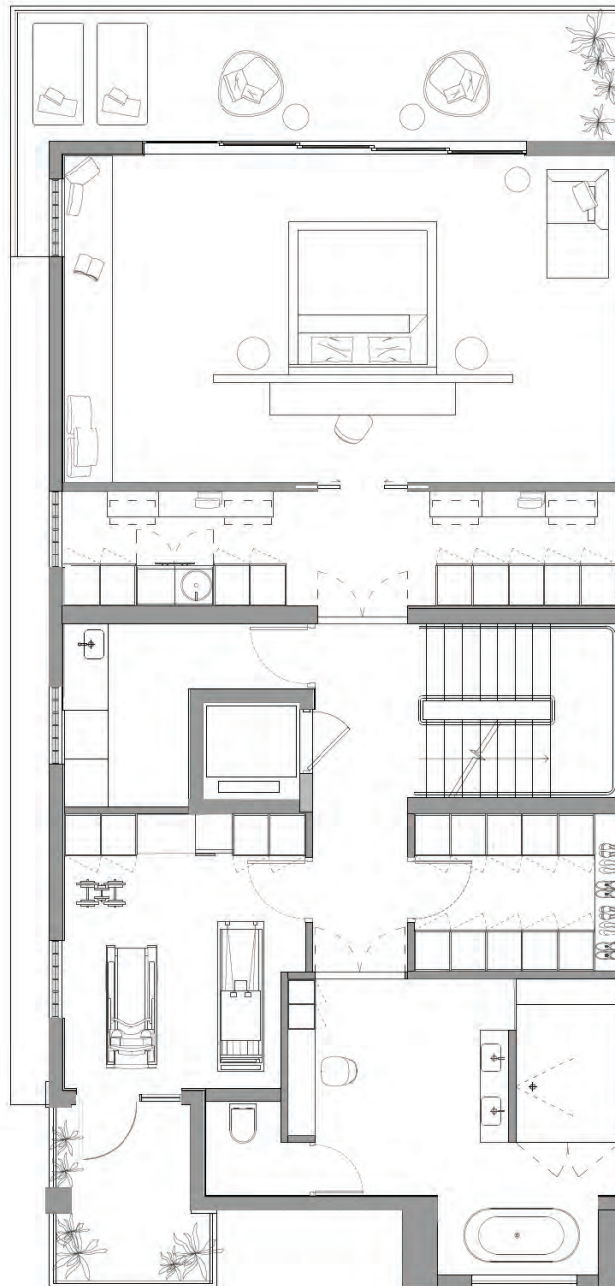
FOURTH FLOOR

MASTER SUITE FLOOR - OPTION ONE

Fourth Floor Master Suite: 1,610 Sf

Fourth Floor West Facing Balcony: 90 Sf

Fourth Floor East Facing Balcony: 212 Sf

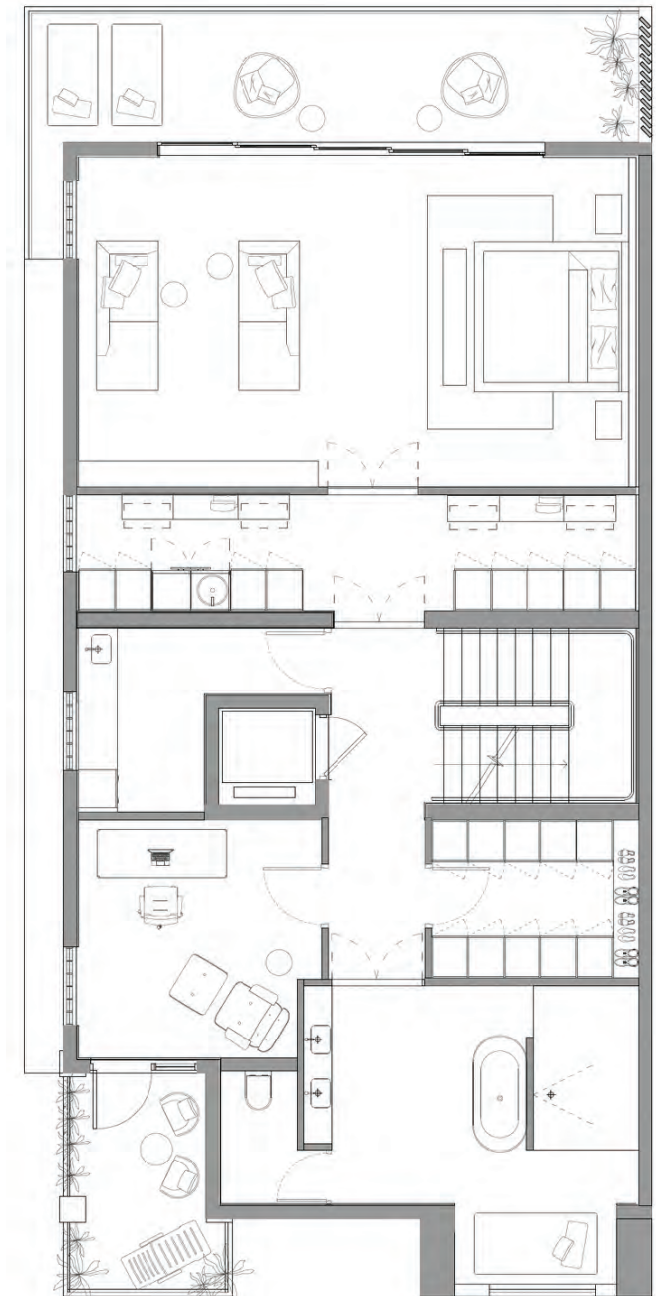


MASTER SUITE FLOOR OPTION TWO

Fourth Floor Master Suite: 1,610 Sf

Fourth Floor West Facing Balcony: 90 Sf

Fourth Floor East Facing Balcony: 212 Sf



ROOF TOP

PANORAMIC VIEW

Roof Area : 1,666 Sf

Total Under Air: 4,036 Sf

