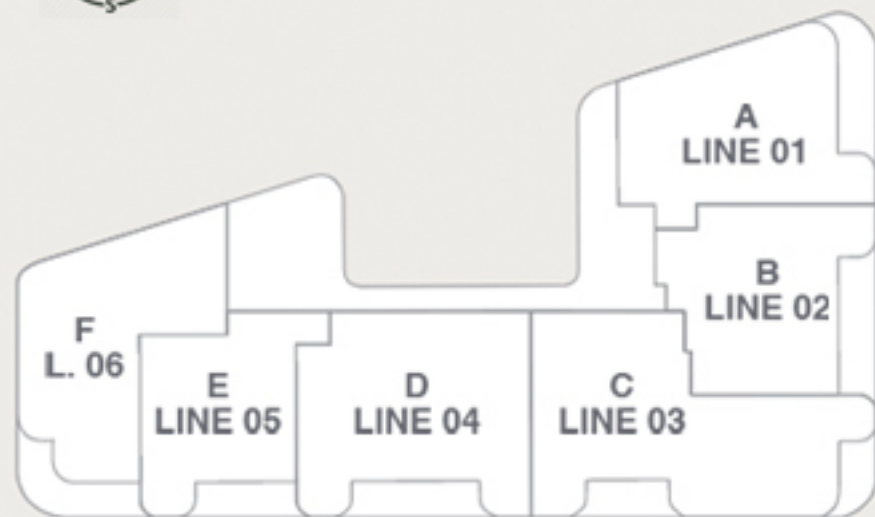
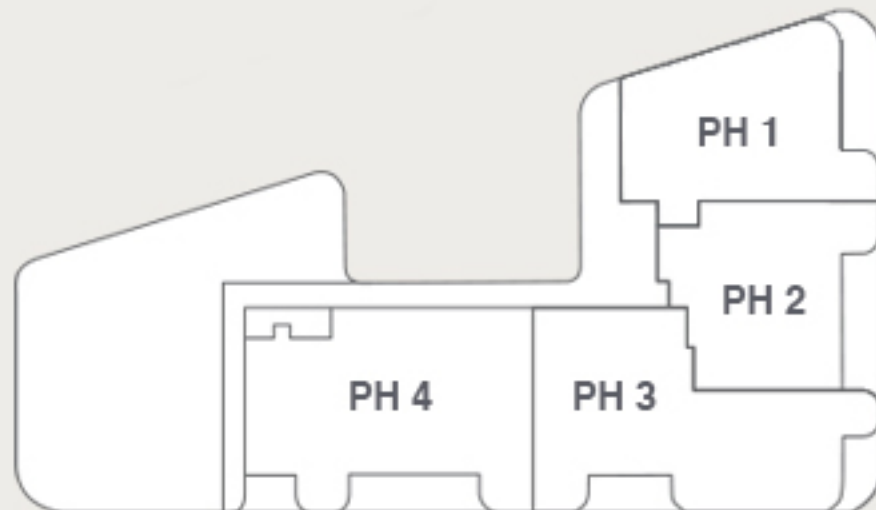


## Levels 2-9



Biscayne Bay

## 10th Level



# Residence A

Levels 2-9



3 Bedrooms + Den

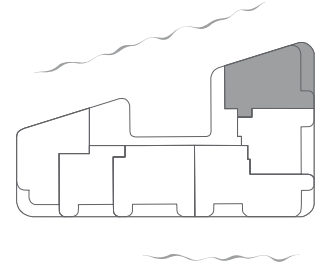
3 Bathrooms

Powder Room

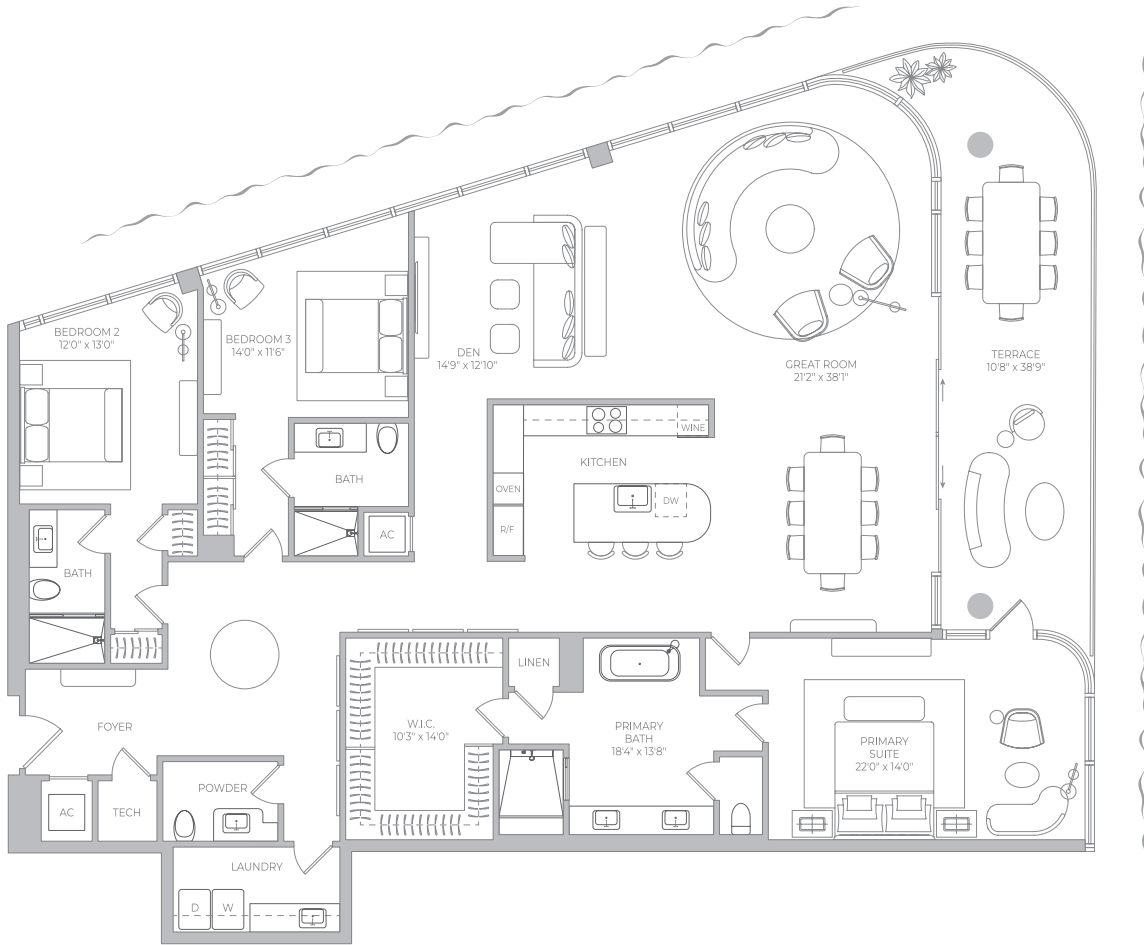
Interior 3,185 f<sup>2</sup> 295.90 m<sup>2</sup>

Terrace 437 f<sup>2</sup> 40.60 m<sup>2</sup>

Total 3,622 f<sup>2</sup> 336.50 m<sup>2</sup>



Biscayne Bay



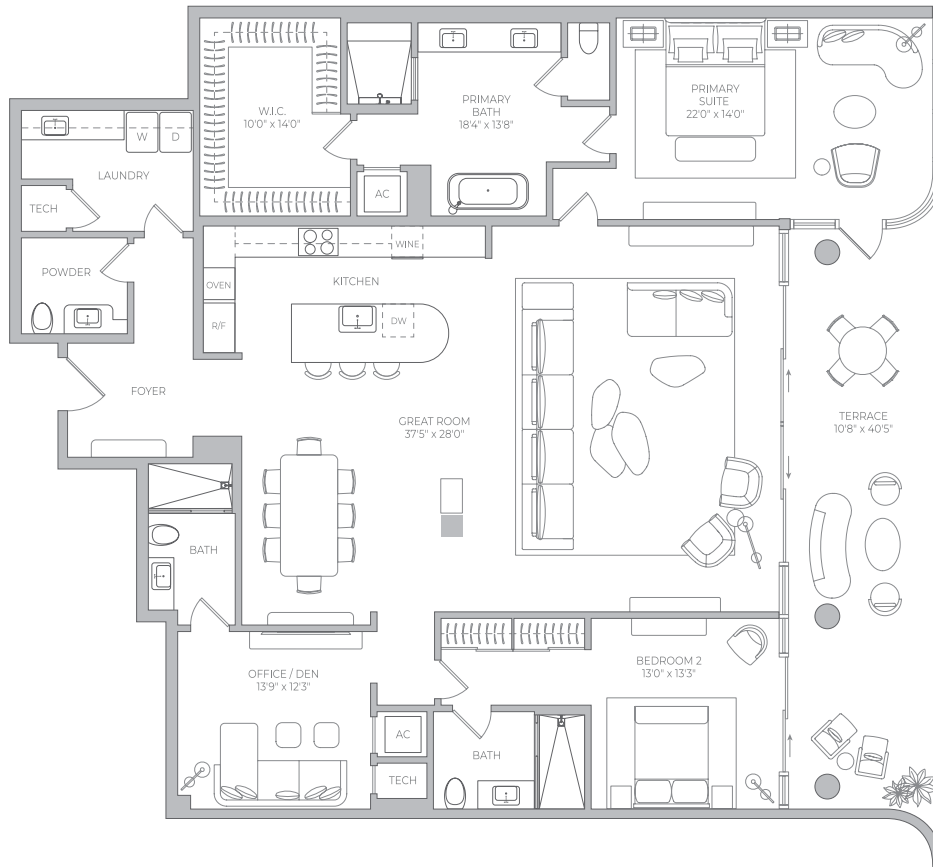
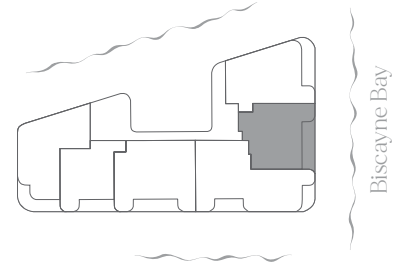
# Residence B

Levels 2-9



2 Bedrooms + Office/Den  
 3 Bathrooms  
 Powder Room

Interior	2,794 f <sup>2</sup>	259.57 m <sup>2</sup>
Terrace	438 f <sup>2</sup>	40.69 m <sup>2</sup>
Total	3,232 f <sup>2</sup>	300.26 m <sup>2</sup>



# Residence C

Levels 2-9

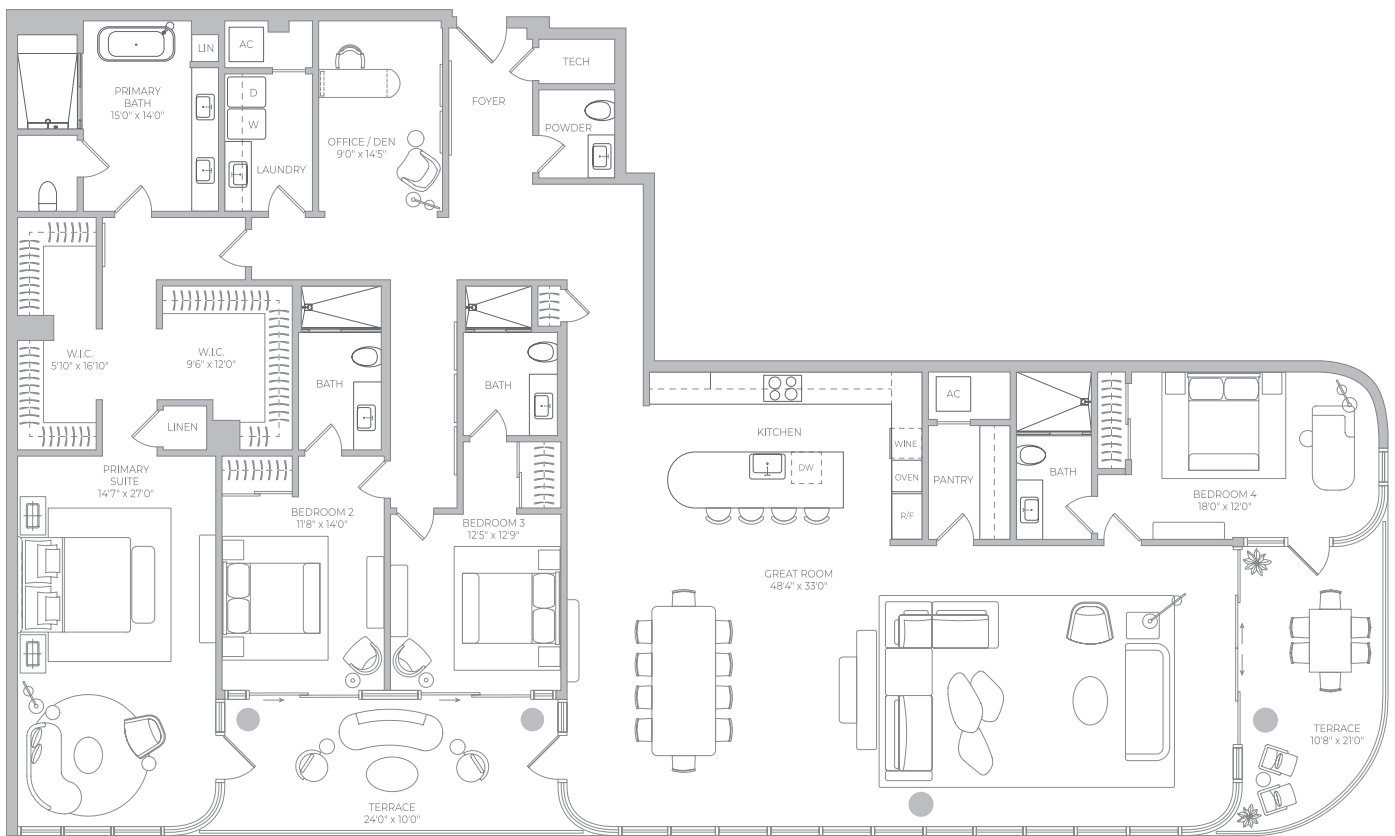
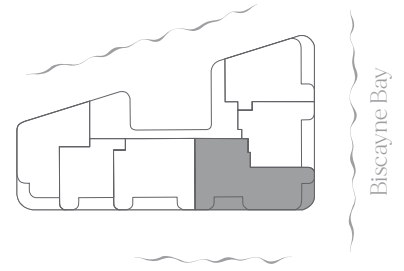


4 Bedrooms + Office/Den

4 Bathrooms

Powder Room

Interior	4,085 f <sup>2</sup>	379.51 m <sup>2</sup>
Terrace	455 f <sup>2</sup>	42.27 m <sup>2</sup>
Total	4,540 f <sup>2</sup>	421.78 m <sup>2</sup>



Biscayne Bay Views

# Residence D

Levels 2-9



3 Bedrooms + Office/Den

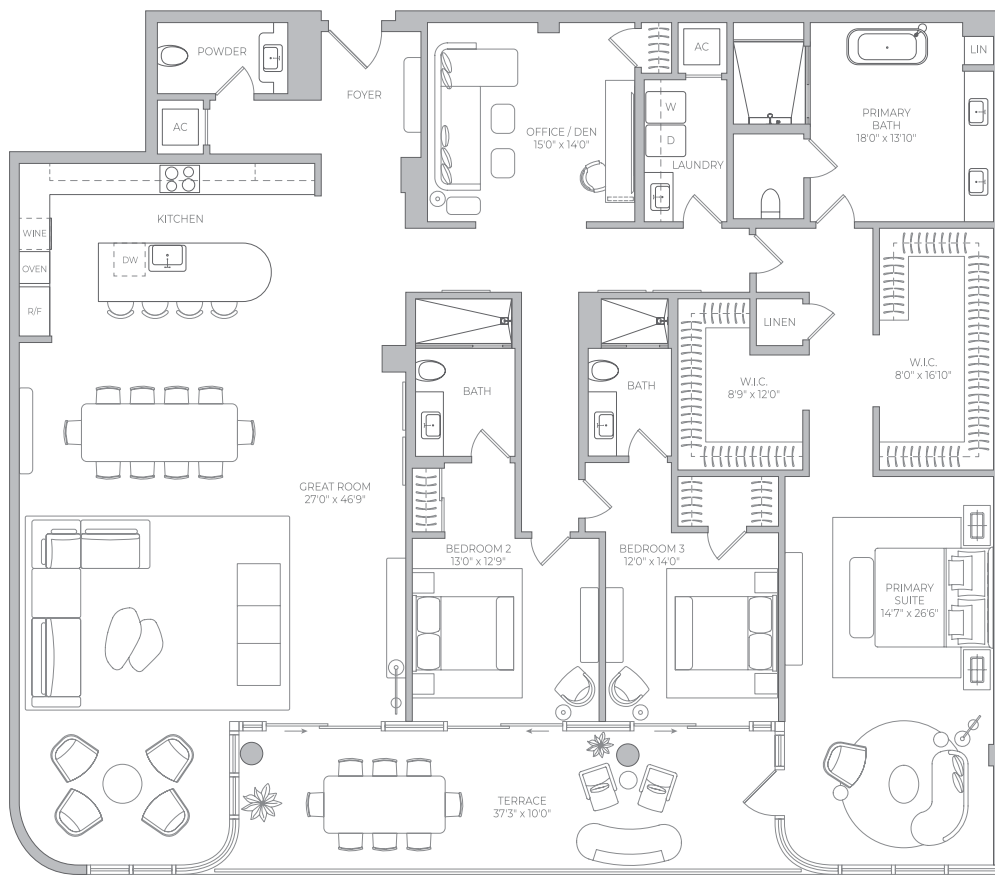
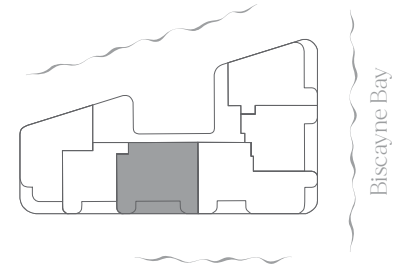
3 Bathrooms

Powder Room

Interior 3,626 f<sup>2</sup> 336.87 m<sup>2</sup>

Terrace 379 f<sup>2</sup> 35.21 m<sup>2</sup>

Total 4,005 f<sup>2</sup> 372.08 m<sup>2</sup>



Biscayne Bay Views

# Residence E

Levels 2-9



2 Bedrooms + Office/Den

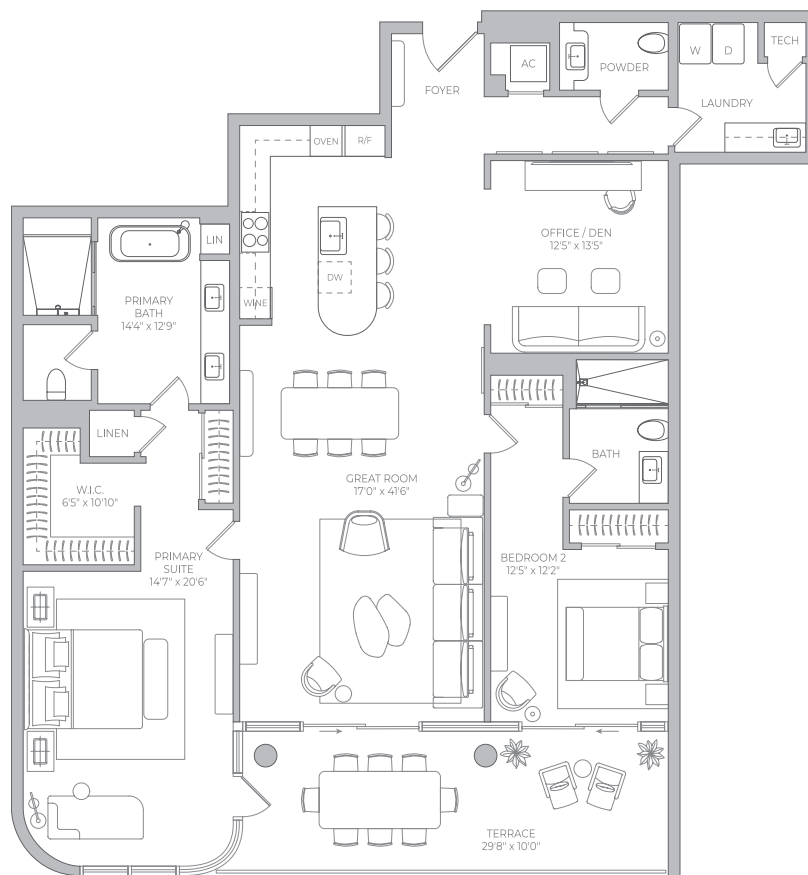
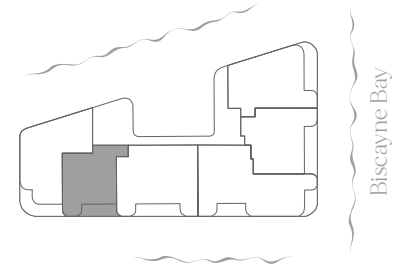
2 Bathrooms

Powder Room

Interior 2,238 f<sup>2</sup> 207.92 m<sup>2</sup>

Terrace 304 f<sup>2</sup> 28.24 m<sup>2</sup>

Total 2,542 f<sup>2</sup> 236.16 m<sup>2</sup>



Biscayne Bay Views

# Residence F

Levels 2-9

3 Bedrooms + Office/Den

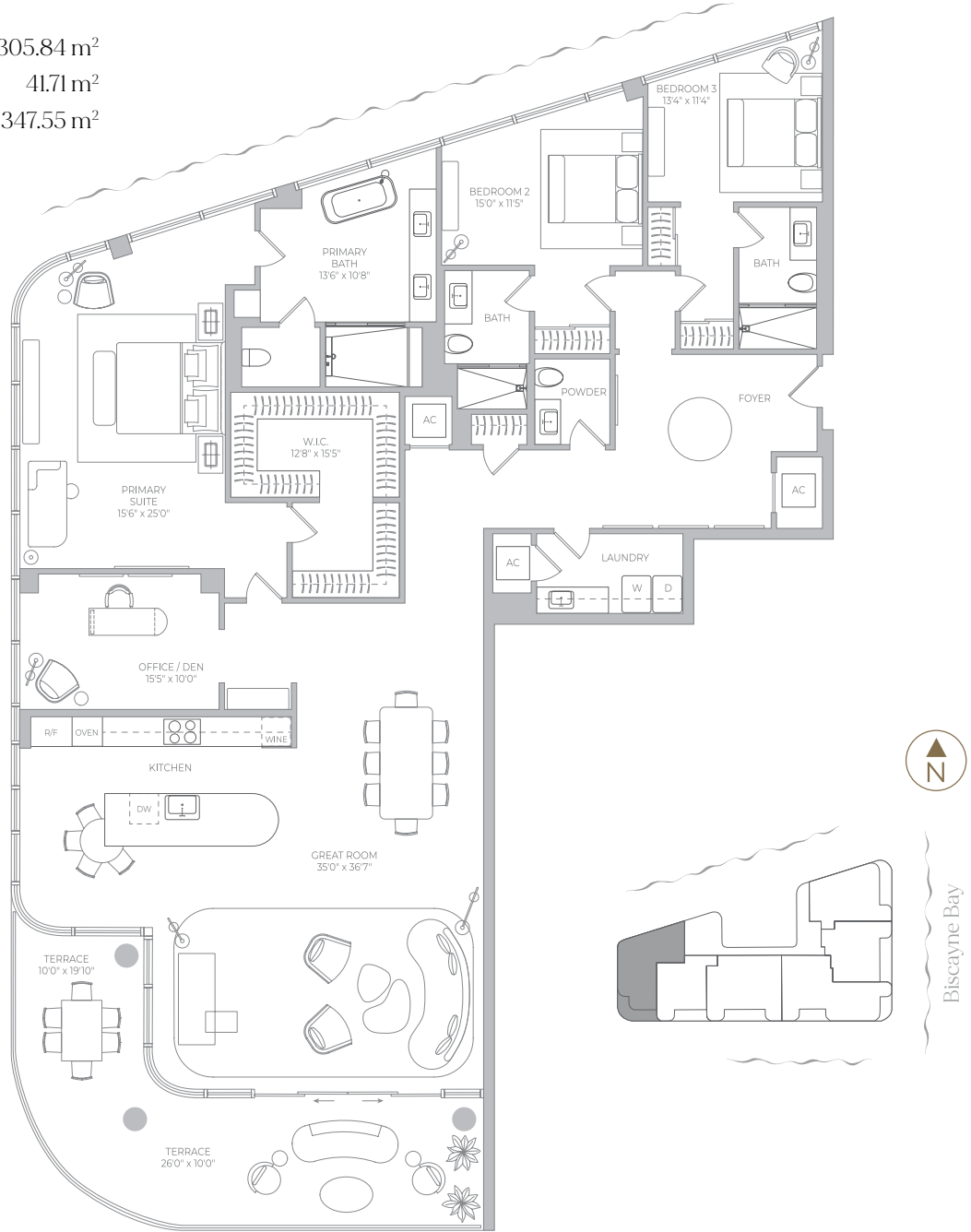
3 Bathrooms

Powder Room

Interior 3,292 f<sup>2</sup> 305.84 m<sup>2</sup>

Terrace 449 f<sup>2</sup> 41.71 m<sup>2</sup>

Total 3,741 f<sup>2</sup> 347.55 m<sup>2</sup>



Biscayne Bay Views

# Penthouse 1

Level 10



3 Bedrooms + Den

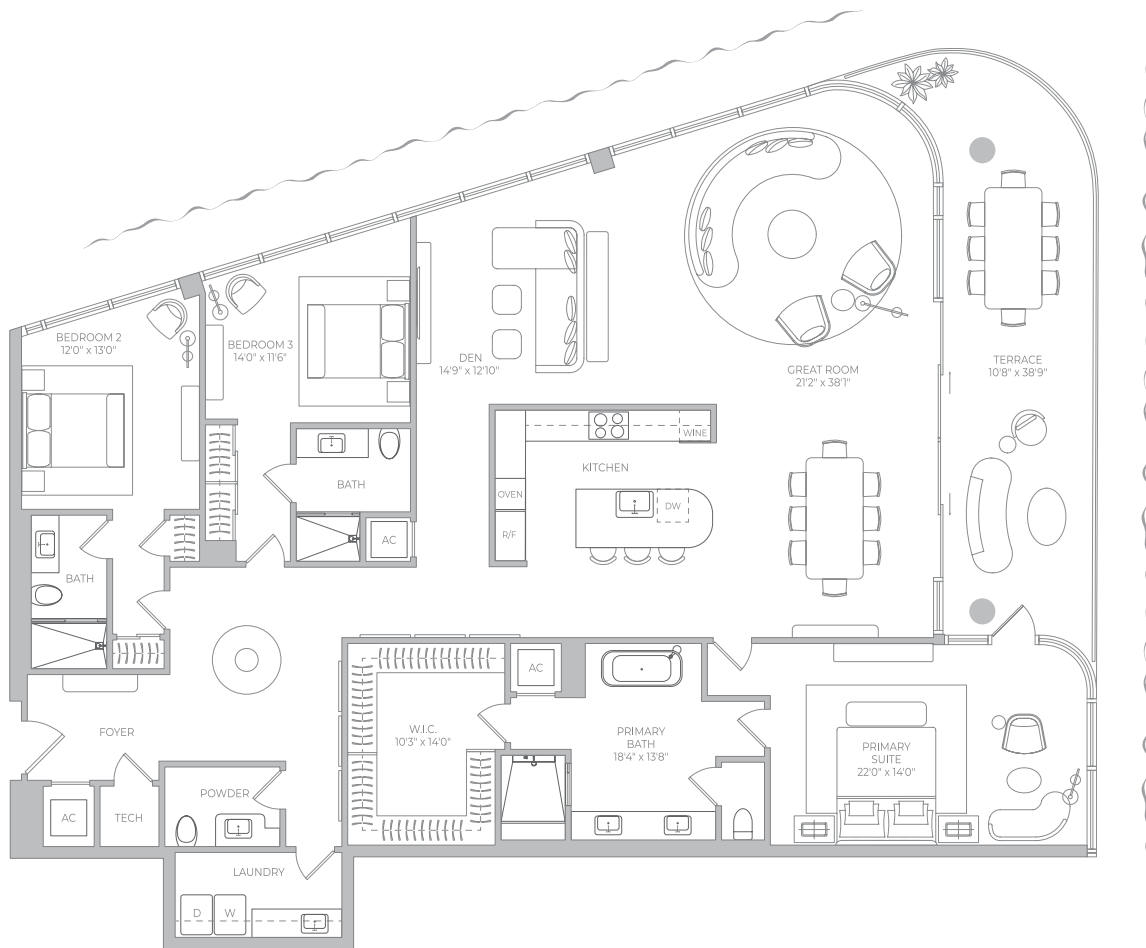
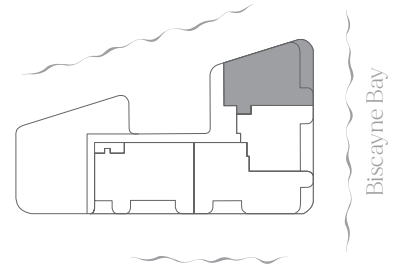
3 Bathrooms

Powder Room

Interior 3,186 f<sup>2</sup> 295.99 m<sup>2</sup>

Terrace 439 f<sup>2</sup> 40.78 m<sup>2</sup>

Total 3,625 f<sup>2</sup> 336.77 m<sup>2</sup>





# Penthouse 2

Level 10



2 Bedrooms + Office/Den

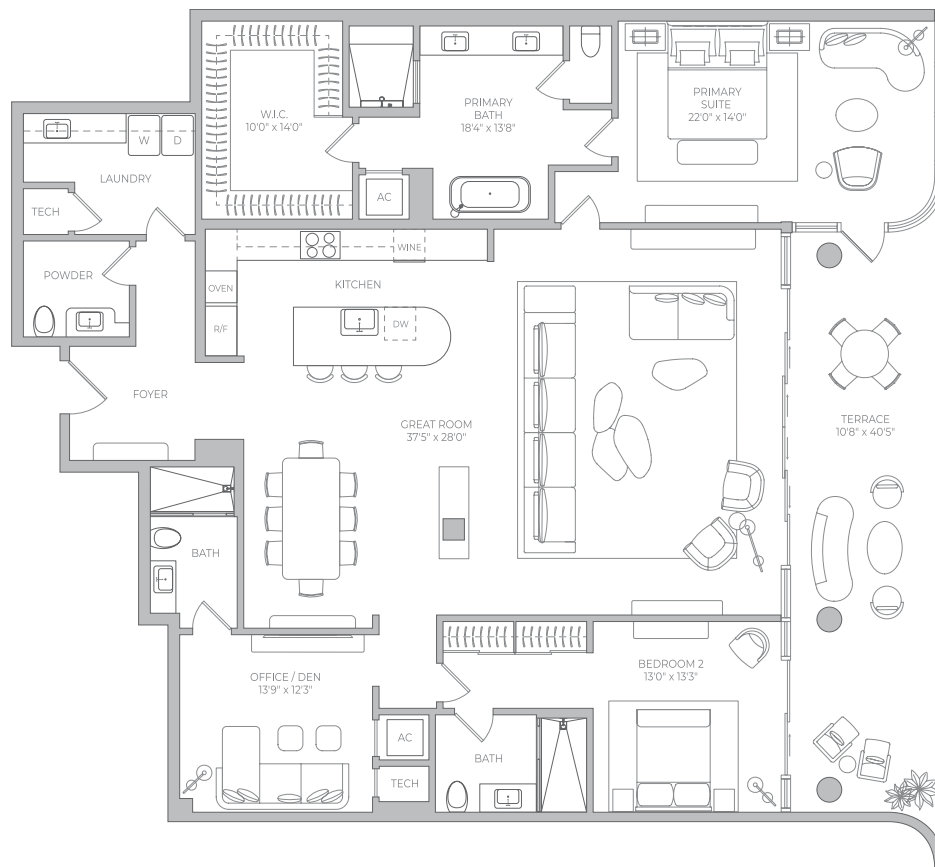
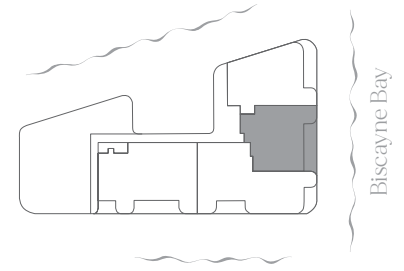
3 Bathrooms

Powder Room

Interior 2,798 f<sup>2</sup> 259.94 m<sup>2</sup>

Terrace 442 f<sup>2</sup> 41.06 m<sup>2</sup>

Total 3,240 f<sup>2</sup> 301.01 m<sup>2</sup>



# Penthouse 3

Level 10



4 Bedrooms + Office/Den

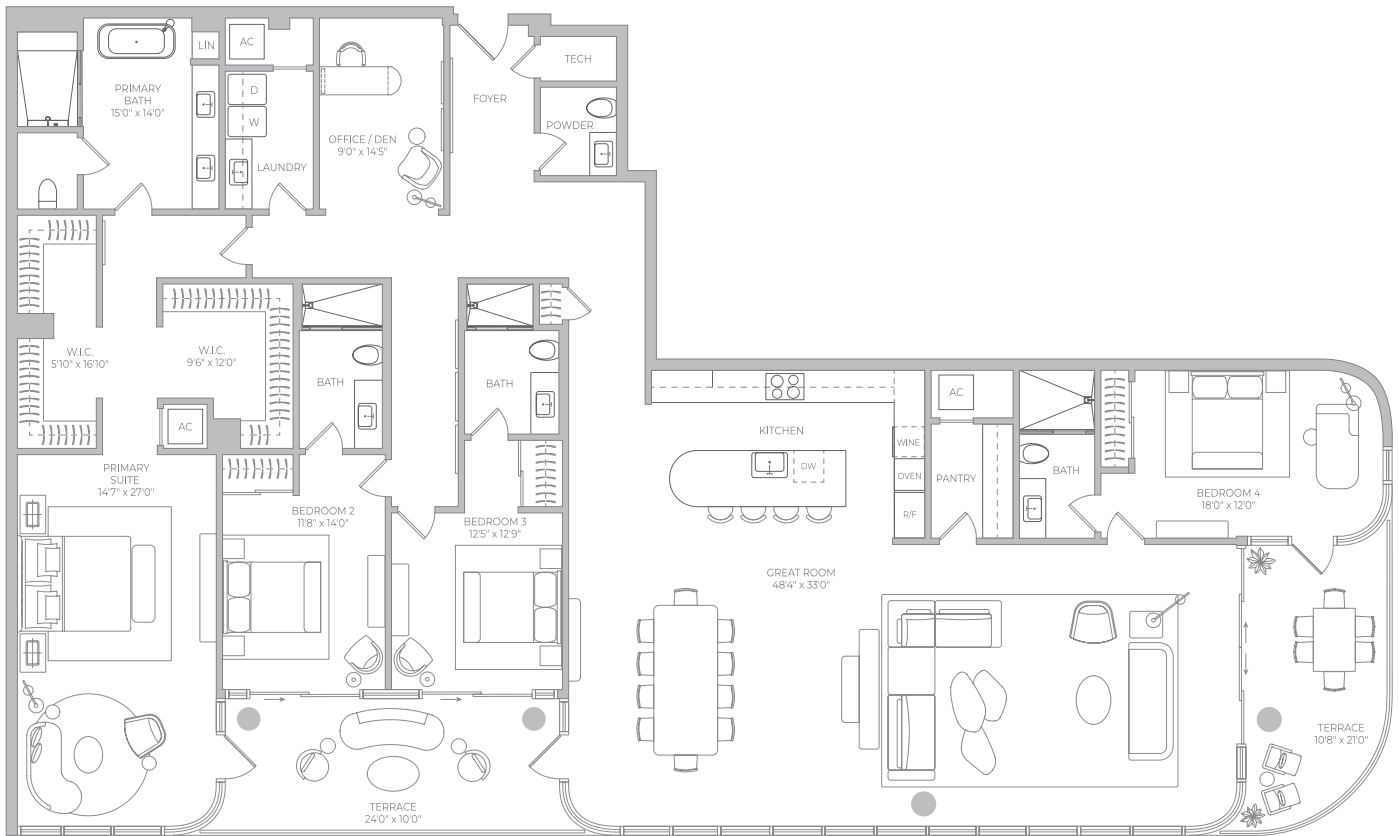
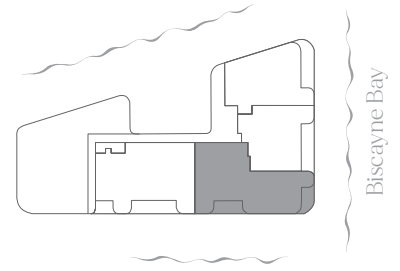
4 Bathrooms

Powder Room

Interior 4,085 f<sup>2</sup> 379.51 m<sup>2</sup>

Terrace 463 f<sup>2</sup> 43.01 m<sup>2</sup>

Total 4,548 f<sup>2</sup> 422.52 m<sup>2</sup>



Biscayne Bay Views