



**THE RITZ - CARLTON
RESIDENCES**



THE RITZ-CARLTON RESIDENCES

SOUTH BEACH

COME HOME TO AN ELEVATED OCEANFRONT ESCAPE

INTRODUCING THE RITZ-CARLTON RESIDENCES, SOUTH BEACH. BOUTIQUE-SIZED AND EXQUISITELY LOCATED, THIS LIMITED COLLECTION OF JUST 30 OCEANFRONT BEACH HOUSES IN THE SKY FEATURES PANORAMIC ATLANTIC OCEAN AND HISTORIC MIAMI BEACH VIEWS.

PROPERTY OVERVIEW

- A LIMITED COLLECTION OF 30 BEACH HOUSES
 - CUSTOM-DESIGNED ONE- TO FIVE-BEDROOM RESIDENCES
 - TWO DUPLEX PENTHOUSES WITH PRIVATE ROOFTOP TERRACES FEATURING INDIVIDUAL OUTDOOR POOLS AND KITCHENS
- LEGENDARY RITZ-CARLTON SERVICE FROM BEACHFRONT TO RESIDENCES AND THROUGHOUT ALL AMENITY SPACES
- OVER 50,000 SQUARE FEET OF BESPOKE AMENITIES
- REFINED INTERIORS BY RENOWNED DESIGNER ALESSANDRO MUNGE OF STUDIO MUNGE
- ARCHITECTURE BY KOBI KARP ARCHITECTURE AND INTERIOR DESIGN INC.
- LUSH LANDSCAPING BY NATURALFICIAL
- DINING EXPERIENCES BY NOBEL PEACE PRIZE NOMINEE AND MICHELIN-STARRED CHEF JOSÉ ANDRÉS
- CULTURAL PROGRAMMING, INCLUDING CURATED CONTEMPORARY ART INSTALLATIONS

LOCATION

- SERENE BEACHFRONT ENCLAVE JUST MOMENTS FROM MIAMI'S INTERNATIONALLY ACCLAIMED DESTINATIONS FOR SHOPPING, DINING, ARTS, CULTURE, AND ENTERTAINMENT
- PREMIER LOCATION AT 1671 COLLINS AVENUE ADJACENT TO UPSCALE SHOPS AND CAFÉS ALONG PEDESTRIAN FRIENDLY LINCOLN ROAD

RESIDENCE FEATURES

- PANORAMIC OCEAN VIEWS FROM MOST RESIDENCES
- PRIVATE ELEVATOR WITH DIRECT ENTRY IN MOST RESIDENCES
- SWEEPING WRAP-AROUND TERRACES WITH ARCHITECTURAL GLASS RAILINGS IN MOST RESIDENCES
- AIRY 10-FOOT CEILINGS WITH FLOOR-TO-CEILING WINDOWS SHOWCASING VIEWS OF THE ATLANTIC OCEAN, MIAMI BEACH, AND BEYOND
- SPACIOUS LIVING, DINING, AND ENTERTAINING AREAS
- HAND-SELECTED NATURAL STONE FINISHES IN ALL BATHROOMS AND KITCHENS
 - KITCHEN: CALACATTA EXTRA MARBLE
 - PRIMARY BATHROOM: PAONAZZO EXTRA MARBLE
 - SECONDARY BATHROOMS: BLUE MOON QUARTZITE
 - POWDER ROOMS: QUARZO ROSA QUARTZITE
- CUSTOM FRENCH WHITE OAK FLOORING THROUGHOUT
- LUTRON LIGHTING CONTROL SYSTEM
- FULL-SIZED WASHERS AND VENTED DRYERS IN SELECT RESIDENCES
- PRE-WIRING AND POCKETS FOR CUSTOM WINDOW TREATMENTS
- MIAMI-DADE NOA-RATED WINDOW SYSTEMS FOR HURRICANE RESISTIVITY
- 24-HOUR VALET PARKING

THE RITZ-CARLTON RESIDENCES, SOUTH BEACH

1671 COLLINS AVE MIAMI BEACH, FL 33139

THE RITZ-CARLTON RESIDENCES SAGAMORE SOUTH BEACH HAVE NOT OWNED, DEVELOPED OR SOLD BY THE RITZ-CARLTON HOTEL COMPANY L.L.C. OR ITS AFFILIATES. THE RITZ-CARLTON RESIDENCES SAGAMORE SOUTH BEACH DEVELOPMENT LLC USES THE RITZ-CARLTON MARKS UNDER LICENSE FROM RITZ-CARLTON WHICH HAS NOT CONFIRMED THE ACCURACY OF ANY OF THE STATEMENTS OR REPRESENTATIONS MADE. GENERAL DESCRIPTIONS OF FINISHES, SPECIFICATIONS, BRANDS, MODELS AND OTHER MATTERS OF DETAIL ARE CONCEPTUAL ONLY AND PROVIDED FOR CONVENIENCE OF REFERENCE AND SOLELY FOR THE PURPOSES OF SHOWING APPROXIMATE LEVEL OF QUALITY AND SHOULD NOT BE RELIED UPON BY ANY PURCHASER AS A BASIS FOR PURCHASING A UNIT. NOTHING HEREIN SHOULD BE RELIED UPON AS REPRESENTATIONS, EXPRESS OR IMPLIED, OF THE FINAL DETAIL OF THE UNIT OR PROJECT. THE INFORMATION PROVIDED INCLUDES SPECIFICATIONS, MODELS AND BRANDS BASED UPON INFORMATION AVAILABLE AT THE TIME OF PREPARATION AND IS SUBJECT TO CHANGE WITHOUT NOTICE. ALL LETTERS ARE BASED UPON TODAY'S DESIGN MODELS AND FINISHES AND MAY VARY FROM DESIGN MODELS AND OFFERINGS AT THE TIME OF PURCHASE. FOR INSTALLATION IN THE UNIT, DEVELOPER HAS THE RIGHT TO MODIFY, SUBSTITUTE OR CHANGE MATERIALS, SPECIFICATIONS AND/OR COLORS UTILIZED IN FLOOR, WALL, DOOR, CABINETRY, COUNTERTOPS AND OTHER ITEMS OF FINISH. COORDINATION OF THE FINISHING ITEMS ARE SUBJECT TO SIZE AND COLOR VARIATIONS, ORDER AND QUALITY VARIATIONS AND ANY INACCURACIES WITH PRICE, AVAILABILITY AND CHANGES IN MATERIALS. THESE SHOWN OR LISTED BRANDS AND MODELS ARE SUBJECT TO CHANGE WITHOUT NOTICE. ALL RITZ-CARLTON SERVICES ARE CONDITIONED UPON AN APPROPRIATE LICENSE AND/OR AGREEMENTS BEING MAINTAINED FOR THE PROVISION OF SUCH SERVICES. CERTAIN SERVICES MAY BE OFFERED FOR AN ADDITIONAL COST. BRANDS ONLY ORAL REPRESENTATIONS CANNOT BE RELIED UPON AS CORRECT STATEMENTS OF THE REPRESENTATIONS. REPRESENTATIONS SHOULD BE MADE TO THE DOCUMENTS REFERRED BY SECTION THREE. FLOORING SHOULD BE FURNISHED BY A DEVELOPER TO BUYER OR LESSEE. 3. THESE OFFERS ARE MADE ONLY BY THE OFFERING DOCUMENTS FOR THE CONDOMINIUM AND NO STATEMENT SHOULD BE RELIED UPON IF NOT MADE IN THE OFFERING DOCUMENTS. THIS IS NOT AN OFFER TO SELL OR SOLICITATION OF OFFERS TO BUY THE CONDOMINIUM UNITS IN STATES WHERE SUCH OFFER OR SOLICITATION CANNOT BE MADE. PRICES, PLANS AND SPECIFICATIONS ARE SUBJECT TO CHANGE WITHOUT NOTICE.

WE ARE PLEDGED TO THE LETTER AND SPIRIT OF THE U.S. POLICY FOR ADVERTISEMENT OF EQUAL HOUSING OPPORTUNITY THROUGHOUT THE NATION. WE ENCOURAGE AND SUPPORT AN AFFIRMATIVE ADVERTISING AND MARKETING PROGRAM IN WHICH THERE ARE NO BARRIERS TO OBTAINING HOUSING BECAUSE OF RACE, COLOR, RELIGION, SEX, HANDICAP, RACIAL STATUS OR NATIONAL ORIGIN.



THE RITZ-CARLTON RESIDENCES

SOUTH BEACH

KITCHENS BY STUDIO MUNGE

- HAND-SELECTED AND ARRANGED CALACATTA EXTRA PREMIUM MARBLE THROUGHOUT
- BESPOKE CALACATTA EXTRA MARBLE ISLAND WITH INTEGRATED SINK AND BREAKFAST NOOK IN SELECT RESIDENCES
- FINELY CRAFTED HONEY OAK TOWER CABINETS DECORATED WITH BRUSHED BRONZE FINISH METAL INLAYS AND CUSTOM CURVED HANDLES
- FLUTED GLASS CABINETS WITH INTEGRATED LIGHTING
- FULL SUITE OF INTEGRATED GAGGENAU APPLIANCES, INCLUDING TEMPERATURE-CONTROLLED WINE REFRIGERATORS IN MOST RESIDENCES
- CHEF'S KITCHEN IN SELECT RESIDENCES
- KALLISTA PLUMBING FIXTURES IN BRUSHED BRONZE FINISH
- BUILT-IN DRY BAR IN MOST RESIDENCES
- BUTLER'S PANTRY IN SELECT RESIDENCES

PRIMARY BATHROOM SUITE BY STUDIO MUNGE

- DUAL ENSUITE BATHROOMS IN SELECT RESIDENCES
- ITALIAN PAONAZZO EXTRA PREMIUM MARBLE FLOORS AND WALLS WITH DISTINCTIVE SILVER, GOLD, AND AMBER VEINING
- DOUBLE FLOATING VANITIES WITH BRASS FINISH DETAILING, HAND-SELECTED ITALIAN PAONAZZO EXTRA PREMIUM MARBLE COUNTERTOPS, AND CUSTOM MIRRORS WITH INTEGRATED LIGHTING
- CUSTOM SHOWERS WITH FLOOR-TO-CEILING GLASS DOORS AND A WALL-MOUNTED RAIN SHOWER HEAD
- FREESTANDING SOAKING TUBS WITH OCEAN VIEWS IN MOST RESIDENCES
- PRIVATE WATER CLOSET IN MOST RESIDENCES

SECONDARY BATHROOMS BY STUDIO MUNGE

- CUSTOM VANITY WITH HAND-SELECTED AND ARRANGED GRIGIO APUANO MARBLE COUNTERTOPS AND CUSTOM MIRROR WITH INTEGRATED LIGHTING
- GRIGIO APUANO MARBLE WALLS AND FLOORS
- POLISHED METAL FIXTURES AND FITTINGS
- GLASS-ENCLOSED SHOWER

POWDER ROOM BY STUDIO MUNGE

- CRISTALLO PINK QUARTZITE STONE WALLS, FLOORS, AND CUSTOM VANITY
- BESPOKE LIGHTING SCONCES AND INTEGRATED LIGHTING
- POLISHED METAL FIXTURES AND FITTINGS

THE RITZ-CARLTON RESIDENCES, SOUTH BEACH

1671 COLLINS AVE MIAMI BEACH, FL 33139

THE RITZ-CARLTON RESIDENCES, SAGAMORE SOUTH BEACH ARE NOT OWNED, DEVELOPED OR SOLD BY THE RITZ-CARLTON HOTEL COMPANY, L.L.C. OR ITS AFFILIATES. THE RITZ-CARLTON, SOME BODY DEVELOPMENT, L.L.C. USES THE RITZ-CARLTON MARKS UNDER LICENSE FROM THE RITZ-CARLTON, WHICH HAS NOT CONFIRMED THE ACCURACY OF ANY OF THE STATEMENTS OR REPRESENTATIONS MADE. GENERAL DESCRIPTIONS OF FINISHES, SPECIFICATIONS, BRANDS, MODELS AND OTHER MATTERS OF DETAIL ARE CONCEPTUAL ONLY AND PROVIDED FOR CONVENIENCE OF REFERENCE AND SHOULD NOT BE RELIED UPON AS A BASIS FOR PURCHASING A UNIT. NOTHING HEREIN SHOULD BE RELIED UPON AS REPRESENTATIONS, EXPRESS OR IMPLIED, OF THE FINAL DETAIL OF THE UNIT OR PROJECT. THE INFORMATION PROVIDED INCLUDES SPECIFICATIONS, MODELS AND BRANDS, BASED UPON THE PRIMARY DEVELOPMENT PLANS AND IS ONLY FOR INFORMATIONAL PURPOSES AND IS SUBJECT TO CHANGE WITHOUT NOTICE. ALL LETTERS ARE BASED UPON THE CURRENT MODEL AND FINISHES AND MAY VARY FROM DESIGN MODELS AND OFFERINGS AT THE TIME OF PURCHASE FOR INSTALLATION IN THE UNIT. DEVELOPER HAS THE RIGHT TO MODIFY, SUBSTITUTE OR CHANGE MATERIALS, SPECIFICATIONS AND/OR COLORS UTILIZED IN FLOOR, WALL, DOOR, CABINETS, COUNTERTOPS AND OTHER ITEMS OF FINISH. CERTAIN OF THE FOREGOING ITEMS ARE SUBJECT TO SIZE AND COLOR VARIATIONS, DESIGN AND QUALITY VARIATIONS, AND ANY VARIATIONS WITH PRICE, AVAILABILITY AND/OR FINISHES. QUALITY OF WORKMANSHIP SHALL BE AS SHOWN IN THE PHOTOGRAPHS AND THE UNDERSIDE OF THE FINISHED CEILING. SPECIFICATIONS AND OFFERS SHALL BE BASED ON ALL CURRENT LOCAL, STATE AND FEDERAL LAWS AND REGULATIONS. ALL LETTERS, SERVICES AND MEMBERSHIP OF THE DESIGN TEAM ARE SUBJECT TO CHANGE WITHOUT NOTICE. ALL RITZ-CARLTON SERVICES ARE CONDITIONED UPON AN APPROPRIATE LICENSE AND/OR AGREEMENTS BEING MAINTAINED FOR THE PROVISION OF SUCH SERVICES. CERTAIN SERVICES MAY BE OFFERED FOR A SEPARATE FEE OR ON AN A LA CARTE BASIS. ONLY ONE REPRESENTATIVE CANNOT BE RELIED UPON AS CORRECTLY STATING THE REPRESENTATIONS. REPRESENTATIONS SHOULD BE MADE TO THE DOCUMENTS REFERRED TO BY SECTION FLOOR PLAN. STATUTES TO BE FURNISHED BY A DEVELOPER TO BUYER OR LESSEE. 3. THIS OFFERING IS MADE ONLY BY THE OFFERING DOCUMENTS FOR THE CONDOMINIUM AND NO STATEMENT SHOULD BE RELIED UPON IF NOT MADE IN THE OFFERING DOCUMENTS. THIS IS NOT AN OFFER TO SELL, OR SOLICITATION OF OFFERS TO BUY, THE CONDOMINIUM UNITS IN STATES WHERE SUCH OFFER OR SOLICITATION CANNOT BE MADE. PRICES, PLANS, AND SPECIFICATIONS ARE SUBJECT TO CHANGE WITHOUT NOTICE.

WE ARE PLEDGED TO THE LETTER AND SPIRIT OF THE U.S. POLICY FOR ADVERTISEMENT OF EQUAL HOUSING OPPORTUNITY THROUGHOUT THE NATION. WE ENCOURAGE AND SUPPORT AN AFFIRMATIVE ADVERTISING AND MARKETING PROGRAM IN WHICH THERE ARE NO BARRIERS TO OBTAINING HOUSING BECAUSE OF RACE, COLOR, RELIGION, SEX, HANDICAP, RACIAL STATUS OR NATIONAL ORIGIN.



THE RITZ-CARLTON RESIDENCES

SOUTH BEACH

EXCLUSIVE RESIDENTIAL AMENITIES

- PRIVATE DOUBLE-HEIGHT LOBBY WITH VIEWS OF THE SCULPTURE GARDEN AND OCEAN
- 24-HOUR DOORMAN AND CONCIERGE
- ENTERTAINMENT LOUNGE WITH DINING TABLE AND CHEF'S KITCHEN OVERLOOKING LUSH GARDENS
- PRIVATE ROOFTOP POOL AND TERRACE WITH SUN LOUNGERS BENEATH UMBRELLAS AND EXPANSIVE ATLANTIC OCEAN VIEWS
- FOUR SEMI-PRIVATE CABANAS, EACH WITH TV AND LOUNGE SEATING
- POOLSIDE SOCIAL LOUNGE ENHANCED WITH STATE-OF-THE-ART MULTIMEDIA TECHNOLOGY
- PRIVATE STATE-OF-THE-ART FITNESS CENTER BY TECHNOGYM WITH PERSONAL TREATMENT AND TRAINING ROOMS

EXCLUSIVE HOTEL AMENITIES AND SERVICES FOR THE RESIDENCES

- DIRECT ACCESS TO THE SAGAMORE, A NEWLY RENOVATED, EXCLUSIVE ALL-SUITE ADDITION TO THE RITZ-CARLTON, SOUTH BEACH HOTEL
- RESTAURANT AND BEACH CLUB CULINARY PROGRAMMING BY MICHELIN-STARRED CHEF, JOSÉ ANDRÉS*
- TWO BEACHFRONT POOLS WITH 12 SEMI-PRIVATE CABANAS
- RESIDENTS' BEACH CLUB WITH DEDICATED CABANA SERVICE, BEACH LOUNGES, AND UMBRELLAS
- HISTORIC LOBBY WITH LIBRARY, LOUNGE SEATING, AND SIGNATURE CAFÉ*
- INTIMATE SCREENING ROOM WITH PLUSH MODERNIST LOUNGERS AND A SCULPTURAL BACKLIT ONYX COCKTAIL BAR
 - EXCLUSIVE SCREENINGS AND EVENTS FOR RESIDENTS
- GALLERY WITH ROTATING WORKS OF ART THAT PAYS HOMAGE TO SAGAMORE'S PRESTIGIOUS HISTORY
- SCULPTURE GARDEN BY NATURALFICIAL

THE RITZ-CARLTON, SOUTH BEACH HOTEL AMENITIES

- MEDITERRANEAN RESTAURANT, ZAYTINYA, BY MICHELIN-STARRED CHEF JOSÉ ANDRÉS*
- LAPIDUS BAR BY JOSE ANDRES*
- OCEANFRONT BEACH CLUB BY JOSÉ ANDRÉS*
- THE RITZ-CARLTON SPA
 - 14 TREATMENT ROOMS, INCLUDING TWO COUPLES TREATMENT ROOMS*
 - SEPARATE MEN'S AND WOMEN'S CHANGING ROOMS WITH STEAM ROOMS, SAUNAS, AND RELAXATION LOUNGES
 - IN-RESIDENCE TREATMENTS AVAILABLE UPON REQUEST*
 - BEAUTY SALON WITH COMPLETE HAIR AND NAIL OFFERINGS*
- OUTDOOR RESORT LAP POOL AND WHIRLPOOL
 - DAYBEDS AND CABANAS AVAILABLE TO RESERVE*
- 24-HOUR FITNESS CENTER
- ELEVEN MEETING SPACES SPANNING OVER 20,000 SQUARE FEET, INCLUDING THE GRAND BALLROOM, WITH ONSITE CATERING BY CHEF JOSÉ ANDRÉS*
- RITZ KIDS PROGRAMMING FOR YOUNGER GUESTS*

THE RITZ-CARLTON RESIDENCES, SOUTH BEACH

1671 COLLINS AVE MIAMI BEACH, FL 33139

*À LA CARTE SERVICES, AVAILABLE AT ADDITIONAL COST

THE RITZ-CARLTON RESIDENCES SAGAMORE SOUTH BEACH ARE NOT OWNED, DEVELOPED OR SOLD BY THE RITZ-CARLTON HOTEL COMPANY LLC OR ITS AFFILIATES ("RITZ-CARLTON"). SOME RITZ-CARLTON DEVELOPMENT LLC USES THE RITZ-CARLTON MARKS UNDER LICENSE FROM RITZ-CARLTON WHICH HAS NOT CONFIRMED THE ACCURACY OF ANY OF THE STATEMENTS OR REPRESENTATIONS MADE. GENERAL DESCRIPTIONS OF FINISHES, SPECIFICATIONS, BRANDS, MODELS AND OTHER MATTERS OF DETAIL ARE CONCEPTUAL ONLY AND PROVIDED FOR CONVENIENCE OF REFERENCE AND SOLELY FOR THE PURPOSES OF SHOWING APPROXIMATE LEVEL OF QUALITY AND SHOULD NOT BE RELIED UPON BY BUYERS AS A BASIS FOR PURCHASING A UNIT. NOTHING HEREIN SHOULD BE RELIED UPON AS REPRESENTATIONS, EXPRESS OR IMPLIED, OF THE FINAL DETAIL OF THE UNIT OR PROJECT. THE INFORMATION PROVIDED INCLUDES SPECIFICATIONS, MODELS AND BRANDS BASED UPON PRELIMINARY DEVELOPMENT PLANS AND IS SUBJECT TO CHANGE WITHOUT NOTICE. ALL LISTINGS ARE BASED UPON TODAY'S DESIGN MODEL AND FINISHES AND MAY VARY FROM DESIGN MODELS AND OFFERINGS AT THE TIME OF PURCHASE. FOR INSTALLATION IN THE UNIT, DEVELOPER HAS THE RIGHT TO MODIFY, SUBSTITUTE OR CHANGE MATERIALS, SPECIFICATIONS AND/OR COLORS UTILIZED IN FLOOR, WALL, DOOR, CABINETRY, COUNTERTOPS AND OTHER ITEMS OF FINISH. CERTAIN OF THE FOREGOING ITEMS ARE SUBJECT TO SIZE AND COLOR VARIATIONS, DESIGN AND QUALITY VARIATIONS, AND MAY VARY IN PRICE, AVAILABILITY AND/OR BRANDS. FINISHES, MODELS AND BRANDS ARE SUBJECT TO CHANGE WITHOUT NOTICE. ALL RITZ-CARLTON SERVICES ARE CONDITIONED UPON AN APPROPRIATE LICENSE AND/OR AGREEMENTS BEING MAINTAINED FOR THE PROVISION OF SUCH SERVICES. CERTAIN SERVICES MAY BE OFFERED FOR A SEPARATE FEE OR ON AN À LA CARTE BASIS. ONLY ONE REPRESENTATIVE CANNOT BE RELIED UPON AS CORRECTLY STATING THE REPRESENTATIONS OF THE DEVELOPER FOR CORRECT REPRESENTATIONS. REPRESENTATION SHOULD BE MADE TO THE DOCUMENTS REFERRED BY SECTION FIVE, FLOOR PLANS. THIS OFFERING IS MADE ONLY BY THE OFFERING DOCUMENTS FOR THE CONDOMINIUM AND NO STATEMENT SHOULD BE RELIED UPON IF NOT MADE IN THE OFFERING DOCUMENTS. THIS IS NOT AN OFFER TO SELL, OR SOLICITATION OF OFFERS TO BUY, THE CONDOMINIUM UNITS IN STATES WHERE SUCH OFFER OR SOLICITATION CANNOT BE MADE. PRICES, PLANS, AND SPECIFICATIONS ARE SUBJECT TO CHANGE WITHOUT NOTICE.

WE ARE PLEDGED TO THE LETTER AND SPIRIT OF THE U.S. POLICY FOR ADHERENCE OF EQUAL HOUSING OPPORTUNITY THROUGHOUT THE NATION. WE ENCOURAGE AND SUPPORT AN AFFIRMATIVE ADVERTISING AND MARKETING PROGRAM IN WHICH THERE ARE NO BARRIERS TO OBTAINING HOUSING BECAUSE OF RACE, COLOR, RELIGION, SEX, HANDICAP, RACIAL STATUS OR NATIONAL ORIGIN.



THE RITZ-CARLTON RESIDENCES

SOUTH BEACH

PERSONALIZED SERVICES

ANTICIPATE BESPOKE SERVICE AT EVERY TURN WITH EXPERT STAFF AVAILABLE FOR EVERYTHING FROM ENHANCING BEACHFRONT LEISURE TIME AND ORCHESTRATING IN-RESIDENCE ASSISTANCE TO ARRANGING DINING AND ENTERTAINMENT EXCURSIONS AROUND MIAMI, AMONG MANY POSSIBILITIES.

ADDITIONAL SERVICES

- 24-HOUR VALET PARKING SERVICE
- BEACH CONCIERGE SERVICES
- BUSINESS SERVICES
- AIRLINE/PRIVATE AIR RESERVATIONS
- AIRPORT/GROUND TRANSPORTATION ARRANGEMENTS
- ORDERING FLORAL ARRANGEMENTS
- ACTIVITY ARRANGEMENTS
- COORDINATE DELIVERY SERVICES
- AUTOMOBILE RENTAL RESERVATIONS
- HOTEL AND GUEST SUITE RESERVATIONS
- LIMOUSINE/CAR SERVICE RESERVATIONS
- RESTAURANT INFORMATION/RESERVATIONS
- TOUR INFORMATION & RESERVATIONS
- SPA & SALON RESERVATIONS
- MOVE-IN COORDINATION
- THEATER & ENTERTAINMENT INFORMATION
- DOORMAN/PORTER SERVICES
- NOTARY PUBLIC SERVICES
- COMMON AREA HOUSEKEEPING
- COMMON AREA MAINTENANCE
- NEWSPAPER/MAGAZINE/PACKAGE DELIVERY

À LA CARTE SERVICES (ADDITIONAL FEE)

- IN-RESIDENCE DINING AND CATERING FROM SIGNATURE ON-SITE RESTAURANT BY MICHELIN-STARRED CHEF, JOSÉ ANDRÉS
- ENGINEERING SERVICES
- GROCERY SHOPPING
- LAUNDRY/DRY CLEANING/ALTERATIONS
- CAR WASHING/DETAILING
- TRAVEL & VACATION PLANNING
- EQUIPMENT RENTAL
- SECRETARIAL SERVICES
- FUNCTION/EVENT PLANNING
- MAIL PACKING & SHIPPING
- PERSONAL CHEF SERVICES
- PERSONAL TRAINER
- IN-RESIDENCE SPA TREATMENTS/SERVICE
- NANNY/CHILDCARE SERVICES
- PET CARE/KENNEL RESERVATIONS

THE RITZ-CARLTON RESIDENCES, SOUTH BEACH

1671 COLLINS AVE MIAMI BEACH, FL 33139

À LA CARTE SERVICES, AVAILABLE AT ADDITIONAL COST

THE RITZ-CARLTON RESIDENCES SAGAMORE SOUTH BEACH ARE NOT OWNED, DEVELOPED OR SOLD BY THE RITZ-CARLTON HOTEL COMPANY L.L.C. OR ITS AFFILIATES. RITZ-CARLTON SAGAMORE DEVELOPMENT LLC USES THE RITZ-CARLTON MARKS UNDER LICENSE FROM RITZ-CARLTON WHICH HAS NOT CONFIRMED THE ACCURACY OF ANY OF THE STATEMENTS OR REPRESENTATIONS MADE. GENERAL DESCRIPTIONS OF FINISHES, SPECIFICATIONS, BRANDS, MODELS AND OTHER MATTERS OF DETAIL ARE CONCEPTUAL ONLY AND PROVIDED FOR CONVENIENCE OF REFERENCE AND SOLELY FOR THE PURPOSES OF SHOWING APPROXIMATE LEVEL OF QUALITY AND SHOULD NOT BE RELIED UPON BY ANY PURCHASER AS A BASIS FOR PURCHASING A UNIT. NOTHING HEREIN SHOULD BE RELIED UPON AS REPRESENTATIONS, EXPRESS OR IMPLIED, OF THE FINAL DETAIL OF THE UNIT OR PROJECT. THE INFORMATION PROVIDED INCLUDES SPECIFICATIONS, MODELS AND BRANDS, BASED UPON PRELIMINARY DESIGN INFORMATION AND IS SUBJECT TO CHANGE WITHOUT NOTICE. ALL LISTINGS ARE BASED UPON TODAY'S DESIGN MODELS AND FINISHES AND MAY VARY FROM DESIGN MODELS AND OFFERINGS AT THE TIME OF PURCHASE. FOR INSTALLATION IN THE UNIT, DEVELOPER HAS THE RIGHT TO MODIFY, SUBSTITUTE OR CHANGE MATERIALS, SPECIFICATIONS AND/OR COLORS UTILIZED IN FLOOR, WALL, DOOR, CABINETS, COUNTERTOPS AND OTHER ITEMS OF FINISH. CERTAIN OF THE FOREGOING ITEMS ARE SUBJECT TO SIZE AND COLOR VARIATIONS, DESIGN AND QUALITY VARIATIONS, AND MAY IN ANY MANNER CHANGE IN PRICE, AVAILABILITY AND/OR BRANDS. MATERIALS, BRANDS, MODELS AND BRANDS SHOWN OR REFERRED TO ARE FOR INFORMATIONAL PURPOSES ONLY AND ARE NOT TO BE CONSIDERED AS OFFERS. ALL LISTINGS ARE APPROXIMATE AND SUBJECT TO CHANGE. ALL LISTED SERVICES AND MEMBERS OF THE DESIGN TEAM ARE SUBJECT TO CHANGE WITHOUT NOTICE. ALL RITZ-CARLTON SERVICES ARE CONDITIONED UPON APPROPRIATE LICENSES AND/OR AGREEMENTS BEING OBTAINED FOR THE PROVISION OF SUCH SERVICES. CERTAIN SERVICES MAY BE OFFERED FOR AN ADDITIONAL COST. BASIS ONLY. ONLY REPRESENTATIONS CANNOT BE RELIED UPON AS CORRECT STATEMENTS OF THE REPRESENTATIONS. RESERVATIONS SHOULD BE MADE TO THE DEVELOPER THROUGH THE RITZ-CARLTON RESIDENCES. SECTION 1705(b) OF THE FLORIDA STATUTES TO BE FURNISHED BY A DEVELOPER TO BUYER OR LESSEE. THIS OFFERING IS MADE ONLY BY THE OFFERING DOCUMENTS FOR THE CONDOMINIUM AND NO STATEMENT SHOULD BE RELIED UPON IF NOT MADE IN THE OFFERING DOCUMENTS. THIS IS NOT AN OFFER TO SELL, OR SOLICITATION OF OFFERS TO BUY, THE CONDOMINIUM UNITS IN STATES WHERE SUCH OFFER OR SOLICITATION CANNOT BE MADE. PRICES, PLANS, AND SPECIFICATIONS ARE SUBJECT TO CHANGE WITHOUT NOTICE.

WE ARE PLEDGED TO THE LETTER AND SPIRIT OF THE U.S. POLICY FOR ADVERTISEMENT OF EQUAL HOUSING OPPORTUNITY THROUGHOUT THE NATION. WE ENCOURAGE AND SUPPORT AN AFFIRMATIVE ADVERTISING AND MARKETING PROGRAM IN WHICH THERE ARE NO BARRIERS TO OBTAINING HOUSING BECAUSE OF RACE, COLOR, RELIGION, SEX, HANDICAP, RACIAL STATUS OR NATIONAL ORIGIN.



THE RITZ-CARLTON RESIDENCES

SOUTH BEACH

OWNER BENEFITS WITH MARRIOTT INTERNATIONAL

RESIDENCE OWNERS AT THE RITZ-CARLTON RESIDENCES, SOUTH BEACH RECEIVE BENEFITS AT OVER 700 PARTICIPATING HOTELS WITHIN MARRIOTT INTERNATIONAL'S LUXURY PORTFOLIO, INCLUDING EDITION, THE RITZ-CARLTON, ST. REGIS, LUXURY COLLECTION, W, AND JW MARRIOTT.

CURRENT BENEFITS INCLUDE:

- 10% OFF REGULAR ROOM RATE, BASED ON AVAILABILITY
- UPGRADE AT CHECK-IN BASED UPON AVAILABILITY
- BREAKFAST FOR TWO DAILY
- 4 P.M. CHECKOUT BASED UPON AVAILABILITY
- WELCOME AMENITY AND NOTE FROM THE HOTEL'S GENERAL MANAGER
- A SPECIAL ADDITIONAL HOTEL AMENITY, USUALLY A FOOD AND BEVERAGE OR SPA CREDIT
- COMPLIMENTARY BASIC HIGH-SPEED WIRELESS INTERNET ACCESS

THE RITZ-CARLTON RESIDENCES, SOUTH BEACH

1671 COLLINS AVE MIAMI BEACH, FL 33139

THE RITZ-CARLTON RESIDENCES, SAGAMORE SOUTH BEACH ARE NOT OWNED, DEVELOPED OR SOLD BY THE RITZ-CARLTON HOTEL COMPANY, L.L.C. OR ITS AFFILIATES. THE RITZ-CARLTON, SAGAMORE SOUTH BEACH DEVELOPMENT, L.L.C. USES THE RITZ-CARLTON MARKS UNDER LICENSE FROM THE RITZ-CARLTON, WHICH HAS NOT CONFIRMED THE ACCURACY OF ANY OF THE STATEMENTS OR REPRESENTATIONS MADE. GENERAL DESCRIPTIONS OF FINISHES, SPECIFICATIONS, BRANDS, MODELS AND OTHER MATTERS OF DETAIL ARE CONCEPTUAL ONLY AND PROVIDED FOR CONVENIENCE OF REFERENCE AND SOLELY FOR THE PURPOSES OF SHOWING APPROXIMATE LEVELS OF QUALITY AND SHOULD NOT BE RELIED UPON BY BUYERS AS A BASIS FOR PURCHASING A UNIT. NOTHING HEREIN SHOULD BE RELIED UPON AS REPRESENTATIONS, EXPRESS OR IMPLIED, OF THE FINAL DETAIL OF THE UNIT OR PROJECT. THE INFORMATION PROVIDED INCLUDES SPECIFICATIONS, MODELS AND BRANDS BASED UPON PRELIMINARY DEVELOPMENT PLANS AND IS SUBJECT TO CHANGE WITHOUT NOTICE. ALL LETTERS ARE BASED UPON TODAY'S DESIGN, MODEL, BRANDS OF FINISHES AND MATERIALS FROM DESIGNERS, MODELS AND OFFERINGS AT THE TIME OF PURCHASE. FOR INSTALLATION IN THE UNIT, DEVELOPER HAS THE RIGHT TO MODIFY, SUBSTITUTE OR CHANGE MATERIALS, SPECIFICATIONS AND/OR COLORS UTILIZED IN FLOOR, WALL, DOOR, CABINETS, COUNTERTOPS AND OTHER ITEMS OF FINISH. CHOICES OF THE FINISHED ITEMS ARE SUBJECT TO SIZE AND COLOR VARIATIONS, DESIGN AND QUALITY VARIATIONS AND ANY VARIATIONS WITH FINISH, AVAILABILITY AND/OR BRANDS. MATERIALS, BRANDS, MODELS AND BRANDS SHOWN OR REFERRED TO ARE SUBJECT TO CHANGE WITHOUT NOTICE. ALL RITZ-CARLTON SERVICES ARE CONDITIONED UPON APPROPRIATE LICENSES AND/OR AGREEMENTS BEING OBTAINED FOR THE PROVISION OF SUCH SERVICES. CERTAIN SERVICES MAY BE OFFERED FOR A SEPARATE FEE OR ON AN A LA CARTE BASIS. ONLY ONE REPRESENTATIVE CANNOT BE RELIED UPON AS CORRECTLY STATE THE REPRESENTATIONS. REPRESENTATIONS SHOULD BE MADE TO THE DOCUMENTS REFERRED BY SECTION THREE. FLOOR PLANS SHOULD BE FURNISHED BY A DEVELOPER TO BUYER OR LESSEE. THIS OFFERING IS MADE ONLY BY THE OFFERING DOCUMENTS FOR THE CONDOMINIUM AND NO STATEMENT SHOULD BE RELIED UPON IF NOT MADE IN THE OFFERING DOCUMENTS. THIS IS NOT AN OFFER TO SELL OR SOLICITATION OF OFFERS TO BUY THE CONDOMINIUM UNITS IN STATES WHERE SUCH OFFER OR SOLICITATION CANNOT BE MADE. PRICES, PLANS AND SPECIFICATIONS ARE SUBJECT TO CHANGE WITHOUT NOTICE.

WE ARE PLEDGED TO THE LETTER AND SPIRIT OF THE U.S. POLICY FOR ADVERTISEMENT OF EQUAL HOUSING OPPORTUNITY THROUGHOUT THE NATION. WE ENCOURAGE AND SUPPORT AN AFFIRMATIVE ADVERTISING AND MARKETING PROGRAM IN WHICH THERE ARE NO BARRIERS TO OBTAINING HOUSING BECAUSE OF RACE, COLOR, RELIGION, SEX, HANDICAP, RACIAL STATUS OR NATIONAL ORIGIN.









THE RITZ-CARLTON



LINCOLN ROAD

THE RITZ-CARLTON

AMENITIES

















THE RITZ-CARLTON
RESIDENCES

SOUTH BEACH







SUITE



















































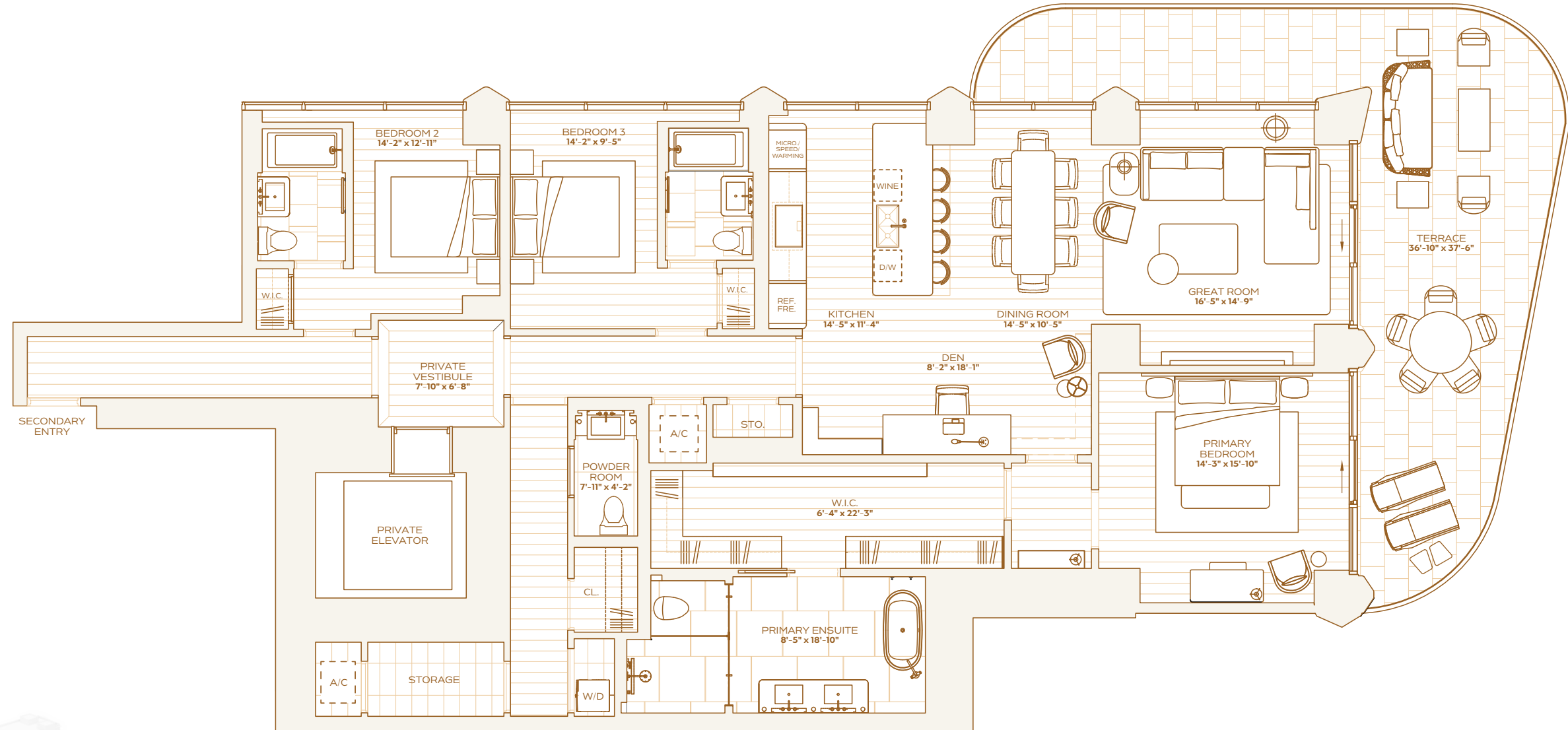
RESIDENCE A LEVEL 5 & 6

THREE BEDROOMS
THREE BATHROOMS
POWDER ROOM

INTERIOR
2,389 SQ. FT / 222 SQ. M

EXTERIOR
602 SQ. FT / 56 SQ. M

TOTAL
2,991 SQ. FT / 278 SQ. M





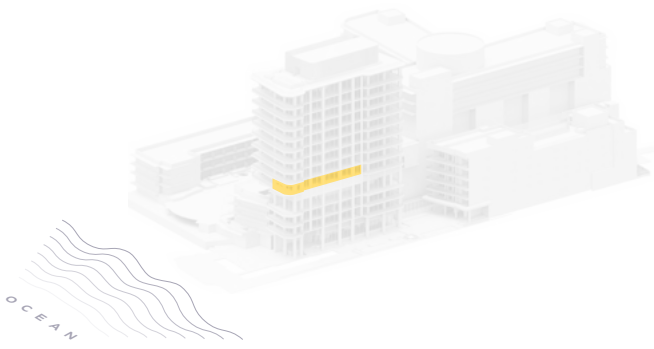
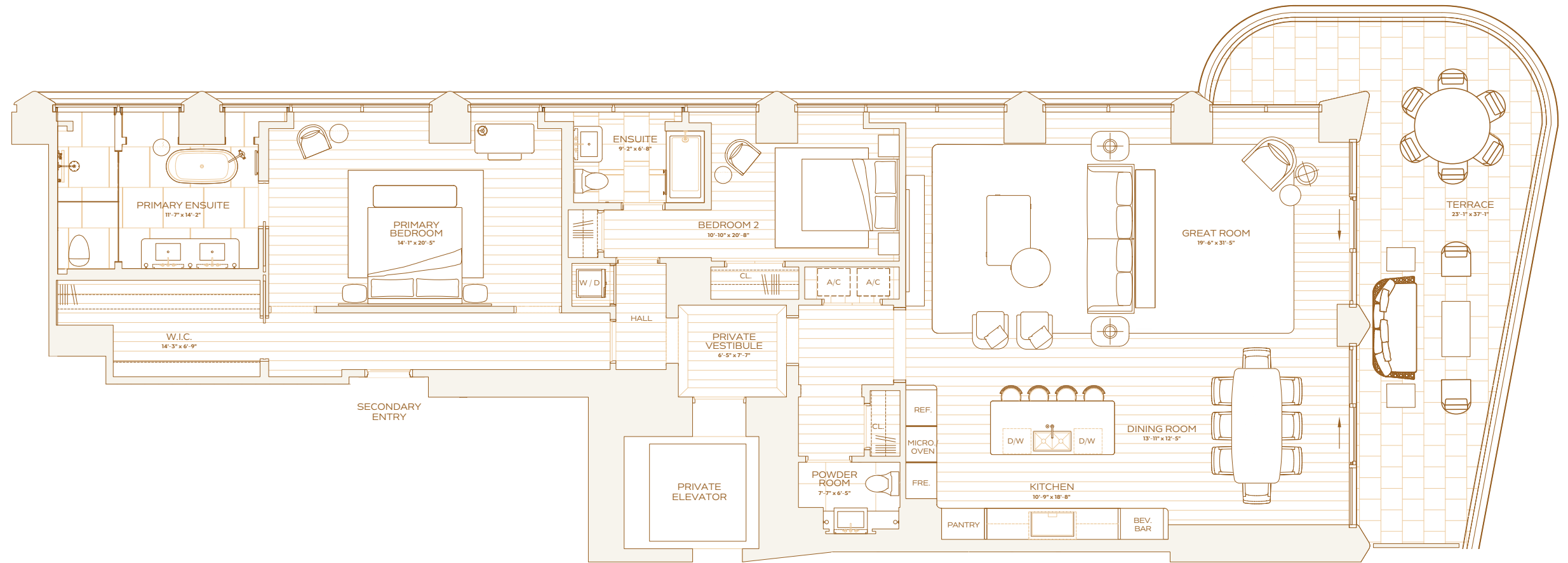
RESIDENCE A LEVEL 8

TWO BEDROOMS
TWO BATHROOMS
POWDER ROOM

INTERIOR
2,210 SQ. FT. / 205 SQ. M

EXTERIOR
449 SQ. FT. / 42 SQ. M

TOTAL
2,659 SQ. FT. / 247 SQ. M



OCEAN



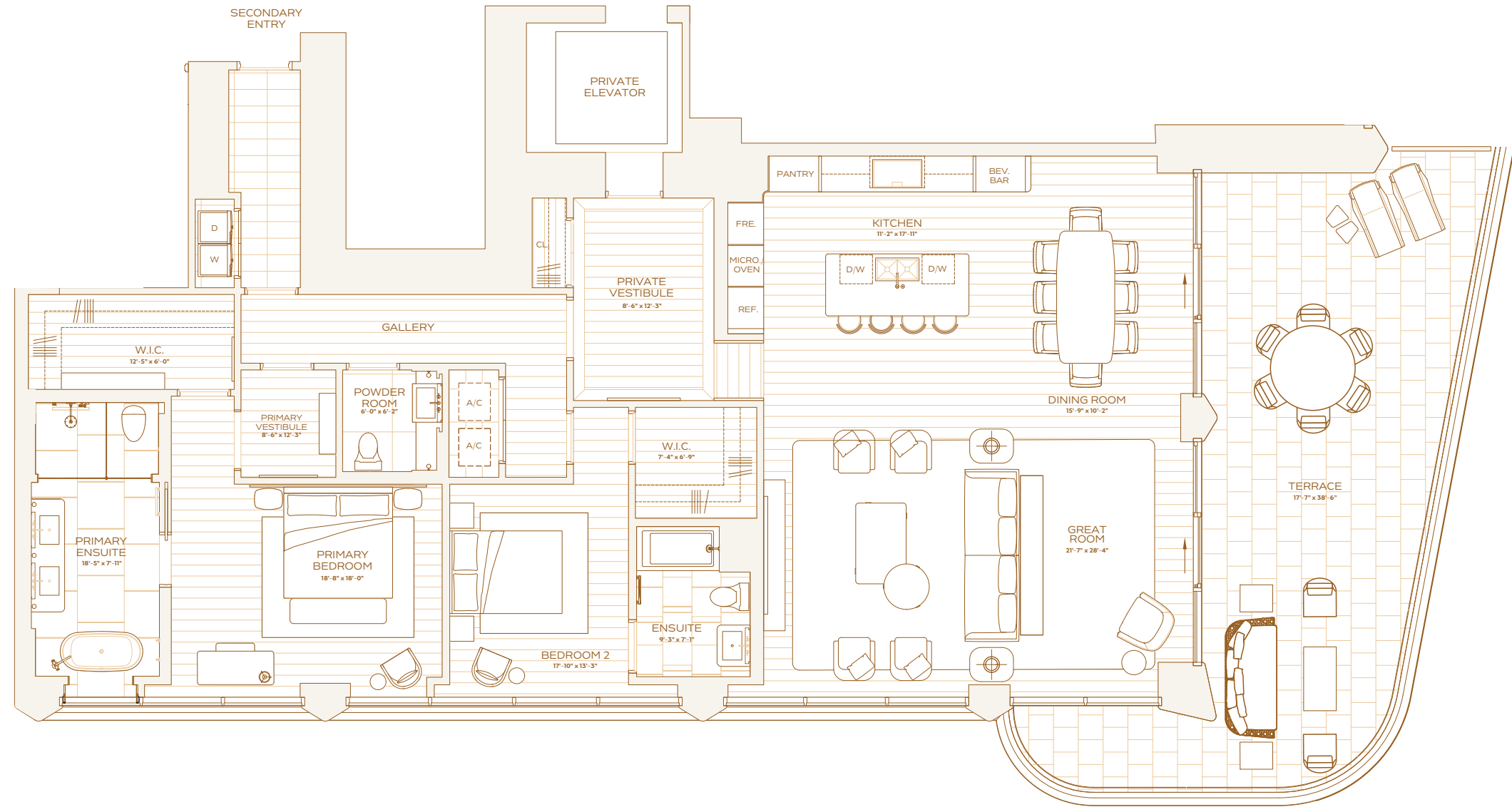
RESIDENCE B LEVEL 8

TWO BEDROOMS
TWO BATHROOMS
POWDER ROOM

INTERIOR
2,217 SQ. FT / 205 SQ. M

EXTERIOR
591 SQ. FT / 55 SQ. M

TOTAL
2,808 SQ. FT / 261 SQ. M





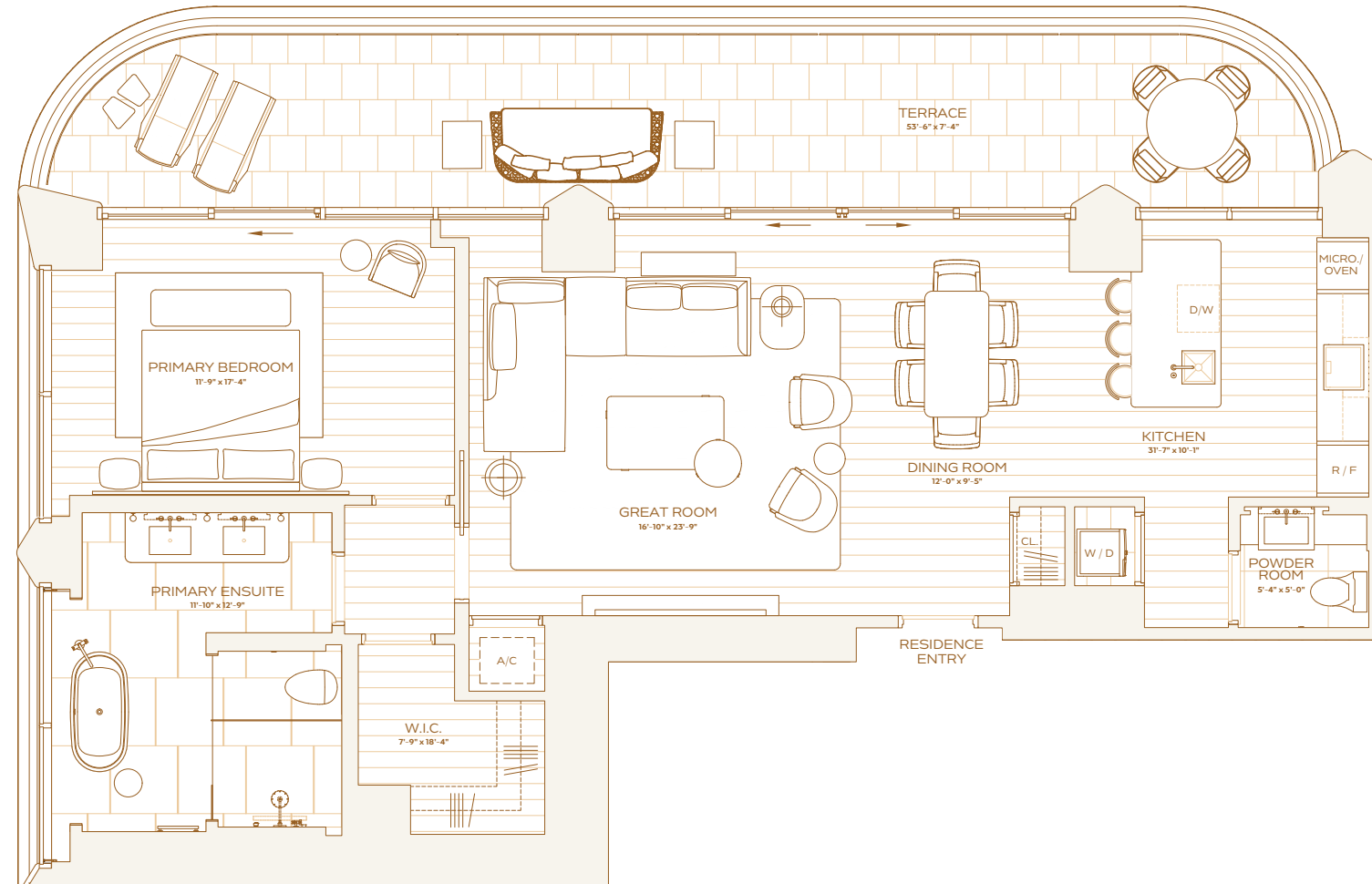
RESIDENCE D LEVEL 8

ONE BEDROOM
ONE BATHROOM
POWDER ROOM

INTERIOR
1,197 SQ. FT / 111 SQ. M

EXTERIOR
385 SQ. FT / 36 SQ. M

TOTAL
1,582 SQ. FT / 147 SQ. M





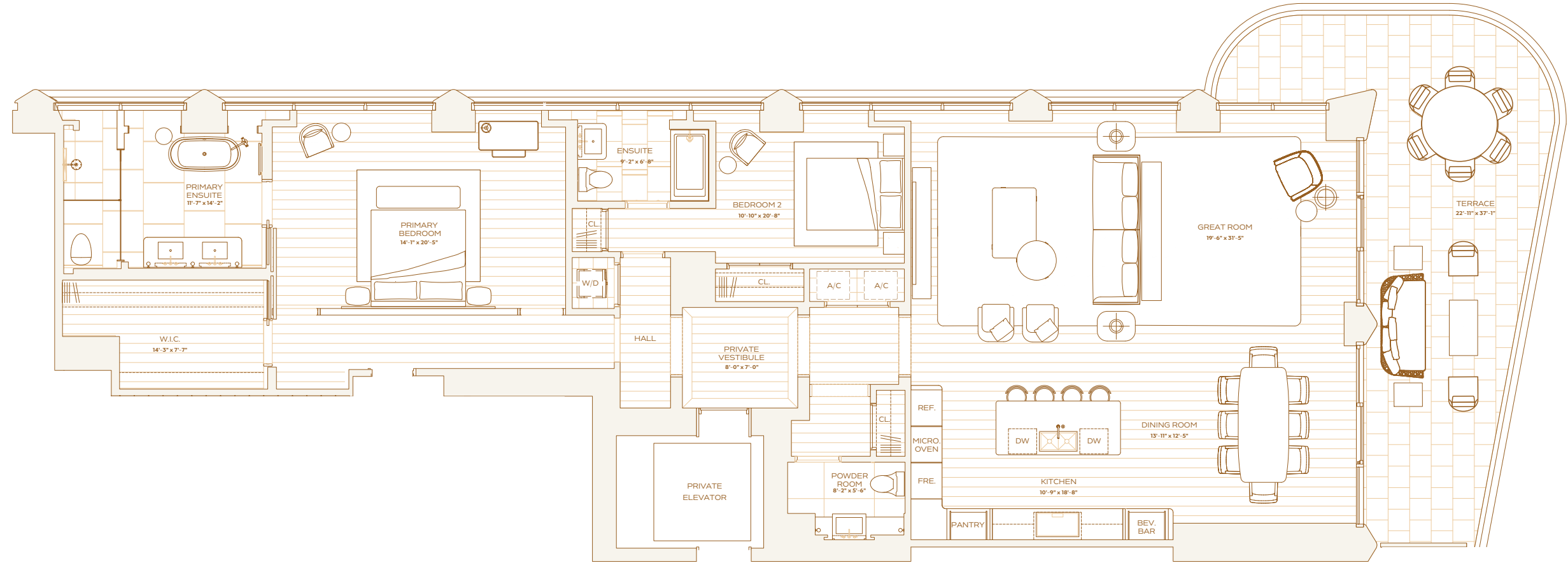
RESIDENCE A LEVEL 9 & 10

TWO BEDROOMS
TWO BATHROOMS
POWDER ROOM

INTERIOR
2,245 SQ. FT / 208 SQ. M

EXTERIOR
449 SQ. FT / 42 SQ. M

TOTAL
2,694 SQ. FT / 250 SQ. M



OCEAN



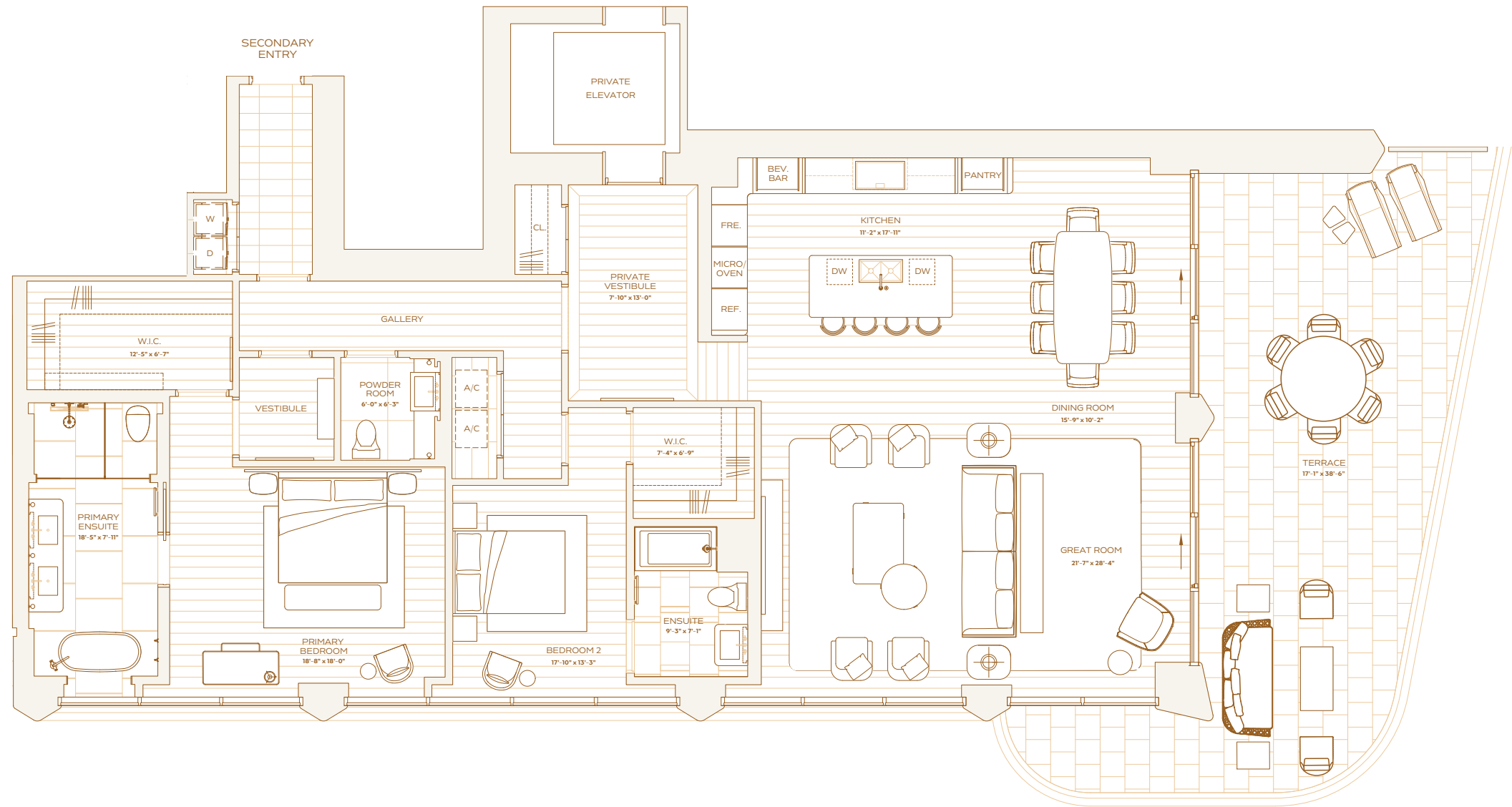
RESIDENCE B LEVEL 9 & 10

TWO BEDROOMS
TWO BATHROOMS
POWDER ROOM

INTERIOR
2,247 SQ. FT / 209 SQ. M

EXTERIOR
591 SQ. FT / 55 SQ. M

TOTAL
2,838 SQ. FT / 264 SQ. M





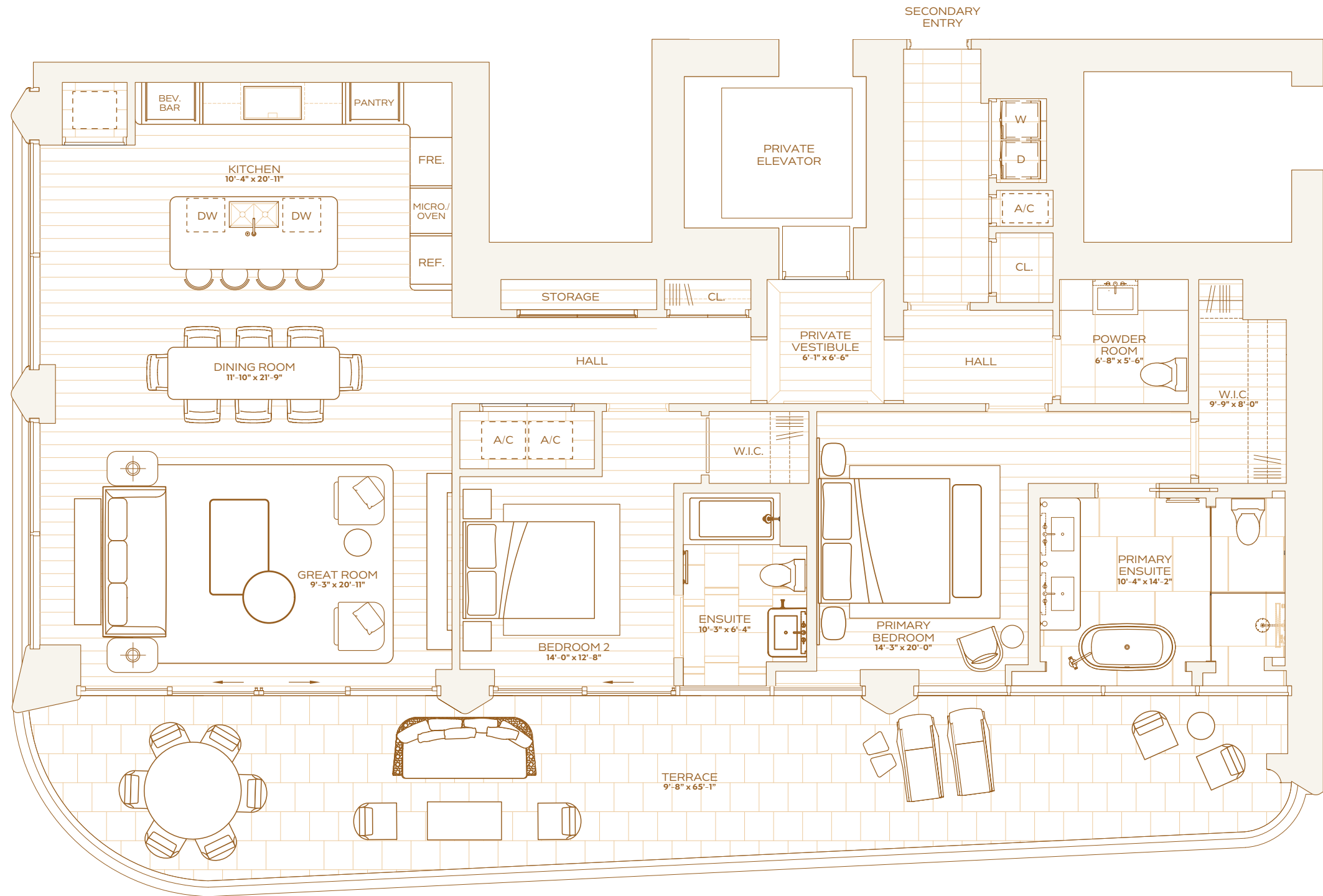
RESIDENCE C LEVEL 9 & 10

TWO BEDROOMS
TWO BATHROOMS
POWDER ROOM

INTERIOR
1,781 SQ. FT / 165 SQ. M

EXTERIOR
527 SQ. FT / 49 SQ. M

TOTAL
2,308 SQ. FT / 214 SQ. M





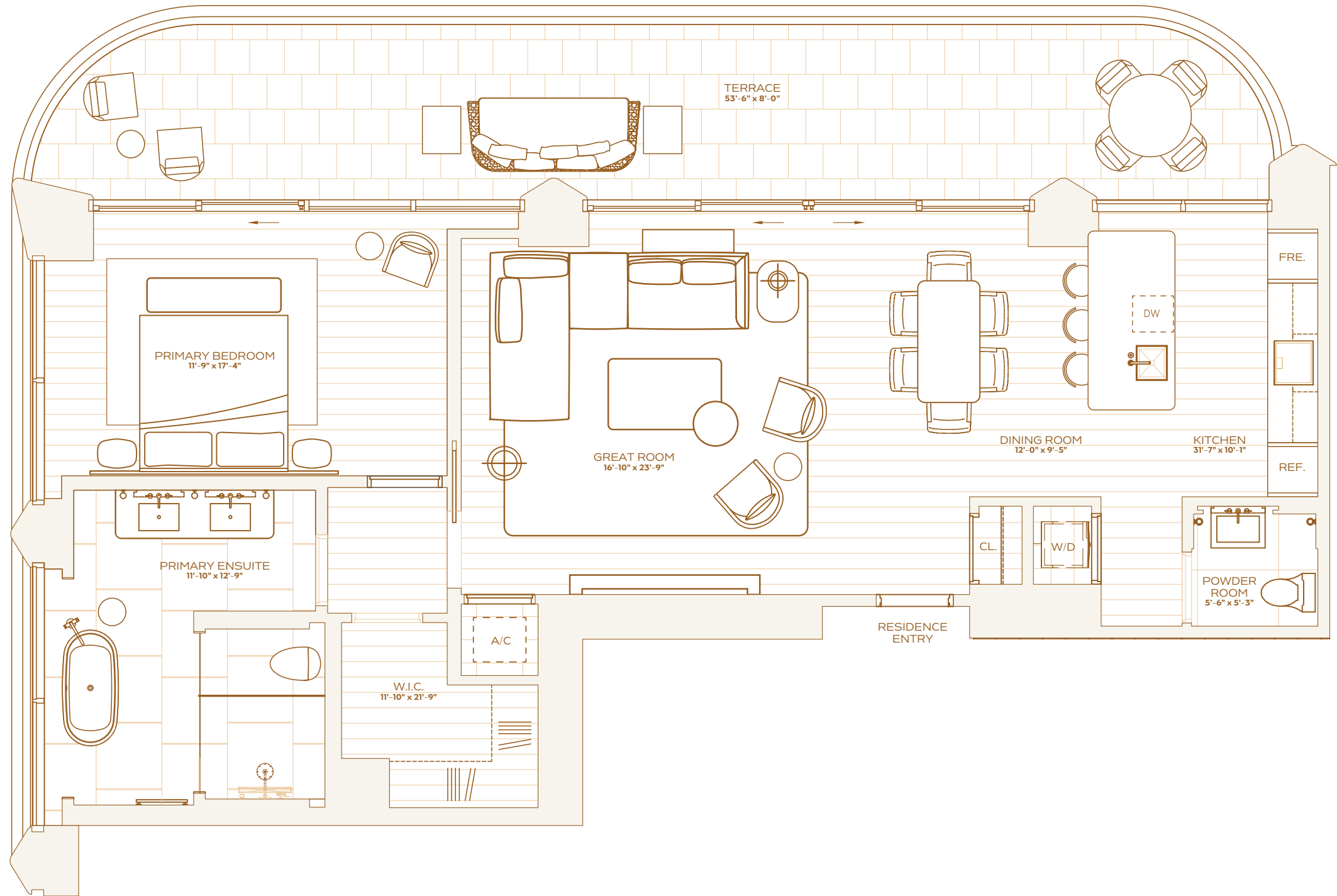
RESIDENCE D LEVEL 9 & 10

ONE BEDROOM
ONE BATHROOM
POWDER ROOM

INTERIOR
1,210 SQ. FT / 112 SQ. M

EXTERIOR
385 SQ. FT / 36 SQ. M

TOTAL
1,595 SQ. FT / 148 SQ. M



OCEAN



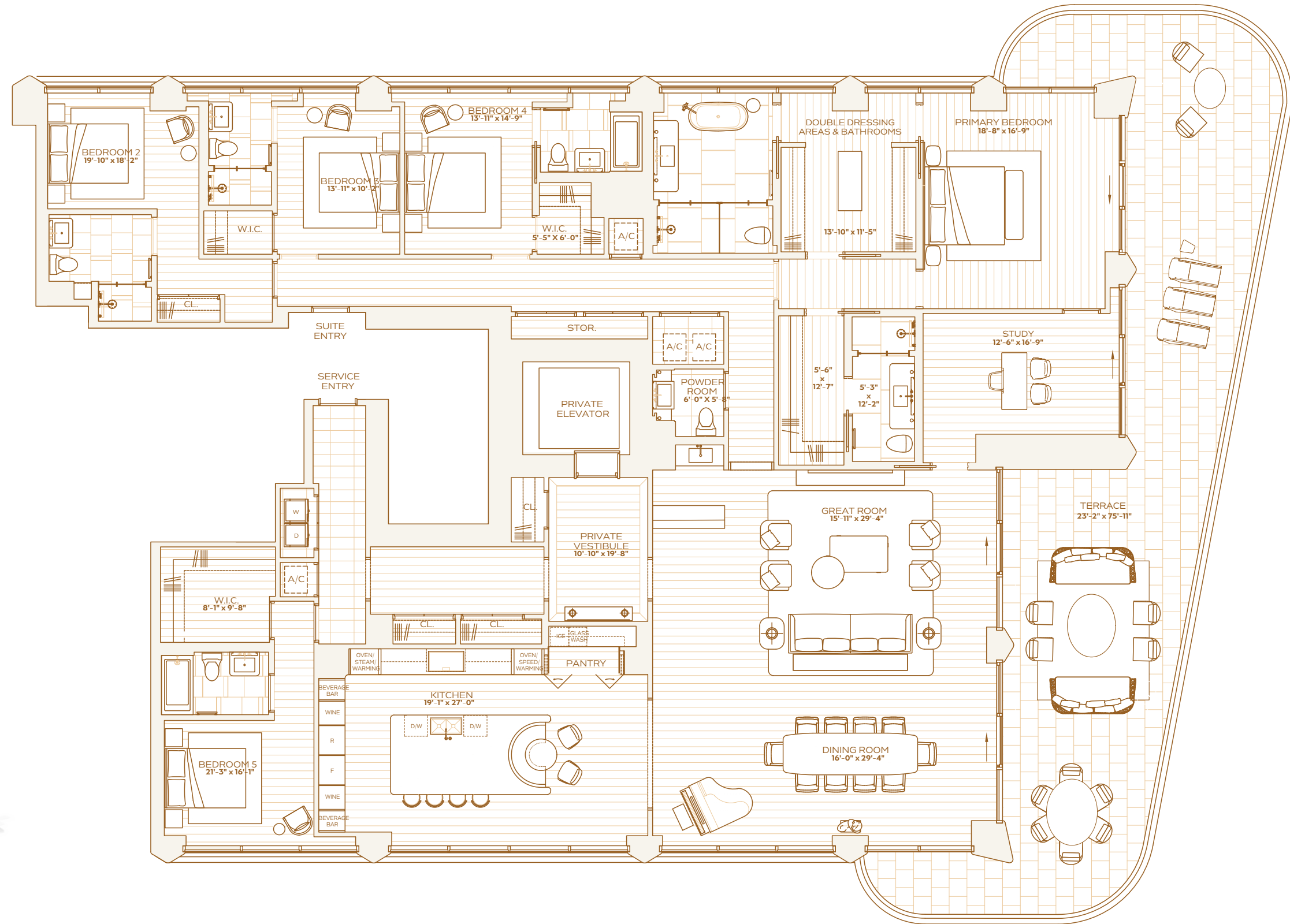
RESIDENCE A LEVEL 11-12

FIVE BEDROOMS
SIX BATHROOMS
POWDER ROOM

INTERIOR
4,481 SQ. FT. / 416 SQ. M

EXTERIOR
1,040 SQ. FT. / 96 SQ. M

TOTAL
5,521 SQ. FT. / 513 SQ. M





THE RITZ-CARLTON RESIDENCES
SOUTH BEACH

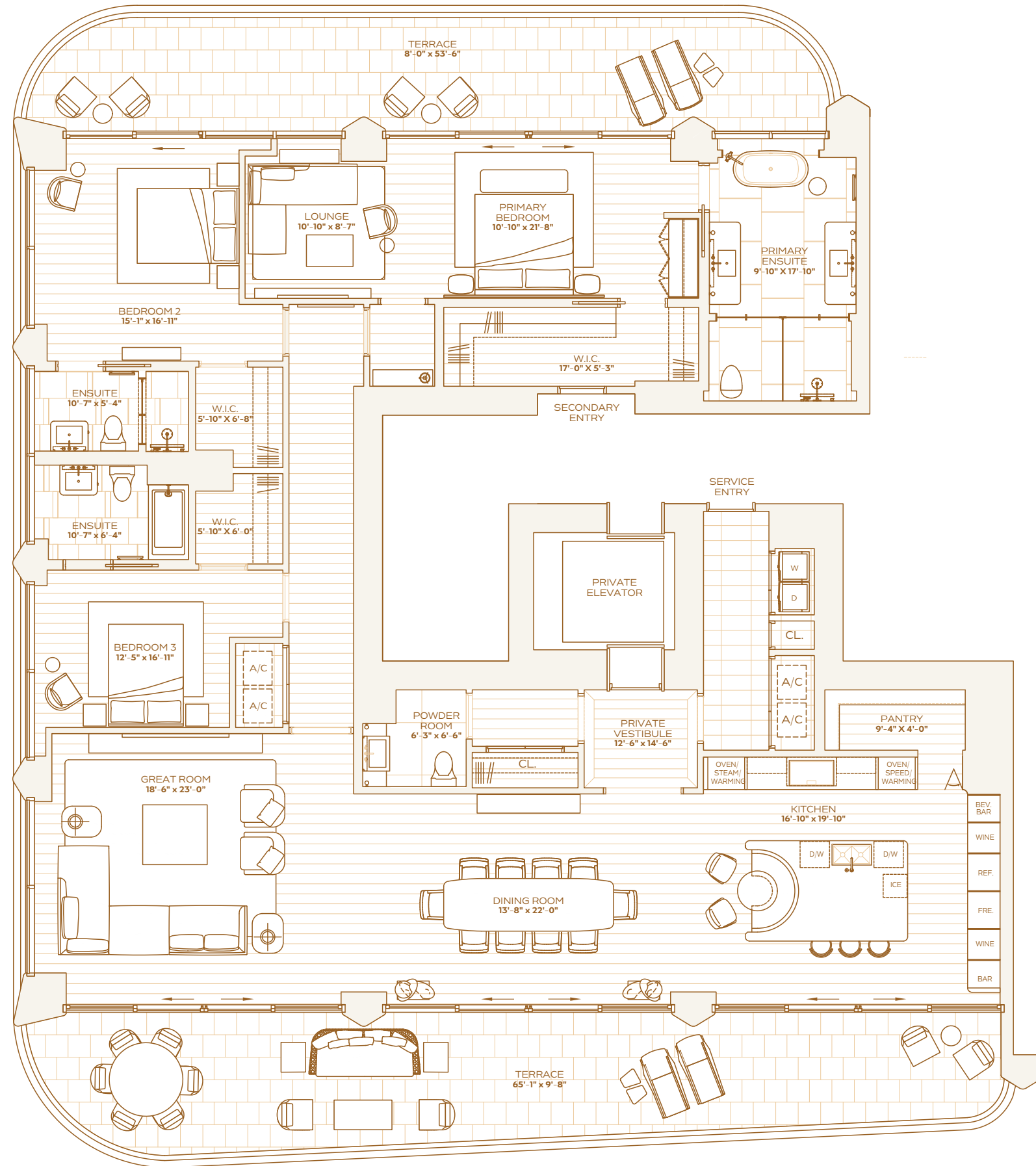
RESIDENCE B LEVEL 11-12

THREE BEDROOMS
THREE BATHROOMS
POWDER ROOM

INTERIOR
3,006 SQ. FT / 279 SQ. M

EXTERIOR
912 SQ. FT / 85 SQ. M

TOTAL
3,918 SQ. FT / 364 SQ. M



OCEAN



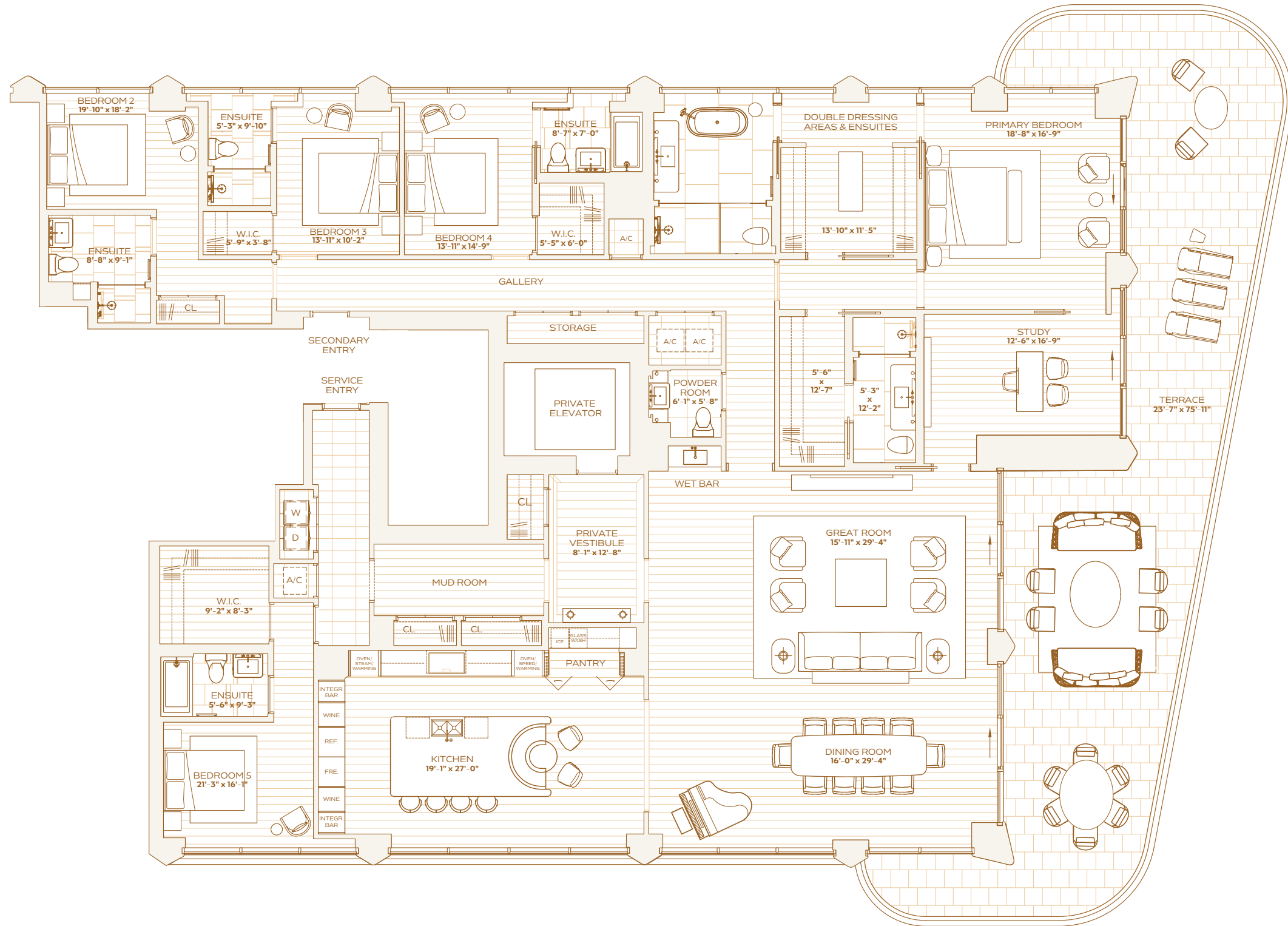
RESIDENCE A LEVEL 14-16

FIVE BEDROOMS
STUDY
SIX BATHROOMS
POWDER ROOM

INTERIOR
4,520 SQ. FT / 420 SQ. M

EXTERIOR
1,040 SQ. FT / 97 SQ. M

TOTAL
5,560 SQ. FT / 517 SQ. M





THE RITZ-CARLTON RESIDENCES
SOUTH BEACH

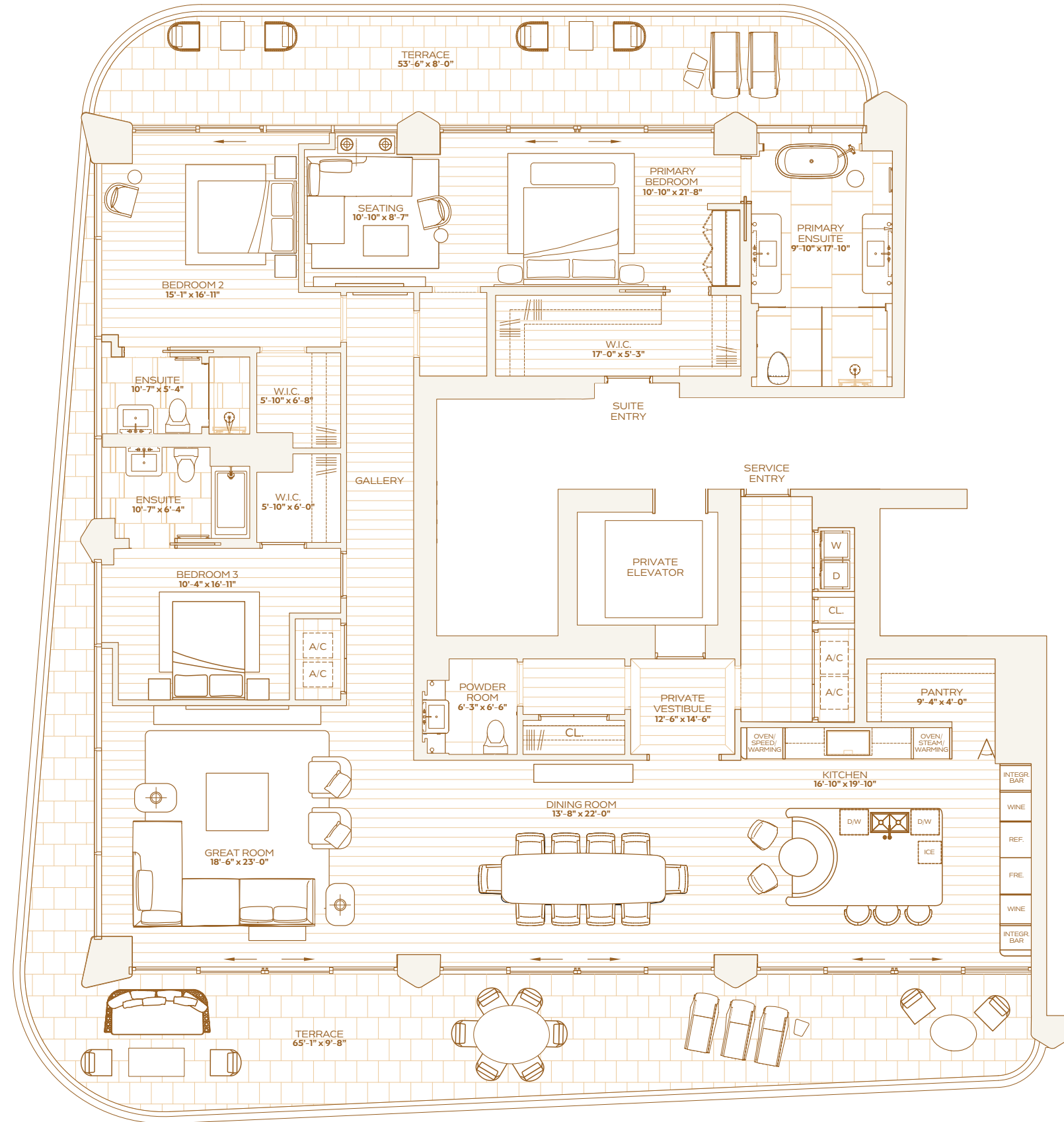
RESIDENCE B LEVEL 14-16

THREE BEDROOMS
THREE BATHROOMS
POWDER ROOM

INTERIOR
3,006 SQ. FT / 279 SQ. M

EXTERIOR
912 SQ. FT / 85 SQ. M

TOTAL
3,918 SQ. FT / 364 SQ. M



OCEAN





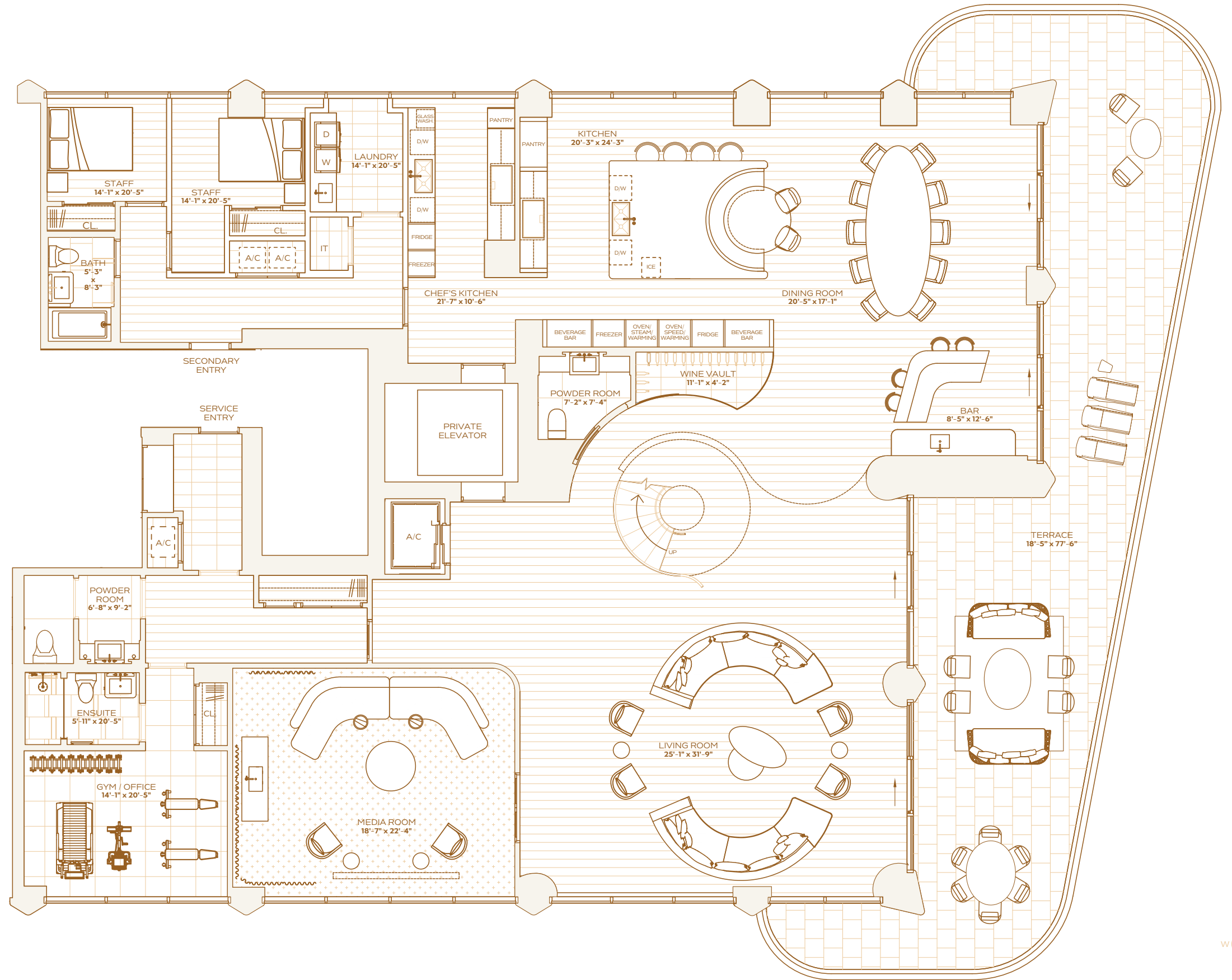
PENTHOUSE A
LEVEL 17
LOWER FLOOR

SEVEN BEDROOMS
EIGHT BATHROOMS
TWO POWDER ROOMS

INTERIOR
8,104 SQ. FT. / 753 SQ. M

EXTERIOR
1,482 SQ. FT. / 137 SQ. M

TOTAL
9,586 SQ. FT. / 890 SQ. M



OCEAN

OCEAN



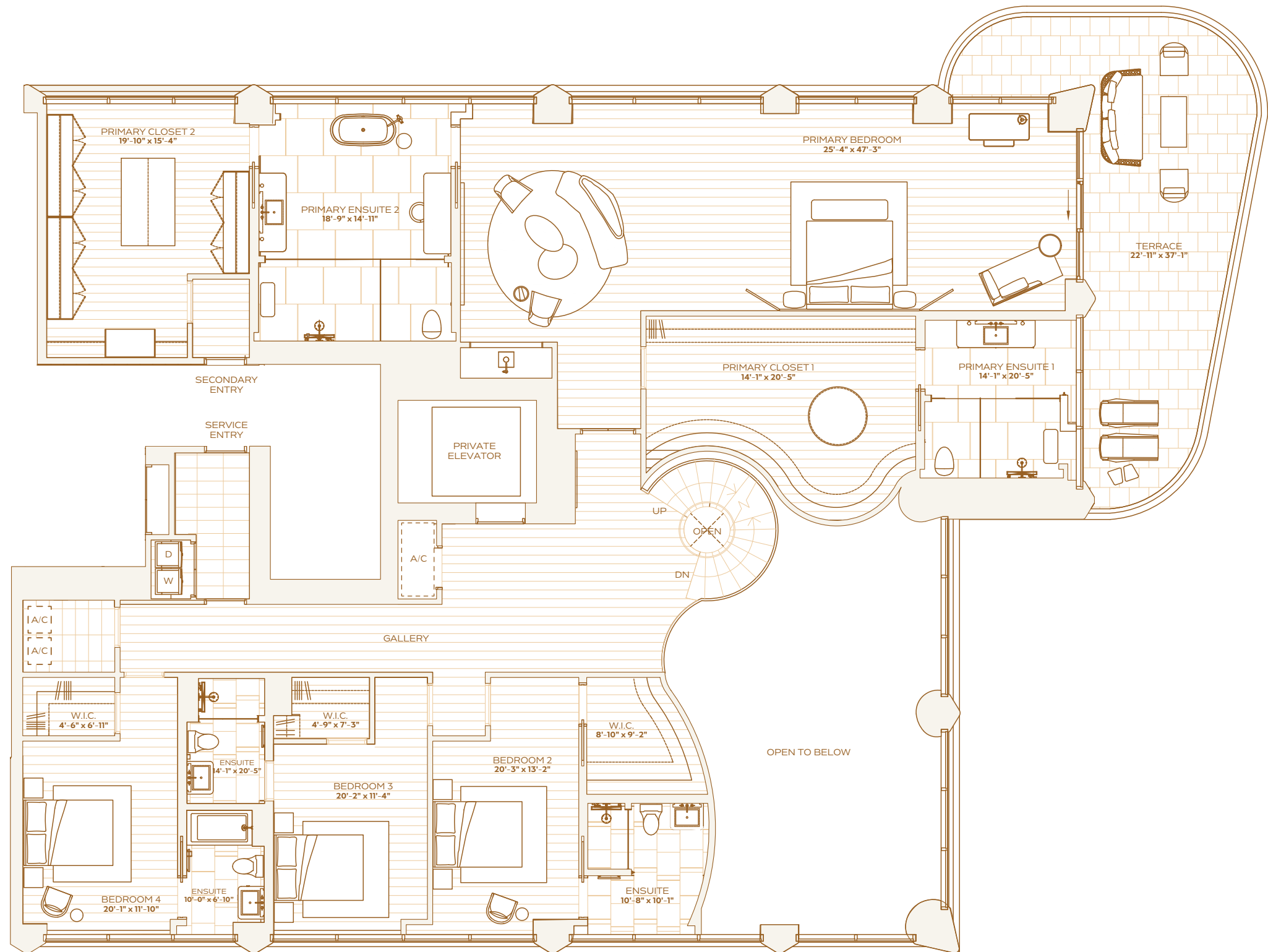
PENTHOUSE A
LEVEL 18
UPPER FLOOR

SEVEN BEDROOMS
EIGHT BATHROOMS
TWO POWDER ROOMS

INTERIOR
8,104 SQ. FT. / 753 SQ. M

EXTERIOR
1,482 SQ. FT. / 137 SQ. M

TOTAL
9,586 SQ. FT. / 890 SQ. M



OCEAN



OCEAN





THE RITZ-CARLTON RESIDENCES
SOUTH BEACH

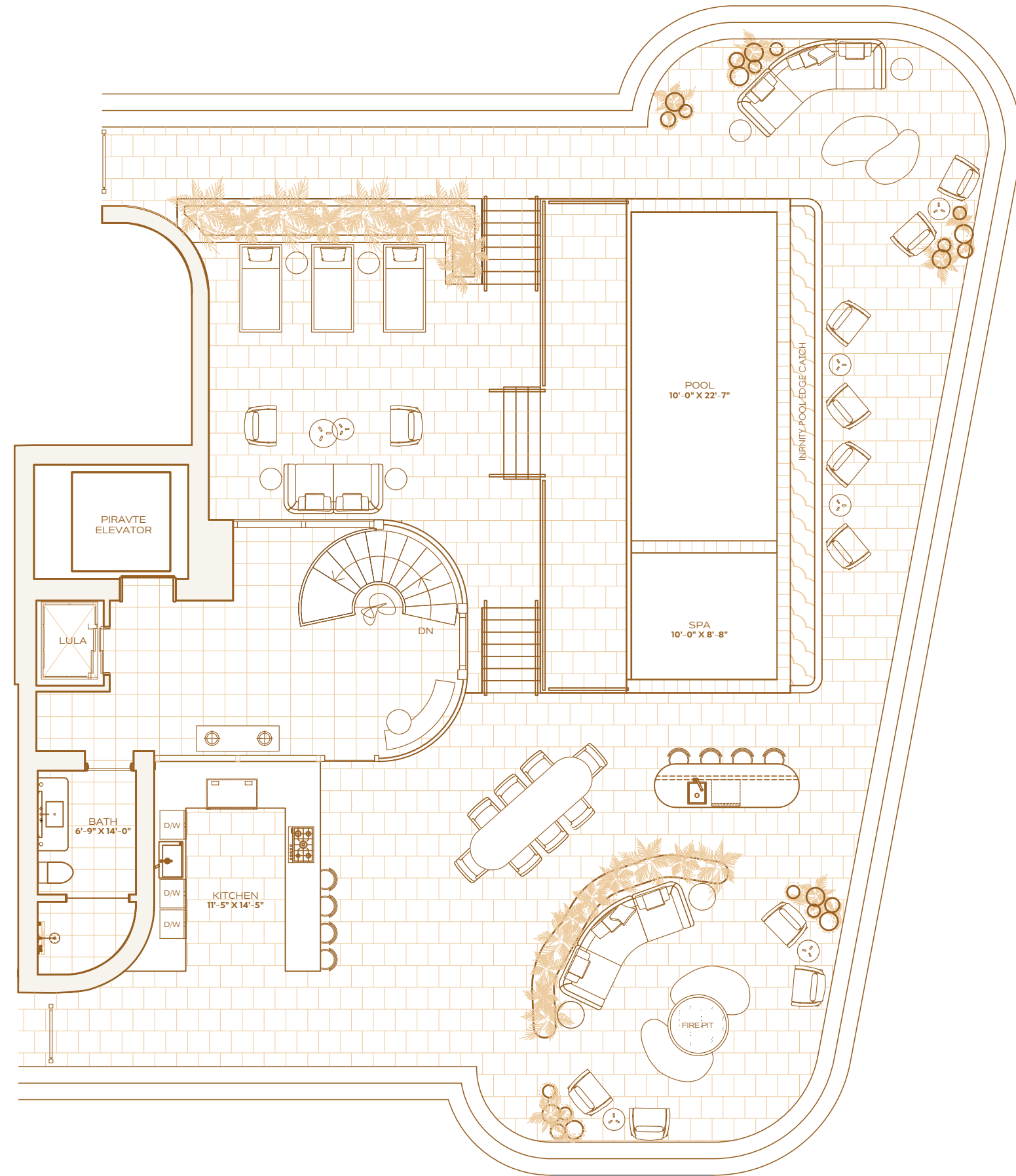
PENTHOUSE A
LEVEL 19
ROOFTOP

SEVEN BEDROOMS
EIGHT BATHROOMS
TWO POWDER ROOMS

INTERIOR
8,104 SQ. FT. / 753 SQ. M

EXTERIOR
1,482 SQ. FT. / 137 SQ. M

TOTAL
9,586 SQ. FT. / 890 SQ. M



OCEAN



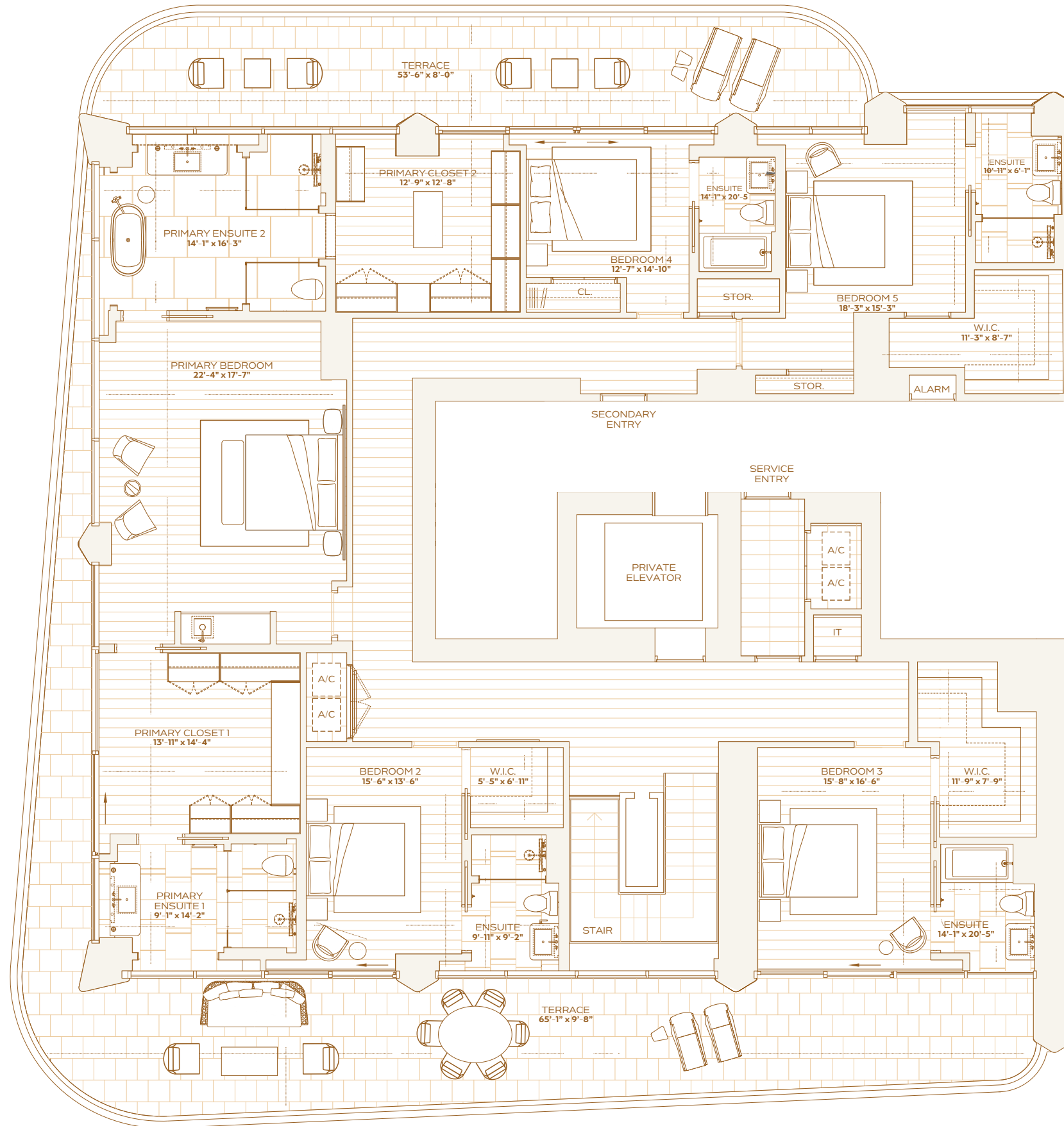
PENTHOUSE B
LEVEL 18
UPPER FLOOR

SIX BEDROOMS
SEVEN BATHROOMS
TWO POWDER ROOMS

INTERIOR
6,534 SQ. FT. / 607 SQ. M

EXTERIOR
2,236 SQ. FT. / 208 SQ. M

TOTAL
8,770 SQ. FT. / 815 SQ. M





THE RITZ-CARLTON RESIDENCES
SOUTH BEACH

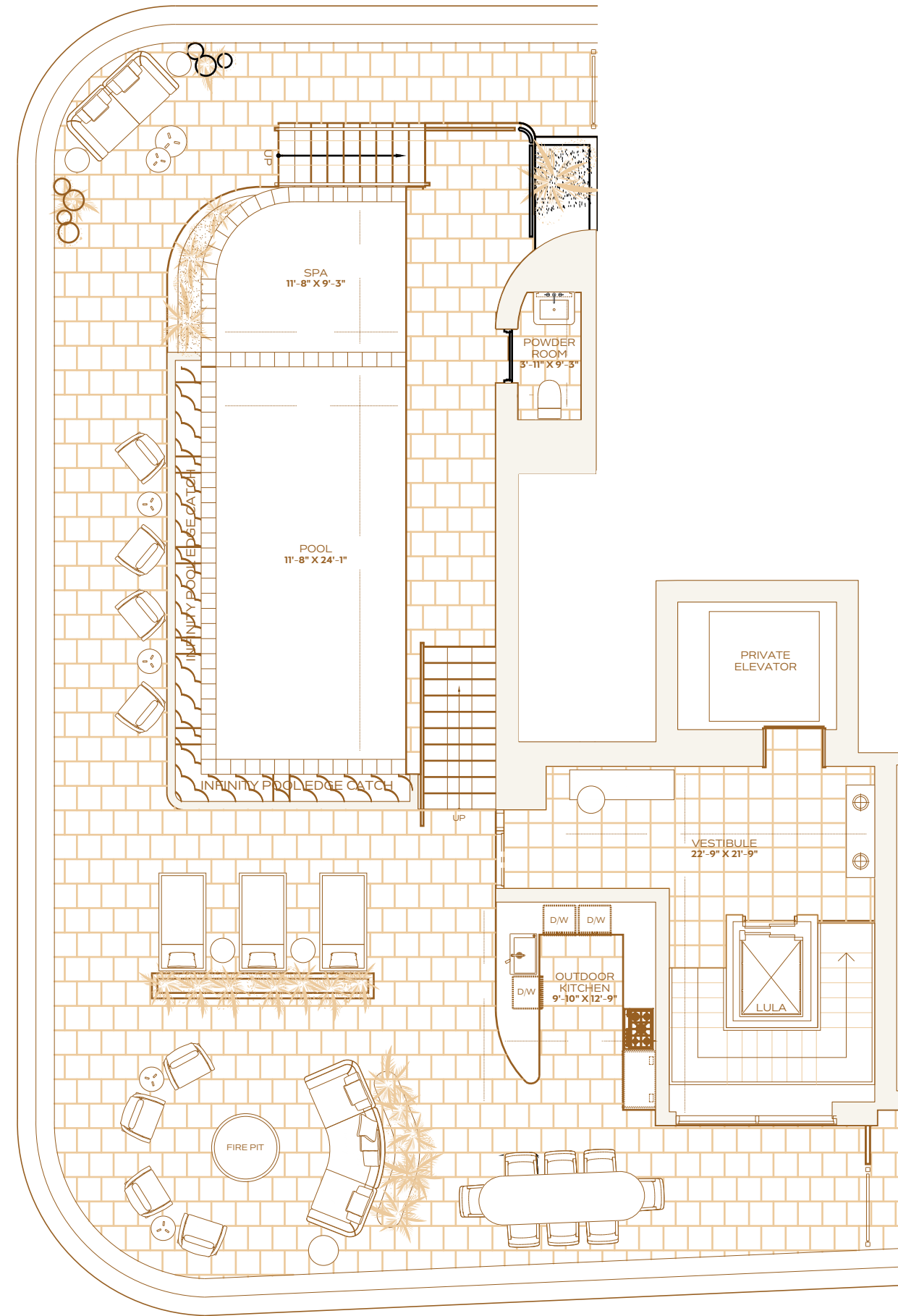
PENTHOUSE B
LEVEL 19
ROOFTOP

SIX BEDROOMS
SEVEN BATHROOMS
TWO POWDER ROOMS

INTERIOR
6,534 SQ. FT. / 607 SQ. M

EXTERIOR
2,236 SQ. FT. / 208 SQ. M

TOTAL
8,770 SQ. FT. / 815 SQ. M



OCEAN