



4 bedroom / 4 bathroom

2,816sf (12th-42nd floors)

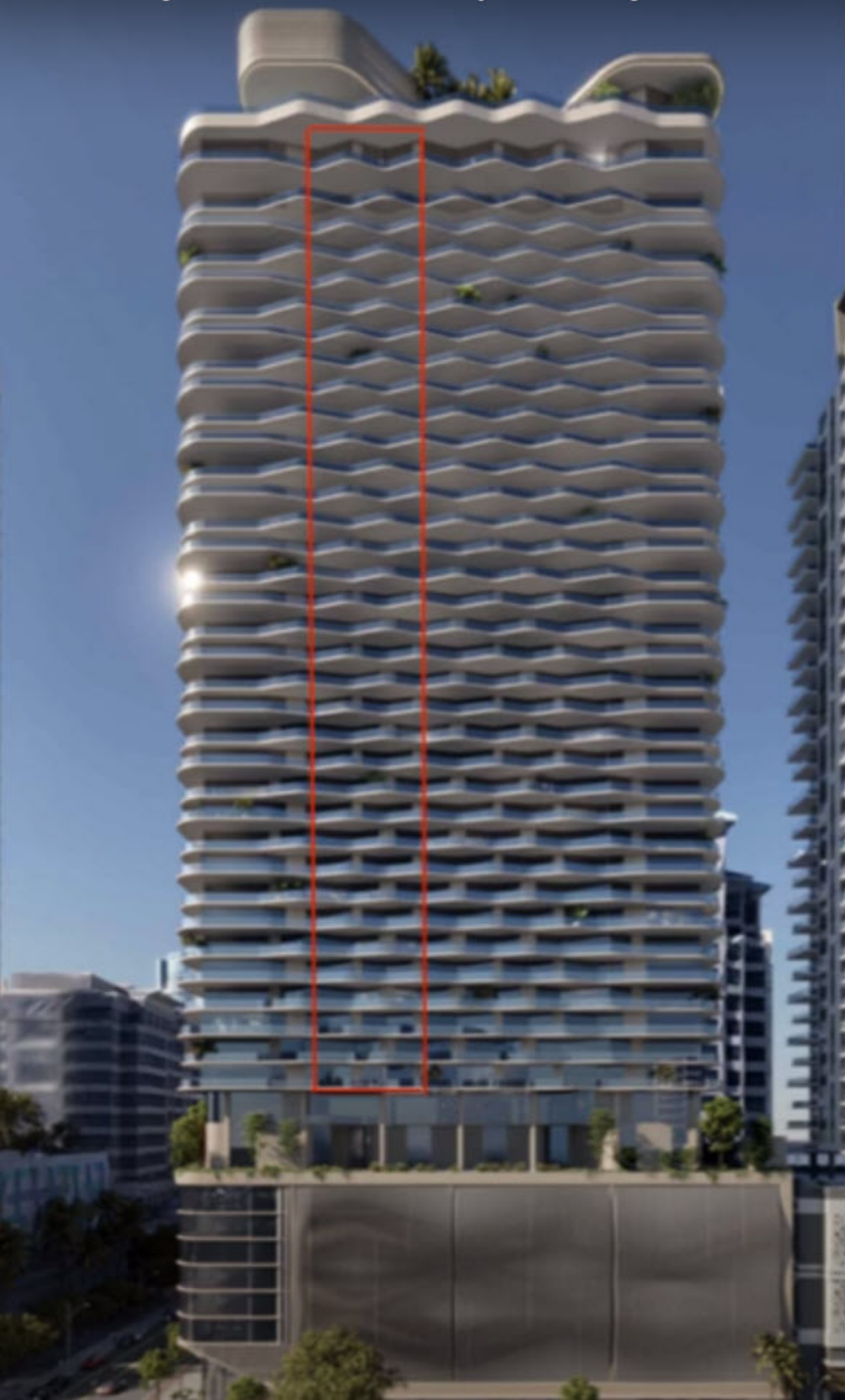
UNIT Da



- 4 bedroom / 4 bathroom
- 2,816sf
- Semi private elevator directly into residence
- Large wrap around balcony
- Oversized primary bedroom with dual closets and direct ocean views
- Large primary bath with dual sinks, large walk in shower and stand alone tub
- Secondary bedrooms with views to South and downtown skyline
- Laundry Room with sink
- Premium kitchen with Ital-kraft cabinetry, Quartz countertops and premium appliances
- clear railings for unobstructed views
- Spacious living/dining combo area

2 bedroom / 2.5 bathroom

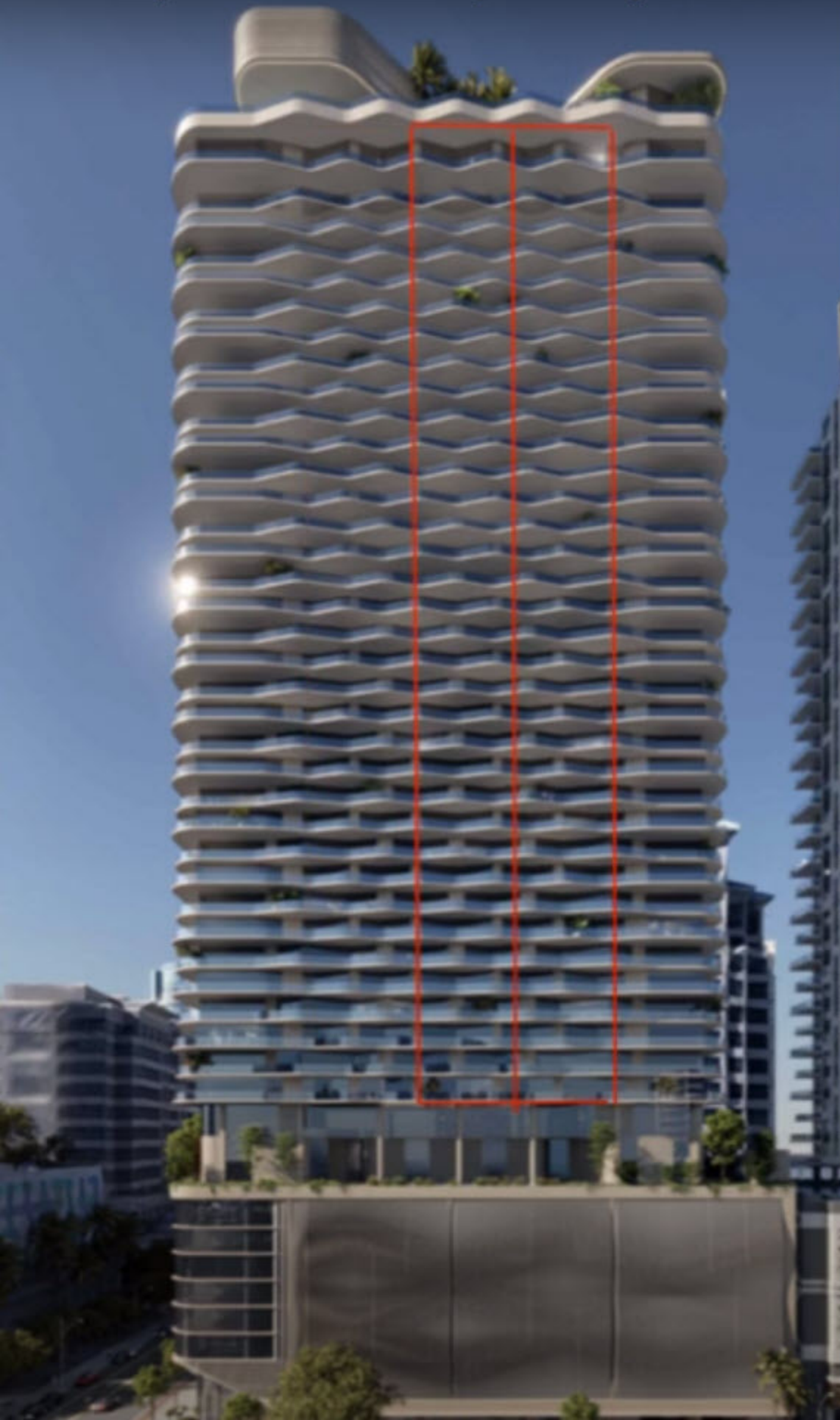
1,816sf (12th-42nd floors)



02
2 B
2 1/2 B



- 2 bedroom / 2.5 bathroom
- 1,816sf
- Semi private elevator directly into residence
- Ocean view balcony
- Oversized primary bedroom with dual closets and direct ocean views
- Large primary bath with dual sinks, large walk in shower and stand alone tub
- Secondary bedroom with views downtown skyline
- Laundry closet
- Premium kitchen with Ital-kraft cabinetry, Quartz countertops and premium appliances
- Clear railings for unobstructed views
- Spacious living/dining combo area



3 bedroom / 3.5 bathroom

2,138-2,182sf (12th-42nd floors)



- 3 bedroom / 3.5 bathroom
- 2,138-2,182sf
- Semi private elevator directly into residence
- Ocean view balcony
- Oversized primary bedroom with dual closets and direct ocean views
- Large primary bath with dual sinks, large walk in shower and stand alone tub
- Secondary bedrooms with views to North and downtown skyline
- Laundry Room with sink
- Premium kitchen with Ital-kraft cabinetry, Quartz countertops and premium appliances
- clear railings for unobstructed views
- Spacious living/dining combo area



3 bedroom / 3.5 bathroom

2,138-2,182sf (12th-42nd floors)



- 3 bedroom / 3.5 bathroom
- 2,138-2,182sf
- Semi private elevator directly into residence
- Ocean view balcony
- Oversized primary bedroom with dual closets and direct ocean views
- Large primary bath with dual sinks, large walk in shower and stand alone tub
- Secondary bedrooms with views to North and downtown skyline
- Laundry Room with sink
- Premium kitchen with Ital-kraft cabinetry, Quartz countertops and premium appliances
- clear railings for unobstructed views
- Spacious living/dining combo area

3 bedroom / 3.5 bathroom

2,220sf (12th-42nd floors)



05

3 B
3 1/2 B



- 3 bedroom / 3.5 bathroom
- 2,220sf
- Semi private elevator directly into residence
- Ocean view balcony
- Oversized primary bedroom with dual closets and direct ocean views
- Large primary bath with dual sinks, large walk in shower and stand alone tub
- Secondary bedrooms with views to North and downtown skyline
- Laundry Room with sink
- Premium kitchen with Ital-kraft cabinetry, Quartz countertops and premium appliances
- clear railings for unobstructed views
- Spacious living/dining combo area