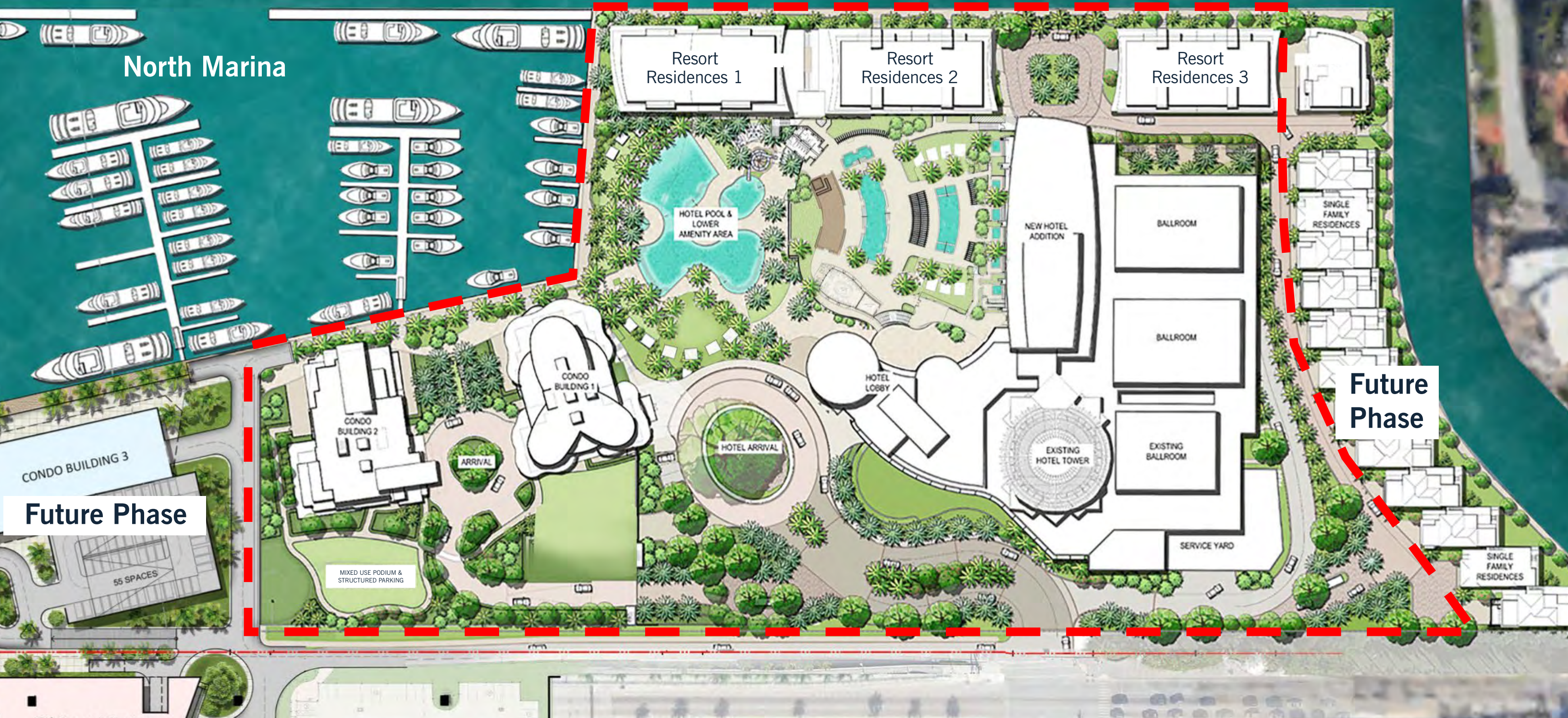


PIER SIXTY-SIX

SITE PLAN



Pier Sixty-Six Phase 1







RESIDENCES

PIER SIXTY-SIX

Own the Waterfront.

Introducing a collection of private residences that offer the most priceless views in South Florida – The Residences at Pier Sixty-Six. A rarified offering of luxury condominiums, the two- to four-bedroom homes feature expansive private terraces, overlooking Fort Lauderdale legendary marina and waterways. The new Residences are nestled within the celebrated Pier Sixty-Six property. A storied South Florida icon for more than 50 years, the 32-acre resort and marina are being completely reimaged by Tavistock Group as a luxury, waterfront destination.

The inaugural residential offering includes 62 private residences offering unparalleled waterfront living in the heart of Fort Lauderdale within three striking addresses. Exclusive, yet expansive, owners enjoy privileged access to the resort as well as immediate access to the marina and accompanying promenade featuring restaurants, shops, and ample dockage space for superyacht vessels.

This is a one-of-a-kind opportunity to own at the gateway to the Venice of America.

THE RESIDENCES

The Condominium Residences

The Residences at Pier Sixty-Six offer two distinct living opportunities: the Condominiums, comprised of 31 units with magnificent water views; and the Resort Residences, two intimate waterfront buildings offering a total of 31 unique, stunning homes.

Airy and elevated, the homes epitomize indoor/outdoor living with expansive wrap-around terraces, each featuring a signature private plunge pool, that frame panoramic views of the city skyline, Intracoastal Waterway, and Atlantic Ocean

Secured residential lobby with direct elevator access into each home

Private and intimate, the 11-story building features four, designer-ready, corner residences per floor

Lofty 10-foot ceilings throughout with direct water views from every room

Open, spacious, chef-inspired kitchens featuring custom Italian cabinetry paired with quartz countertops and best-in-class, integrated appliance suite including:

- Sub-Zero refrigerator, freezer, and wine storage
- Wolf gas cooktop and oven
- Asko dishwasher
- Undermounted stainless steel sinks.

Spa-inspired bathrooms:

- Custom Italian wooden cabinetry
- Hand-selected polished chrome fixtures and fittings by Grohe
- Primary bathrooms feature custom rain showers with integrated LED lighting and smart toilets by Kohler.

RESIDENCES

PIER SIXTY-SIX

The Resort Residences

Bespoke and exclusive, the Resort Residences offer individually designed floorplans with distinctive architectural features such as double-height living rooms and private garden retreats. This limited collection of 31 designer-ready homes is set within two four-story luxury waterfront residential buildings

Striking two- to four-bedroom residences ranging from 1,645 to over 3,800 square feet

Private residential lobby entryways and semi-private elevators

Open, spacious, chef-inspired kitchens featuring custom Italian cabinetry paired with quartz countertops and best-in-class, integrated appliance suite including:

- Sub-Zero refrigerator, freezer, and wine storage
- Wolf Induction cooktop and oven
- Asko dishwasher
- Undermounted stainless steel sinks

Spa-inspired bathrooms:

- Custom Italian wooden cabinetry
- Hand-selected polished chrome fixtures and fittings by Grohe
- Primary bathrooms feature custom rain showers with integrated LED lighting and smart toilets by Kohler

**Amenities and features vary by building and by plan.
Please ask your sales associate for specific details.*

THE RESORT & MARINA

Owned and developed by Tavistock Group – the international private firm behind Albany, The Bahamas, St. Regis Atlanta, and the visionary community of Lake Nona in Orlando, Florida

32-acre, lushly landscaped resort framed by the legendary marina with exceptional amenities

Superyacht marina featuring 5,000 linear feet of dockage with 164 slips, welcoming vessels up to 400 feet in length

Marina promenade featuring curated retail and culinary destinations

Thoughtful master plan design ensures cinematic marina and waterfront views from indoor and outdoor amenities and private residences

Concierge will oversee a range of à la carte services and opportunities, including VIP restaurant reservations, marina arrangements, and in-residence services including catering, entertaining, and housekeeping

RESIDENCES

PIER SIXTY-SIX

THE AMENITIES

Exclusive facilities at Pier Sixty-Six include:

- The Club Room – for entertaining and socializing
- Private poolside café and Lounge
- Marina-front VIP pool with private cabanas and chaise lounge service
- Wellness lounge, including a private fitness room and water grotto
- A rotating selection of social and marina VIP events

Outdoor recreation – dynamic, multi-level, marina-front pool deck with tropical landscaping, cabana seating, art installations, food, beverage, and entertainment offerings:

- VIP pool – with private cabanas and chaise lounge service
- Adult pool – a refreshing water oasis with an outdoor dining pavilion overlooking the marina
- Resort pool – with a three-story slide and fountain features and a dedicated café, bar, and kids club

Dining – distinct social, dining, and lounge destinations crafted and curated by Tavistock – offering priority reservations and charging privileges for owners.

Options include:

- Waterfront restaurant, the signature dining destination at Pier Sixty-Six
- Marina restaurant offering indoor and outdoor dining on the promenade
- Lobby bar and terrace lounge
- Poolside café, cabana lounge, and outdoor dining pavilion
- Pier Top lounge – Fort Lauderdale’s most recognizable, rotating landmark will re-emerge as a sophisticated lounge offering unbeatable sunset views and VIP tables for owners

Wellness and spa – offerings that embrace the restorative marina-front setting:

- Lavish spa – priority access for owners
- Fitness center – state-of-the-art cardio and conditioning equipment
- Yoga and Pilates studio – ideal for personal training

Water Activities – options for all ages:

- Immediate access to marina and promenade
- Slips for boating drop-offs
- Marine-focused kids club



RESIDENCES

pier SIXTY-SIX

RESORT RESIDENCES

C

3 BEDROOMS
3 BATHROOMS

Interior
1,645 SQFT
152.8 SM

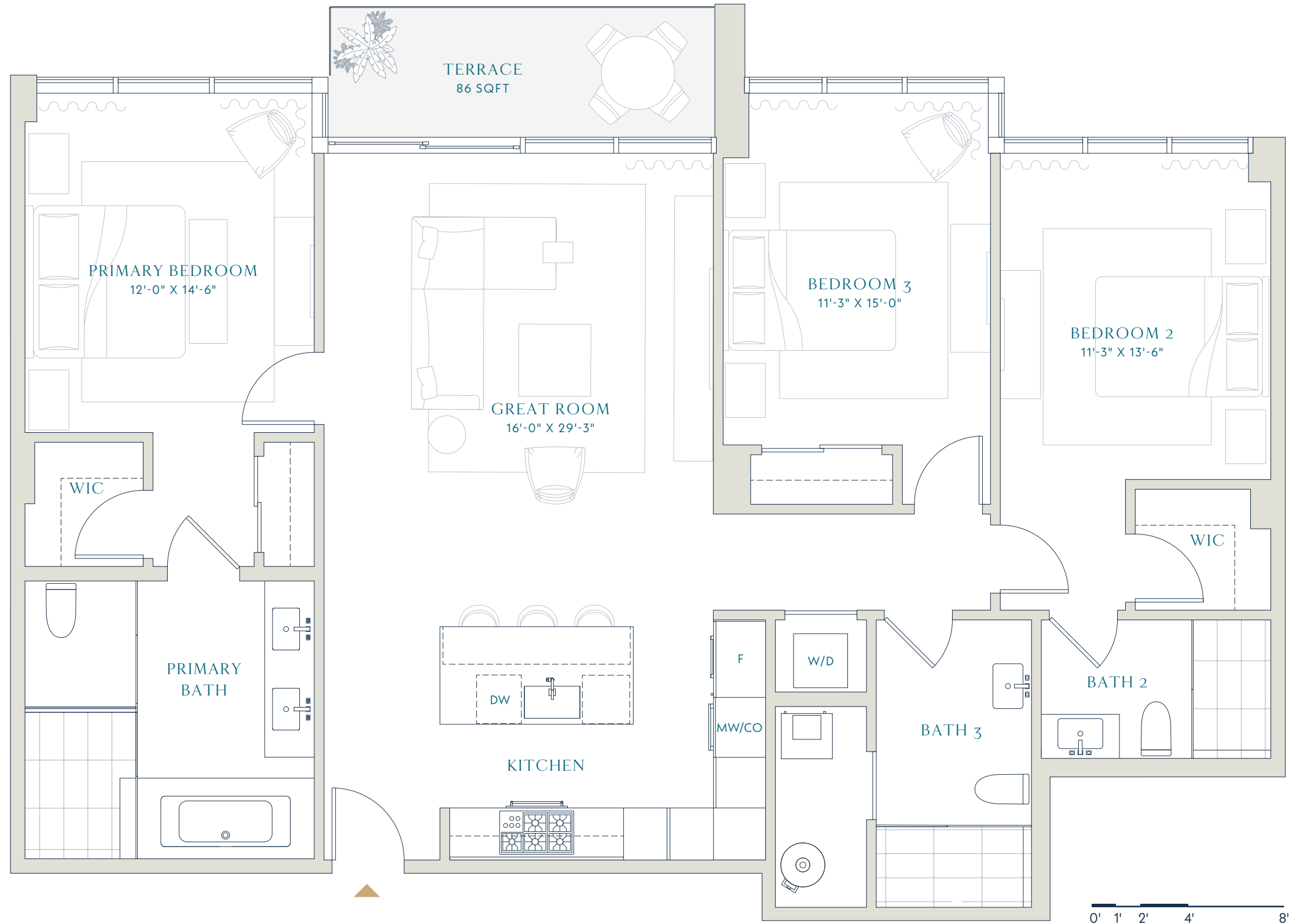
Terrace
86 SQFT
8.0 SM

Total
1,731 SQFT
160.8 SM



pier SIXTY-SIX

WATER VIEW



RESIDENCES

pier SIXTY-SIX

RESORT RESIDENCES

D

2 BEDROOMS
FAMILY ROOM
3 BATHROOMS

Interior
1,738 SQFT
161.5 SM

Terrace
500 SQFT
46.5 SM

Total
2,238 SQFT
207.9 SM

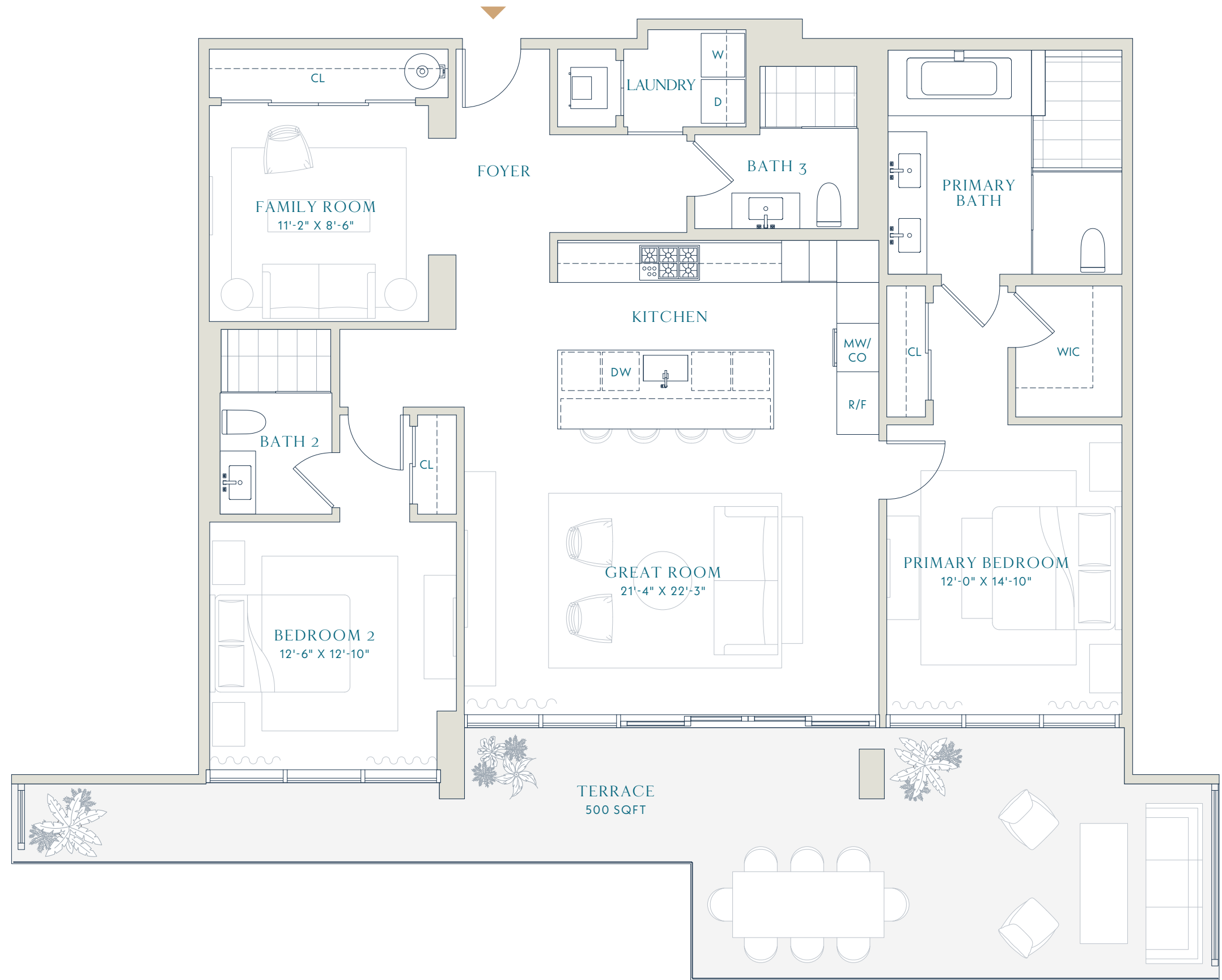


RESORT RESIDENCE 1



RESORT RESIDENCE 2

pier SIXTY-SIX



RESIDENCES

pier SIXTY-SIX

RESORT RESIDENCES

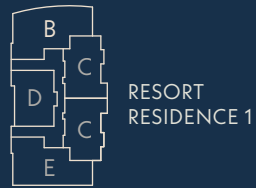
E ALT

3 BEDROOMS
3.5 BATHROOMS

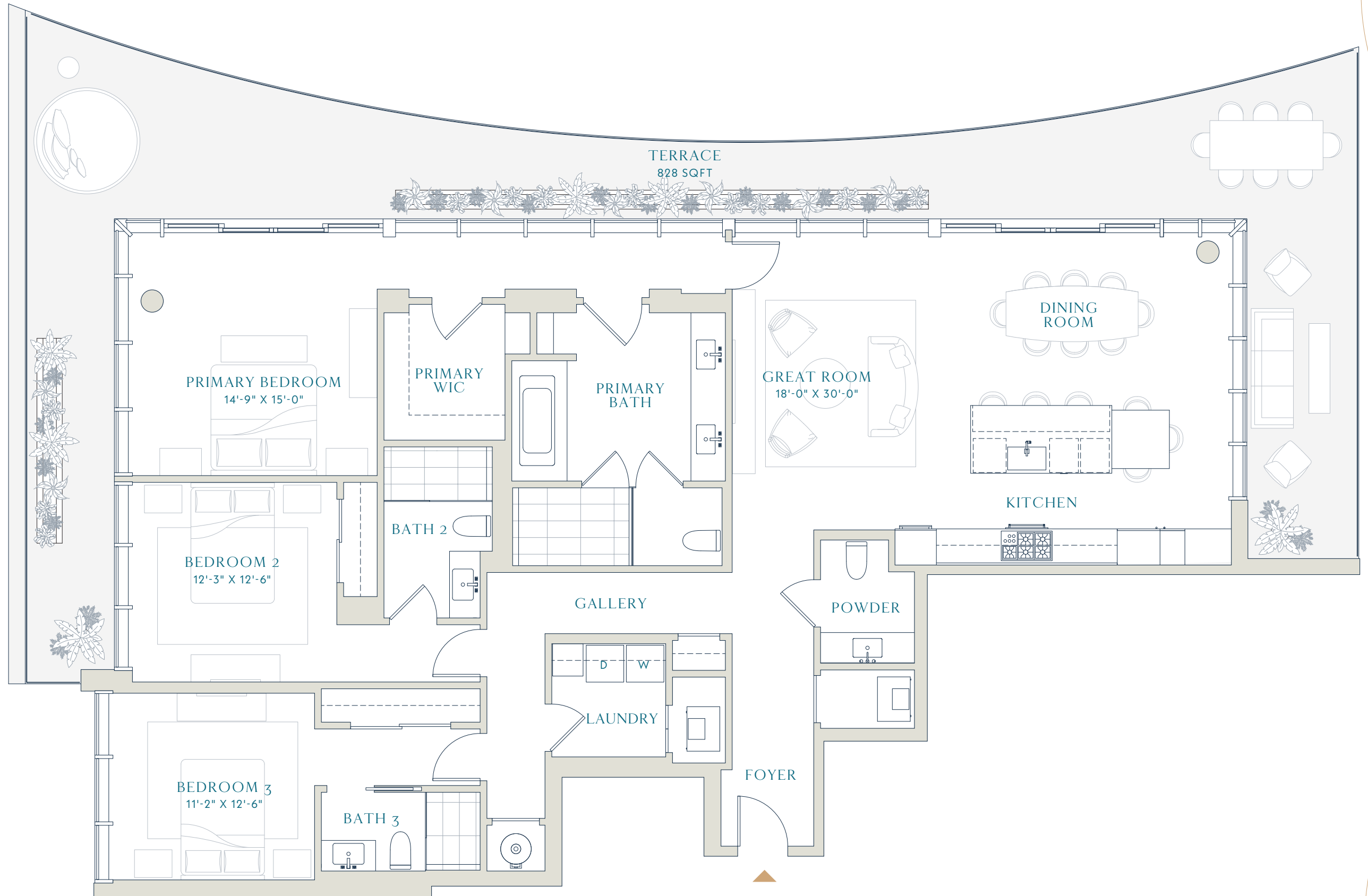
Interior
2,205 SQFT
204.9 SM

Terrace
828 SQFT
77.0 SM

Total
3,033 SQFT
281.8 SM



pier SIXTY-SIX





RESIDENCES

pier SIXTY-SIX

CONDO RESIDENCES

A

3 BEDROOMS
3.5 BATHROOMS

Interior
2,878 SQFT
267.4 SM

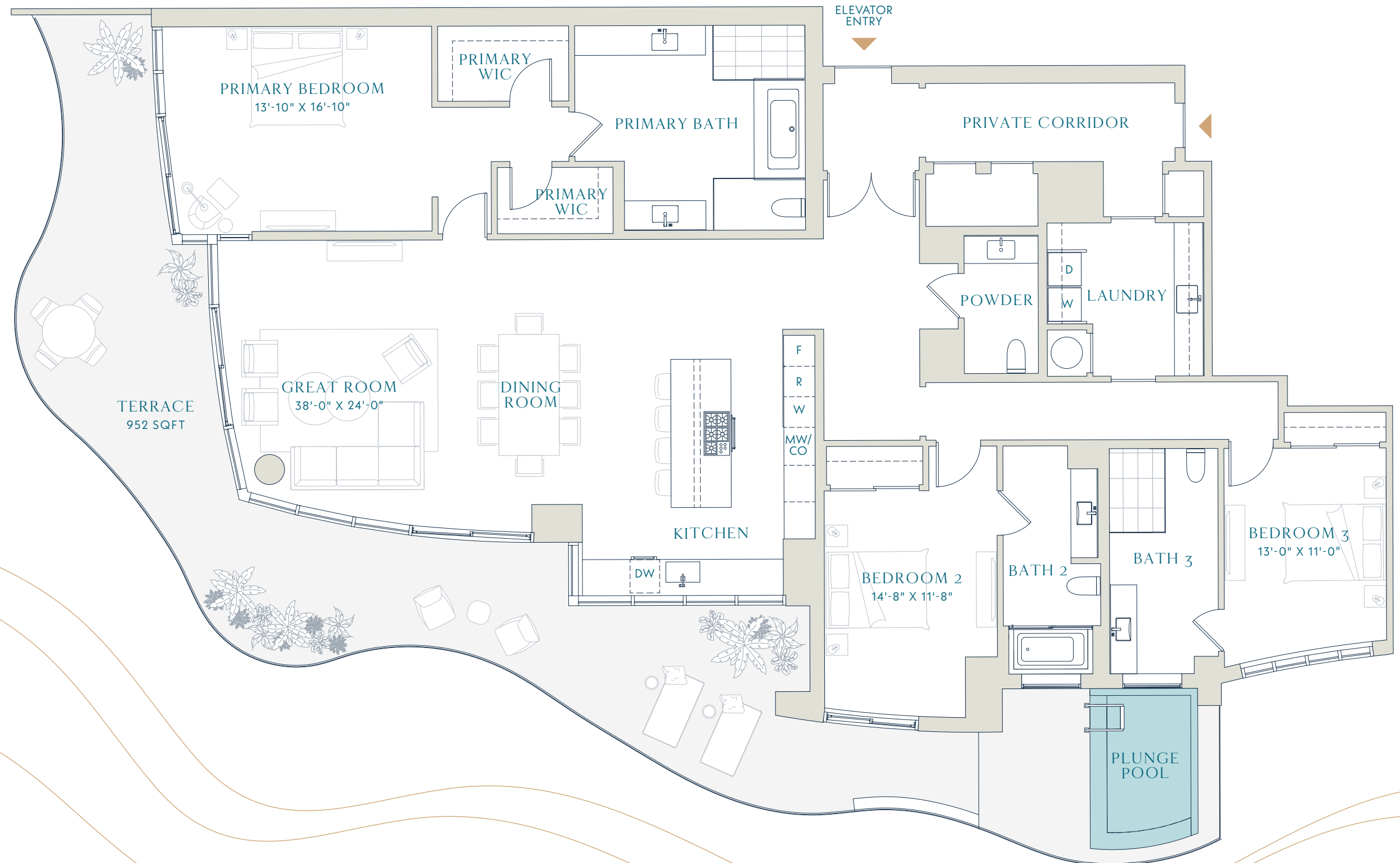
Terrace
952 SQFT
88.4 SM

Total
3,830 SQFT
355.8 SM



CONDO RESIDENCES

pier SIXTY-SIX



WATER VIEW



RESIDENCES

pier SIXTY-SIX

CONDO RESIDENCES

B

3 BEDROOMS
3.5 BATHROOMS

Interior
2,878 SQFT
267.4 SM

Terrace
980 SQFT
91 SM

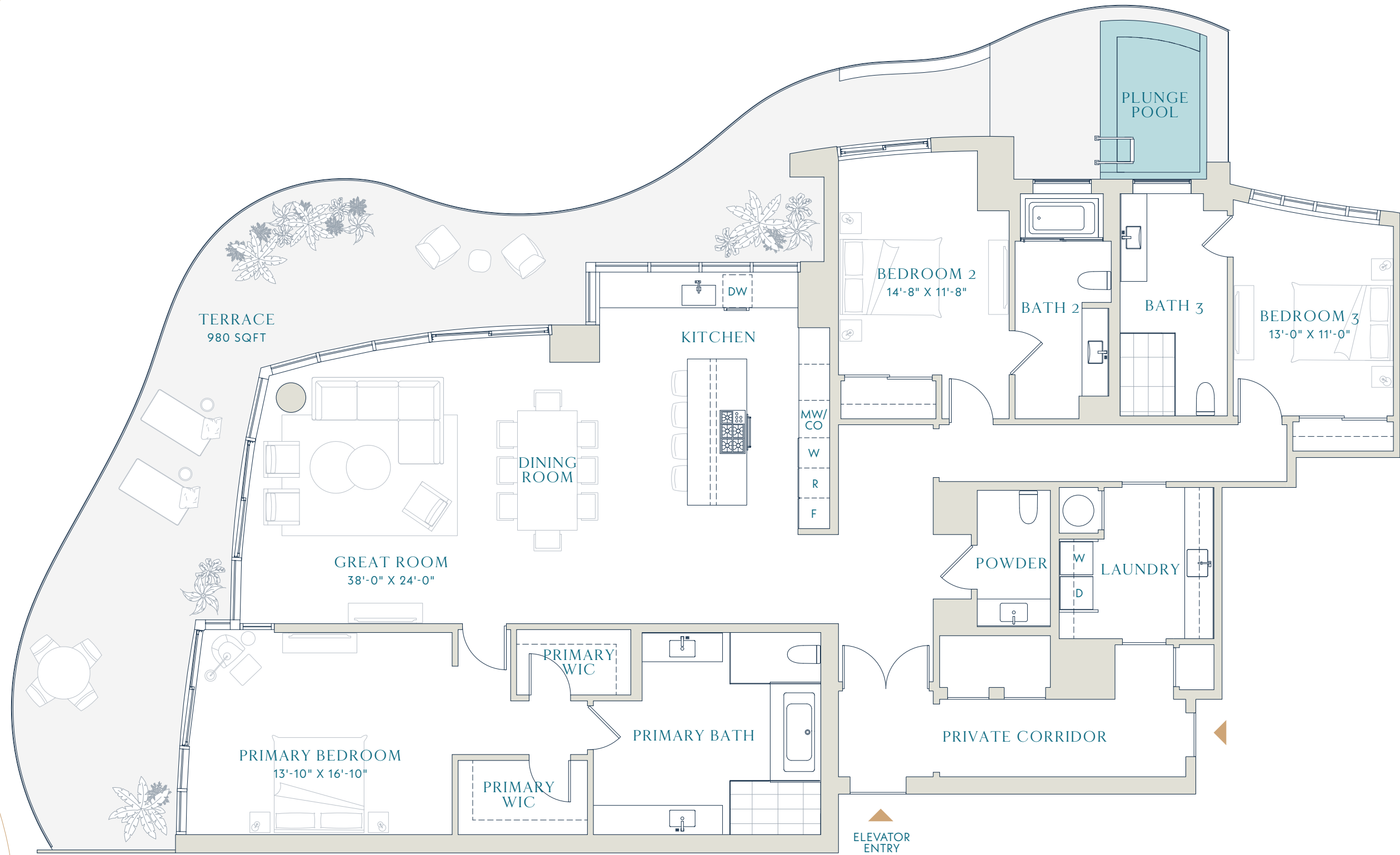
Total
3,858 SQFT
358.4 SM



CONDO RESIDENCES

pier SIXTY-SIX

WATER VIEW



0' 3' 6' 12'

RESIDENCES

pier SIXTY-SIX

CONDO RESIDENCES

C

3 BEDROOMS
3.5 BATHROOMS

Interior
2,718 SQFT
252.5 SM

Terrace
917 SQFT
85.2 SM

Total
3,635 SQFT
337.7 SM



CONDO RESIDENCES

pier SIXTY-SIX



RESIDENCES

PIER SIXTY-SIX

CONDO RESIDENCES

D

3 BEDROOMS
3.5 BATHROOMS

Interior
2,718 SQFT
252.5 SM

Terrace
862 SQFT
80.1 SM

Total
3,580 SQFT
332.6 SM



CONDO RESIDENCES

PIER SIXTY-SIX

WATER VIEW



0' 3' 6' 12'





DEPOSIT STRUCTURE & TIMELINE

Deposit Structure

Period	Amount
Reservation	\$100,000.00
Contract Signing <i>Expected Early 2023</i>	20% of Purchase Price
60-Days After Contract Signing	20%
Closing	60%

Construction Timeline

Phase 1 Construction Start: Fall 2021

Resort Residences | Villas 1 & 2

31 units ranging from 1,645 - 3,800 Square Feet

Construction Top Off - December 2022

Construction Completion - Early 2024

Condo 1

31 units ranging from 2,700 - 2,800 Square Feet

Construction Top Off - November 2022

Construction Completion - Early 2024

Condo 2

31 units ranging from 2,700 - 2,800 Square Feet

Construction Top Off - Winter 2023

Construction Completion - Fall 2024

All stated dates are approximate.

CONTACT:
STEVE SAMUELS
OCEANFRONT REALTY
305-494-1767