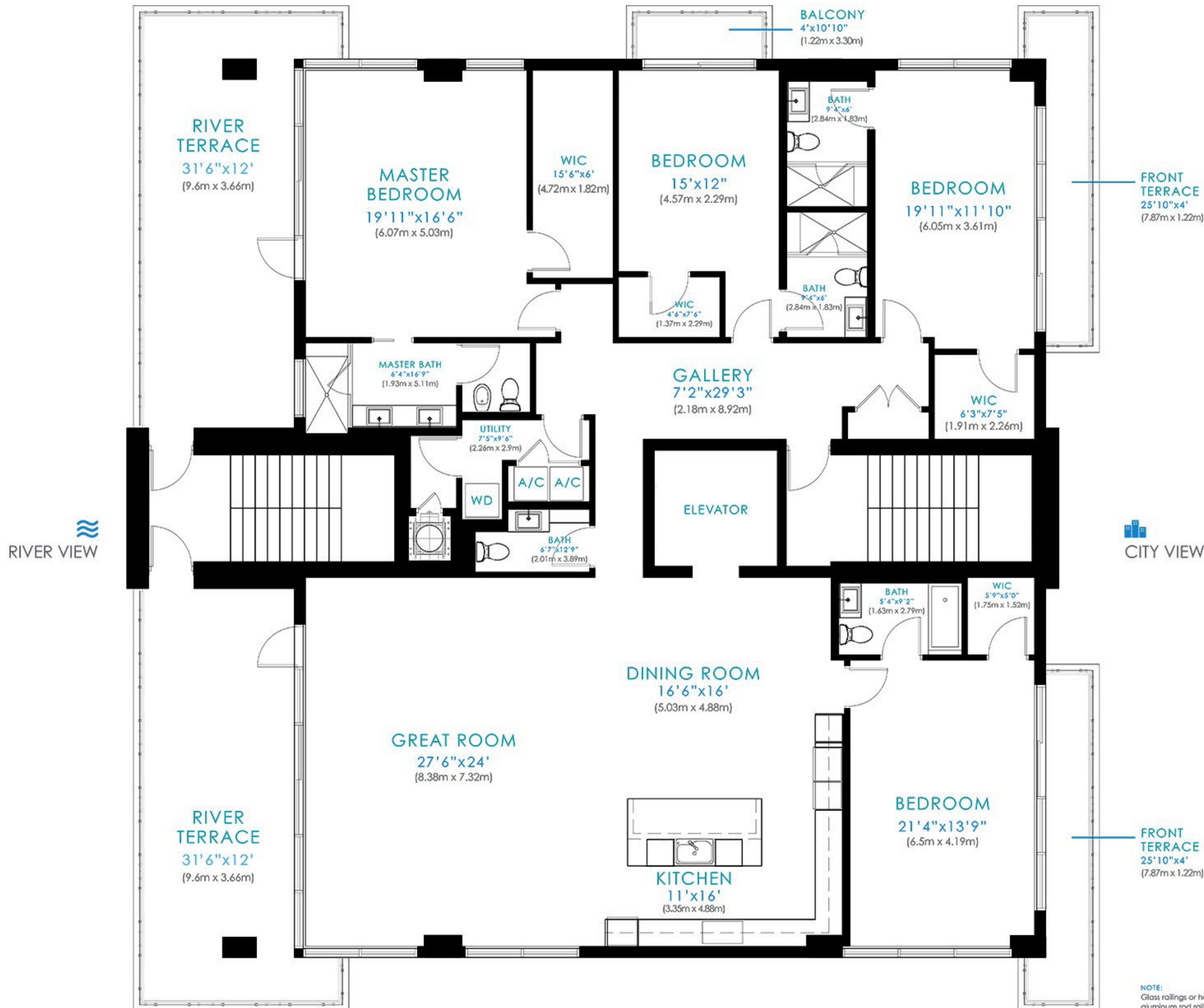


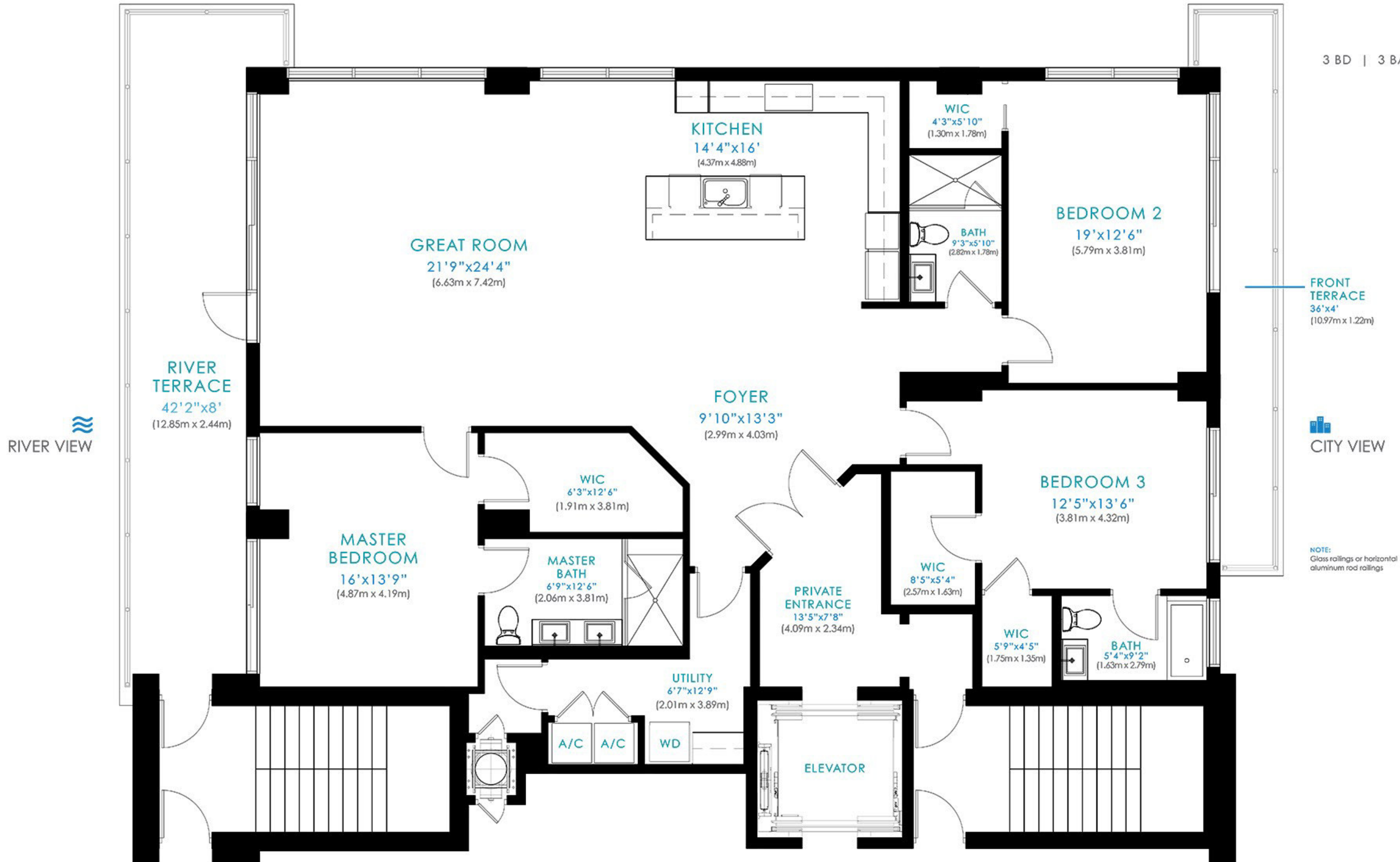
## CAPRI

4 BD | 4.5 BA | 4,505 SF (418.5 M<sup>2</sup>)



IBIZA

3 BD | 3 BA | 3,038 SF (282.2 M<sup>2</sup>)



PORTOFINO

4 BD | 3.5 BA | 3,977 SF (369.5 M<sup>2</sup>)



RIVER VIEW

CITY VIEW

FRONT TERRACE  
51'x4'  
(15.54m x 1.22m)

NOTE:  
Glass railings or horizontal  
aluminum rod railings

