



LEGACY

HOTEL & RESIDENCES



Secure your legacy



THIS IS WHERE EVENTS
HAPPEN IN THE SKY, YOUR
SWIM IS IN THE AIR, AND
HEALTH IS YOUR NEW
WEALTH.

RESIDENCES **287**
241 HOTEL ROOMS

Legacy is both luxury hotel and residential tower featuring 287 branded residences sitting above a 241 room hotel.

Just a short distance from Brickell, South Beach, Wynwood, Design District and Little Havana, Miami Worldcenter truly puts you at the center of it all.

Legacy Hotel will be one of downtown Miami's only luxury hotels. Within a master plan that includes a convention center, entertainment, restaurants and high-end retail, all helping to drive reservation demand year round.



DISCOVER DOWNTOWN MIAMI

● MUSEUM PARK

Breathtaking views of the Biscayne Bay and the glittering Miami skyline around, it is a gorgeous undulating green expanse of 30 acres. The park is home to the Phillip and Patricia Frost Museum of Science and its waterfront treasure - Perez Art Museum Miami.

● AMERICAN AIRLINES ARENA

The 20,000-seat American Airlines Arena, home to the NBA Miami Heat, is nestled on the majestic Biscayne Bay. Besides its sports accommodation, American Airlines Arena hosts world-class concerts and shows, from Adele to Jennifer Lopez.

● ADRIENNE ARSHT CENTER

The Adrienne Arsht Center, designed by world-renowned architect Cesar Pelli, is one of the most important performing arts venues, with two major single-purpose halls created to present the finest in classical and popular entertainment, from 'Hamilton' to 'Don Quixote'.

● MIAMI WORLDCENTER

Miami Worldcenter is stated to be a magnetic destination for tourists and business visitors in the heart of Downtown. This is the biggest mixed-use development in the U.S. after New York's Hudson Yards.



MIAMI WORLD CENTER

WORLD PROMENADE

Regional Fashion Retailers Anchored by
Regional and Local High-end Restaurants

7TH ST. PROMENADE

Daily Necessities: Hair Salon, Nail Bar,
Coffee Shops, Ice Cream Shops, Banks,
and Corner Restaurant

WORLD SQUARE

The Heart of Miami Worldcenter used
for Community Gatherings, Open
Markets and Concerts

ENTERTAINMENT HUB

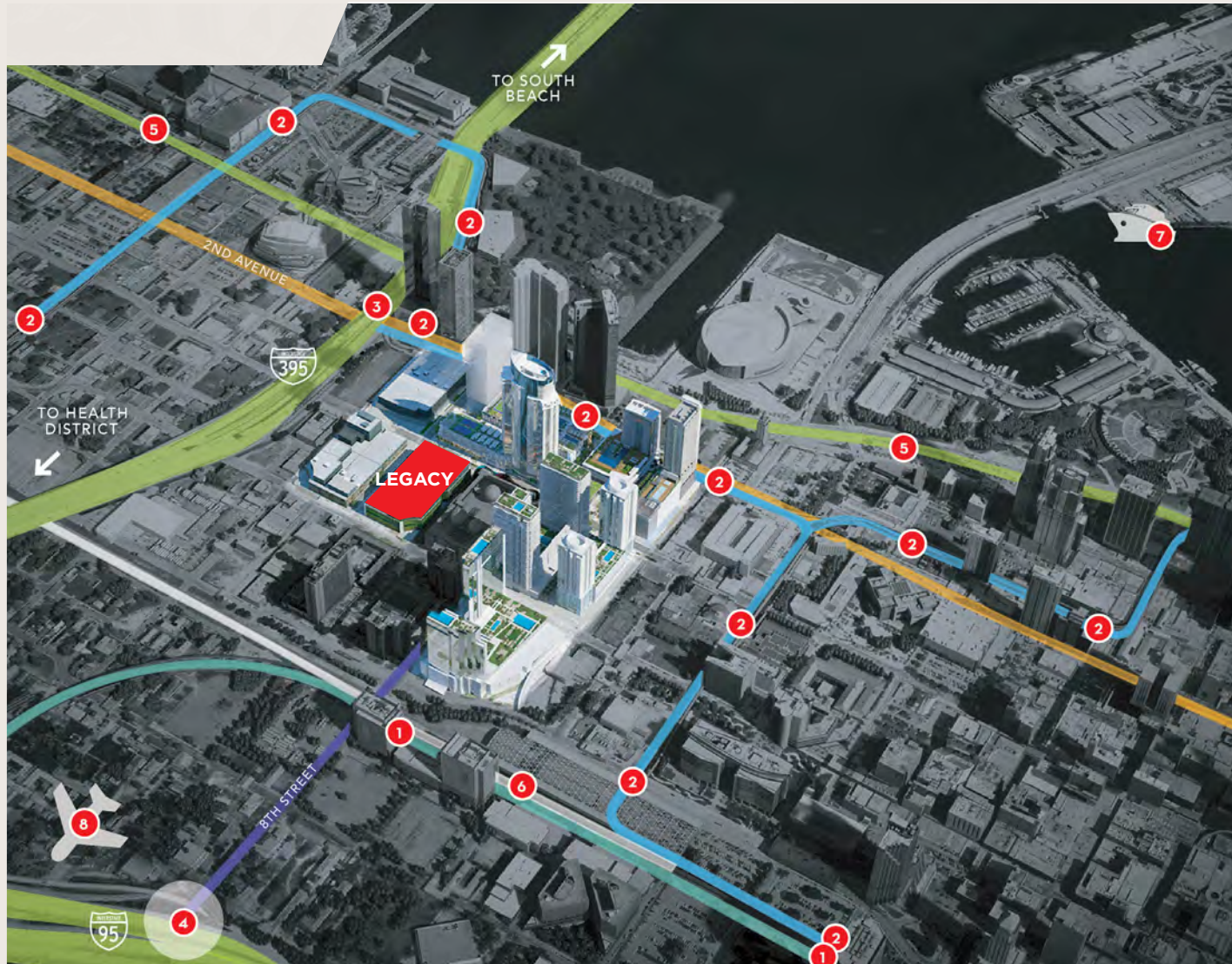
90,000 sq. ft. World Class Entertainment
including a Food Hall, Experience Oriented
Activities and a Citizen M Hotel

MARRIOTT MARQUIS HOTEL & CONVENTION CENTER

600,000 sq. ft. of Convention Space
1,800 Luxury Hotel Rooms



ACCESS TO EVERYWHERE



1 METRORAIL LINE + STATION
• 2.5 million riders annually

2 METROMOVER + STATION
• 10 million riders annually
• 3 stops directly at MWC site

3 I-395 + 2ND AVENUE
• 43 million vehicles annually
• 117,500 vehicles daily

4 I-95 + 8TH STREET
• 55 million vehicles annually
• 152,500 vehicles daily

5 BISCAYNE BOULEVARD
• 15 million vehicles annually

6 ALL ABOARD FLORIDA - BRIGHTLINE
• 10 million projected visitors

7 PORT OF MIAMI
• 5 million cruise passengers annually
• #1 cruise port in the world

8 MIAMI INTERNATIONAL AIRPORT
• 5 miles west from MWC site
• 45 millions passengers annually

LEGACY PROVIDES UNMATCHED ACCESSIBILITY

150 MILLION TRANSIT TRIPS

- VIRGIN MIAMICENTRAL STATION - MIAMI TO ORLANDO IN 3 HOURS
- METRORAIL AND METROMOVER STATIONS
- MINUTES FROM THE MIAMI INTERNATIONAL AIRPORT
- THOUSANDS OF NEW PARKING SPACES GIVING VISITORS TO NEARBY ATTRACTIONS A CONVENIENT PLACE TO PARK

MIAMI

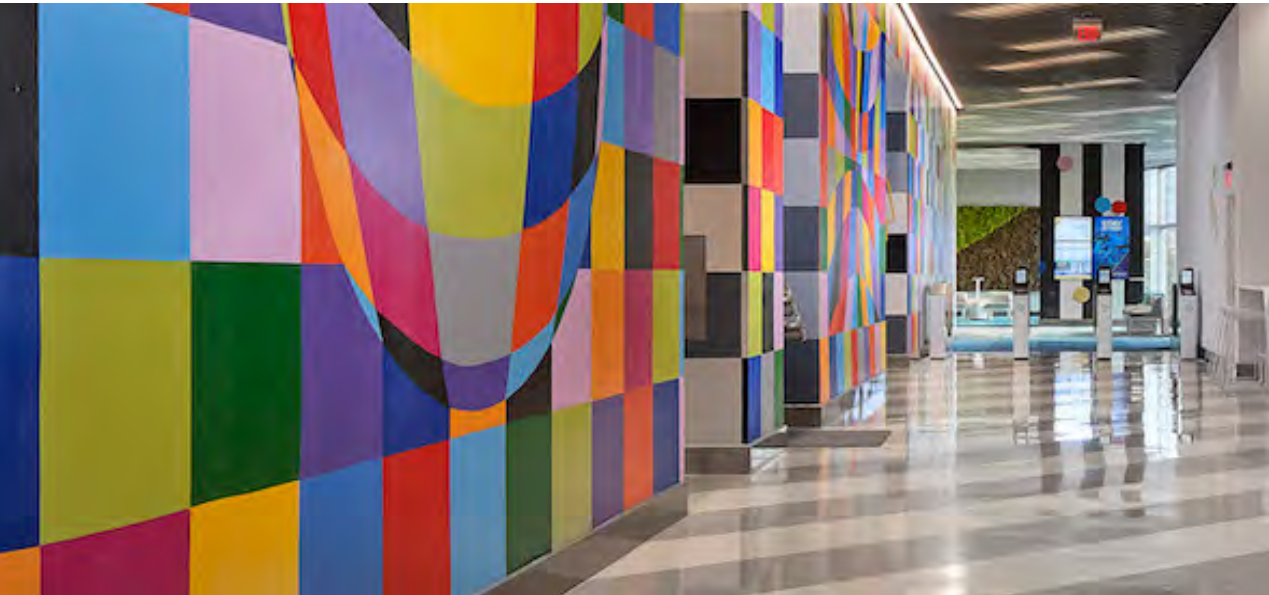
AVENTURA
FUTURE EXPANSION

FT LAUDERDALE

BOCA RATON
FUTURE EXPANSION

WEST PALM BEACH

ORLANDO
FUTURE EXPANSION



FOUR REASONS TO *OWN* HERE

INTERNATIONAL
BUSINESS LOUNGE



ROOFTOP
ATRIUM
& EVENT SPACE



1 2 3 4
X

CENTER
FOR HEALTH
& PERFORMANCE



MICRO*LUXE*
RESIDENCES



FOUR REASONS TO *STAY* HERE

ARTIST CONCEPTUAL RENDERINGS. DEVELOPER MAY CHANGE WITHOUT NOTICE.



X1

ROOFTOP ATRIUM & EVENT SPACE

The image is a conceptual rendering of a high-end atrium. It features a large, curved glass roof with a grid of dark metal beams. Numerous long, thin, teardrop-shaped light fixtures hang from the ceiling. The space is filled with several tall palm trees. In the center, there is a long, dark wooden bar with a backlit display of bottles. Surrounding the bar are several lounge areas with light-colored sofas and armchairs, some with blue cushions. The floor is made of light-colored wood. Large windows on the sides and back offer a panoramic view of a city skyline at night, with lights from buildings and a bridge visible. The overall atmosphere is sophisticated and modern.

A ONE-OF-A-KIND SOCIAL DESTINATION AND EVENT SPACE

The Atrium is an intimate place for residents and the ultimate public/private space in Miami. Friends, family and co-workers will host their most prestigious events in this city here. The Atrium is Miami's first fully enclosed glass rooftop that gives event-planners the perfect space to plan with its soaring views of downtown, cantilevered glass pool hanging off the edge of the space, air conditioning and of course protection from any rain. No need for contingencies here. The rest of Miami will immerse itself into our SkyBar with endless sunsets, cocktails and lite bites as you converse with acquaintances. This is the first Atrium of its kind in Miami.



SINGAPORE-STYLE GLASS
BOTTOMED POOL THAT IS
CANTILEVERED FROM THE
ROOFTOP ATRIUM

X2

INTERNATIONAL BUSINESS LOUNGE



The International Business Lounge is a timeless and tailored setting for intimate social and business experiences. A place guests can relax over the perfect cup of coffee and talk about important things face to face with no distractions. A rare delight in a place designed where deals to get done.

X3

CENTER FOR HEALTH & PERFORMANCE



Our VIP Health and Performance Center is designed to diagnose your health. Using technology and expertise, the future of understanding the things that matter most live here. Like never before you will have unparalleled access to the best practitioners and technology in the areas of health, wellness, beauty and longevity. From herbal baristas to IV solutions and hormone balancing, the future is now. Legacy is where health is the new wealth.

COMPREHENSIVE PROGRAMING
DESIGNED FOR PREVENTION &
PERFORMANCE

MEDICINE

- PRIMARY CARE - WELLNESS MEDICINE
- AESTHETIC & ELECTIVE SURGERIES
- REGENERATIVE MEDICINE
- ORTHOPEDIC/SPORTS MEDICINE

DIAGNOSTICS

- ADVANCED DIAGNOSTIC TESTING AND BENCHMARKING
- DIAGNOSTIC IMAGING
- EXECUTIVE DIAGNOSTIC ANNUALS WITH HEALTH PASSPORT

WELLNESS

- CUSTOMIZED LONGEVITY PROGRAMS
- COACHING/MONITORING/COUNSELING
- ADVANCED FITNESS TRAINING
- HORMONE BALANCING
- THERMAL THERAPEUTIC TREATMENTS
- ACUPUNCTURE
- HERBAL BARISTA BAR
- IV NUTRIENT STATIONS

X4

MICROLUXE™ RESIDENCE DESIGN

Legacy Hotel & Residences will exist at the confluence of elegance and functionality. State-of-the-art digital resources and ergonomic integration will be woven into living spaces that marry a refined quality of life with commercial practicality and ease of ownership. Every innovation is intended to help guests simplify, streamline, and personalize their stay while enhancing our buyer experience as well. Developing a technology-driven approach to real-time communication and connectivity for both guests and owners. Everyone will be just a click away from a reservation, concierge, check-in arrival and much more. Legacy is the first high-end, high-touch hotel and residence experience that incorporates a holistic lifestyle and guest experience that energizes the mind.





EVERYTHING
HAS ITS PLACE

MICROLUXE™ FEATURES

- FULLY FURNISHED RESIDENCES
- CUSTOM KITCHEN AND BATH CABINETRY WITH STONE FINISHES
- BOSCH (OR COMPARABLE) ELECTRIC STOVETOP
- BOSCH (OR COMPARABLE) REFRIGERATOR
- BOSCH (OR COMPARABLE) DISH WASHER
- BOSCH (OR COMPARABLE) MICROWAVE
- ELECTROLUX (OR COMPARABLE) STACKABLE WASHER AND DRYER
- FLOOR-TO-CEILING GLASS WINDOWS



CHANGING RESIDENTIAL HOSPITALITY FOREVER.

HOTEL AREAS (GROUND LEVEL AND PEDESTAL)

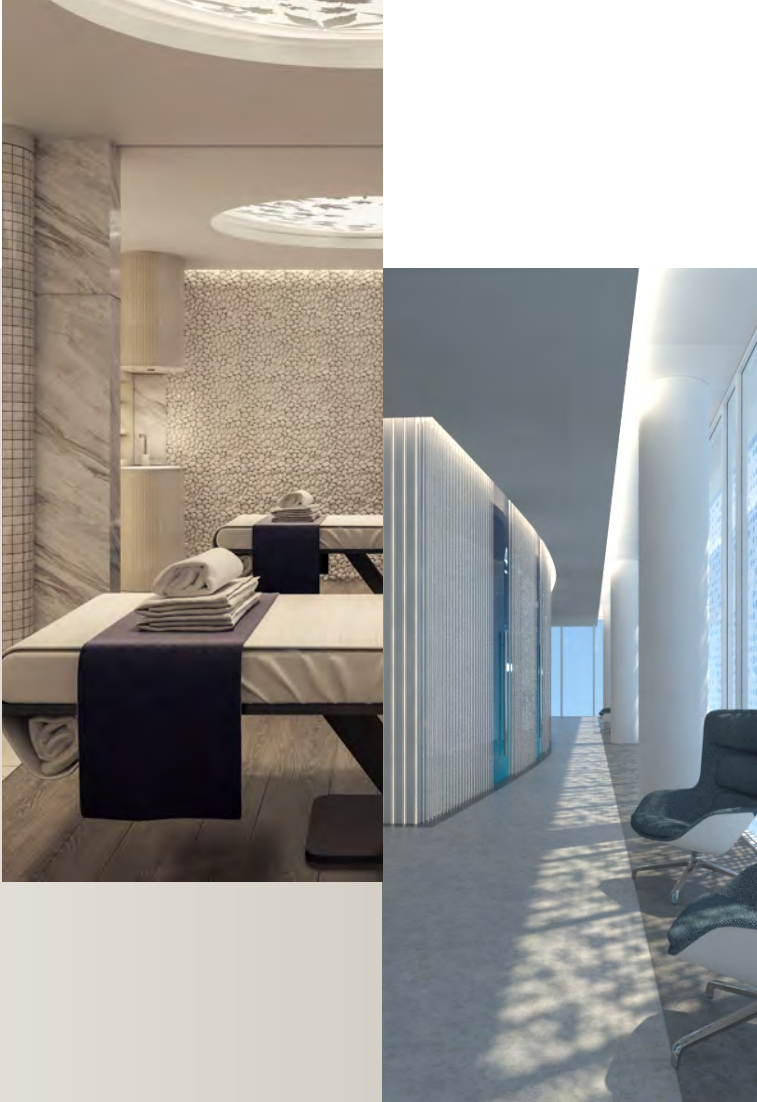
- SPECTACULAR 40 FT. HIGH LOBBY WITH GLASS ELEVATORS
- SIGNATURE INTERNATIONAL RESTAURANT
- FULL-SERVICE CAFÉ WITH LOCALLY SOURCED BAKED GOODS
- FIRST OF IT'S KIND INTERNATIONAL BUSINESS LOUNGE
- GRAND BALLROOM AND EVENT SPACES
- SHUL WITH KOSHER KITCHEN

ONE ACRE POOL DECK (9TH FLOOR)

- LARGEST DOWNTOWN HOTEL POOL DECK
- MULTIPLE WATER FEATURES AND FULL-SERVICE POOL
- SIGNATURE RESTAURANT SERVING ALL MEALS
- BAR AND LOUNGE
- LUXURIOUS DECK FURNITURE
- LUSH LANDSCAPING
- PLUSH CABANAS

ROOFTOP ATRIUM AND EVENT SPACE

- DECADENT LOUNGE WITH SEATING AMIDST GARDENS
- FULL SERVICE BAR FOR INDOOR AND OUTDOOR SEATING
- CANTILEVERED, INFINITY-EDGE, SINGAPORE INSPIRED POOL 500-FEET IN THE AIR
- ROOFTOP SUNDECK WITH ENDLESS DOWNTOWN VIEWS
- PLENTIFUL EVENT SPACE



CENTER FOR HEALTH AND PERFORMANCE®

- 50,000 SQ FT MEDICAL CLINIC WITH SUITES FOR HEALTH AND PERFORMANCE DIAGNOSTICS AND TECHNOLOGY
- VIP HEALTH CLUB WITH OPERATING ROOMS AND PRIVATE VIP ENTRANCE
- ADVANCED PERFORMANCE TESTING CENTER

WELLNESS (SOME COSTS MAY APPLY BASED ON USAGE AND PROCEDURES)

- MEDICAL FITNESS WITH PRESCRIPTION FOR HEALTH
- VITALITY SPA
- FITNESS STUDIOS
- SPORTS MEDICINE/PHYSICAL THERAPY
- EUROPEAN STYLED STEAM ROOM
- RELAXING SAUNA
- ALTITUDE TRAINING ROOM
- CRYOTHERAPY CHAMBERS
- JUICE/BEVERAGE BAR
- IV NUTRITION THERAPY

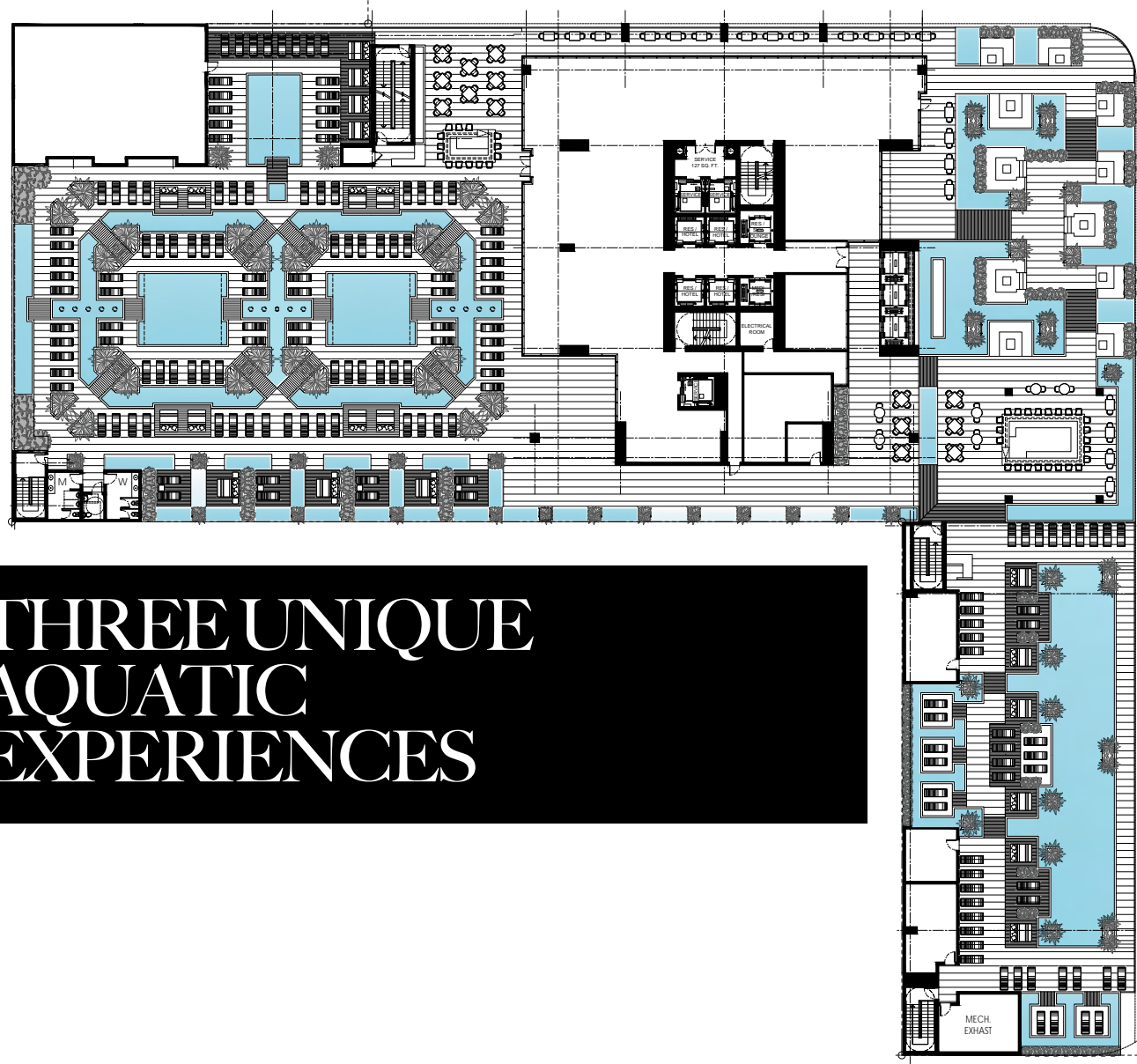
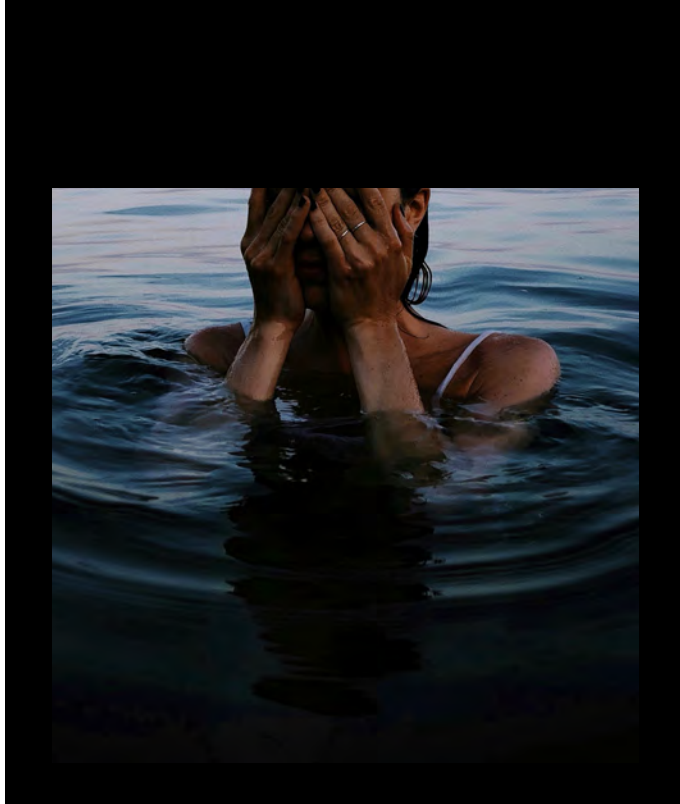
Legacy Hotel and Residences (942 NE 1st Avenue Condo) is situated above the Legacy Hotel and have unique access to certain amenities and features that may require fees to use. Please rely on the Prospectus and Condominium Documents presented to you for definitive information regarding all usage, access and benefits.

ARTIST CONCEPTUAL RENDERINGS. DEVELOPER MAY CHANGE WITHOUT NOTICE.



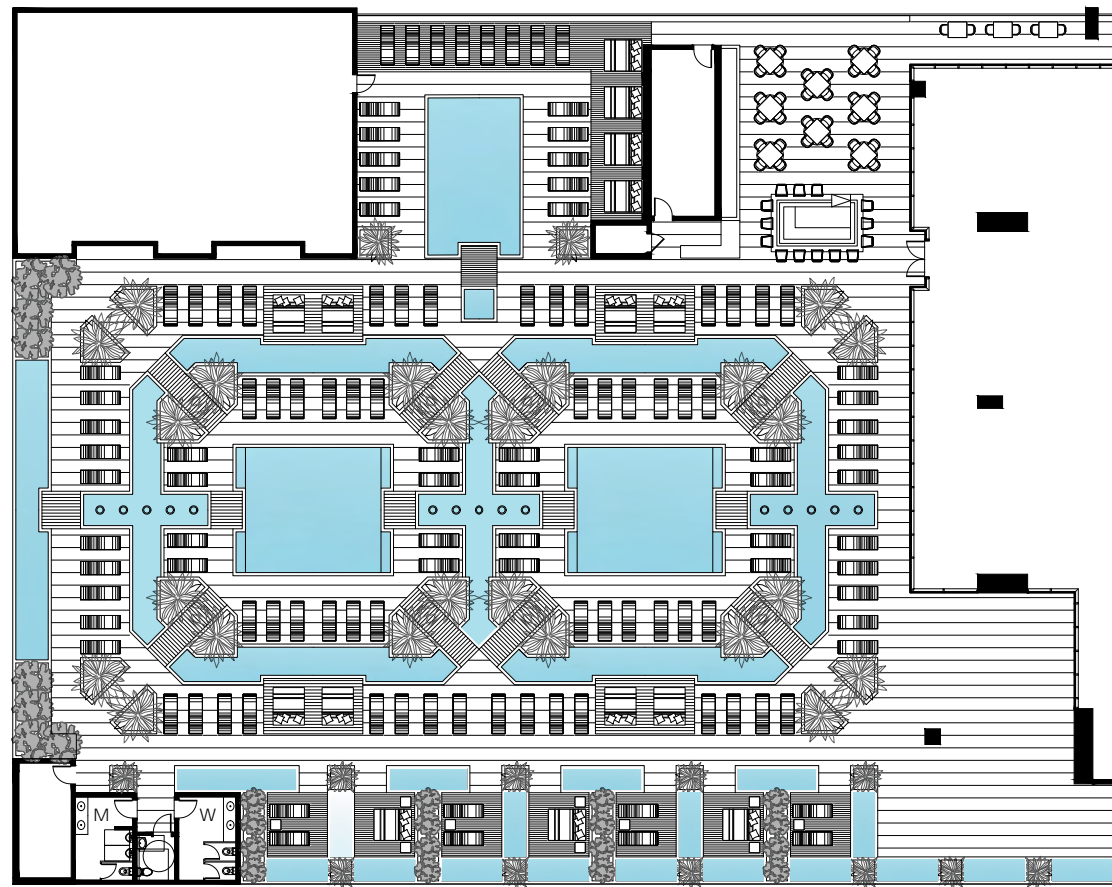
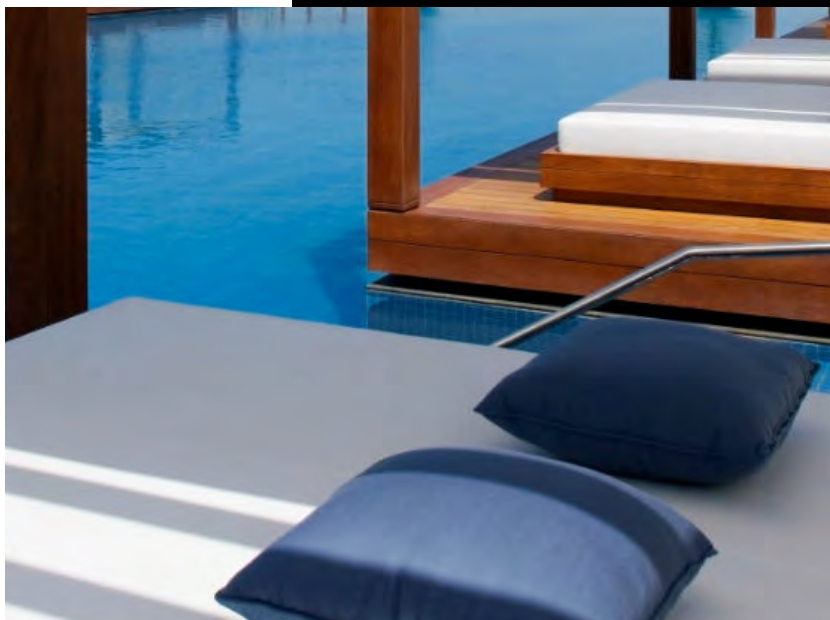
THE LEGACY EXPERIENCE

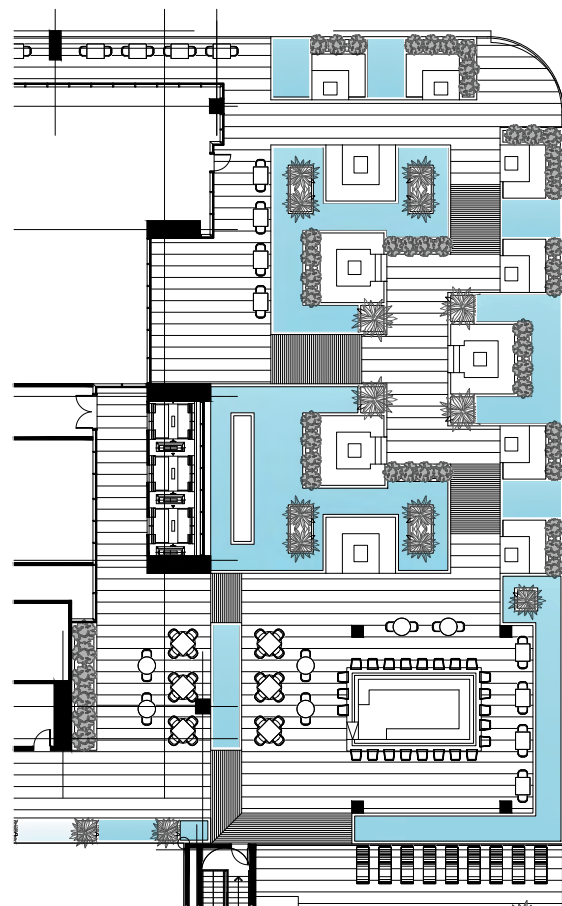
EXEMPLIFIED BY EXTRAORDINARY COMFORT WITH AN UNRIVALED
LEVEL OF SERVICE AND INNOVATION. LEGACY CAN BE A
MEMORABLE ESCAPE OR MEANINGFUL DESTINATION.



THREE UNIQUE AQUATIC EXPERIENCES

RESORT POOL

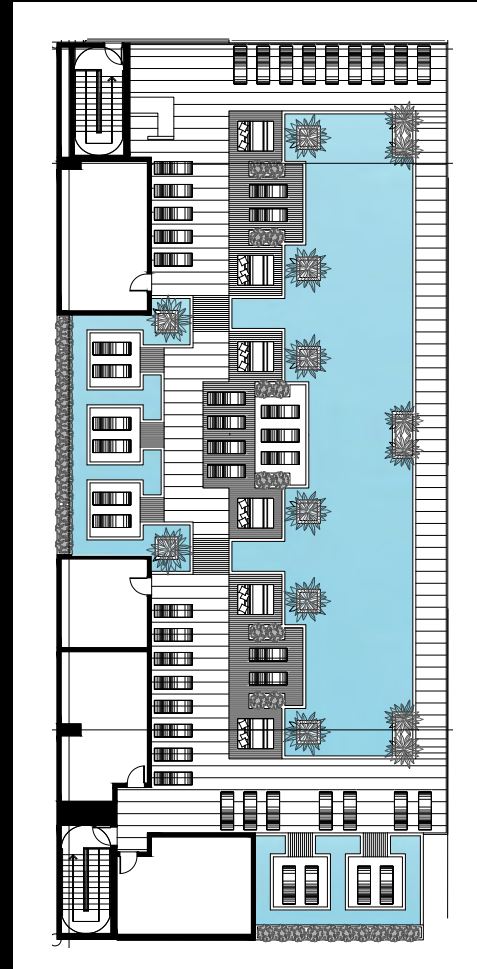




POOL GARDENS

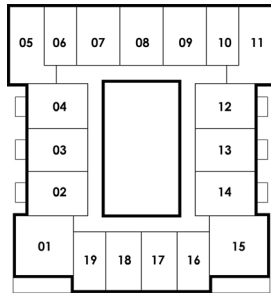


SANCTUARY POOL

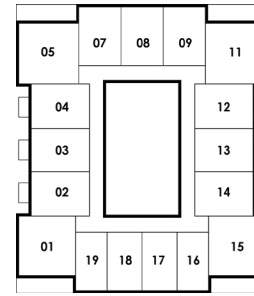


MICRO*LUXE*™

KEYPLANS & FLOORPLANS



KEYPLATE A
LEVELS: 28-31, 34-37

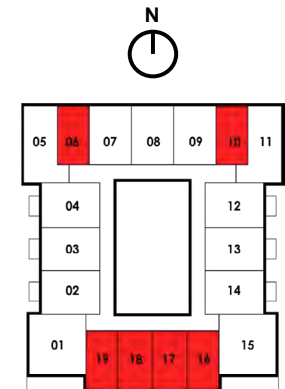
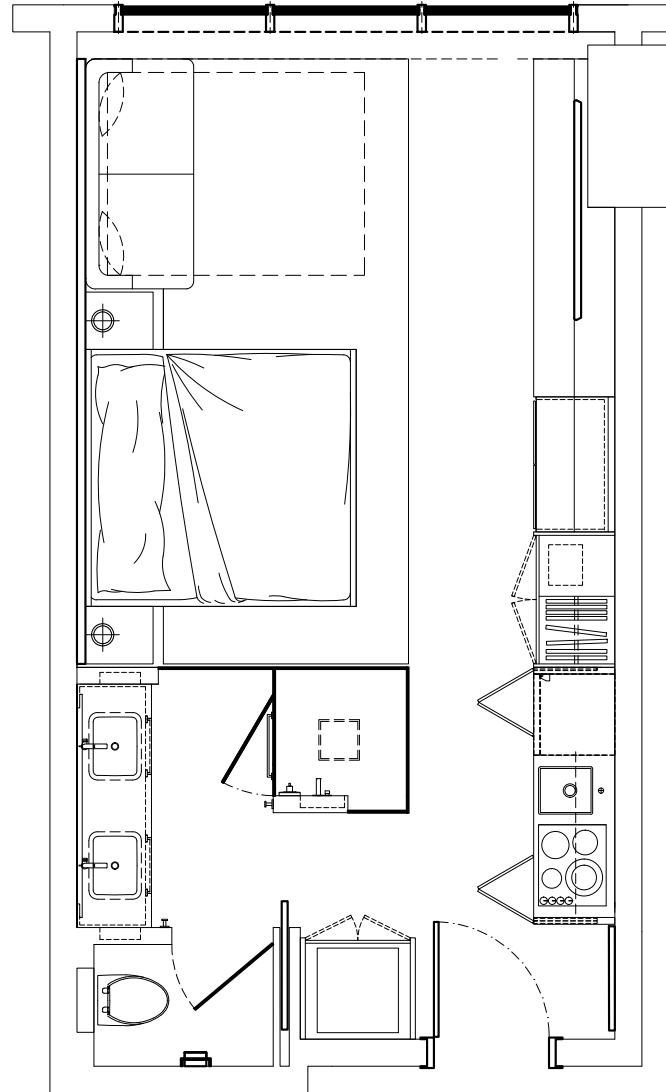


KEYPLATE C
LEVELS: 26, 27, 32, 33, 38, 39

A

STUDIO | 1 BATH

TOTAL: 368 SQ. FT. 34 M²

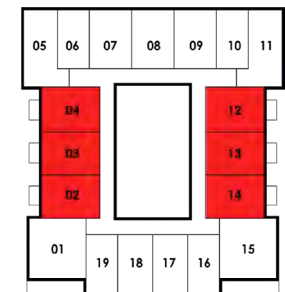
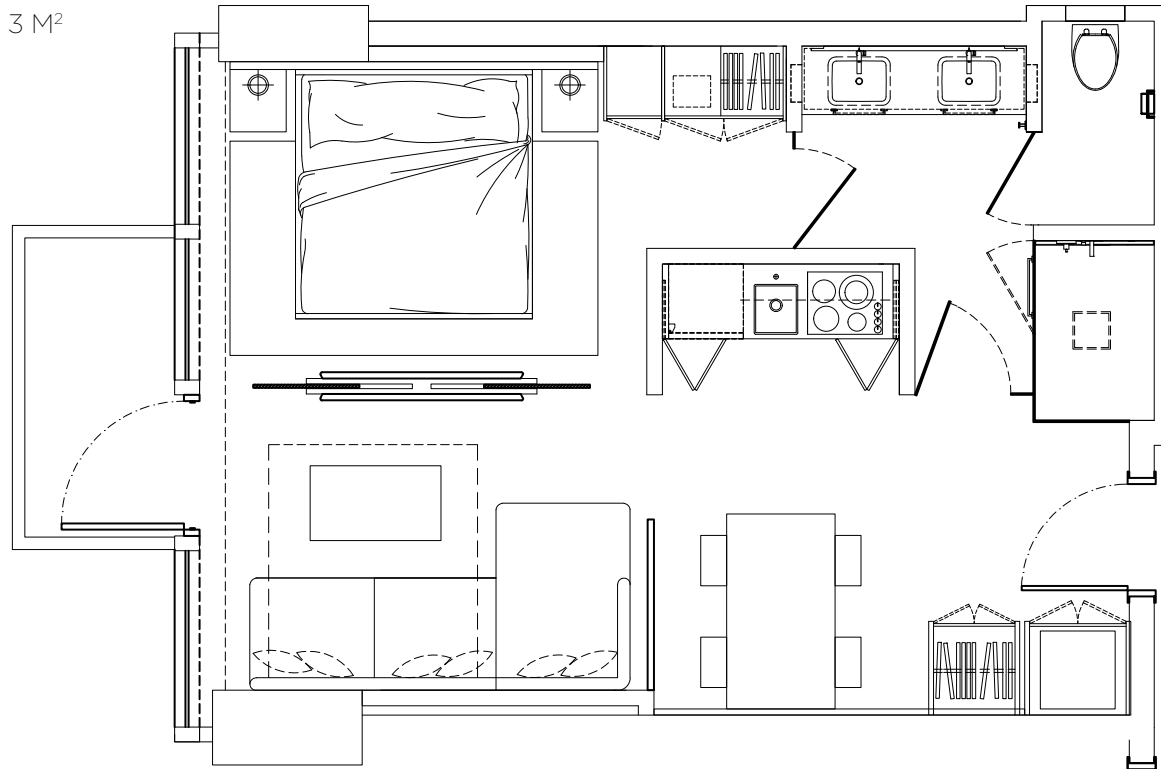


THESE DRAWINGS ARE CONCEPTUAL ONLY AND ARE FOR THE CONVENIENCE OF REFERENCE. THEY SHOULD NOT BE RELIED UPON AS REPRESENTATIONS, EXPRESS OR IMPLIED, OF THE FINAL DETAIL OF THE RESIDENCES. UNITS SHOWN ARE EXAMPLES OF UNIT TYPES AND MAY NOT DEPICT ACTUAL UNITS. STATED SQUARE FOOTAGES ARE RANGES FOR A PARTICULAR UNIT TYPE AND ARE MEASURED TO THE EXTERIOR BOUNDARIES OF THE EXTERIOR WALLS AND THE CENTERLINE OF INTERIOR DEMISING WALLS AND IN FACT VARY FROM THE AREA THAT WOULD BE DETERMINED BY USING THE DESCRIPTION AND DEFINITION OF THE "UNIT" SET FORTH IN THE DECLARATION (WHICH GENERALLY ONLY INCLUDES THE INTERIOR AIRSPACE BETWEEN THE PERIMETER WALLS AND EXCLUDES INTERIOR STRUCTURAL COMPONENTS).

B1

1 BEDROOM | 1 BATH

TOTAL: 519 SQ. FT. 48 M²
INTERIOR: 487 SQ. FT. 45 M²
EXTERIOR: 32 SQ. FT. 3 M²

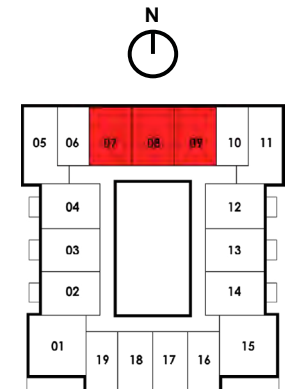
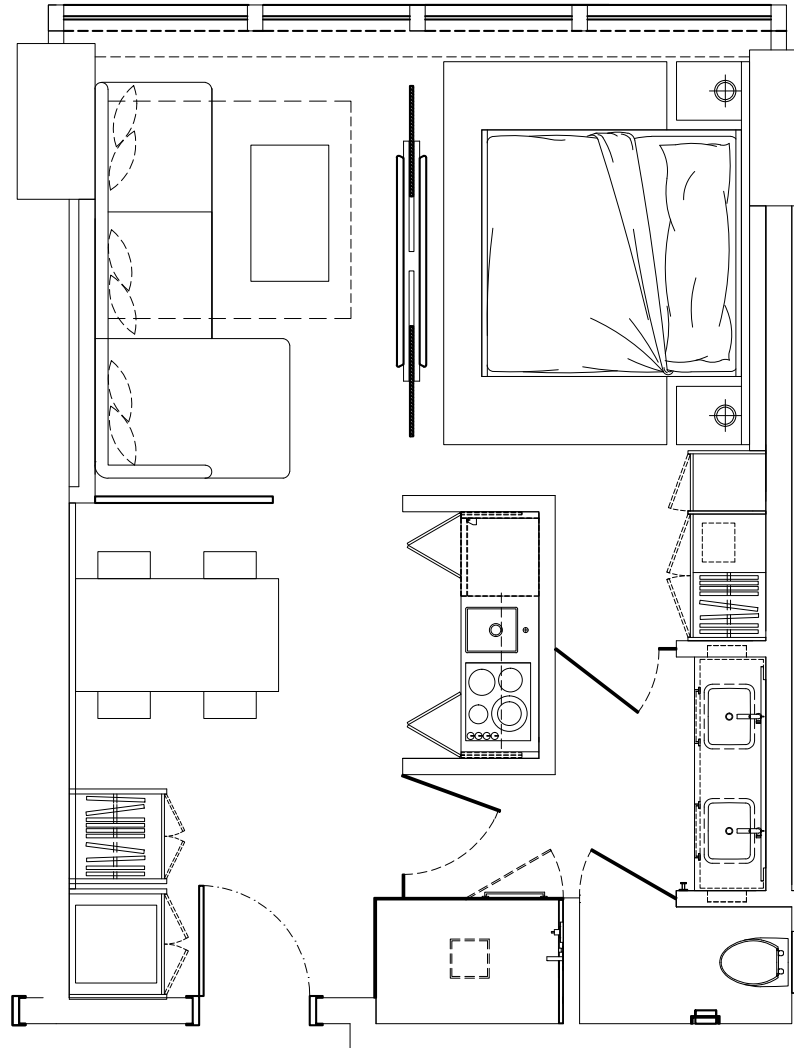


THESE DRAWINGS ARE CONCEPTUAL ONLY AND ARE FOR THE CONVENIENCE OF REFERENCE. THEY SHOULD NOT BE RELIED UPON AS REPRESENTATIONS, EXPRESS OR IMPLIED, OF THE FINAL DETAIL OF THE RESIDENCES. UNITS SHOWN ARE EXAMPLES OF UNIT TYPES AND MAY NOT DEPICT ACTUAL UNITS. STATED SQUARE FOOTAGES ARE RANGES FOR A PARTICULAR UNIT TYPE AND ARE MEASURED TO THE EXTERIOR BOUNDARIES OF THE EXTERIOR WALLS AND THE CENTERLINE OF INTERIOR DEMISING WALLS AND IN FACT VARY FROM THE AREA THAT WOULD BE DETERMINED BY USING THE DESCRIPTION AND DEFINITION OF THE "UNIT" SET FORTH IN THE DECLARATION (WHICH GENERALLY ONLY INCLUDES THE INTERIOR AIRSPACE BETWEEN THE PERIMETER WALLS AND EXCLUDES INTERIOR STRUCTURAL COMPONENTS).

B2

1 BEDROOM | 1 BATH

TOTAL: 487 SQ. FT. 45 M²

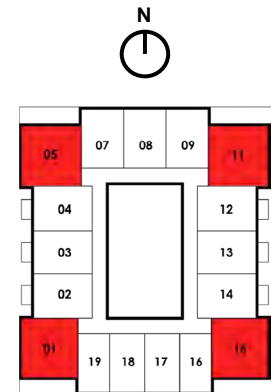
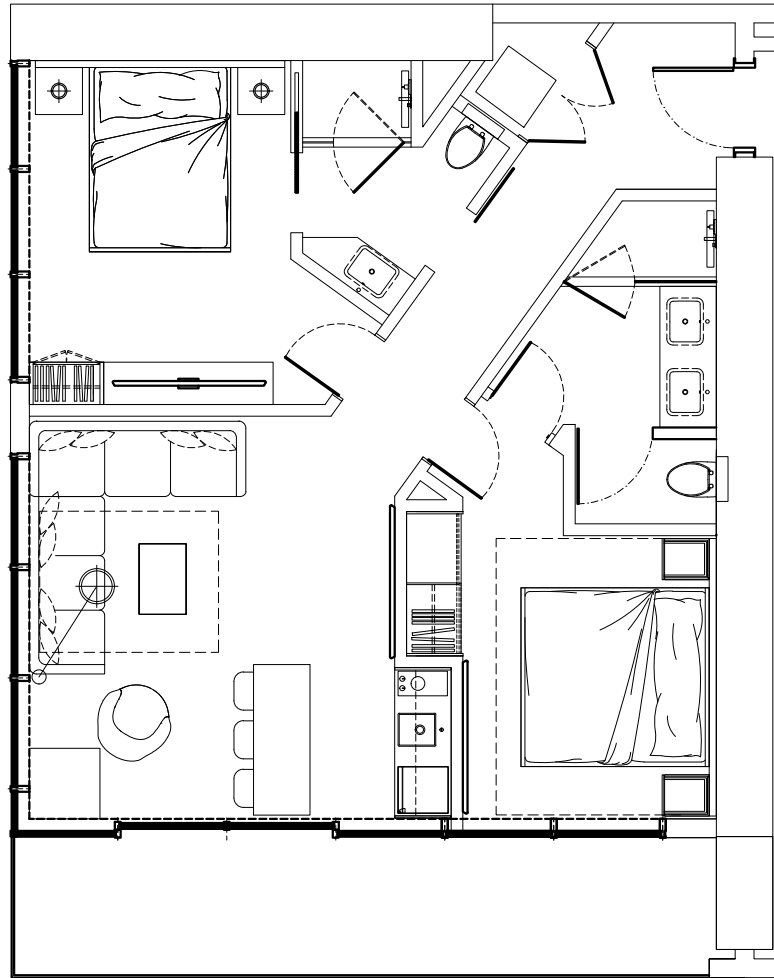


THESE DRAWINGS ARE CONCEPTUAL ONLY AND ARE FOR THE CONVENIENCE OF REFERENCE. THEY SHOULD NOT BE RELIED UPON AS REPRESENTATIONS, EXPRESS OR IMPLIED, OF THE FINAL DETAIL OF THE RESIDENCES. UNITS SHOWN ARE EXAMPLES OF UNIT TYPES AND MAY NOT DEPICT ACTUAL UNITS. STATED SQUARE FOOTAGES ARE RANGES FOR A PARTICULAR UNIT TYPE AND ARE MEASURED TO THE EXTERIOR BOUNDARIES OF THE EXTERIOR WALLS AND THE CENTERLINE OF INTERIOR DEMISING WALLS AND IN FACT VARY FROM THE AREA THAT WOULD BE DETERMINED BY USING THE DESCRIPTION AND DEFINITION OF THE "UNIT" SET FORTH IN THE DECLARATION (WHICH GENERALLY ONLY INCLUDES THE INTERIOR AIRSPACE BETWEEN THE PERIMETER WALLS AND EXCLUDES INTERIOR STRUCTURAL COMPONENTS).

C

2 BEDROOM | 2 BATH

TOTAL: 844 SQ. FT. 79 M²
 INTERIOR: 720 SQ. FT. 67 M²
 EXTERIOR: 124 SQ. FT. 12 M²

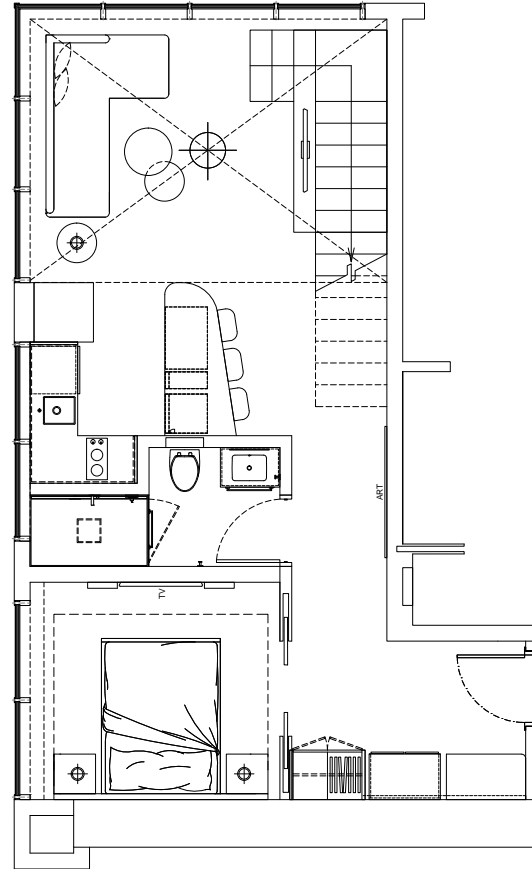


THESE DRAWINGS ARE CONCEPTUAL ONLY AND ARE FOR THE CONVENIENCE OF REFERENCE. THEY SHOULD NOT BE RELIED UPON AS REPRESENTATIONS, EXPRESS OR IMPLIED, OF THE FINAL DETAIL OF THE RESIDENCES. UNITS SHOWN ARE EXAMPLES OF UNIT TYPES AND MAY NOT DEPICT ACTUAL UNITS. STATED SQUARE FOOTAGES ARE RANGES FOR A PARTICULAR UNIT TYPE AND ARE MEASURED TO THE EXTERIOR BOUNDARIES OF THE EXTERIOR WALLS AND THE CENTERLINE OF INTERIOR DEMISING WALLS AND IN FACT VARY FROM THE AREA THAT WOULD BE DETERMINED BY USING THE DESCRIPTION AND DEFINITION OF THE "UNIT" SET FORTH IN THE DECLARATION (WHICH GENERALLY ONLY INCLUDES THE INTERIOR AIRSPACE BETWEEN THE PERIMETER WALLS AND EXCLUDES INTERIOR STRUCTURAL COMPONENTS).

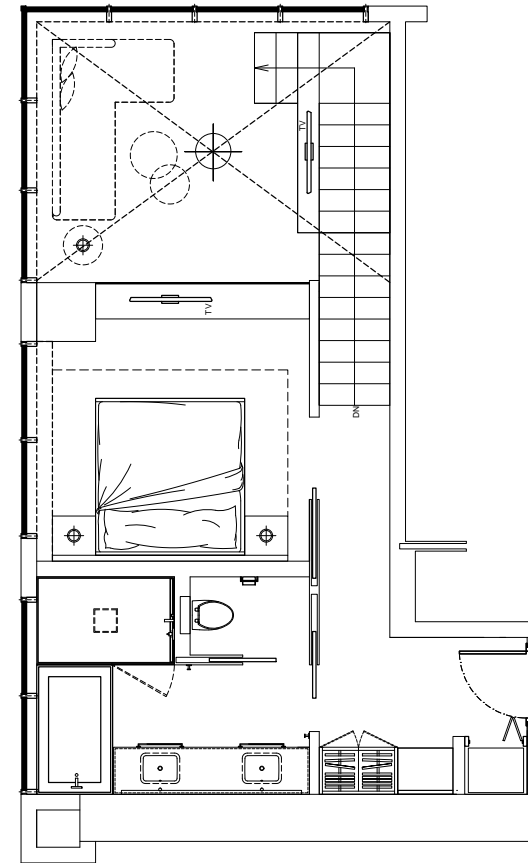
D

2 BEDROOM | 2 BATH

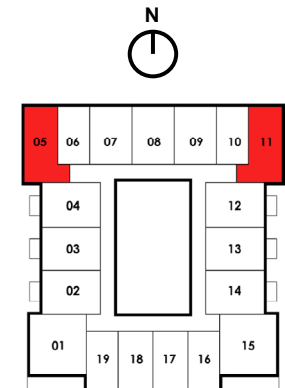
TOTAL: 869 SQ. FT. 81 M²
LOWER: 575 SQ. FT. 53 M²
UPPER: 294 SQ. FT. 27 M²



LOWER



UPPER



THESE DRAWINGS ARE CONCEPTUAL ONLY AND ARE FOR THE CONVENIENCE OF REFERENCE. THEY SHOULD NOT BE RELIED UPON AS REPRESENTATIONS, EXPRESS OR IMPLIED, OF THE FINAL DETAIL OF THE RESIDENCES. UNITS SHOWN ARE EXAMPLES OF UNIT TYPES AND MAY NOT DEPICT ACTUAL UNITS. STATED SQUARE FOOTAGES ARE RANGES FOR A PARTICULAR UNIT TYPE AND ARE MEASURED TO THE EXTERIOR BOUNDARIES OF THE EXTERIOR WALLS AND THE CENTERLINE OF INTERIOR DEMISING WALLS AND IN FACT VARY FROM THE AREA THAT WOULD BE DETERMINED BY USING THE DESCRIPTION AND DEFINITION OF THE "UNIT" SET FORTH IN THE DECLARATION (WHICH GENERALLY ONLY INCLUDES THE INTERIOR AIRSPACE BETWEEN THE PERIMETER WALLS AND EXCLUDES INTERIOR STRUCTURAL COMPONENTS).

IF YOU PREFER SELF MANAGEMENT

WHY CHOOSE ONE WHEN YOU CAN HAVE THEM ALL

ONEFINESTAY 1

AIRBNB 2

VRBO 3

TRIPADVISOR 4

BOOKING.COM 5

HOME AWAY 6

FLIPKEY 7

HOMESTAY 8

HOUSE SITTING 9

VILLAS DIRECT 10

VACATIONRENTALS.COM 11

WIMDU 12

INTERHOME 13

EXECUSTAY 14

PERFECT PLACES THAT COME 15

VACATIONRENTALS.COM 16

TURNKEY 17

ROOMARAMA 18

HOTELS.COM 19

HOUSETRIP 20

BEDYCASA 21

ROOMKEY 22

THIRDHOME 23

EXPEDIA 24

9FLATS 25

PRICELINE 26

ORBITZ 27

TRIVAGO 28

LATEROOMS.COM 29

HOTWIRE 30

KAYAK 31

TRAVELOCITY 32

LASTMINUTE.COM 33

AGODA 34

SPLENDIA 35

and many more...

NO RENTAL RESTRICTIONS

RENT BY THE DAY | 365 DAYS A YEAR

SIMPLE MATH AND TIMING THAT MAKE SENSE

YOUR LEGACY RESERVATIONS AND RENTALS CAN ALL BE CONTROLLED ELECTRONICALLY UTILIZING OUR THIRD PARTY TOOLS AND A PROPRIETARY SYSTEM LEGACY HOTELS AND RESORTS IS DEVELOPING. WHETHER YOU CHOOSE OUR HOTEL BRAND TO GIVE YOU SEAMLESS CONTROL WITHOUT ANY HASSLE OR CHOSE TO MANAGE THINGS YOURSELF YOU ARE ALWAYS IN CONTROL FROM ANYWHERE YOU ARE.

CONTROL CENTER

A dashboard that can be viewed on your mobile devices to see your asset performance and revenue at any time.



CHANNEL MANAGEMENT

Software allows all your reservation platforms to be up-to-date with all other reservations so you can avoid duplicate bookings and plan your perfect vacation when you want.

PRICE OPTIMIZATION

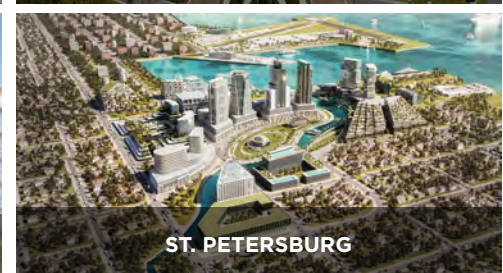
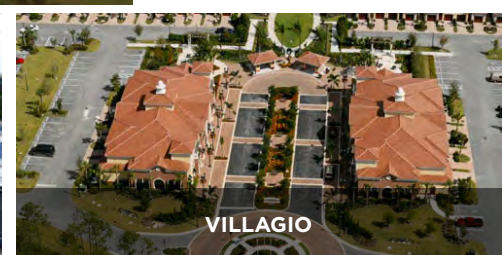
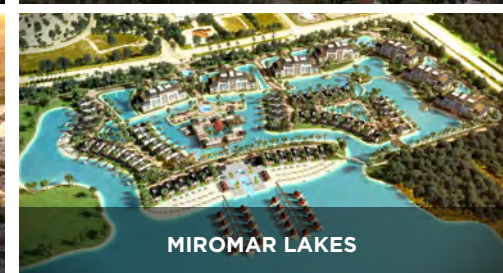
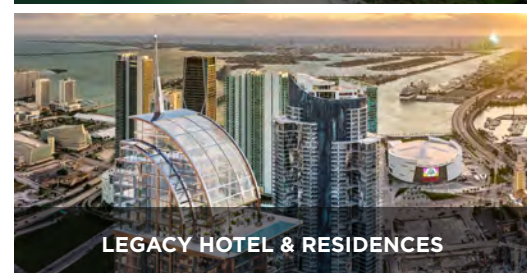
With algorithms designed to know when and where the best events in the world and in your city are happening you can count on pricing that reflects the supply and demand for your home - any day of the year.

DEVELOPER



RPC is an award-winning real estate developer and enjoys a 40-year reputation of creating exquisite large-scale, amenity-rich properties. Its profitable portfolio of completed projects include Mixed-Use, Condominium & Planned Residential Communities, Multi-Family Apartment Complexes, Hospitality including Vacation Rentals, Second Homes, and Serviced Residences. Since the 1970's, RPC has completed more than 50 different developments, representing more than 6,000 income-producing units, totaling more than \$2.5 billion in asset value.

The company has established itself as an industry leader because of its exceptional attention to detail and by creating high-added-value facilities that are strategically located and embody an unbeatable combination of focused design, aesthetic form, and purposeful functionality that together resonate an elegant sense of space and refined quality of life.



OVER \$2.5BILLION BUILT

LEGACY HOTEL & RESIDENCES BUYERS
CONTACT:
STEVE SAMUELS | OCEANFRONT REALTY
305.494.1767

<https://condosandcondos.com/condos-for-sale/Miami/Legacy-Hotel--Residences#contact>

.