

OCEAN PARK

SOUTH BEACH

Beach House 01

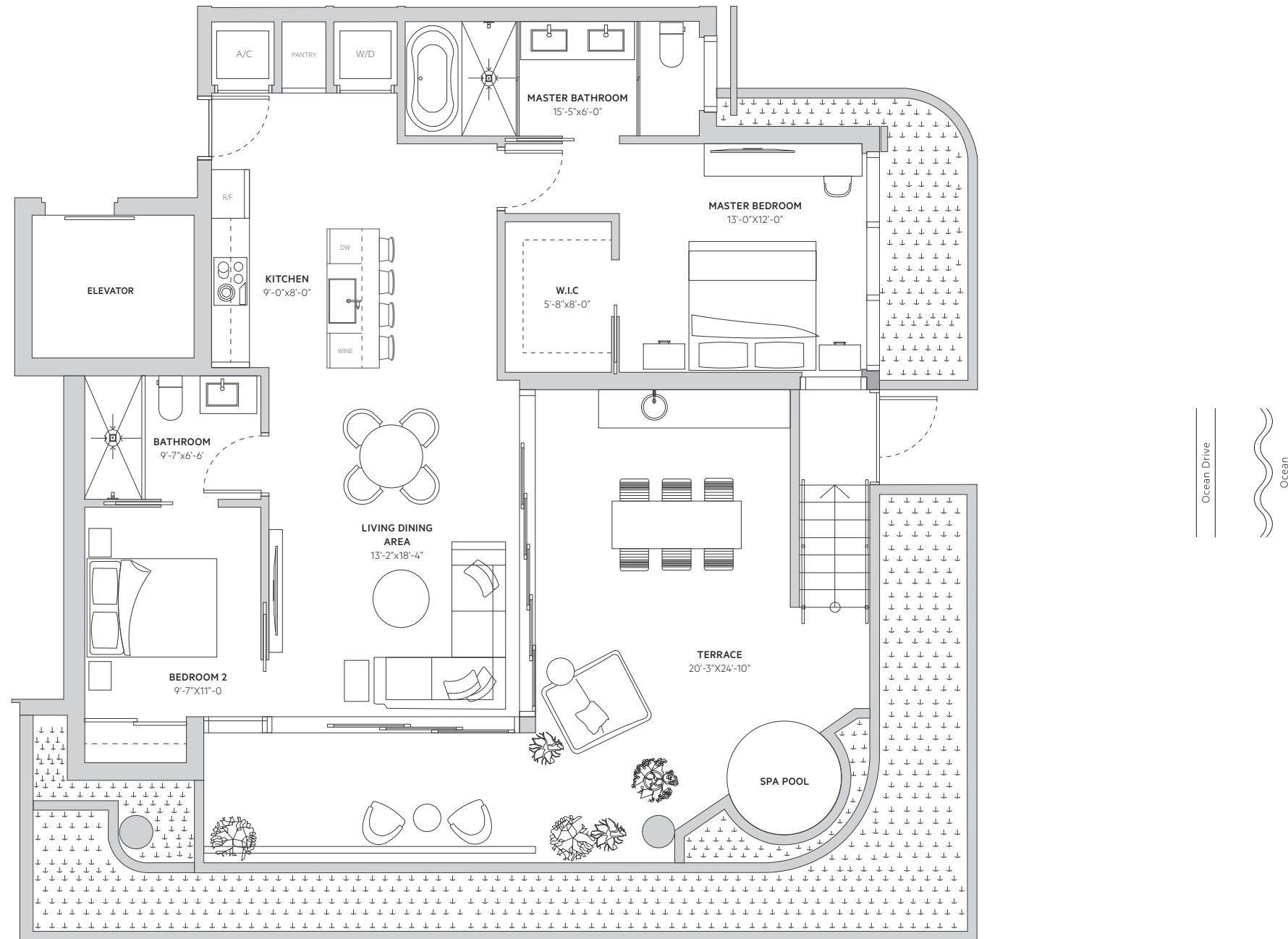
Ground Level

2 Bedrooms
2 Bathrooms
Private Terrace

Interior
1,117 SQ FT | 103.8 SQ M

Exterior
597 SQ FT | 55.5 SQ M

Total
1,714 SQ FT | 159.3 SQ M



These materials are not intended to be an offer to sell, or solicitation to buy a unit in the condominium. Such an offering shall only be made pursuant to the prospectus(offering circular) for the condominium and no statements should be relied upon unless made in the prospectus or in the applicable purchase agreement. Multiplan Real Estate Asset Management ("Multiplan REAM") is not the project Developer. This Condominium is being developed by 312 Ocean Park, LLC, a Florida limited liability company, which has a limited right to use the trademarked names and logos of Multiplan REAM. Any and all statements, disclosures and/or representations shall be deemed made by the Developer and not by Multiplan REAM and you agree to look solely to Developer (and not to Multiplan REAM and/or any of its affiliates) with respect to any and all matters relating to the marketing and/or development of the Condominium and with respect to the sales of units in the Condominium. Additionally, Multiplan Empreendimentos Imobiliarios ("Multiplan Brazil") is not related to, or an affiliate of, Multiplan REAM or the Developer. Any and all statements, disclosures and/or representations shall be deemed made by the Developer and not by Multiplan Brazil and you agree to look solely to Developer (and not to Multiplan Brazil and/or any of its affiliates) with respect to any and all matters relating to the marketing and/or development of the Condominium and with respect to the sales of units in the Condominium. Stated square footages and dimensions are measured to the exterior boundaries of the exterior walls and the centerline of interior demising walls and in fact vary from the square footage and dimensions that would be determined by using the description and definition of the "Unit" set forth in the Declaration (which generally only includes the interior airspace between the perimeter walls and excludes all interior structural components and other common elements).

ORAL REPRESENTATIONS CANNOT BE RELIED UPON AS CORRECTLY STATING THE REPRESENTATIONS OF THE DEVELOPER. FOR CORRECT REPRESENTATIONS, REFERENCE SHOULD BE MADE TO THE DOCUMENTS REQUIRED BY SECTION 718.503, FLORIDA STATUTES, TO BE FURNISHED BY A DEVELOPER TO A BUYER OR LESSEE. These materials are not intended to be an offer to sell, or solicitation to buy a unit in the condominium.



OCEAN PARK

SOUTH BEACH

Beach House 02

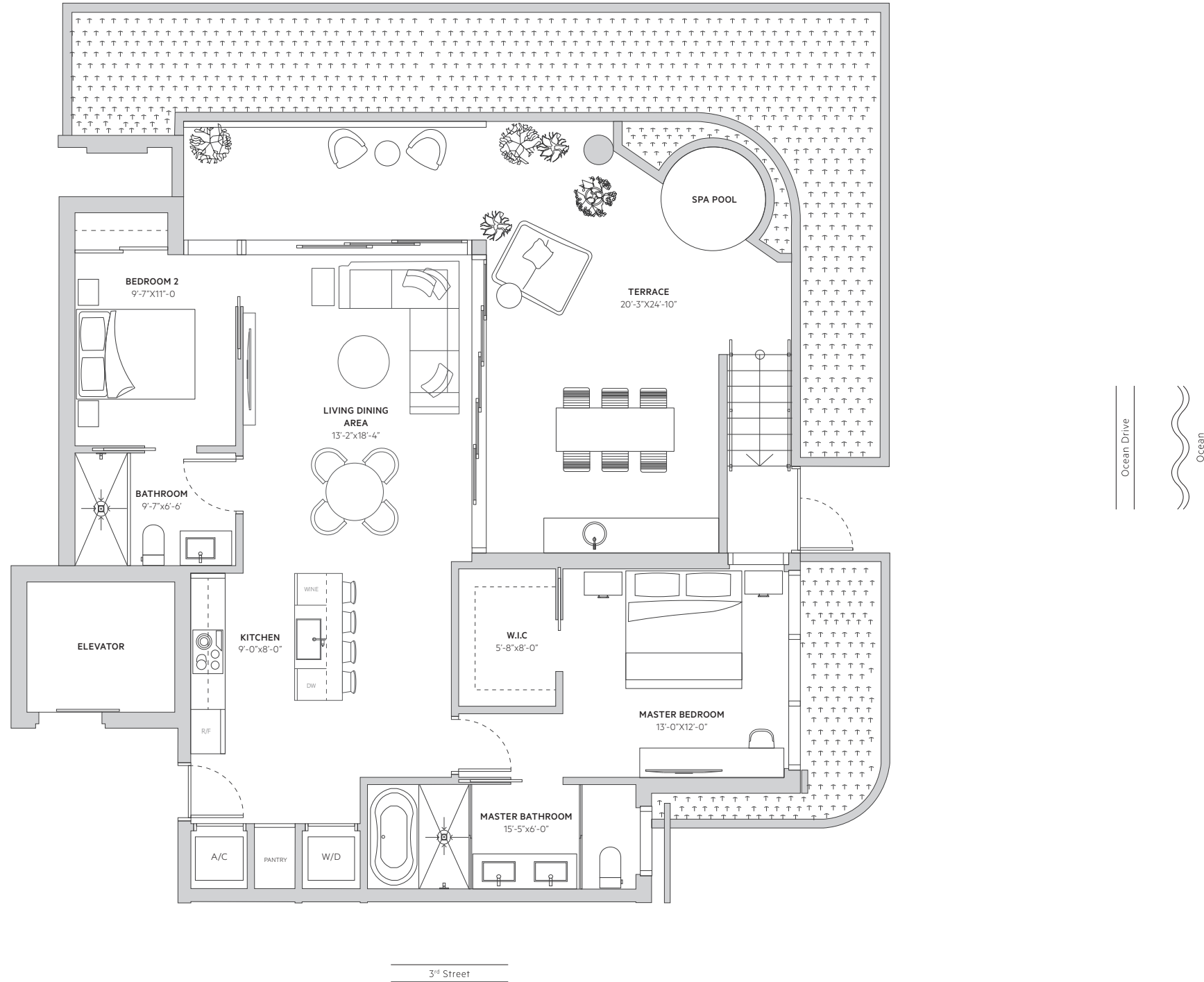
Ground Level

2 Bedrooms
2 Bathrooms
Private Terrace

Interior
1,117 SQ FT | 103.8 SQ M

Exterior
597 SQ FT | 55.5 SQ M

Total
1,714 SQ FT | 159.3 SQ M



These materials are not intended to be an offer to sell, or solicitation to buy a unit in the condominium. Such an offering shall only be made pursuant to the prospectus(offering circular) for the condominium and no statements should be relied upon unless made in the prospectus or in the applicable purchase agreement. Multiplan Real Estate Asset Management ("Multiplan REAM") is not the project Developer. This Condominium is being developed by 312 Ocean Park, LLC, a Florida limited liability company, which has a limited right to use the trademarked names and logos of Multiplan REAM. Any and all statements, disclosures and/or representations shall be deemed made by the Developer and not by Multiplan REAM and you agree to look solely to Developer (and not to Multiplan REAM and/or any of its affiliates) with respect to any and all matters relating to the marketing and/or development of the Condominium and with respect to the sales of units in the Condominium. Additionally, Multiplan Empreendimentos Imobiliarios ("Multiplan Brazil") is not related to, or an affiliate of, Multiplan REAM or the Developer. Any and all statements, disclosures and/or representations shall be deemed made by the Developer and not by Multiplan Brazil and you agree to look solely to Developer (and not to Multiplan Brazil and/or any of its affiliates) with respect to any and all matters relating to the marketing and/or development of the Condominium and with respect to the sales of units in the Condominium. Stated square footages and dimensions are measured to the exterior boundaries of the exterior walls and the centerline of interior demising walls and in fact vary from the square footage and dimensions that would be determined by using the description and definition of the "Unit" set forth in the Declaration (which generally only includes the interior airspace between the perimeter walls and excludes all interior structural components and other common elements).



ORAL REPRESENTATIONS CANNOT BE RELIED UPON AS CORRECTLY STATING THE REPRESENTATIONS OF THE DEVELOPER. FOR CORRECT REPRESENTATIONS, REFERENCE SHOULD BE MADE TO THE DOCUMENTS REQUIRED BY SECTION 718.503, FLORIDA STATUTES, TO BE FURNISHED BY A DEVELOPER TO A BUYER OR LESSEE. These materials are not intended to be an offer to sell, or solicitation to buy a unit in the condominium.



OCEAN PARK

SOUTH BEACH

Beach House 03

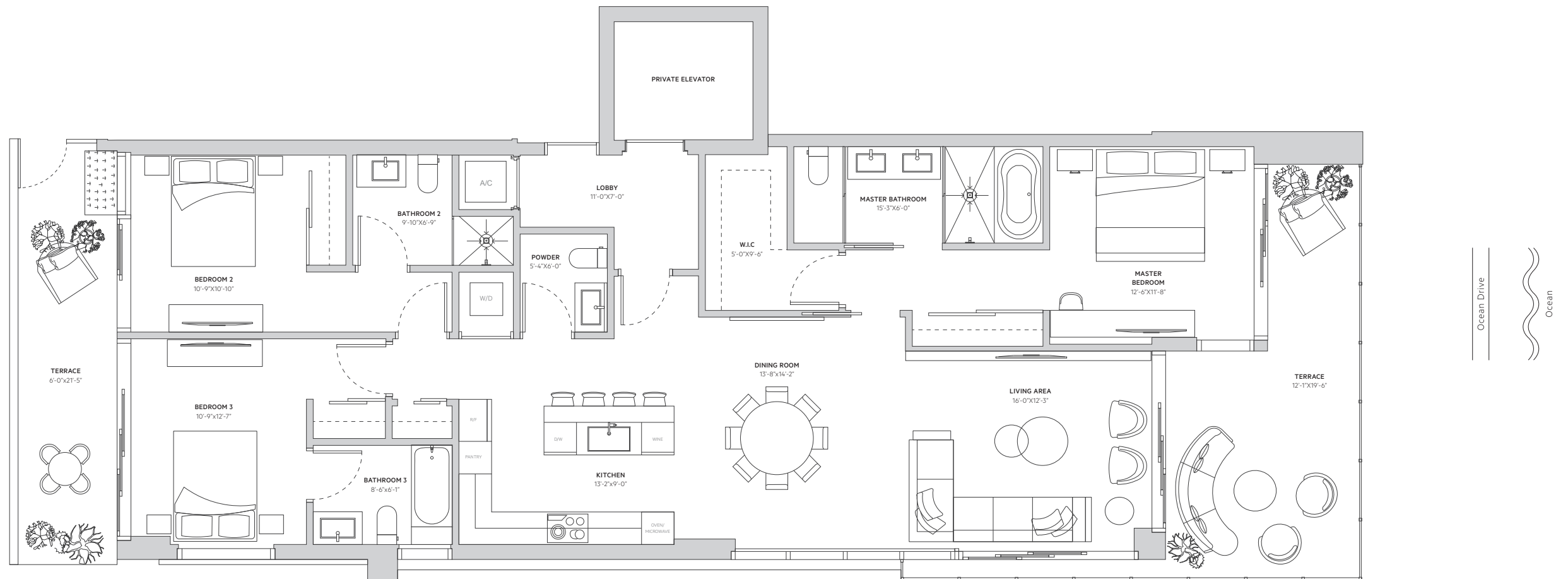
Second Level

3 Bedrooms
3.5 Bathrooms
Private Terraces

Interior
1,715 SQ FT | 159.3 SQ M

Exterior
423 SQ FT | 39.3 SQ M

Total
2,138 SQ FT | 198.6 SQ M



These materials are not intended to be an offer to sell, or solicitation to buy a unit in the condominium. Such an offering shall only be made pursuant to the prospectus(offering circular) for the condominium and no statements should be relied upon unless made in the prospectus or in the applicable purchase agreement. Multiplan Real Estate Asset Management ("Multiplan REAM") is not the project Developer. This Condominium is being developed by 312 Ocean Park, LLC, a Florida limited liability company, which has a limited right to use the trademarked names and logos of Multiplan REAM. Any and all statements, disclosures and/or representations shall be deemed made by the Developer and not by Multiplan REAM and you agree to look solely to Developer (and not to Multiplan REAM and/or any of its affiliates) with respect to any and all matters relating to the marketing and/or development of the Condominium and with respect to the sales of units in the Condominium. Additionally, Multiplan Empreendimentos Imobiliarios ("Multiplan Brazil") is not related to, or an affiliate of, Multiplan REAM or the Developer. Any and all statements, disclosures and/or representations shall be deemed made by the Developer and not by Multiplan Brazil and you agree to look solely to Developer (and not to Multiplan Brazil and/or any of its affiliates) with respect to any and all matters relating to the marketing and/or development of the Condominium and with respect to the sales of units in the Condominium. Stated square footages and dimensions are measured to the exterior boundaries of the exterior walls and the centerline of interior demising walls and in fact vary from the square footage and dimensions that would be determined by using the description and definition of the "Unit" set forth in the Declaration (which generally only includes the interior airspace between the perimeter walls and excludes all interior structural components and other common elements).



ORAL REPRESENTATIONS CANNOT BE RELIED UPON AS CORRECTLY STATING THE REPRESENTATIONS OF THE DEVELOPER. FOR CORRECT REPRESENTATIONS, REFERENCE SHOULD BE MADE TO THE DOCUMENTS REQUIRED BY SECTION 718.503, FLORIDA STATUTES, TO BE FURNISHED BY A DEVELOPER TO A BUYER OR LESSEE. These materials are not intended to be an offer to sell, or solicitation to buy a unit in the condominium.



OCEAN PARK

SOUTH BEACH

Beach House 04

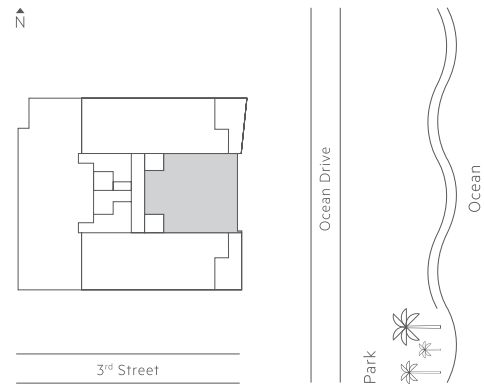
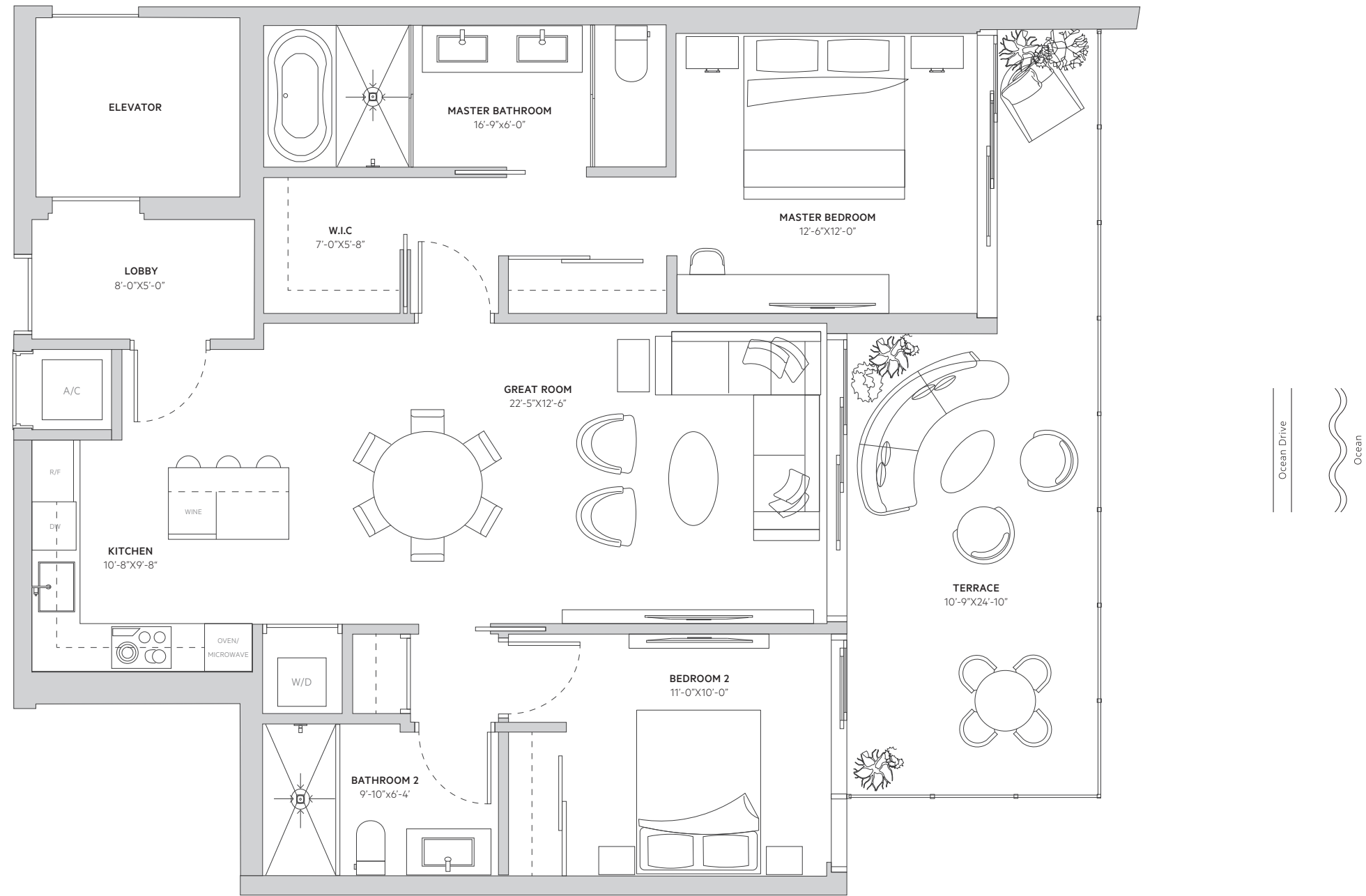
Second Level

2 Bedrooms
2 Bathrooms
Private Terrace

Interior
1,160 SQ FT | 107.8 SQ M

Exterior
267 SQ FT | 24.8 SQ M

Total
1,427 SQ FT | 132.6 SQ M



These materials are not intended to be an offer to sell, or solicitation to buy a unit in the condominium. Such an offering shall only be made pursuant to the prospectus (offering circular) for the condominium and no statements should be relied upon unless made in the prospectus or in the applicable purchase agreement. Multiplan Real Estate Asset Management ("Multiplan REAM") is not the project Developer. This Condominium is being developed by 312 Ocean Park, LLC, a Florida limited liability company, which has a limited right to use the trademarked names and logos of Multiplan REAM. Any and all statements, disclosures and/or representations shall be deemed made by the Developer and not by Multiplan REAM and you agree to look solely to Developer (and not to Multiplan REAM and/or any of its affiliates) with respect to any and all matters relating to the marketing and/or development of the Condominium and with respect to the sales of units in the Condominium. Additionally, Multiplan Empreendimentos Imobiliarios ("Multiplan Brazil") is not related to, or an affiliate of, Multiplan REAM or the Developer. Any and all statements, disclosures and/or representations shall be deemed made by the Developer and not by Multiplan Brazil and you agree to look solely to Developer (and not to Multiplan Brazil and/or any of its affiliates) with respect to any and all matters relating to the marketing and/or development of the Condominium and with respect to the sales of units in the Condominium. Stated square footages and dimensions are measured to the exterior boundaries of the exterior walls and the centerline of interior demising walls and in fact vary from the square footage and dimensions that would be determined by using the description and definition of the "Unit" set forth in the Declaration (which generally only includes the interior airspace between the perimeter walls and excludes all interior structural components and other common elements).



ORAL REPRESENTATIONS CANNOT BE RELIED UPON AS CORRECTLY STATING THE REPRESENTATIONS OF THE DEVELOPER. FOR CORRECT REPRESENTATIONS, REFERENCE SHOULD BE MADE TO THE DOCUMENTS REQUIRED BY SECTION 718.503, FLORIDA STATUTES, TO BE FURNISHED BY A DEVELOPER TO A BUYER OR LESSEE. These materials are not intended to be an offer to sell, or solicitation to buy a unit in the condominium.



OCEAN PARK

SOUTH BEACH

Beach House 05

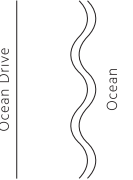
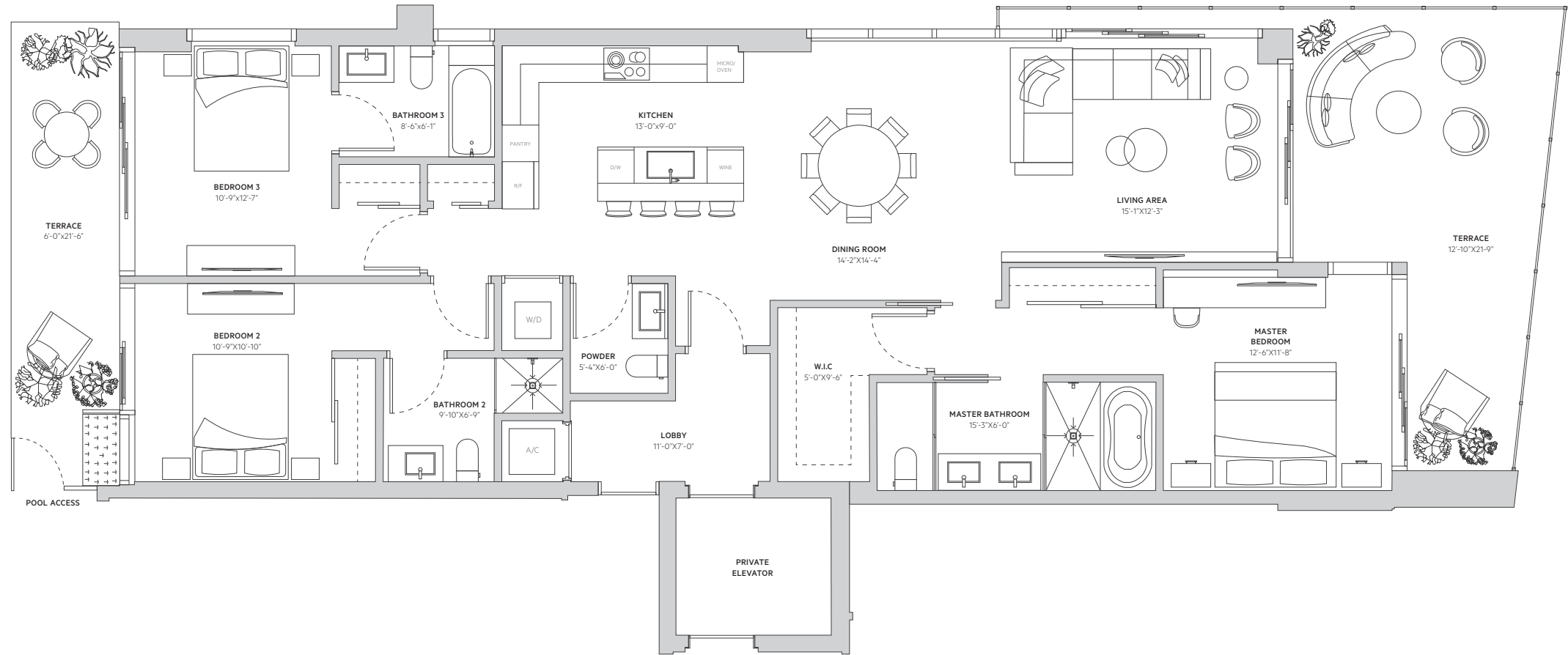
Second Level

3 Bedrooms
3.5 Bathrooms
Private Terraces

Interior
1,712 SQ FT | 159.1 SQ M

Exterior
468 SQ FT | 43.5 SQ M

Total
2,180 SQ FT | 202.6 SQ M



These materials are not intended to be an offer to sell, or solicitation to buy a unit in the condominium. Such an offering shall only be made pursuant to the prospectus(offering circular) for the condominium and no statements should be relied upon unless made in the prospectus or in the applicable purchase agreement. Multiplan Real Estate Asset Management ("Multiplan REAM") is not the project Developer. This Condominium is being developed by 312 Ocean Park, LLC, a Florida limited liability company, which has a limited right to use the trademarked names and logos of Multiplan REAM. Any and all statements, disclosures and/or representations shall be deemed made by the Developer and not by Multiplan REAM and you agree to look solely to Developer (and not to Multiplan REAM and/or any of its affiliates) with respect to any and all matters relating to the marketing and/or development of the Condominium and with respect to the sales of units in the Condominium. Additionally, Multiplan Empreendimentos Imobiliarios ("Multiplan Brazil") is not related to, or an affiliate of, Multiplan REAM or the Developer. Any and all statements, disclosures and/or representations shall be deemed made by the Developer and not by Multiplan Brazil and you agree to look solely to Developer (and not to Multiplan Brazil and/or any of its affiliates) with respect to any and all matters relating to the marketing and/or development of the Condominium and with respect to the sales of units in the Condominium. Stated square footages and dimensions are measured to the exterior boundaries of the exterior walls and the centerline of interior demising walls and in fact vary from the square footage and dimensions that would be determined by using the description and definition of the "Unit" set forth in the Declaration (which generally only includes the interior airspace between the perimeter walls and excludes all interior structural components and other common elements).



ORAL REPRESENTATIONS CANNOT BE RELIED UPON AS CORRECTLY STATING THE REPRESENTATIONS OF THE DEVELOPER. FOR CORRECT REPRESENTATIONS, REFERENCE SHOULD BE MADE TO THE DOCUMENTS REQUIRED BY SECTION 718.503, FLORIDA STATUTES, TO BE FURNISHED BY A DEVELOPER TO A BUYER OR LESSEE. These materials are not intended to be an offer to sell, or solicitation to buy a unit in the condominium.



OCEAN PARK

SOUTH BEACH

Beach House 06

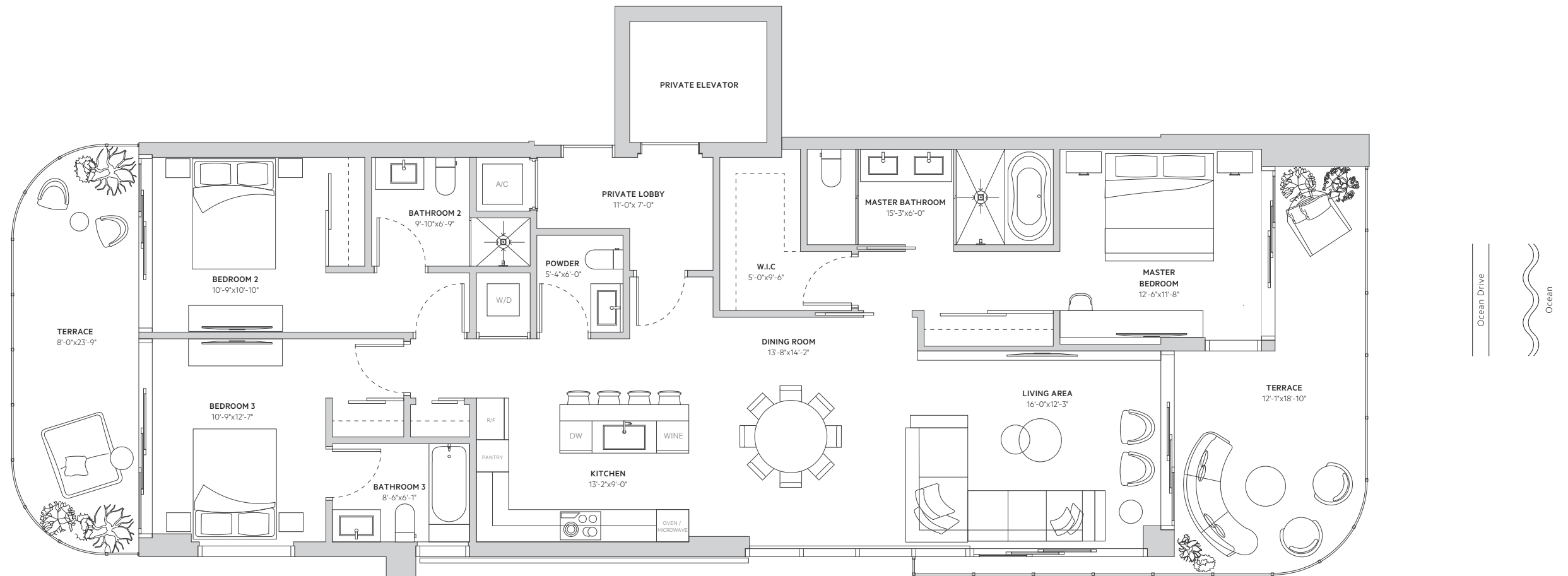
Third Level

3 Bedrooms
3.5 Bathrooms
Private Terraces

Interior
1,717 SQ FT | 159.5 SQ M

Exterior
438 SQ FT | 40.7 SQ M

Total
2,155 SQ FT | 200.2 SQ M



These materials are not intended to be an offer to sell, or solicitation to buy a unit in the condominium. Such an offering shall only be made pursuant to the prospectus(offering circular) for the condominium and no statements should be relied upon unless made in the prospectus or in the applicable purchase agreement. Multiplan Real Estate Asset Management ("Multiplan REAM") is not the project Developer. This Condominium is being developed by 312 Ocean Park, LLC, a Florida limited liability company, which has a limited right to use the trademarked names and logos of Multiplan REAM. Any and all statements, disclosures and/or representations shall be deemed made by the Developer and not by Multiplan REAM and you agree to look solely to Developer (and not to Multiplan REAM and/or any of its affiliates) with respect to any and all matters relating to the marketing and/or development of the Condominium and with respect to the sales of units in the Condominium. Additionally, Multiplan Empreendimentos Imobiliarios ("Multiplan Brazil") is not related to, or an affiliate of, Multiplan REAM or the Developer. Any and all statements, disclosures and/or representations shall be deemed made by the Developer and not by Multiplan Brazil and you agree to look solely to Developer (and not to Multiplan Brazil and/or any of its affiliates) with respect to any and all matters relating to the marketing and/or development of the Condominium and with respect to the sales of units in the Condominium. Stated square footages and dimensions are measured to the exterior boundaries of the exterior walls and the centerline of interior demising walls and in fact vary from the square footage and dimensions that would be determined by using the description and definition of the "Unit" set forth in the Declaration (which generally only includes the interior airspace between the perimeter walls and excludes all interior structural components and other common elements).



ORAL REPRESENTATIONS CANNOT BE RELIED UPON AS CORRECTLY STATING THE REPRESENTATIONS OF THE DEVELOPER. FOR CORRECT REPRESENTATIONS, REFERENCE SHOULD BE MADE TO THE DOCUMENTS REQUIRED BY SECTION 718.503, FLORIDA STATUTES, TO BE FURNISHED BY A DEVELOPER TO A BUYER OR LESSEE. These materials are not intended to be an offer to sell, or solicitation to buy a unit in the condominium.



OCEAN PARK

SOUTH BEACH

Beach House 07

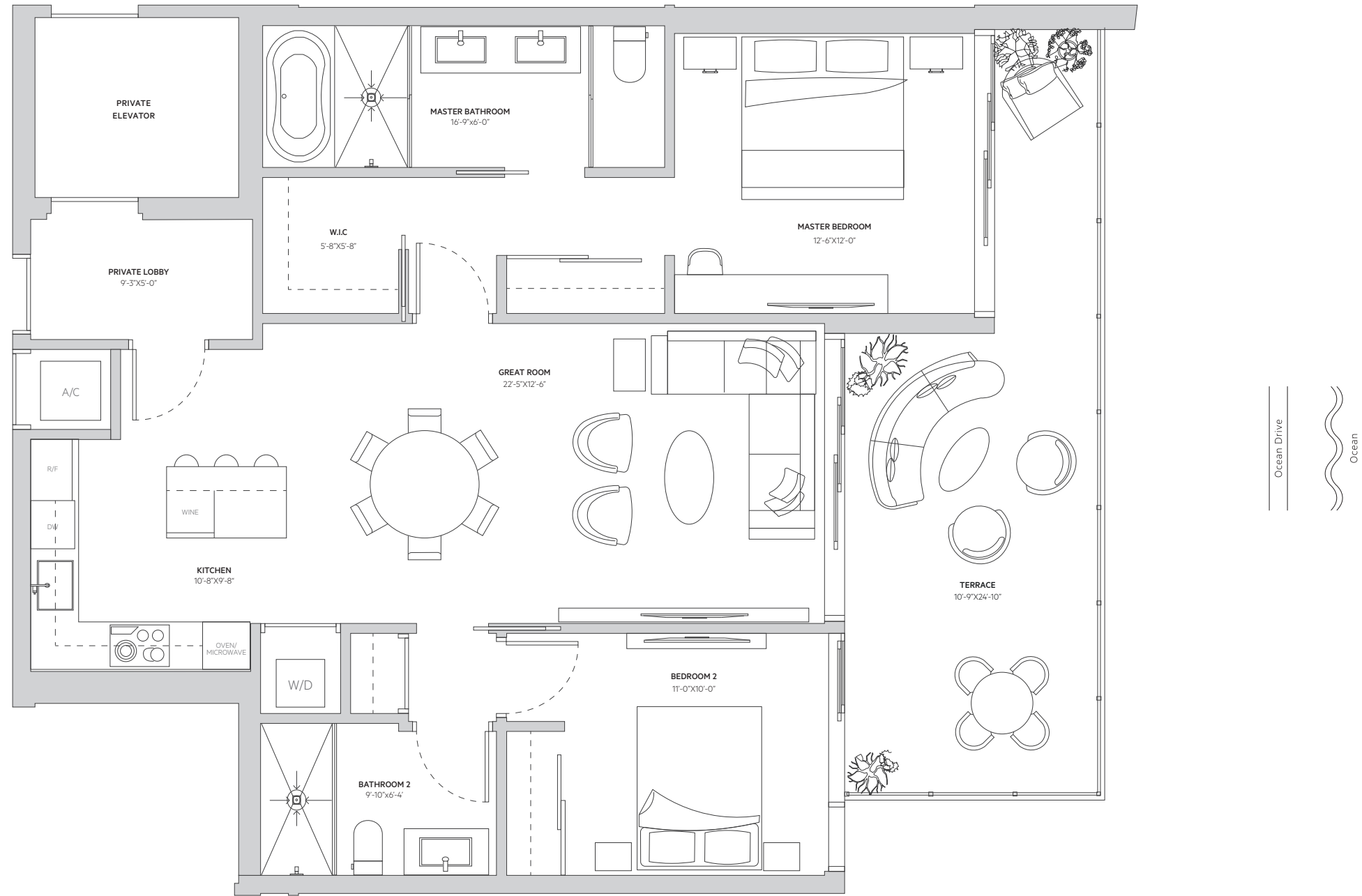
Third Level

2 Bedrooms
2 Bathrooms
Private Terrace

Interior
1,160 SQ FT | 107.8 SQ M

Exterior
267 SQ FT | 24.8 SQ M

Total
1,427 SQ FT | 132.6 SQ M



These materials are not intended to be an offer to sell, or solicitation to buy a unit in the condominium. Such an offering shall only be made pursuant to the prospectus(offering circular) for the condominium and no statements should be relied upon unless made in the prospectus or in the applicable purchase agreement. Multiplan Real Estate Asset Management ("Multiplan REAM") is not the project Developer. This Condominium is being developed by 312 Ocean Park, LLC, a Florida limited liability company, which has a limited right to use the trademarked names and logos of Multiplan REAM. Any and all statements, disclosures and/or representations shall be deemed made by the Developer and not by Multiplan REAM and you agree to look solely to Developer (and not to Multiplan REAM and/or any of its affiliates) with respect to any and all matters relating to the marketing and/or development of the Condominium and with respect to the sales of units in the Condominium. Additionally, Multiplan Empreendimentos Imobiliarios ("Multiplan Brazil") is not related to, or an affiliate of, Multiplan REAM or the Developer. Any and all statements, disclosures and/or representations shall be deemed made by the Developer and not by Multiplan Brazil and you agree to look solely to Developer (and not to Multiplan Brazil and/or any of its affiliates) with respect to any and all matters relating to the marketing and/or development of the Condominium and with respect to the sales of units in the Condominium. Stated square footages and dimensions are measured to the exterior boundaries of the exterior walls and the centerline of interior demising walls and in fact vary from the square footage and dimensions that would be determined by using the description and definition of the "Unit" set forth in the Declaration (which generally only includes the interior airspace between the perimeter walls and excludes all interior structural components and other common elements).



ORAL REPRESENTATIONS CANNOT BE RELIED UPON AS CORRECTLY STATING THE REPRESENTATIONS OF THE DEVELOPER. FOR CORRECT REPRESENTATIONS, REFERENCE SHOULD BE MADE TO THE DOCUMENTS REQUIRED BY SECTION 718.503, FLORIDA STATUTES, TO BE FURNISHED BY A DEVELOPER TO A BUYER OR LESSEE. These materials are not intended to be an offer to sell, or solicitation to buy a unit in the condominium.



OCEAN PARK

SOUTH BEACH

Beach House 08

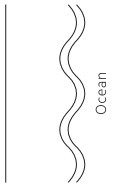
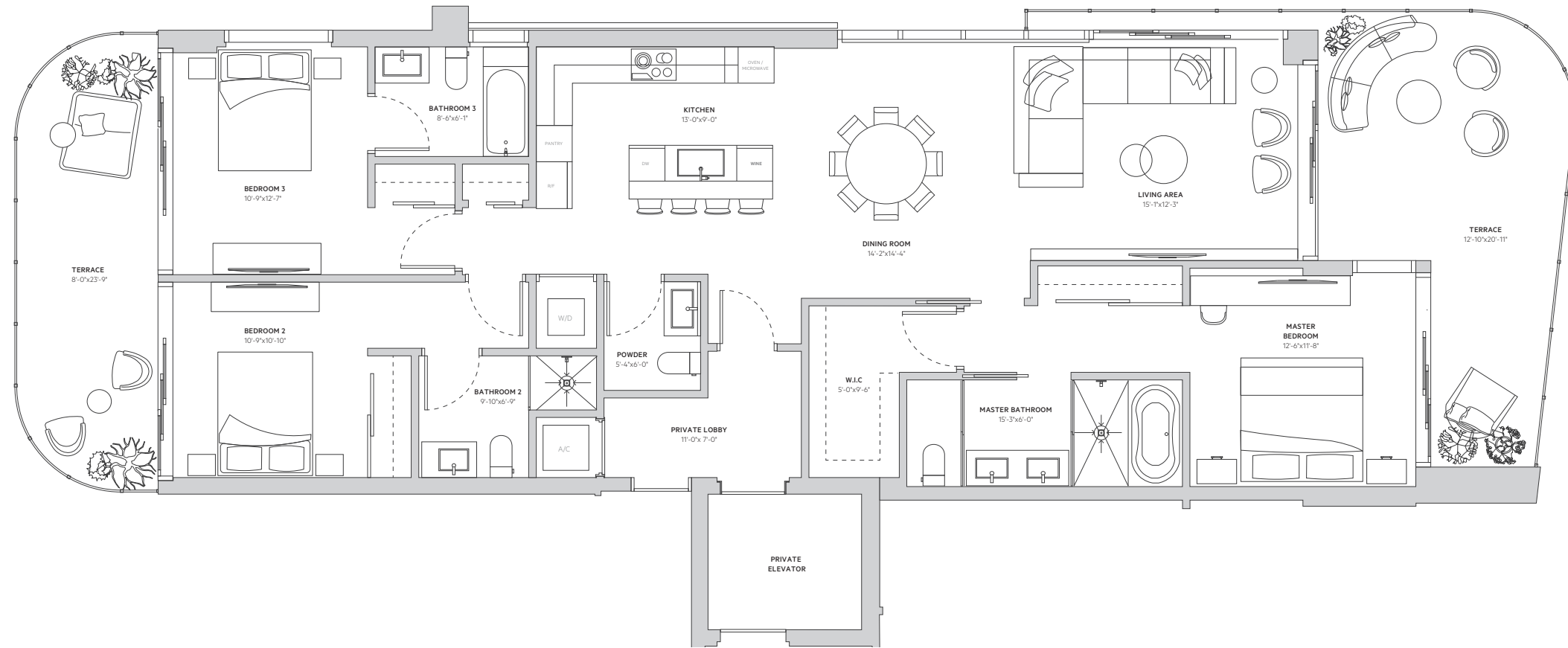
Third Level

3 Bedrooms
3.5 Bathrooms
Private Terraces

Interior
1,714 SQ FT | 159.2 SQ M

Exterior
481 SQ FT | 44.7 SQ M

Total
2,195 SQ FT | 203.9 SQ M



3rd Street

These materials are not intended to be an offer to sell, or solicitation to buy a unit in the condominium. Such an offering shall only be made pursuant to the prospectus (offering circular) for the condominium and no statements should be relied upon unless made in the prospectus or in the applicable purchase agreement. Multiplan Real Estate Asset Management ("Multiplan REAM") is not the project Developer. This Condominium is being developed by 312 Ocean Park, LLC, a Florida limited liability company, which has a limited right to use the trademarked names and logos of Multiplan REAM. Any and all statements, disclosures and/or representations shall be deemed made by the Developer and not by Multiplan REAM and you agree to look solely to Developer (and not to Multiplan REAM and/or any of its affiliates) with respect to any and all matters relating to the marketing and/or development of the Condominium and with respect to the sales of units in the Condominium. Additionally, Multiplan Empreendimentos Imobiliarios ("Multiplan Brazil") is not related to, or an affiliate of, Multiplan REAM or the Developer. Any and all statements, disclosures and/or representations shall be deemed made by the Developer and not by Multiplan Brazil and you agree to look solely to Developer (and not to Multiplan Brazil and/or any of its affiliates) with respect to any and all matters relating to the marketing and/or development of the Condominium and with respect to the sales of units in the Condominium. Stated square footages and dimensions are measured to the exterior boundaries of the exterior walls and the centerline of interior demising walls and in fact vary from the square footage and dimensions that would be determined by using the description and definition of the "Unit" set forth in the Declaration (which generally only includes the interior airspace between the perimeter walls and excludes all interior structural components and other common elements).



ORAL REPRESENTATIONS CANNOT BE RELIED UPON AS CORRECTLY STATING THE REPRESENTATIONS OF THE DEVELOPER. FOR CORRECT REPRESENTATIONS, REFERENCE SHOULD BE MADE TO THE DOCUMENTS REQUIRED BY SECTION 718.503, FLORIDA STATUTES, TO BE FURNISHED BY A DEVELOPER TO A BUYER OR LESSEE. These materials are not intended to be an offer to sell, or solicitation to buy a unit in the condominium.



OCEAN PARK

SOUTH BEACH

Penthouse 01

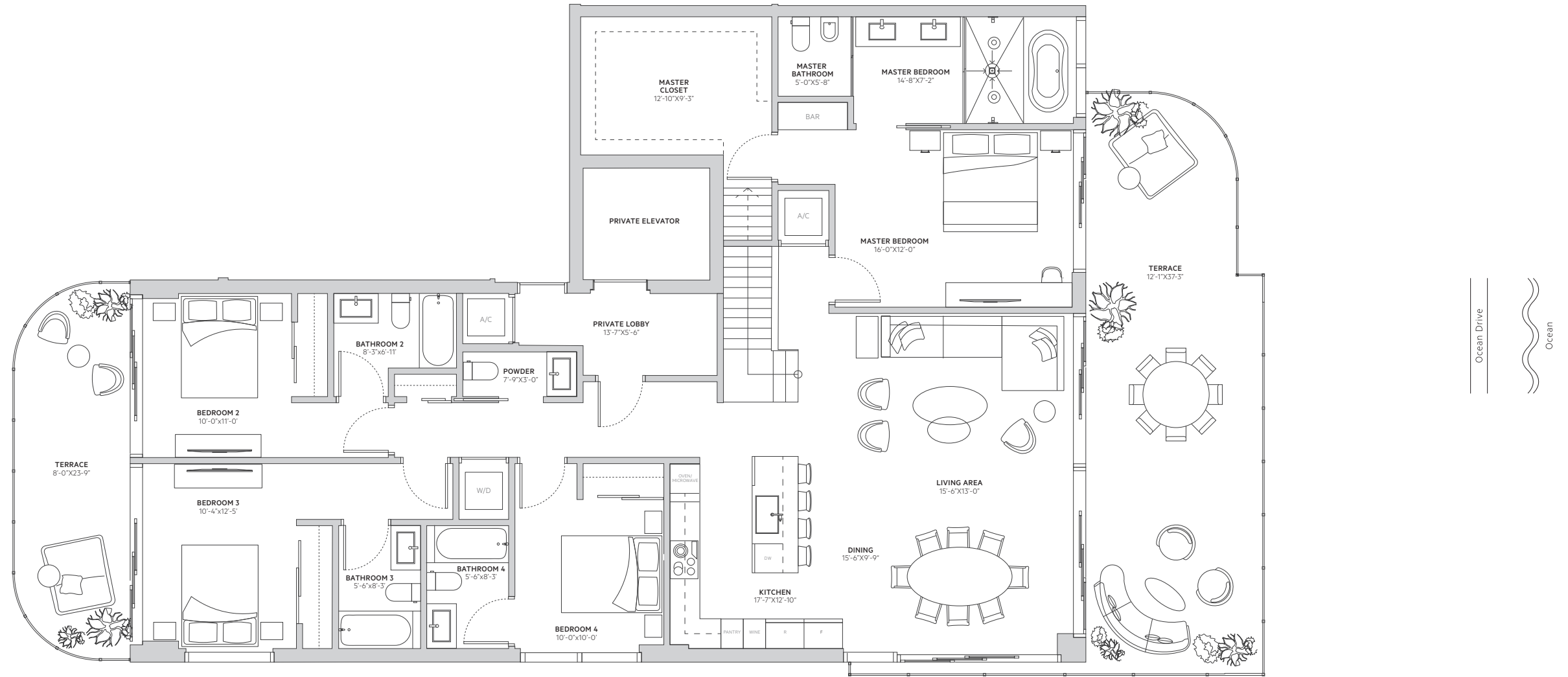
Fourth Level

4 Bedrooms
 4.5 Bathrooms
 Private Terraces
 Rooftop 1/2 Bath
 Pool & Summer Kitchen

Interior
 2,393 SQ FT | 222.3 SQ M

Exterior
 2,224 SQ FT | 206.6 SQ M

Total
4,617 SQ FT | 428.9 SQ M



These materials are not intended to be an offer to sell, or solicitation to buy a unit in the condominium. Such an offering shall only be made pursuant to the prospectus(offering circular) for the condominium and no statements should be relied upon unless made in the prospectus or in the applicable purchase agreement. Multiplan Real Estate Asset Management ("Multiplan REAM") is not the project Developer. This Condominium is being developed by 312 Ocean Park, LLC, a Florida limited liability company, which has a limited right to use the trademarked names and logos of Multiplan REAM. Any and all statements, disclosures and/or representations shall be deemed made by the Developer and not by Multiplan REAM and you agree to look solely to Developer (and not to Multiplan REAM and/or any of its affiliates) with respect to any and all matters relating to the marketing and/or development of the Condominium and with respect to the sales of units in the Condominium. Additionally, Multiplan Empreendimentos Imobiliarios ("Multiplan Brazil") is not related to, or an affiliate of, Multiplan REAM or the Developer. Any and all statements, disclosures and/or representations shall be deemed made by the Developer and not by Multiplan Brazil and you agree to look solely to Developer (and not to Multiplan Brazil and/or any of its affiliates) with respect to any and all matters relating to the marketing and/or development of the Condominium and with respect to the sales of units in the Condominium. Stated square footages and dimensions are measured to the exterior boundaries of the exterior walls and the centerline of interior demising walls and in fact vary from the square footage and dimensions that would be determined by using the description and definition of the "Unit" set forth in the Declaration (which generally only includes the interior airspace between the perimeter walls and excludes all interior structural components and other common elements).



ORAL REPRESENTATIONS CANNOT BE RELIED UPON AS CORRECTLY STATING THE REPRESENTATIONS OF THE DEVELOPER. FOR CORRECT REPRESENTATIONS, REFERENCE SHOULD BE MADE TO THE DOCUMENTS REQUIRED BY SECTION 718.503, FLORIDA STATUTES, TO BE FURNISHED BY A DEVELOPER TO A BUYER OR LESSEE. These materials are not intended to be an offer to sell, or solicitation to buy a unit in the condominium.



OCEAN PARK

SOUTH BEACH

Penthouse 01

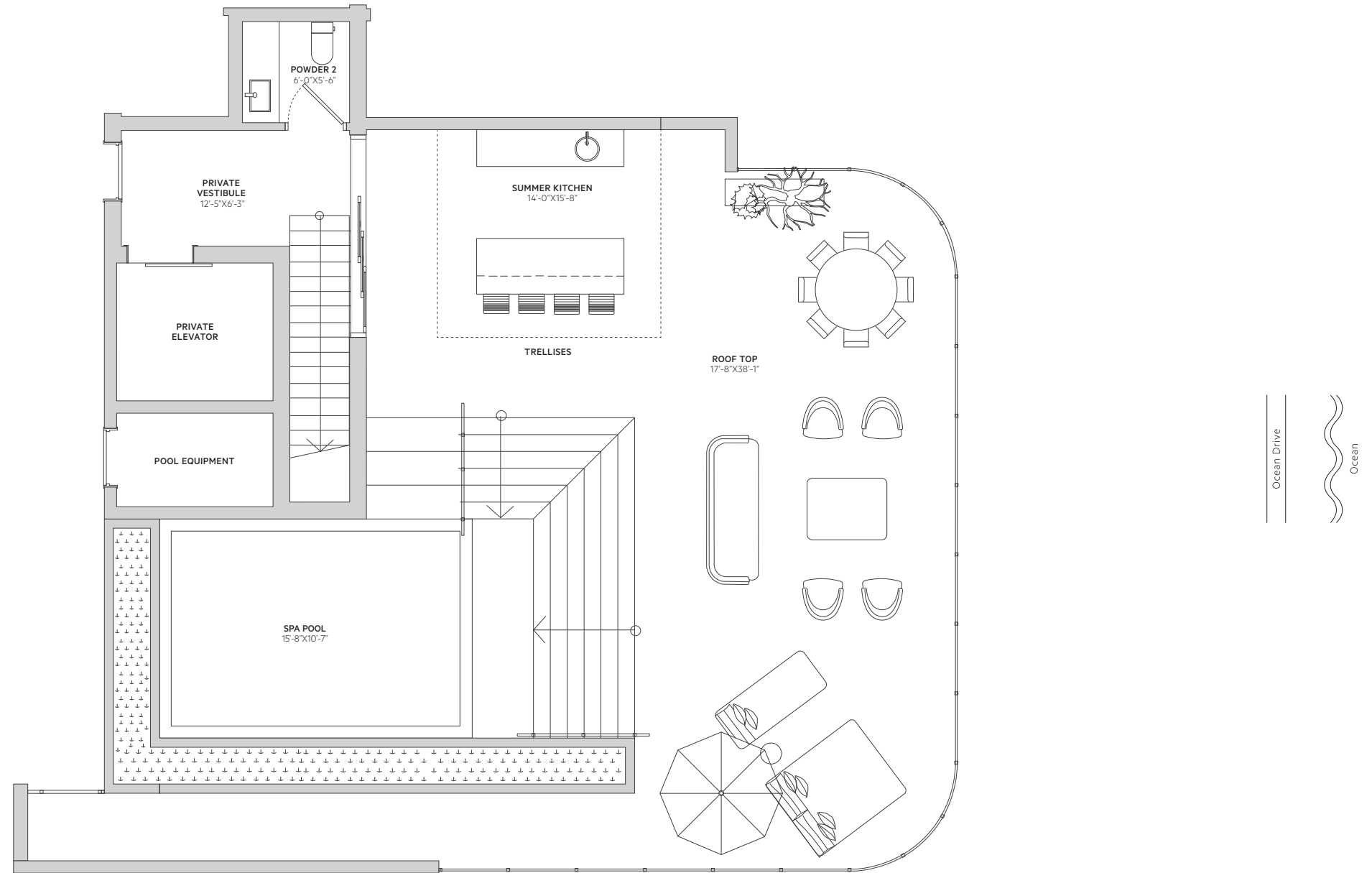
Private Terrace

- 4 Bedrooms
- 4.5 Bathrooms
- Private Terraces
- Rooftop 1/2 Bath
- Pool & Summer Kitchen

Interior
2,393 SQ FT | 222.3 SQ M

Exterior
2,224 SQ FT | 206.6 SQ M

Total
4,617 SQ FT | 428.9 SQ M



These materials are not intended to be an offer to sell, or solicitation to buy a unit in the condominium. Such an offering shall only be made pursuant to the prospectus(offering circular) for the condominium and no statements should be relied upon unless made in the prospectus or in the applicable purchase agreement. Multiplan Real Estate Asset Management ("Multiplan REAM") is not the project Developer. This Condominium is being developed by 312 Ocean Park, LLC, a Florida limited liability company, which has a limited right to use the trademarked names and logos of Multiplan REAM. Any and all statements, disclosures and/or representations shall be deemed made by the Developer and not by Multiplan REAM and you agree to look solely to Developer (and not to Multiplan REAM and/or any of its affiliates) with respect to any and all matters relating to the marketing and/or development of the Condominium and with respect to the sales of units in the Condominium. Additionally, Multiplan Empreendimentos Imobiliarios ("Multiplan Brazil") is not related to, or an affiliate of, Multiplan REAM or the Developer. Any and all statements, disclosures and/or representations shall be deemed made by the Developer and not by Multiplan Brazil and you agree to look solely to Developer (and not to Multiplan Brazil and/or any of its affiliates) with respect to any and all matters relating to the marketing and/or development of the Condominium and with respect to the sales of units in the Condominium. Stated square footages and dimensions are measured to the exterior boundaries of the exterior walls and the centerline of interior demising walls and in fact vary from the square footage and dimensions that would be determined by using the description and definition of the "Unit" set forth in the Declaration (which generally only includes the interior airspace between the perimeter walls and excludes all interior structural components and other common elements).



ORAL REPRESENTATIONS CANNOT BE RELIED UPON AS CORRECTLY STATING THE REPRESENTATIONS OF THE DEVELOPER. FOR CORRECT REPRESENTATIONS, REFERENCE SHOULD BE MADE TO THE DOCUMENTS REQUIRED BY SECTION 718.503, FLORIDA STATUTES, TO BE FURNISHED BY A DEVELOPER TO A BUYER OR LESSEE. These materials are not intended to be an offer to sell, or solicitation to buy a unit in the condominium.



OCEAN PARK

SOUTH BEACH

Penthouse 02

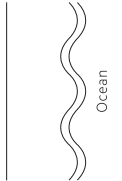
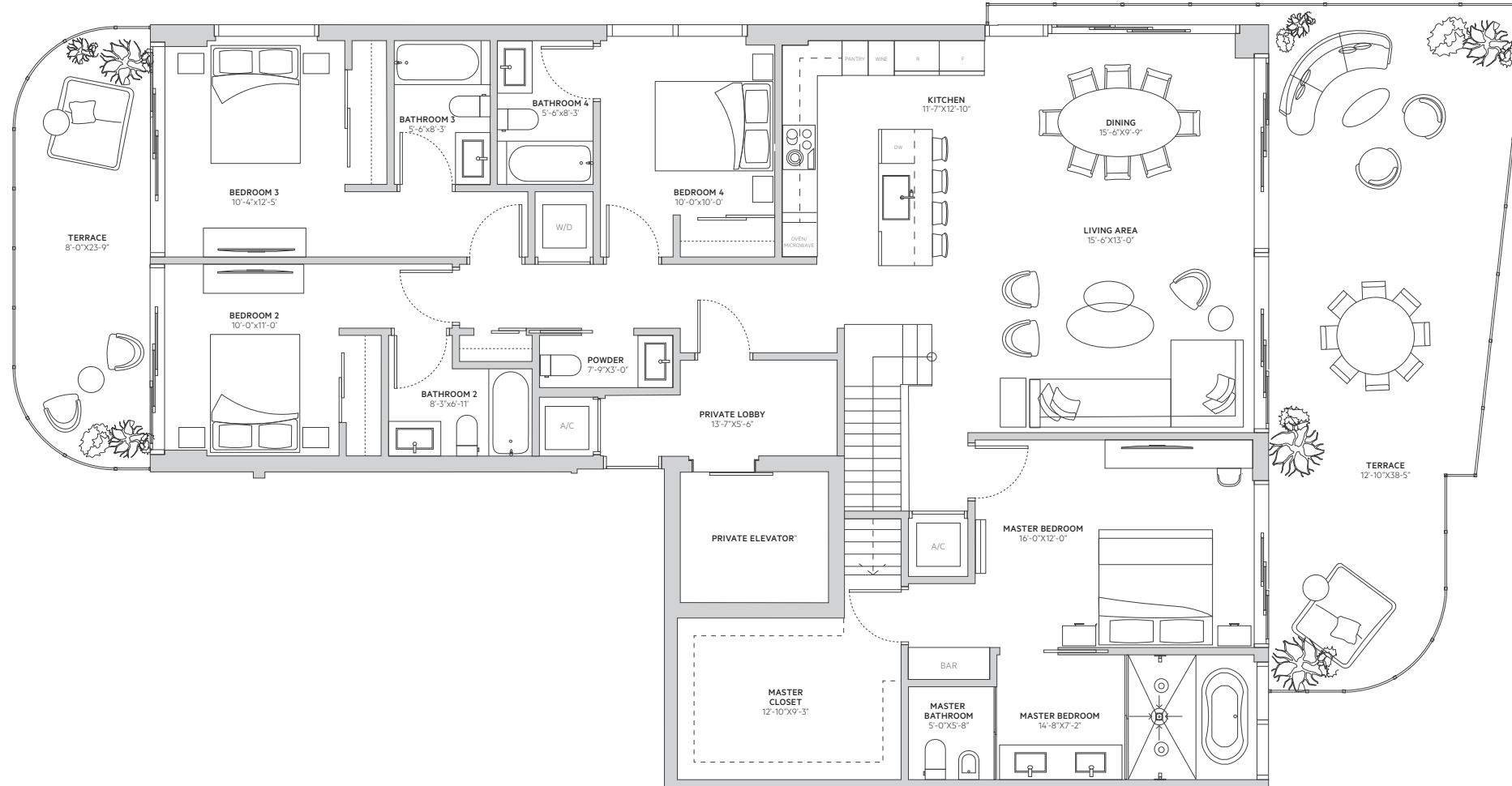
Fourth Level

- 4 Bedrooms
- 4.5 Bathrooms
- Private Terraces
- Rooftop 1/2 Bath
- Pool & Summer Kitchen

Interior
2,393 SQ FT | 222.3 SQ M

Exterior
2,269 SQ FT | 210.8 SQ M

Total
4,662 SQ FT | 433.1 SQ M



These materials are not intended to be an offer to sell, or solicitation to buy a unit in the condominium. Such an offering shall only be made pursuant to the prospectus(offering circular) for the condominium and no statements should be relied upon unless made in the prospectus or in the applicable purchase agreement. Multiplan Real Estate Asset Management ("Multiplan REAM") is not the project Developer. This Condominium is being developed by 312 Ocean Park, LLC, a Florida limited liability company, which has a limited right to use the trademarked names and logos of Multiplan REAM. Any and all statements, disclosures and/or representations shall be deemed made by the Developer and not by Multiplan REAM and you agree to look solely to Developer (and not to Multiplan REAM and/or any of its affiliates) with respect to any and all matters relating to the marketing and/or development of the Condominium and with respect to the sales of units in the Condominium. Additionally, Multiplan Empreendimentos Imobiliarios ("Multiplan Brazil") is not related to, or an affiliate of, Multiplan REAM or the Developer. Any and all statements, disclosures and/or representations shall be deemed made by the Developer and not by Multiplan Brazil and you agree to look solely to Developer (and not to Multiplan Brazil and/or any of its affiliates) with respect to any and all matters relating to the marketing and/or development of the Condominium and with respect to the sales of units in the Condominium. Stated square footages and dimensions are measured to the exterior boundaries of the exterior walls and the centerline of interior demising walls and in fact vary from the square footage and dimensions that would be determined by using the description and definition of the "Unit" set forth in the Declaration (which generally only includes the interior airspace between the perimeter walls and excludes all interior structural components and other common elements).



ORAL REPRESENTATIONS CANNOT BE RELIED UPON AS CORRECTLY STATING THE REPRESENTATIONS OF THE DEVELOPER. FOR CORRECT REPRESENTATIONS, REFERENCE SHOULD BE MADE TO THE DOCUMENTS REQUIRED BY SECTION 718.503, FLORIDA STATUTES, TO BE FURNISHED BY A DEVELOPER TO A BUYER OR LESSEE. These materials are not intended to be an offer to sell, or solicitation to buy a unit in the condominium.



OCEAN PARK

SOUTH BEACH

Penthouse 02

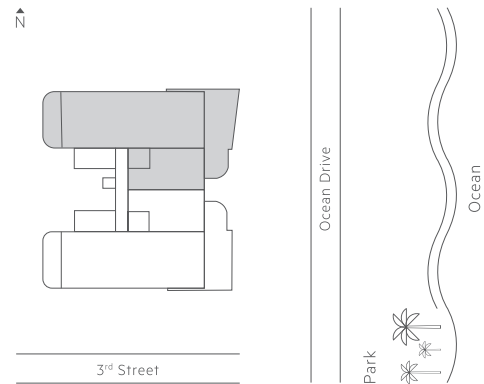
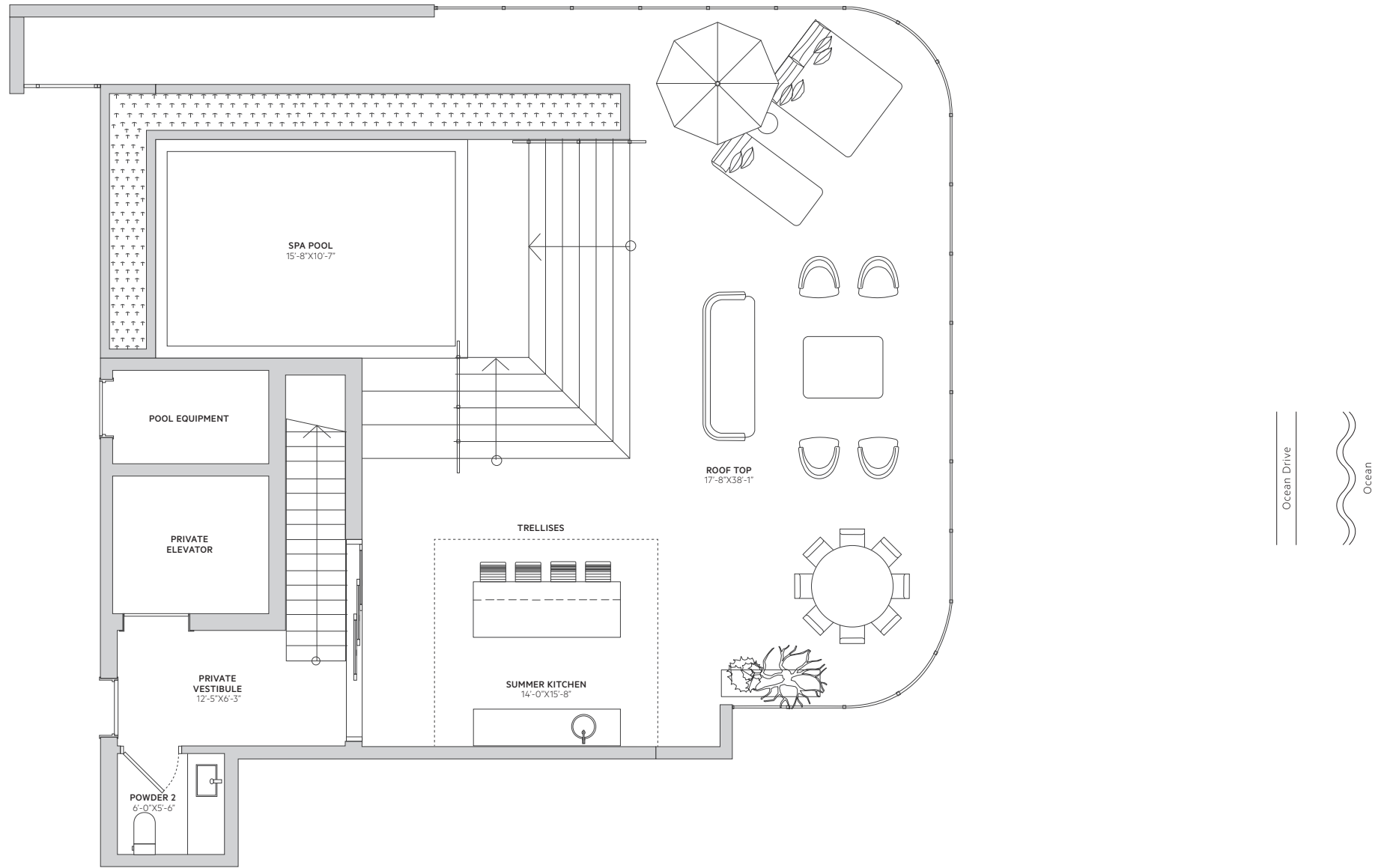
Private Terrace

- 4 Bedrooms
- 4.5 Bathrooms
- Private Terraces
- Rooftop 1/2 Bath
- Pool & Summer Kitchen

Interior
2,393 SQ FT | 222.3 SQ M

Exterior
2,269 SQ FT | 210.8 SQ M

Total
4,662 SQ FT | 433.1 SQ M



3rd Street

These materials are not intended to be an offer to sell, or solicitation to buy a unit in the condominium. Such an offering shall only be made pursuant to the prospectus(offering circular) for the condominium and no statements should be relied upon unless made in the prospectus or in the applicable purchase agreement. Multiplan Real Estate Asset Management ("Multiplan REAM") is not the project Developer. This Condominium is being developed by 312 Ocean Park, LLC, a Florida limited liability company, which has a limited right to use the trademarked names and logos of Multiplan REAM. Any and all statements, disclosures and/or representations shall be deemed made by the Developer and not by Multiplan REAM and you agree to look solely to Developer (and not to Multiplan REAM and/or any of its affiliates) with respect to any and all matters relating to the marketing and/or development of the Condominium and with respect to the sales of units in the Condominium. Additionally, Multiplan Empreendimentos Imobiliarios ("Multiplan Brazil") is not related to, or an affiliate of, Multiplan REAM or the Developer. Any and all statements, disclosures and/or representations shall be deemed made by the Developer and not by Multiplan Brazil and you agree to look solely to Developer (and not to Multiplan Brazil and/or any of its affiliates) with respect to any and all matters relating to the marketing and/or development of the Condominium and with respect to the sales of units in the Condominium. Stated square footages and dimensions are measured to the exterior boundaries of the exterior walls and the centerline of interior demising walls and in fact vary from the square footage and dimensions that would be determined by using the description and definition of the "Unit" set forth in the Declaration (which generally only includes the interior airspace between the perimeter walls and excludes all interior structural components and other common elements).



ORAL REPRESENTATIONS CANNOT BE RELIED UPON AS CORRECTLY STATING THE REPRESENTATIONS OF THE DEVELOPER. FOR CORRECT REPRESENTATIONS, REFERENCE SHOULD BE MADE TO THE DOCUMENTS REQUIRED BY SECTION 718.503, FLORIDA STATUTES, TO BE FURNISHED BY A DEVELOPER TO A BUYER OR LESSEE. These materials are not intended to be an offer to sell, or solicitation to buy a unit in the condominium.

