

BISCAYNE BEACH

East Edgewater · Miami Residences



THE BEACH JUST GOT CLOSER



ORAL REPRESENTATIONS CANNOT BE RELIED UPON AS CORRECTLY STATING THE REPRESENTATIONS OF THE DEVELOPER. FOR CORRECT REPRESENTATIONS, MAKE REFERENCE TO THIS BROCHURE AND TO THE DOCUMENTS REQUIRED BY SECTION 718.503, FLORIDA STATUTES, TO BE FURNISHED BY A DEVELOPER TO A BUYER OR LESSEE. OBTAIN THE PROPERTY REPORT REQUIRED BY FEDERAL LAW AND READ IT BEFORE SIGNING ANYTHING. NO FEDERAL AGENCY HAS JUDGED THE MERITS OR VALUE, IF ANY, OF THIS PROPERTY.



SEE DISCLAIMERS ON FINAL PAGE . RENDERINGS DEPICT PROPOSED VIEWS, WHICH ARE NOT IDENTICAL FROM EACH UNIT. ALL IMAGES DEPICTED HEREIN ARE ARTIST'S CONCEPTUAL RENDERINGS, WHICH ARE BASED UPON PRELIMINARY DEVELOPMENT PLANS, AND ARE SUBJECT TO CHANGE WITHOUT NOTICE IN THE MANNER PROVIDED IN THE OFFERING DOCUMENTS. NO GUARANTEES OR REPRESENTATIONS WHATSOEVER ARE MADE THAT EXISTING OR FUTURE VIEWS OF THE PROJECT AND SURROUNDING AREAS, OR ANY OTHER FEATURES, AMENITIES OR FACILITIES DEPICTED BY ANY SUCH ARTIST'S CONCEPTUAL RENDERINGS OR OTHERWISE DESCRIBED HEREIN, WILL BE PROVIDED OR, IF PROVIDED, WILL BE OF THE SAME TYPE, SIZE, LOCATION OR NATURE AS DEPICTED OR DESCRIBED HEREIN.

WHO SAID
SAND CASTLES
CAN'T BE
SKYSCRAPERS?



DESCRIPTION

Biscayne Beach is a 399-unit luxury condominium tower being developed by a joint venture between Eastview Development and GTIS Partners in Miami's East Edgewater neighborhood. Upon completion in 2016, the 51 story high-rise, directly on the water, "Brings the beach to the city," boasting Miami's newest beach club on the Bay.

RESIDENCES

Biscayne Beach will offer 399 luxury residences, ranging from one- to four-bedroom layouts with den options as well as exclusive penthouses with private rooftop garden terraces. All units will include floor-to-ceiling glass windows, oversized balconies, and will boast sweeping views of Biscayne Bay, Miami Beach and the city skyline.

TIMETABLE

Construction will get underway in the first quarter of 2014 and is slated for completion in 2016.

PRICE RANGE

Preconstruction prices range from the \$400,000's to multi-million dollar penthouses.



SEE DISCLAIMERS ON FINAL PAGE.

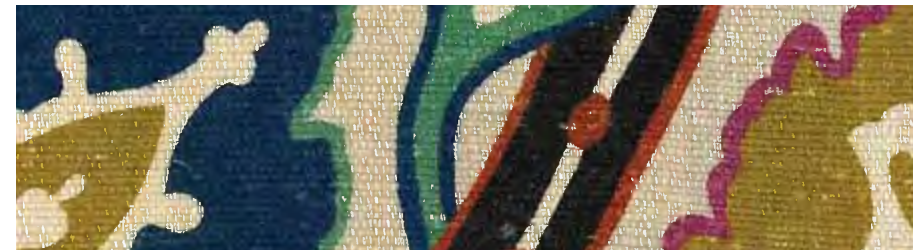
INTERIOR DESIGN
Thom Filicia, Inc.



Internationally acclaimed celebrity interior designer Thom Filicia's firm **Thom Filicia, Inc.** is the Biscayne Beach design partner. Dubbed an "**A-List Designer**" by **Elle Décor** and named one of the "**Top 100 Designers**" by **House Beautiful**, Filicia has designed properties for numerous celebrities including **Tina Fey, Peter Jennings, Jennifer Lopez** and **Marc Anthony**. He has also been the creative mastermind behind several **W Hotels** and high-profile special projects such as the VIP Suite for the **USA Pavilion** at the World's Fair in Aichi, Japan, the first-ever outdoor lounges for **Delta Air Lines** at the Hartsfield-Jackson International Airport in Atlanta and JFK in New York City, and Manhattan's first premium (LEED certified) "green" luxury condominium tower. Filicia's recognition expanded beyond the design world when he was cast in the **Emmy-Award winning** hit show **Queer Eye for the Straight Guy**. Filicia will bring his sophisticated classic style with an unexpected twist to the aesthetic and sensibility of Biscayne Beach. Learn more at www.thomfilicia.com.



THOM FILICIA
Design Lifestyle Interiors



"The aesthetic of Biscayne Beach is smart. It's contemporary and fresh, yet timeless and classic."

It's very important for me to design something iconic, that celebrates all that Miami has to offer – to set a new standard of what's next. Biscayne Beach speaks to the way people are living right now and how they want to live moving forward."

- Thom Filicia

SEE DISCLAIMERS ON FINAL PAGE.



SEE DISCLAIMERS ON FINAL PAGE . RENDERINGS DEPICT PROPOSED VIEWS, WHICH ARE NOT IDENTICAL FROM EACH UNIT. ALL IMAGES DEPICTED HEREIN ARE ARTIST'S CONCEPTUAL RENDERINGS, WHICH ARE BASED UPON PRELIMINARY DEVELOPMENT PLANS, AND ARE SUBJECT TO CHANGE WITHOUT NOTICE IN THE MANNER PROVIDED IN THE OFFERING DOCUMENTS. NO GUARANTEES OR REPRESENTATIONS WHATSOEVER ARE MADE THAT EXISTING OR FUTURE VIEWS OF THE PROJECT AND SURROUNDING AREAS, OR ANY OTHER FEATURES, AMENITIES OR FACILITIES DEPICTED BY ANY SUCH ARTIST'S CONCEPTUAL RENDERINGS OR OTHERWISE DESCRIBED HEREIN, WILL BE PROVIDED OR, IF PROVIDED, WILL BE OF THE SAME TYPE, SIZE, LOCATION OR NATURE AS DEPICTED OR DESCRIBED HEREIN.

A NEW WAVE OF LUXURY







SEE DISCLAIMERS ON FINAL PAGE.

AMENITIES

Resident's Club Level

- 2 tennis courts
- Basketball court
- Residence park
- Great Room including library, theater, and pool tables

Residence Features

- Floor plans ranging from 885 to 3789 SF
- One- to four-bedroom layouts with den options
- 6 floors of penthouse residences featuring large terraces and outdoor summer kitchens
- Exclusive upper penthouse residences feature private rooftop garden terraces and vaulted ceilings
- 4 Owner Guest Suites available for rent
- All residences feature both sweeping beach, Bay and city views
- Floor-to-ceiling impact glass windows and doors with oversized balconies





AMENITIES

Beach Club Level

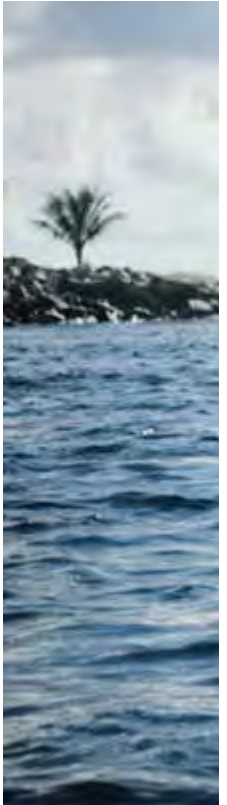
- 335 linear feet of land directly on the water
- Miami's newest Beach Club on the Bay
- Zero entry Biscayne Beach Club pool
- 6 private residence pools
- Internationally renowned restaurant
- Biscayne Beach Club bar
- Beach cabanas & lounge areas
- Cabana / towel service
- Water sports storage
- Jet skis, paddle boards, kayaks, rafts, & snorkeling equipment available
- Swimming pier and dock

Lobby Level

- Private entrance for residents & Beach Club members
- Indoor / outdoor Club bar
- Separate restaurant entrance
- Secured covered parking
- Valet service
- Owners club including fitness center / spa
- Beauty center

CITY LIFE.
BEACH LIFE.

Situated in Miami's dynamic Edgewater East district, Biscayne Beach is the perfect choice for those who seek urban sophistication and waterfront pleasures. With its ultra-luxury style and private, downtown beach club, Biscayne Beach feature cinematic views of the bay and city skyline, spacious layouts, and distinctive appointments.



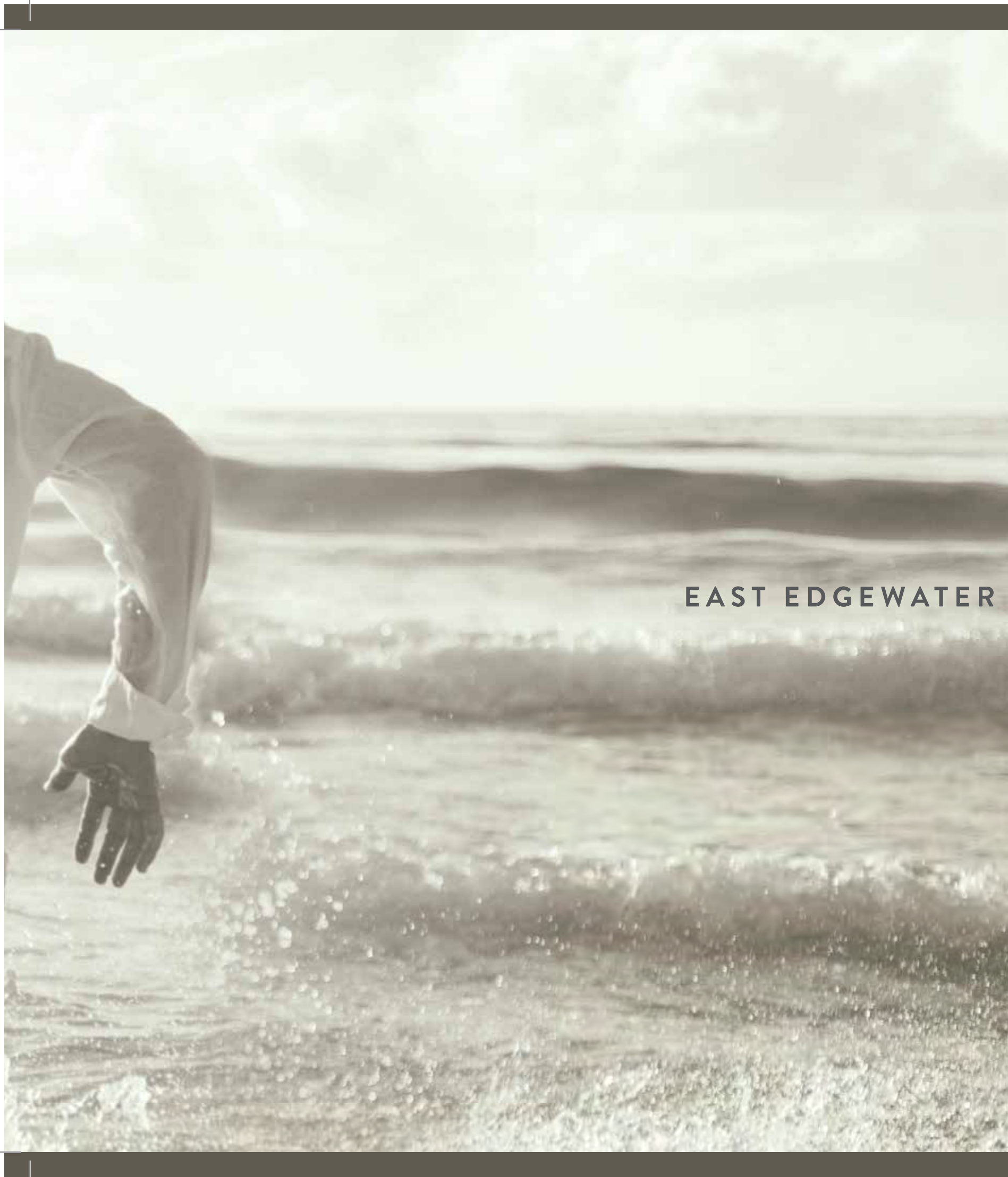


SEE DISCLAIMERS ON FINAL PAGE.

THE BEST OF BOTH
in East Edgewater.



SEE DISCLAIMERS ON FINAL PAGE.

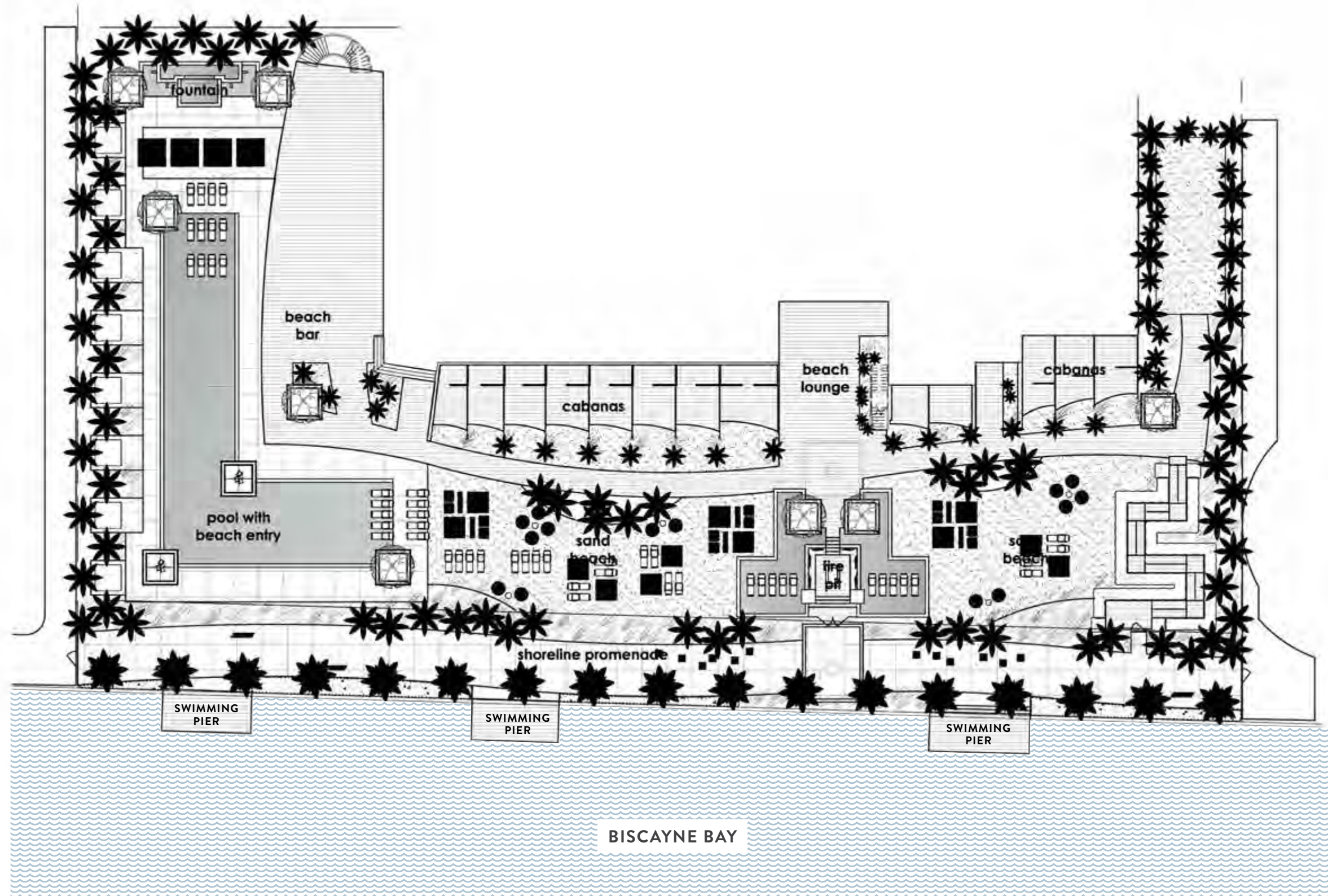


EAST EDGEWATER MEETS EVERYTHING



SEE DISCLAIMERS ON FINAL PAGE



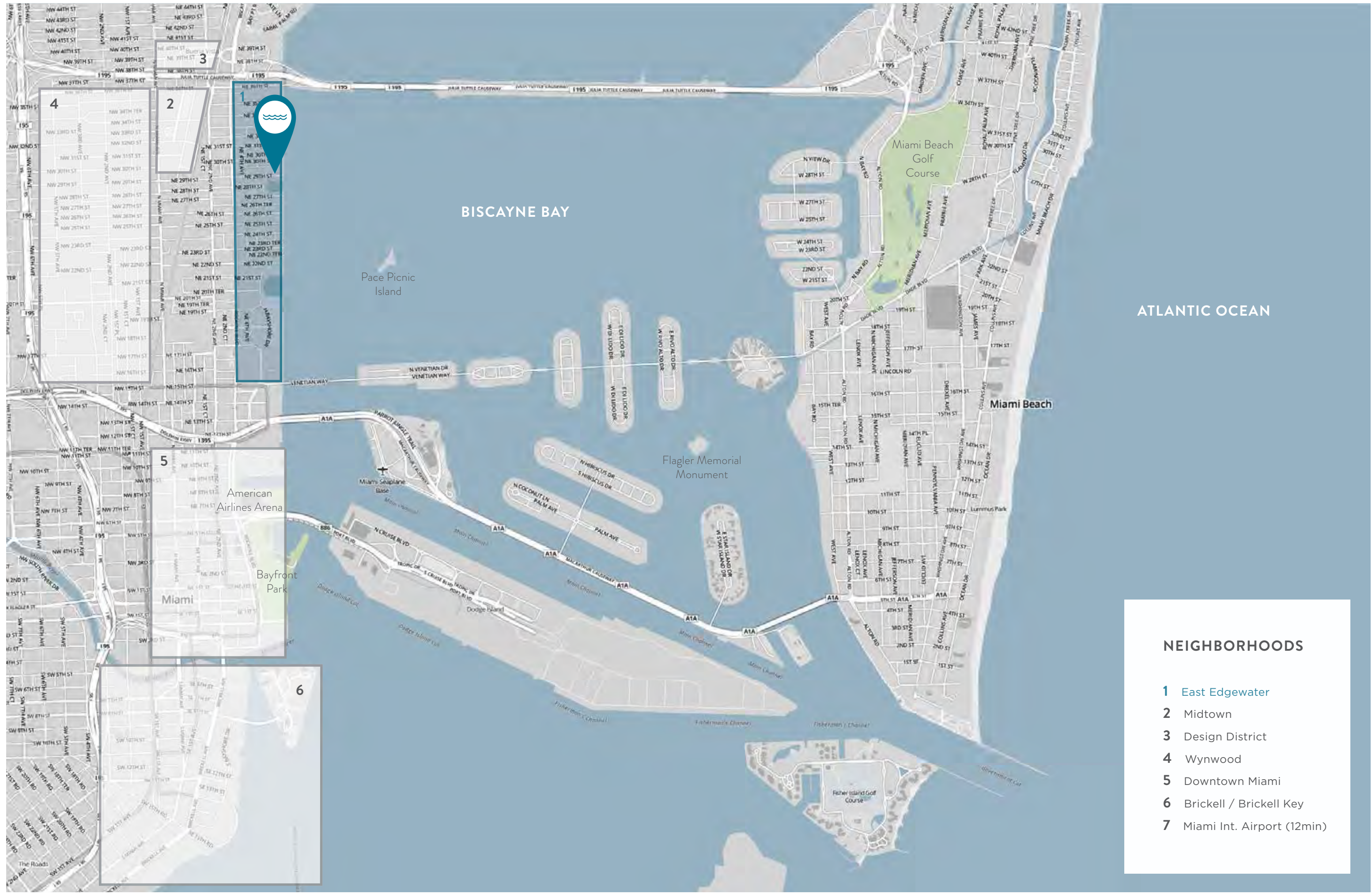




THE VIEW THE BEACH THE CITY **THE PLACE TO BE**

Situated in the heart of the City's urban core, Biscayne Beach is located at 701 NE 29th Street along Biscayne Bay in the fast-growing neighborhood of East Edgewater – conveniently situated with the Venetian Causeway to the South, the Julia Tuttle Causeway to the North, Biscayne Bay and the Beaches to the East, and Biscayne Boulevard to the West. This fast-growing neighborhood is at the center of numerous recreational and lifestyle destinations, including the luxury shops of the Design District, the Downtown Arts and Entertainment District (the Adrienne Arsht Center for the Performing Arts, Museum Park, etc.), the Wynwood Arts District, and the shops and restaurants of Midtown.





BISCAYNE BAY

Pace Picnic Island

Miami Beach Golf Course

ATLANTIC OCEAN

Miami Beach

Flagler Memorial Monument

American Airlines Arena

Bayfront Park

Miami

Fisher Island Golf Course

NEIGHBORHOODS

- 1 East Edgewater
- 2 Midtown
- 3 Design District
- 4 Wynwood
- 5 Downtown Miami
- 6 Brickell / Brickell Key
- 7 Miami Int. Airport (12min)

DEVELOPER

Eastview Development / GTIS Partners

Biscayne Beach is a collaboration between Florida-based developer Eastview Development and global real estate investment firm GTIS Partners. Eastview's principals combined have over 120 years of experience in developing, financing and marketing residential and commercial real estate projects across the United States. Headquartered in New York, GTIS currently manages approximately **\$2.3 billion** of committed equity with 39 residential projects across 11 states in the United States. Learn more at www.gtispartners.com and www.eastviewdev.com.



CONTRACTOR

Moss Construction Management

Fort Lauderdale-based Moss Construction Management provides design-build, general construction, construction management and preconstruction services for commercial, industrial, manufacturing, residential and institutional facilities developed throughout the United States, Bahamas and the Caribbean. Learn more at www.mosscm.com.



ARCHITECTS

WHLC Architecture / BCArchitects

Biscayne Beach architecture partner WHLC Architecture brings **award-winning expertise in programming, planning, and design**. With offices in Louisiana, Mississippi, and Alabama; WHLC is one of the most prominent, full-service firms in the Gulf South. Local partner BCArchitects is a residential architectural firm with experience designing **30 condominium projects** across Florida, including the **Diplomat Ocean Residences** in Hollywood, **Oceania Island** in Sunny Isles, and **Porsche Residences** in Sunny Isles. Learn more at www.whlarchitecture.com and www.bcarchitects.com.

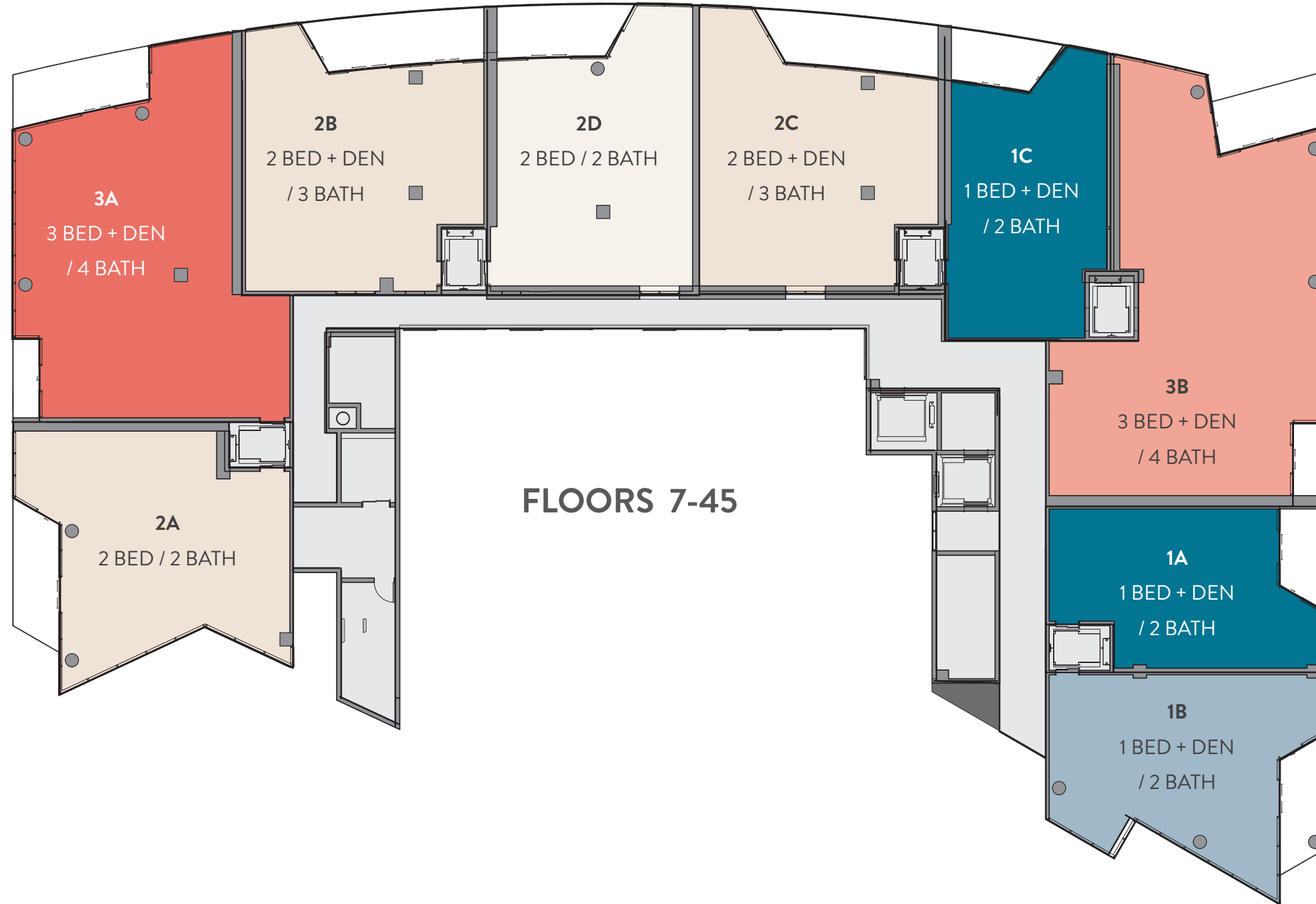


SEE DISCLAIMERS ON FINAL PAGE.

BISCAYNE BAY

RESIDENCE
SITE KEY

BEACH CLUB



BISCAYNE BEACH

East Edgewater · Miami Residences

STATED SQUARE FOOTAGES AND DIMENSIONS ARE MEASURED TO THE EXTERIOR BOUNDARIES OF THE EXTERIOR WALLS AND THE CENTERLINE OF INTERIOR DEMISING WALLS AND IN FACT VARY FROM THE DIMENSIONS THAT WOULD BE DETERMINED BY USING THE DESCRIPTION AND DEFINITION OF THE "UNIT" SET FORTH IN THE DECLARATION (WHICH GENERALLY ONLY INCLUDES THE INTERIOR AIRSPACE BETWEEN THE PERIMETER WALLS AND EXCLUDES ALL INTERIOR STRUCTURAL COMPONENTS AND OTHER COMMON ELEMENTS). THIS METHOD IS GENERALLY USED IN SALES MATERIALS AND IS PROVIDED TO ALLOW A PROSPECTIVE BUYER TO COMPARE THE UNITS WITH UNITS IN OTHER CONDOMINIUM PROJECTS THAT UTILIZE THE SAME METHOD. FOR YOUR REFERENCE, THE AREA OF THE UNIT, DETERMINED IN ACCORDANCE WITH THESE DEFINED UNIT BOUNDARIES, IS SET FORTH ABOVE AND IS LABELED AS "AC" (TERRACES, ALTHOUGH INCLUDED IN THE TOTAL SQUARE FOOTAGE, ARE NOT PART OF THE UNIT). MEASUREMENTS OF ROOMS SET FORTH ON THIS FLOOR PLAN ARE GENERALLY TAKEN AT THE FARTHEST POINTS OF EACH GIVEN ROOM (AS IF THE ROOM WERE A PERFECT RECTANGLE), WITHOUT REGARD FOR ANY CUTOUTS OR VARIATIONS. ACCORDINGLY, THE AREA OF THE ACTUAL ROOM WILL TYPICALLY BE SMALLER THAN THE PRODUCT OBTAINED BY MULTIPLYING THE STATED LENGTH AND WIDTH. ALL DIMENSIONS ARE ESTIMATES WHICH WILL VARY WITH ACTUAL CONSTRUCTION, AND ALL FLOOR PLANS, SPECIFICATIONS AND OTHER DEVELOPMENT PLANS ARE PROPOSED AND CONCEPTUAL ONLY, WHICH ARE SUBJECT TO CHANGE AND WILL NOT NECESSARILY ACCURATELY REFLECT THE FINAL PLANS AND SPECIFICATIONS FOR THE DEVELOPMENT.

BISCAYNE BEACH

East Edgewater • Miami Residences



**Biscayne Beach Buyers Contact:
Steve Samuels | Oceanfront Realty
305.494.1767**

<https://condosandcondos.com/condos-for-sale/Miami/Biscayne-Beach#contact>