

FAENA HOUSE

RESIDENCES BY
FOSTER + PARTNERS

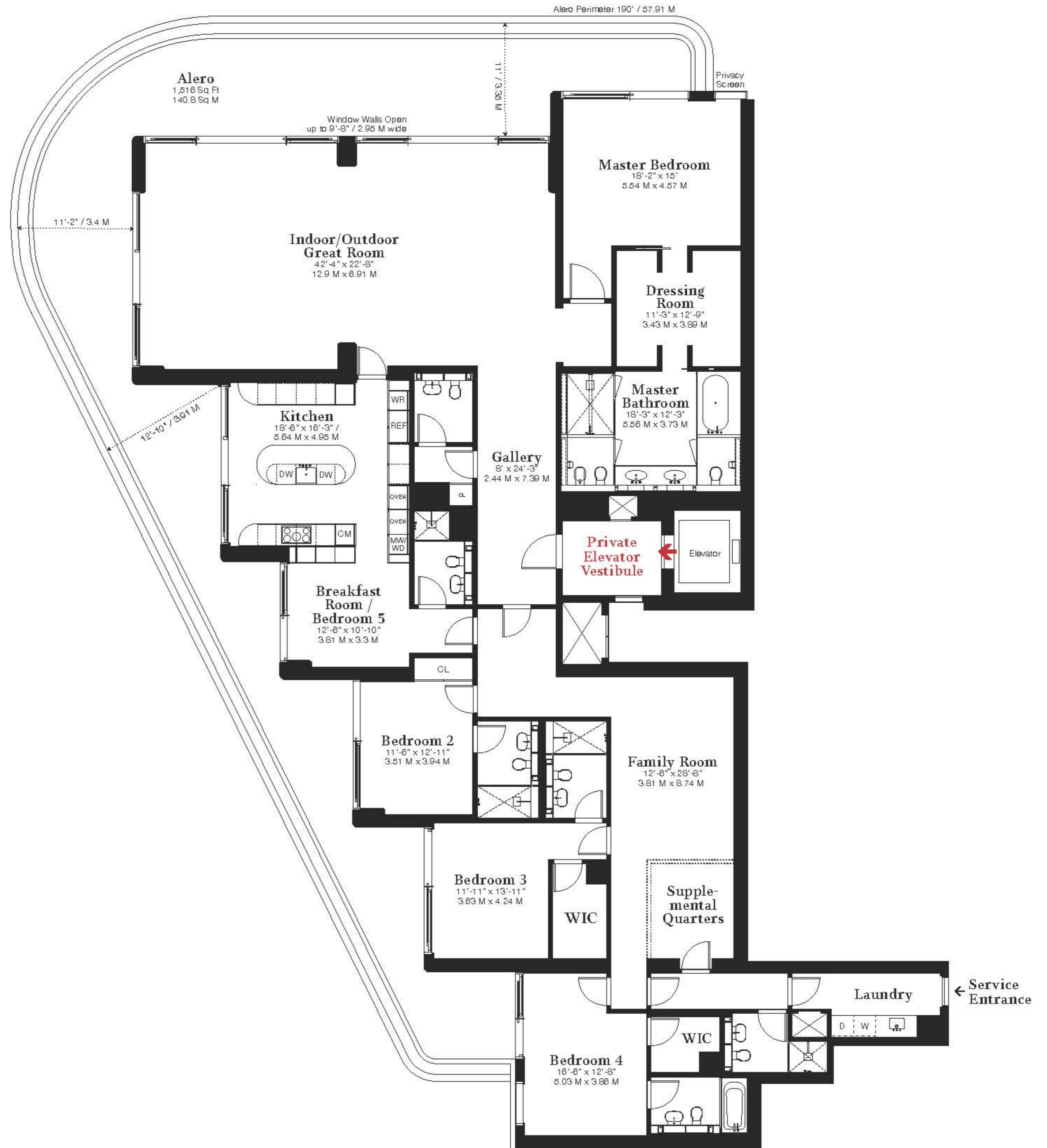
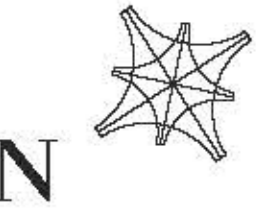
4-13A

4+ BEDROOMS / 6 BATHROOMS / 1 POWDER ROOM

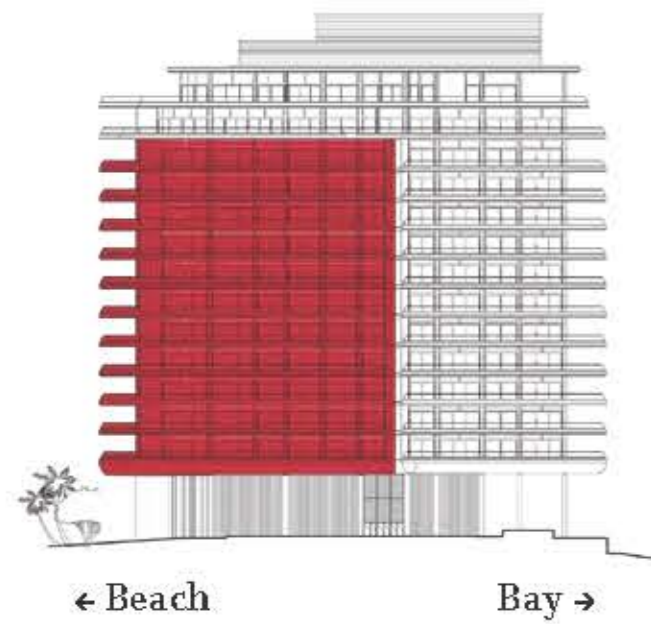
Total Living: 6,246 Sq Ft / 580.2 Sq M

Indoor: 4,730 Sq Ft / 439.4 Sq M

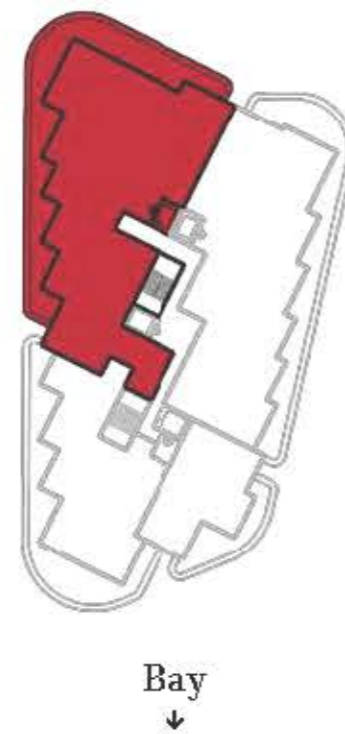
Alero: 1,516 Sq Ft / 140.8 Sq M



NORTH FACADE



Beach



This is not an offer to sell, or solicitation of offers to buy, the condominium units in states where such offer or solicitation cannot be made. This offering is made only by the offering documents for the condominium and no statement should be relied upon if not made in the offering documents. Stated dimensions are measured to the exterior boundaries of the exterior walls and the centerline of interior demising walls and in fact vary from the dimensions that would be determined by using the description and definition of the "Unit" set forth in the Declaration (which generally only includes the interior airspace between the perimeter walls and excludes interior structural components). For your reference, the area of the Unit, determined in accordance with those defined unit boundaries, is 4,275 sq ft. Note that measurements of rooms set forth on this floor plan are generally taken at the greatest points of each given room (as if the room were a perfect rectangle), without regard for any cutouts. Accordingly, the area of the actual room will typically be smaller than the product obtained by multiplying the stated length times width. All dimensions are approximate and may vary with actual construction, and all floor plans and development plans are subject to change.

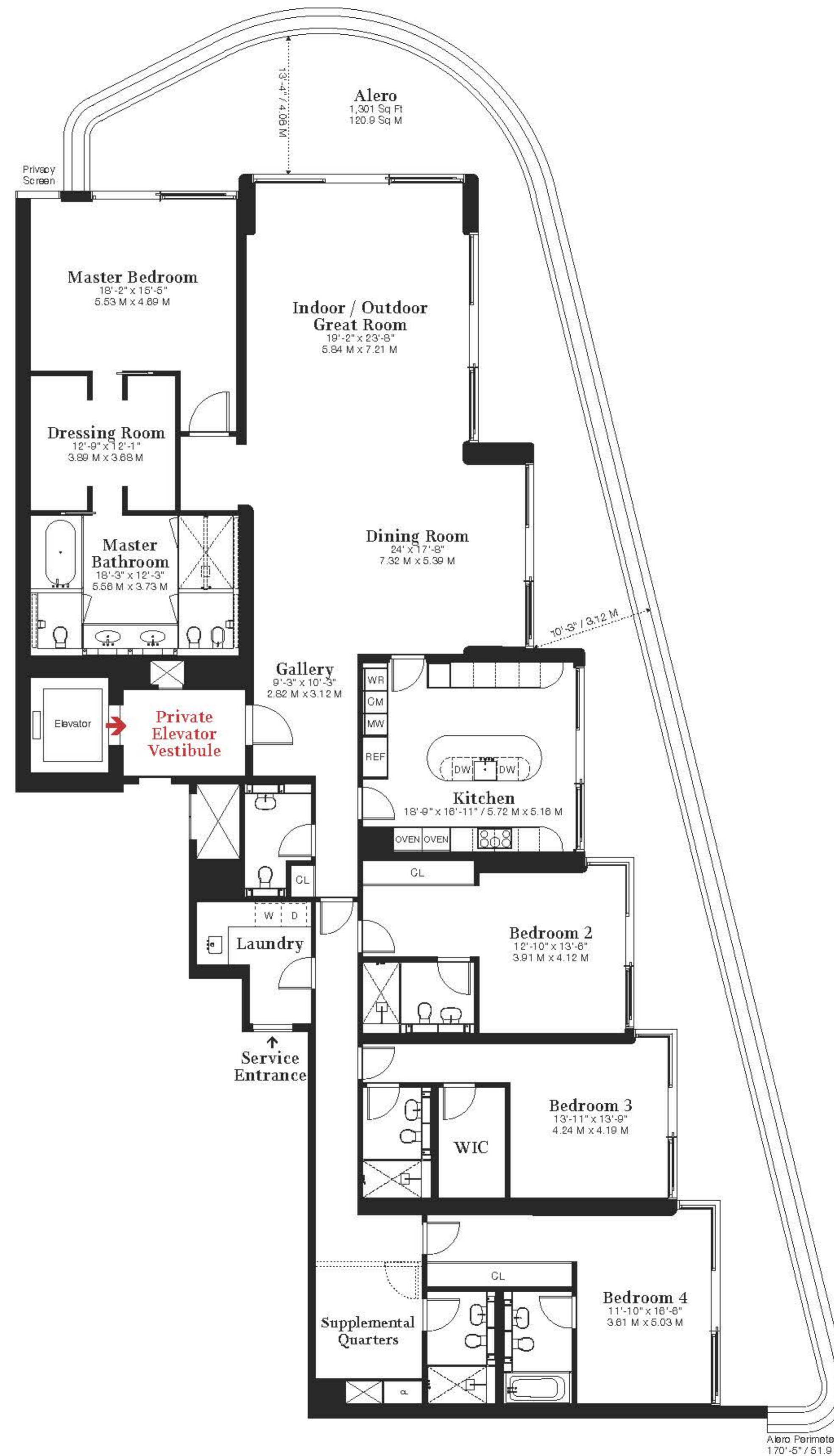
4-13B

4+ BEDROOMS / 5 BATHROOMS / 1 POWDER ROOM

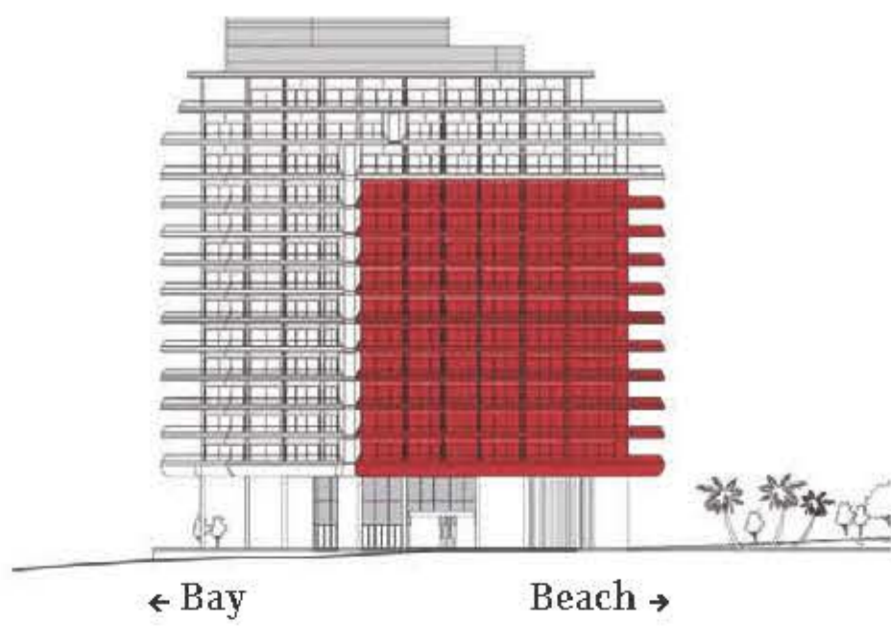
Total Living: 5,466 Sq Ft / 507.8 Sq M

Indoor: 4,165 Sq Ft / 386.9 Sq M

Alero: 1,301 Sq Ft / 120.9 Sq M



SOUTH FACADE



This is not an offer to sell, or solicitation of offers to buy, the condominium units in states where such offer or solicitation cannot be made. This offering is made only by the offering documents for the condominium and no statement should be relied upon if not made in the offering documents. Stated dimensions are measured to the exterior boundaries of the exterior walls and the centerline of interior demising walls and in fact vary from the dimensions that would be determined by using the description and definition of the "Unit" set forth in the Declaration (which generally only includes the interior airspace between the perimeter walls and excludes interior structural components). For your reference, the area of the Unit, determined in accordance with those defined unit boundaries, is 3,823 sq ft. Note that measurements of rooms set forth on this floor plan are generally taken at the greatest points of each given room (as if the room were a perfect rectangle), without regard for any cutouts. Accordingly, the area of the actual room will typically be smaller than the product obtained by multiplying the stated length times width. All dimensions are approximate and may vary with actual construction, and all floor plans and development plans are subject to change.



4-13C

2 BEDROOMS / 2 BATHROOMS / 1 POWDER ROOM

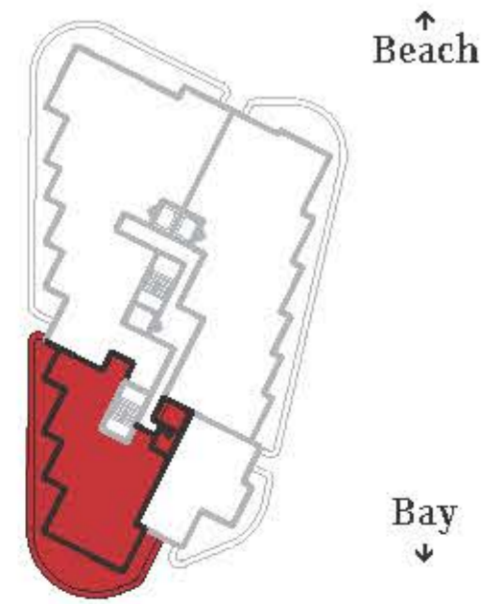
Total Living: 3,428 Sq Ft / 318.5 Sq M

Indoor: 2,238 Sq Ft / 207.9 Sq M

Alero: 1,190 Sq Ft / 110.6 Sq M



NORTH FACADE



This is not an offer to sell, or solicitation of offers to buy, the condominium units in states where such offer or solicitation cannot be made. This offering is made only by the offering documents for the condominium and no statement should be relied upon if not made in the offering documents. Stated dimensions are measured to the exterior boundaries of the exterior walls and the centerline of interior demising walls and in fact vary from the dimensions that would be determined by using the description and definition of the "Unit" set forth in the Declaration (which generally only includes the interior airspace between the perimeter walls and excludes interior structural components). For your reference, the area of the Unit, determined in accordance with those defined unit boundaries, is 2,063 sq ft. Note that measurements of rooms set forth on this floor plan are generally taken at the greatest points of each given room (as if the room were a perfect rectangle), without regard for any cutouts. Accordingly, the area of the actual room will typically be smaller than the product obtained by multiplying the stated length times width. All dimensions are approximate and may vary with actual construction, and all floor plans and development plans are subject to change.

FAENA HOUSE

RESIDENCES BY
FOSTER + PARTNERS



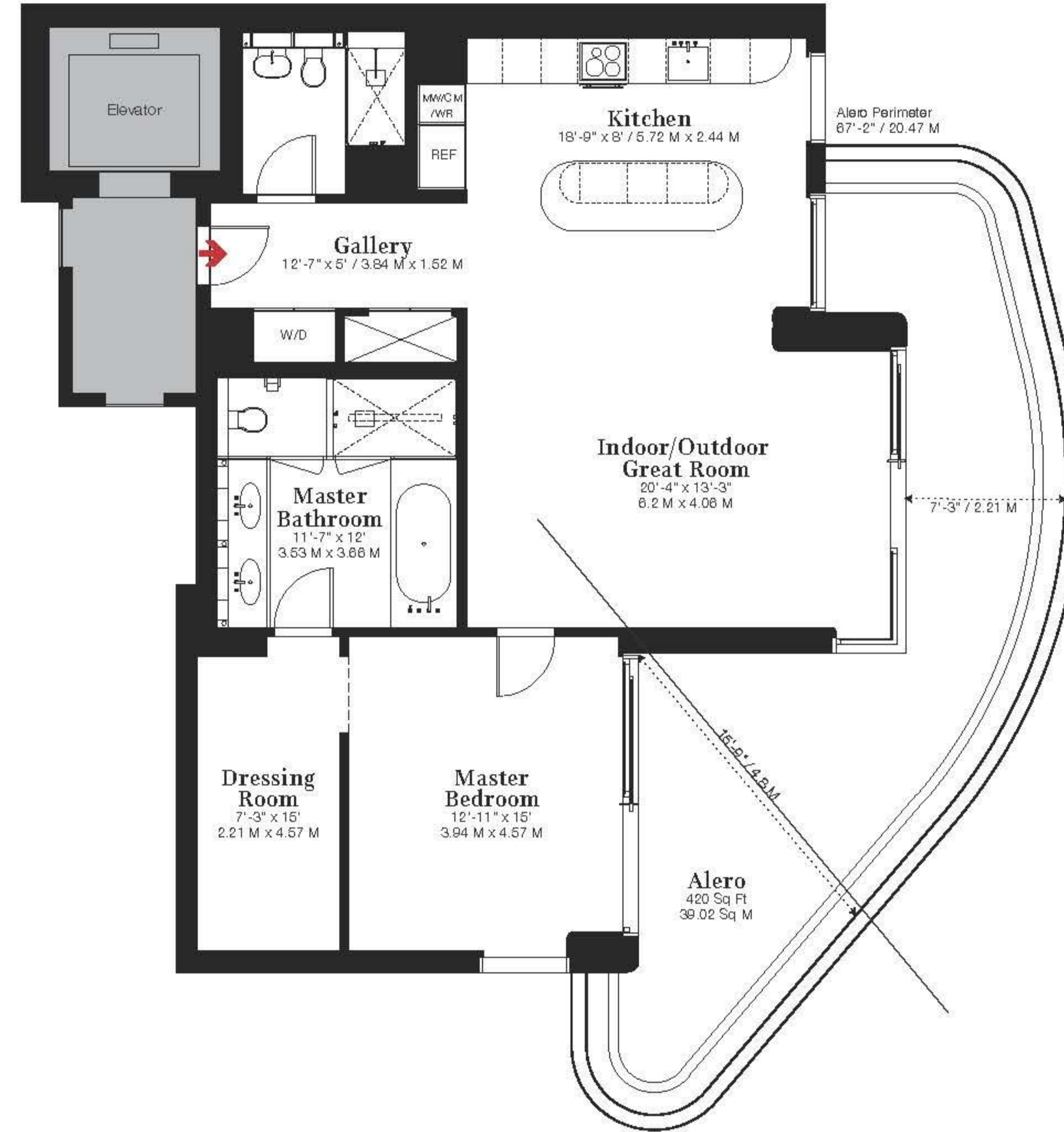
4-13D

1 BEDROOM / 2 BATHROOMS

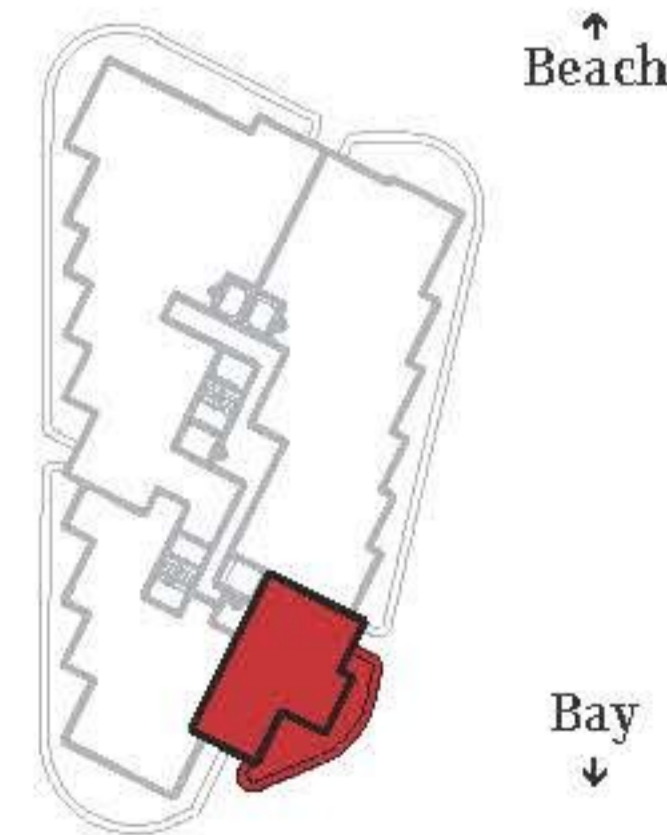
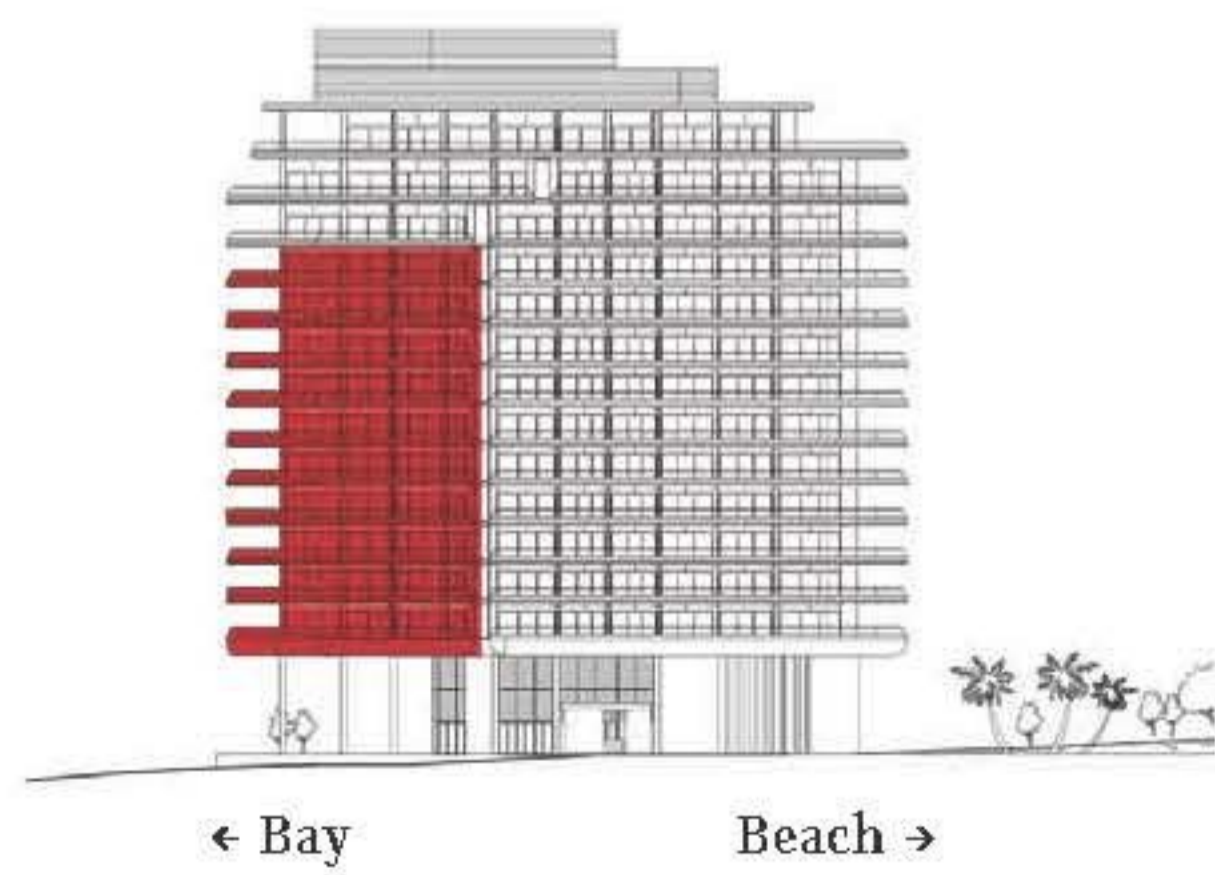
Total Living: 1,727 Sq Ft / 160.4 Sq M

Indoor: 1,307 Sq Ft / 121.4 Sq M

Alero: 420 Sq Ft / 39.0 Sq M



SOUTH FACADE



This is not an offer to sell, or solicitation of offers to buy, the condominium units in states where such offer or solicitation cannot be made. This offering is made only by the offering documents for the condominium and no statement should be relied upon if not made in the offering documents. Stated dimensions are measured to the exterior boundaries of the exterior walls and the centerline of interior demising walls and in fact vary from the dimensions that would be determined by using the description and definition of the "Unit" set forth in the Declaration (which generally only includes the interior airspace between the perimeter walls and excludes interior structural components). For your reference, the area of the Unit, determined in accordance with those defined unit boundaries, is 1,097 sq ft. Note that measurements of rooms set forth on this floor plan are generally taken at the greatest points of each given room (as if the room were a perfect rectangle), without regard for any cutouts. Accordingly, the area of the actual room will typically be smaller than the product obtained by multiplying the stated length times width. All dimensions are approximate and may vary with actual construction, and all floor plans and development plans are subject to change.

FAENA HOUSE

RESIDENCES BY
FOSTER + PARTNERS

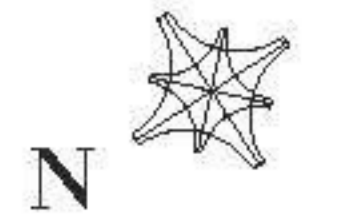
11-14CD

3 BEDROOMS + STUDY / 2 BATHROOMS / 1 POWDER ROOM

Total Living: 5,155 Sq Ft / 478.9 Sq M

Indoor: 3,545 Sq Ft / 329.3 Sq M

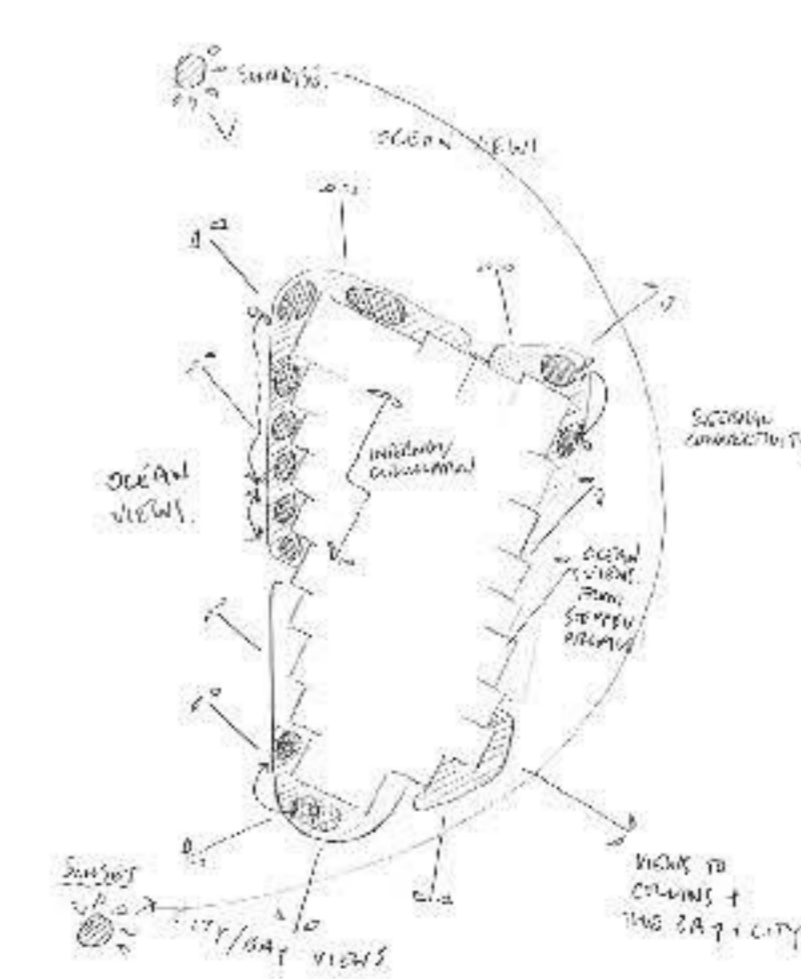
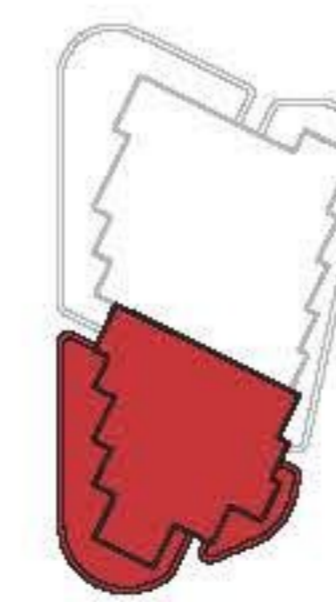
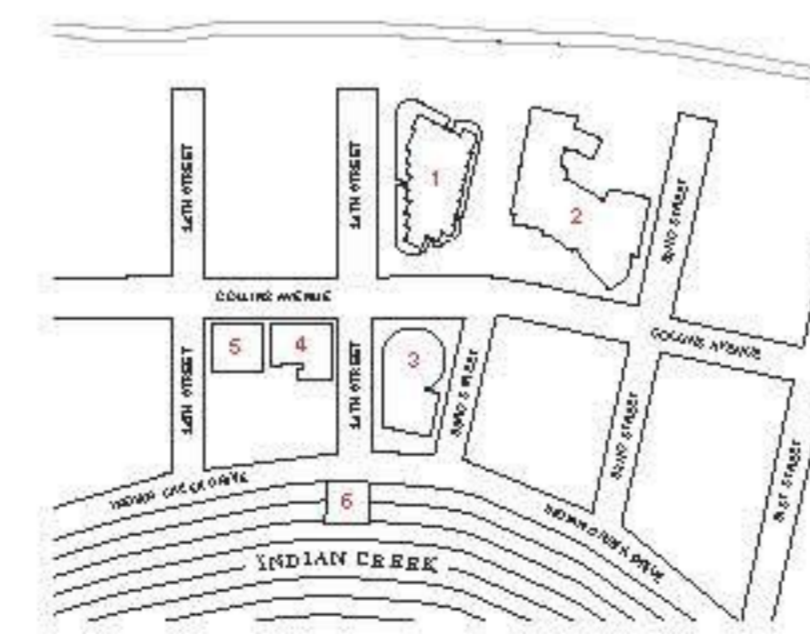
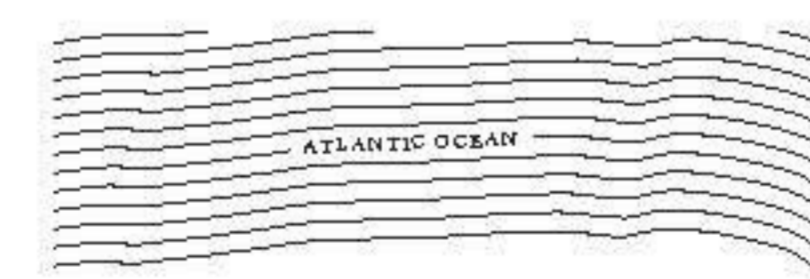
Alero: 1,610 Sq Ft / 149.6 Sq M



We imagined a house in the sky over the sea.
We imagined an island on an island.

We imagined a building like a ship.
We imagined a ship that sails through
the breeze—stationary
but moving gracefully into the future.

— ALAN FAENA



This is an architectural drawing of a proposed building. It is not intended to be used as a construction document. It is not intended to be used as a legal document. It is not intended to be used as a contract. It is not intended to be used as a warranty. It is not intended to be used as a guarantee. It is not intended to be used as a promise. It is not intended to be used as a statement of fact. It is not intended to be used as a statement of opinion. It is not intended to be used as a statement of intent. It is not intended to be used as a statement of belief. It is not intended to be used as a statement of faith. It is not intended to be used as a statement of hope. It is not intended to be used as a statement of charity. It is not intended to be used as a statement of kindness. It is not intended to be used as a statement of generosity. It is not intended to be used as a statement of compassion. It is not intended to be used as a statement of empathy. It is not intended to be used as a statement of understanding. It is not intended to be used as a statement of respect. It is not intended to be used as a statement of honor. It is not intended to be used as a statement of dignity. It is not intended to be used as a statement of pride. It is not intended to be used as a statement of honor. It is not intended to be used as a statement of dignity. It is not intended to be used as a statement of pride.

3/16" = 1'



FAENA HOUSE

RESIDENCES BY
FOSTER + PARTNERS

PH

16TH & 17TH FLOORS

4+ BEDROOMS / 5 BATHROOMS / 2 POWDER ROOMS

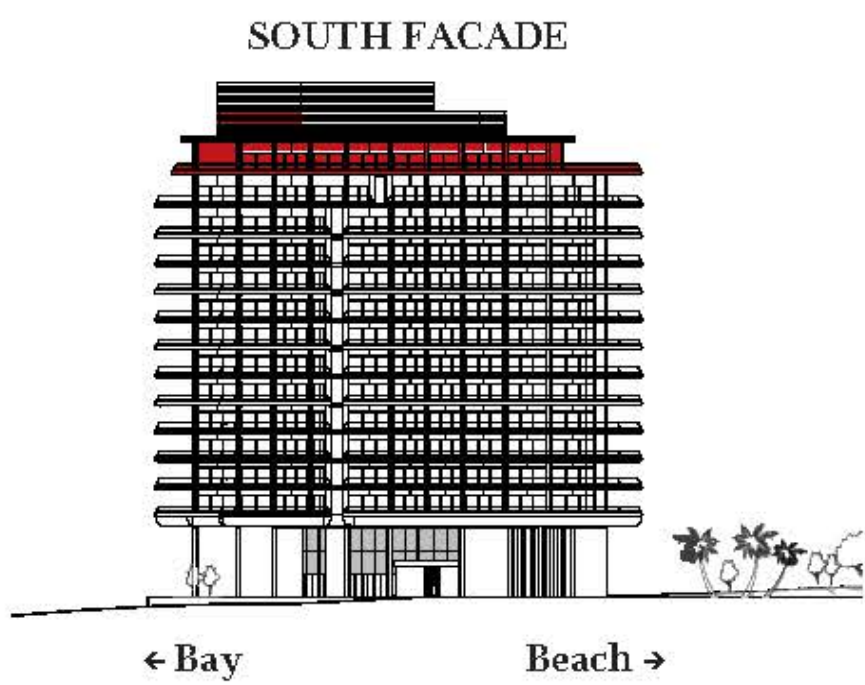
PRIVATE ELEVATOR TO ROOFTOP POOL / OUTDOOR KITCHENETTE


Total Living: 18,253 Sq Ft / 1,695.8 Sq M

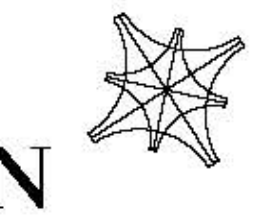
Indoor: 8,273 Sq Ft / 768.6 Sq M

Alero: 7,299 Sq Ft / 678.1 Sq M

Private Rooftop Pool: 2,681 Sq Ft / 249.1 Sq M



 This is not an offer to sell, or solicitation of offers to buy, the condominium units in states where such offer or solicitation cannot be made. This offering is made only by the offering documents for the condominium and no statement should be relied upon if not made in the offering documents. Stated dimensions are measured to the exterior boundaries of the exterior walls and the centerline of interior demising walls and in fact vary from the dimensions that would be determined by using the description and definition of the "Unit" set forth in the Declaration (which generally only includes the interior airspace between the perimeter walls and excludes interior structural components). For your reference, the area of the Unit, determined in accordance with those defined unit boundaries, is 7,247 sq ft. Note that measurements of rooms set forth on this floor plan are generally taken at the greatest points of each given room (as if the room were a perfect rectangle), without regard for any cutouts. Accordingly, the area of the actual room will typically be smaller than the product obtained by multiplying the stated length times width. All dimensions are approximate and may vary with actual construction, and all floor plans and development plans are subject to change.



PHA

15TH FLOOR

4+ BEDROOMS / 6 BATHROOMS / 1 POWDER ROOM

Total Living: 10,287 Sq Ft / 955.7 Sq M

Indoor: 6,400 Sq Ft / 594.6 Sq M

Alero: 3,887 Sq Ft / 361.1 Sq M

