



A SPLENDID SYNTHESIS OF SURF, SAND, SUN AND STYLE.

How does one improve on something as perfect as that which nature has already gifted us? It's rare, but once in a while it happens. And when it does the result is transformative, giving us an even deeper appreciation for the world around us.

Such is the case with Sabbia Beach, an extraordinary boutique property with a collection of 68 ultra-luxurious oceanfront residences, inextricable from their stunning surroundings and rising skyward above 200 linear feet of pristine South Florida shoreline. Sabbia Beach presents a lifestyle not merely on the ocean, but of the ocean. Surf, sand, sun and style all come together in perfect harmony at Sabbia Beach.



NATURAL UNSPOILED BEACH

From the Hillsboro Inlet, an uninterrupted strand of sun-soaked shoreline stretches three miles to the south. This is Pompano Beach, a blissful breath of fresh air just minutes from Miami, Fort Lauderdale, Boca Raton and Palm Beach.

Near the midpoint of this idyllic stretch of white sand is Sabbia Beach, the first new ultra-luxury oceanfront development in Pompano Beach in nearly a decade. With its ocean-inspired design and sweeping views of the calm turquoise waters, framed by white-sand beach and azure sky, there is no doubt that this is where you were meant to live.

POMPANO BEACH REDISCOVERED

Pompano Beach is becoming a vibrant, sophisticated, multidimensional destination with a three-mile stretch of pristine shoreline, restored dunes and tree-shaded playgrounds and exercise areas. A flurry of municipal development and improvements include a creative arts district and cultural center, and the Fishing Village – six oceanfront acres of shops and restaurants with a \$16 million state-of-the-art parking garage and a promenade linking the Intracoastal Waterway to the ocean and a newly renovated fishing pier.

This renaissance is not only positioning historic Pompano Beach as one of the country's top vacation home markets, but also as a hot location for those who seek to make this lavish hideaway their permanent home.

As the new face of Pompano Beach, Sabbia Beach is the perfect way to enjoy all this city has to offer. And just minutes away are Fort Lauderdale-Hollywood International Airport, Fort Lauderdale Executive Airport, shopping and fine dining on Las Olas Boulevard, an 18-hole Greg Norman-designed golf course, Whole Foods market and more.



FORT LAUDERDALE

A short drive south from Sabbia Beach is Fort Lauderdale's famed Las Olas Boulevard with its multitude of sidewalk cafés, shops, galleries, restaurants and more. Fort Lauderdale, known as the Venice of America for all of its scenic waterways and canals, is widely considered to be the yachting capital of the world. It is also home to a wonderful array of museums and attractions, including the Fort Lauderdale Museum of Art, Museum of Discovery and Science, Broward Center for the Performing Arts, and the F.A.T. (Flagler Arts and Technology) Village Arts District.





BOCA RATON

To the north of Sabia Beach, just across the Palm Beach County line, lies Boca Raton, known for its beautiful beaches, verdant golf courses, great museums and superb restaurants. The glittery, upscale Town Center at Boca Raton is home to more than 220 specialty shops and restaurants. And Mizner Park, also located in Boca Raton, is a popular spot for locals and visitors alike who come for shopping, dining, entertainment and live concerts.





BUILDING DESIGN

The developer of Sabbia Beach, Fernbrook Florida, wanted to create a design that both complements and enhances the building's location on what is the widest stretch of pristine Pompano Beach.

The beauty of the ocean inspires every aspect of Sabbia Beach, from its distinctive architectural design by the renowned Miami firm Arquitectonica, to the tasteful articulation of its interior social spaces by the prolific designers at Interiors by Steven G. and the site-sensitive landscape design by ArquitectonicaGEO.

The unique pattern and earth tone colors of the building's pedestal provide a natural backdrop to the sand, beach grass, shrubs and trees, while the light green glass of the tower enhances the color of the sea. The building's most distinctive architectural feature – its gently undulating façade and balconies – echoes the ripples on the ocean below.

LANDSCAPE DESIGN

Living at Sabbia Beach grants you an extraordinary privilege unavailable to others. Your back yard is a beautiful 200-foot-long white-sand beach that stretches 300 feet from shore to door, half of which is private beach for the exclusive use of Sabbia Beach residents.

The beachfront is enhanced by a natural, tropical landscape design created by ArquitectonicaGEO that takes its cue from its surroundings and works in perfect harmony with the building's organic form.

Sand dunes and a carefully curated blend of beach grass, palm trees and other native plants make the private beach and other outdoor areas appear as if they have been evolving naturally and untouched for years.



Artist's conceptual rendering.

BUILDING AMENITIES

Sabbia Beach is defined to most of the world by the broad-stroke brilliance of its design. To live in one of its 68 ultra-luxurious oceanfront residences, however, is to discover a wealth of more personal delights, revealed through the countless fine details designed to enhance every aspect of life on the ocean.

Upon arrival under the porte-cochère, you are welcomed into the warm embrace of oceanfront living. In the beautifully appointed, attended lobby and lavish social spaces, to the oceanfront swimming pool, residents' desires have been discreetly addressed.

Designed by Arquitectonica

Appointed public spaces by Interiors by Steven G.

Lush, tropical landscaping and dunes created by ArquitectonicaGEO

Stunning porte-cochère entrance

Boutique lobby with state-of-the-art security and concierge

Exotic oceanfront pool deck with beachfront, ultra-contemporary heated pool

Oceanfront Jacuzzi

World-class, state-of-the-art fitness center with direct ocean views

Spa with treatment rooms

His and her steam rooms and saunas

3,600-square-foot multipurpose social room including bar, catering kitchen, seating, game and poker tables and large-screen TV

24-hour valet parking

Private covered parking

Bike storage



RESIDENCE FINISHES/FEATURES

Sabbia Beach offers a boutique collection of only 68 two-, three- and four-bedroom residences, each featuring a spacious floor plan with floor-to-ceiling windows and generous balconies with spectacular views of the ocean, city and Intracoastal Waterway. Also available in this intimate collection are two stunning penthouse residences with soaring, double-height ceilings, and four unique terrace residences boasting up to 3,900 square feet of fully finished terrace space for gracious outdoor living.

Spacious floor plans

Direct elevator access with private and semi-private foyers leading into each residence

Double-door entry opening to expansive views

Floor-to-ceiling high-impact windows and sliding glass doors

Generous balconies with glass railings

Ocean, city and Intracoastal Waterway views

Large master suites with stunning views

Walk-in closets in master bedroom

Freestanding soaking tubs

Toto bidet toilet

Gourmet kitchens with chef's island and custom-designed Italian cabinetry

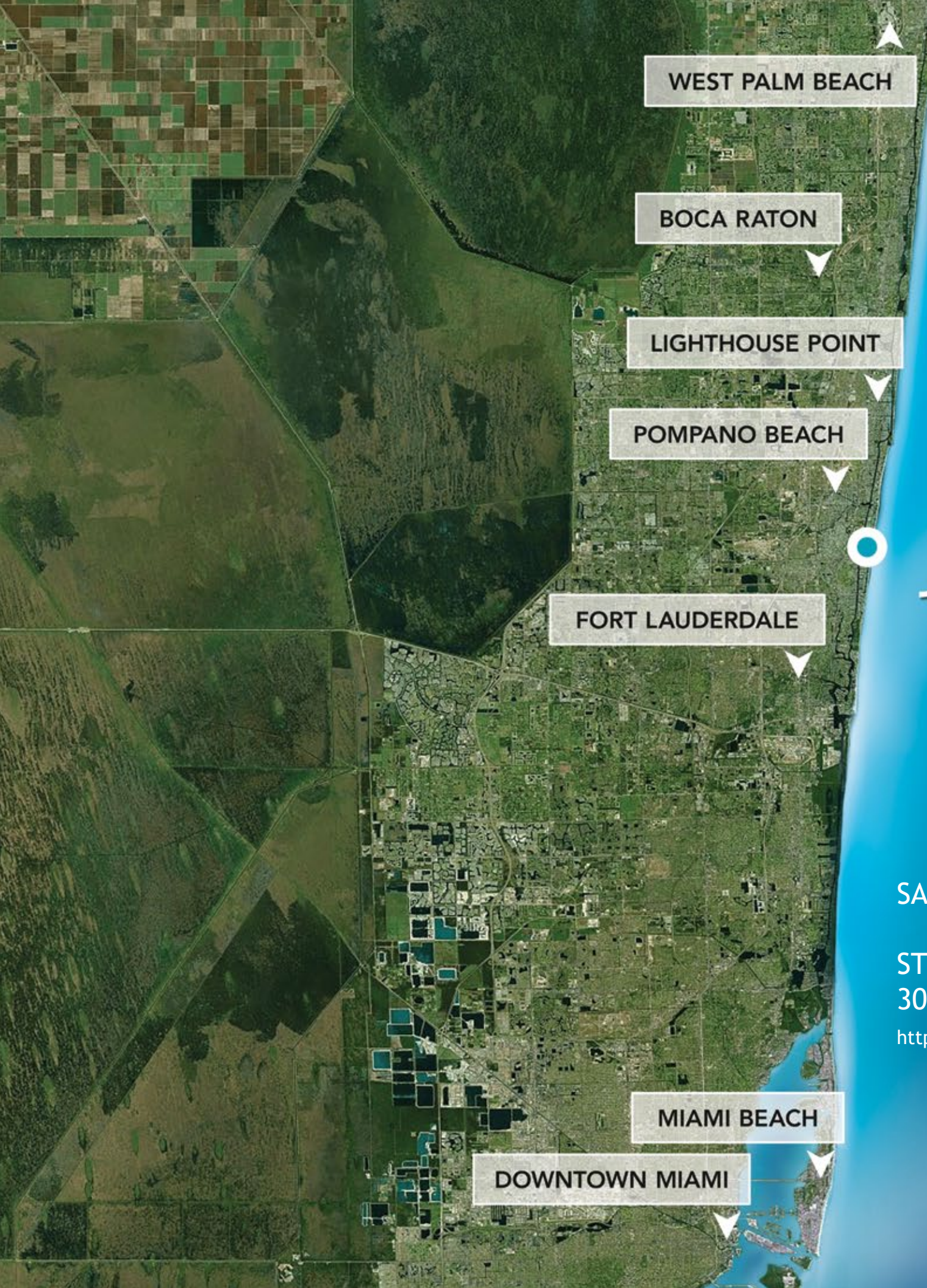
Stone countertops in kitchens and bathrooms

Miele induction cooktop range and concealed dishwasher

Miele wine cooler

Sub-Zero refrigerator/freezer

Full-size washers and dryers



WEST PALM BEACH

BOCA RATON

LIGHTHOUSE POINT

POMPANO BEACH

FORT LAUDERDALE

MIAMI BEACH

DOWNTOWN MIAMI

Sabbia

BEACH

SABBIA BEACH BUYERS CONTACT:

STEVE SAMUELS
305-494-1767

<https://www.condosandcondos.com/condos-for-sale/Pompano-Beach/Sabbia-Beach#contact>