

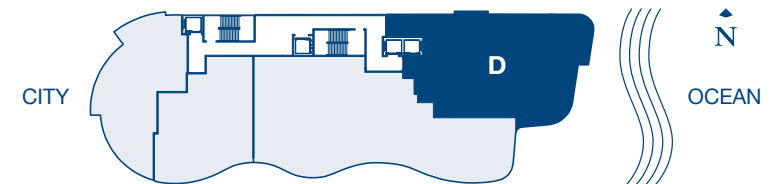
Residence D

3rd - 23rd Floor



2 BEDROOMS + DEN / 4.5 BATHS

RESIDENCE	2,819 SqF	261.89 M2
TERRACE	286 SqF	26.57 M2
TOTAL	3,105 SqF	288.46 M2



Stated dimensions are measured to the exterior boundaries of the exterior walls and the centerline of interior demising walls and in fact vary from the dimensions that would be determined by using the description and definition of the "Unit" set forth in the Declaration (which generally only includes the interior airspace between the perimeter walls and excludes interior structural components). For your reference, the area of the Unit, determined in accordance with those defined unit boundaries, is + or - 2,819 sq ft. for unit D. Note that measurements of rooms set forth on this floor plan are generally taken at the greatest points of each given room (as if the room were a perfect rectangle), without regard for any cutouts. Accordingly, the area of the actual room will typically be smaller than the product obtained by multiplying the stated length times width. All dimensions are approximate and may vary with actual construction, and all floor plans and development plans are subject to change. Unit includes a foyer, which is subject to easement rights in favor of others as provided in the condominium Declaration. All depictions of appliances, counters, soffits, floor coverings and other matters of detail, including, without limitation, items of finish and decoration, are conceptual only and are not necessarily included in each Unit.

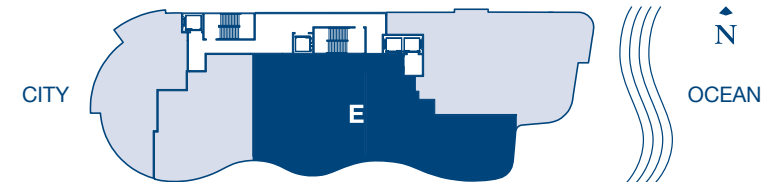
Residence E

5th - 23rd Floor



3 BEDROOMS + DEN / 5.5 BATHS

RESIDENCE	3,375 SqF	313.55 M2
TERRACE	869 SqF	80.73 M2
TOTAL	4,244 SqF	394.28 M2



Stated dimensions are measured to the exterior boundaries of the exterior walls and the centerline of interior demising walls and in fact vary from the dimensions that would be determined by using the description and definition of the "Unit" set forth in the Declaration (which generally only includes the interior airspace between the perimeter walls and excludes interior structural components). For your reference, the area of the Unit, determined in accordance with those defined unit boundaries, is + or - 3,375 sq ft. for Unit E. Note that measurements of rooms set forth on this floor plan are generally taken at the greatest points of each given room (as if the room were a perfect rectangle), without regard for any cutouts. Accordingly, the area of the actual room will typically be smaller than the product obtained by multiplying the stated length times width. All dimensions are approximate and may vary with actual construction, and all floor plans and development plans are subject to change. Unit includes a foyer, which is subject to easement rights in favor of others as provided in the condominium Declaration. All depictions of appliances, counters, soffits, floor coverings and other matters of detail, including, without limitation, items of finish and decoration, are conceptual only and are not necessarily included in each Unit.

Residence I

25th - 31st Floor



4 BEDROOMS / 6.5 BATHS

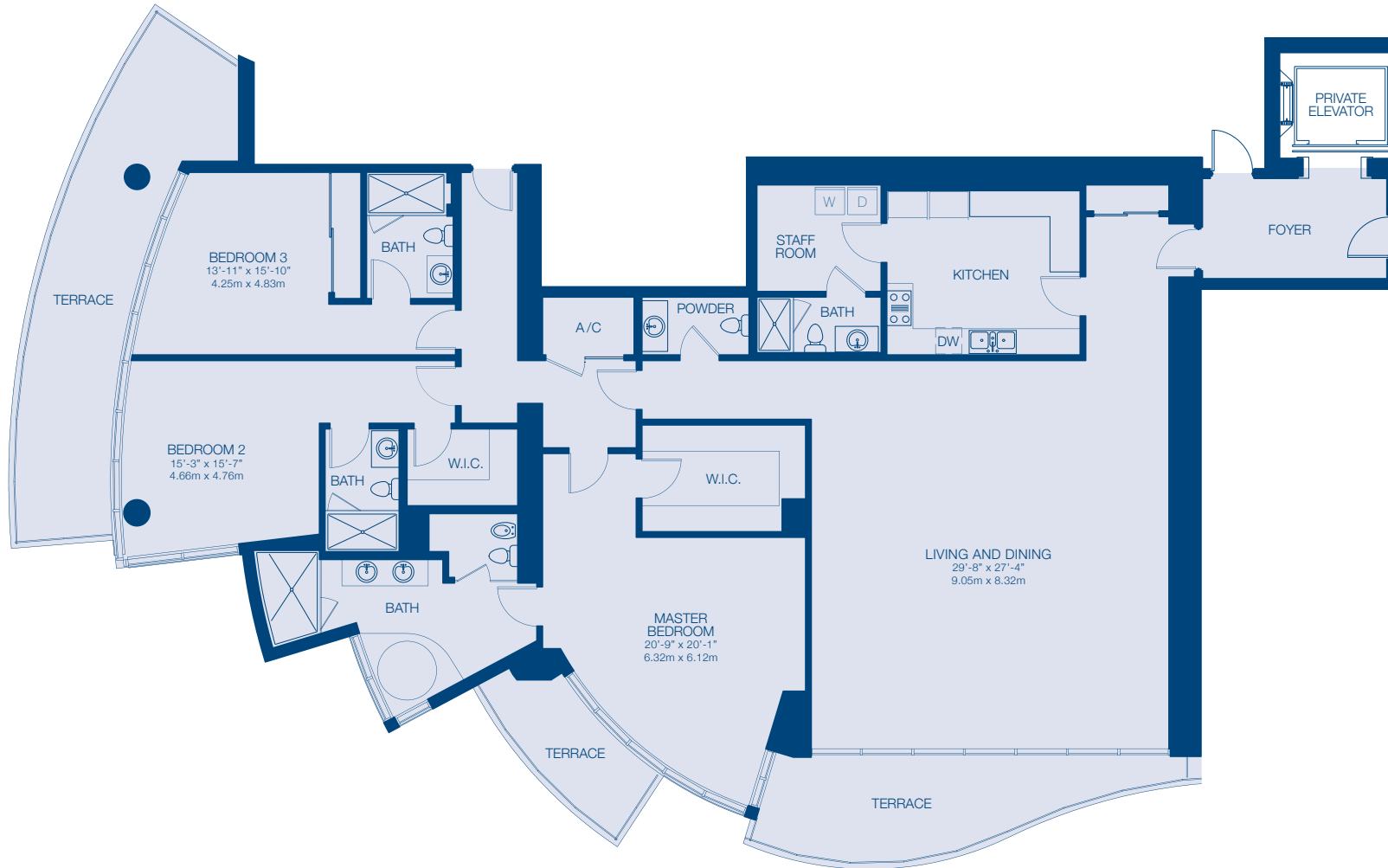
RESIDENCE	4,230 SqF	392.98 M2
TERRACE	980 SqF	91.04 M2
TOTAL	5,210 SqF	484.02 M2



Stated dimensions are measured to the exterior boundaries of the exterior walls and the centerline of interior demising walls and in fact vary from the dimensions that would be determined by using the description and definition of the "Unit" set forth in the Declaration (which generally only includes the interior airspace between the perimeter walls and excludes interior structural components). For your reference, the area of the Unit, determined in accordance with those defined unit boundaries, is + or - 4,230 sq. ft. for unit I. Note that measurements of rooms set forth on this floor plan are generally taken at the greatest points of each given room (as if the room were a perfect rectangle), without regard for any cutouts. Accordingly, the area of the actual room will typically be smaller than the product obtained by multiplying the stated length times width. All dimensions are approximate and may vary with actual construction, and all floor plans and development plans are subject to change. Unit includes a foyer, which is subject to easement rights in favor of others as provided in the condominium Declaration. All depictions of appliances, counters, soffits, floor coverings and other matters of detail, including, without limitation, items of finish and decoration, are conceptual only and are not necessarily included in each Unit.

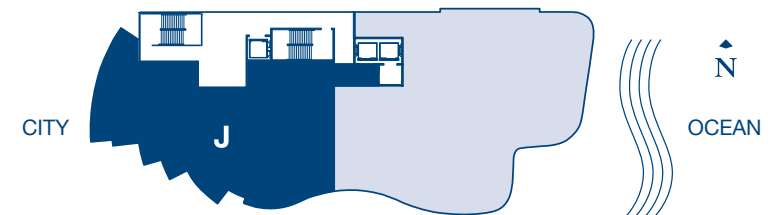
Residence J

26th - 31st Floor



3 BEDROOMS / 4.5 BATHS

RESIDENCE	3,257 SqF	302.59 M2
TERRACE	596 SqF	55.37 M2
TOTAL	3,853 SqF	357.96 M2



Stated dimensions are measured to the exterior boundaries of the exterior walls and the centerline of interior demising walls and in fact vary from the dimensions that would be determined by using the description and definition of the "Unit" set forth in the Declaration (which generally only includes the interior airspace between the perimeter walls and excludes interior structural components). For your reference, the area of the Unit, determined in accordance with those defined unit boundaries, is + or - 3,257 sq. ft. for unit J. Note that measurements of rooms set forth on this floor plan are generally taken at the greatest points of each given room (as if the room were a perfect rectangle), without regard for any cutouts. Accordingly, the area of the actual room will typically be smaller than the product obtained by multiplying the stated length times width. All dimensions are approximate and may vary with actual construction, and all floor plans and development plans are subject to change. Unit includes a foyer, which is subject to easement rights in favor of others as provided in the condominium Declaration. All depictions of appliances, counters, soffits, floor coverings and other matters of detail, including, without limitation, items of finish and decoration, are conceptual only and are not necessarily included in each Unit.

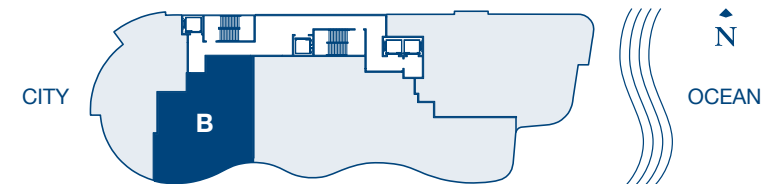
Residence B

3rd - 11th Floor



2 BEDROOMS + DEN / 2 BATHS

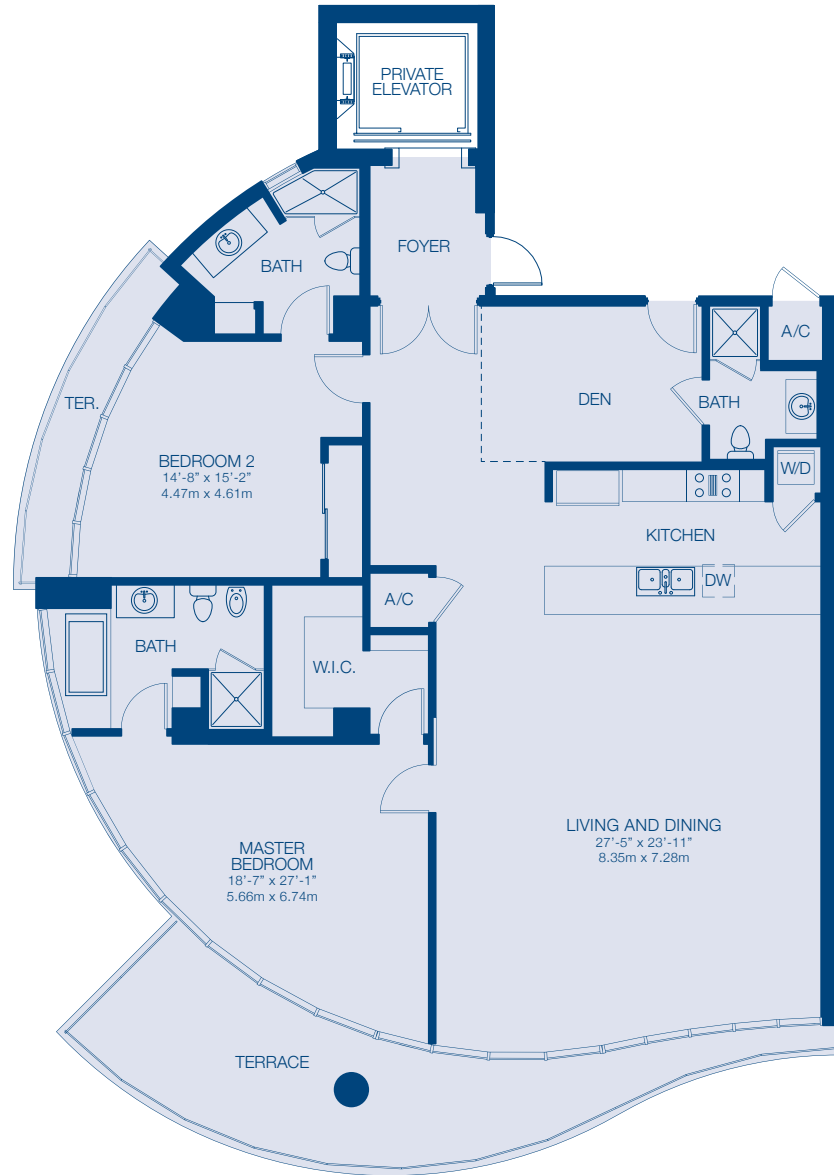
RESIDENCE	1,662 SqF	154.40 M2
TERRACE	249 SqF	23.13 M2
TOTAL	1,911 SqF	177.54 M2



Stated dimensions are measured to the exterior boundaries of the exterior walls and the centerline of interior demising walls and in fact vary from the dimensions that would be determined by using the description and definition of the "Unit" set forth in the Declaration (which generally only includes the interior airspace between the perimeter walls and excludes interior structural components). For your reference, the area of the Unit, determined in accordance with those defined unit boundaries, is + or - 1,662 sq ft. for unit B. Note that measurements of rooms set forth on this floor plan are generally taken at the greatest points of each given room (as if the room were a perfect rectangle), without regard for any cutouts. Accordingly, the area of the actual room will typically be smaller than the product obtained by multiplying the stated length times width. All dimensions are approximate and may vary with actual construction, and all floor plans and development plans are subject to change. Unit includes a foyer, which is subject to easement rights in favor of others as provided in the condominium Declaration. All depictions of appliances, counters, soffits, floor coverings and other matters of detail, including, without limitation, items of finish and decoration, are conceptual only and are not necessarily included in each Unit.

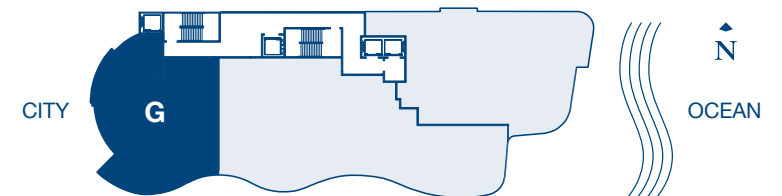
Residence G

14th - 23rd Floor



2 BEDROOMS + DEN / 3 BATHS

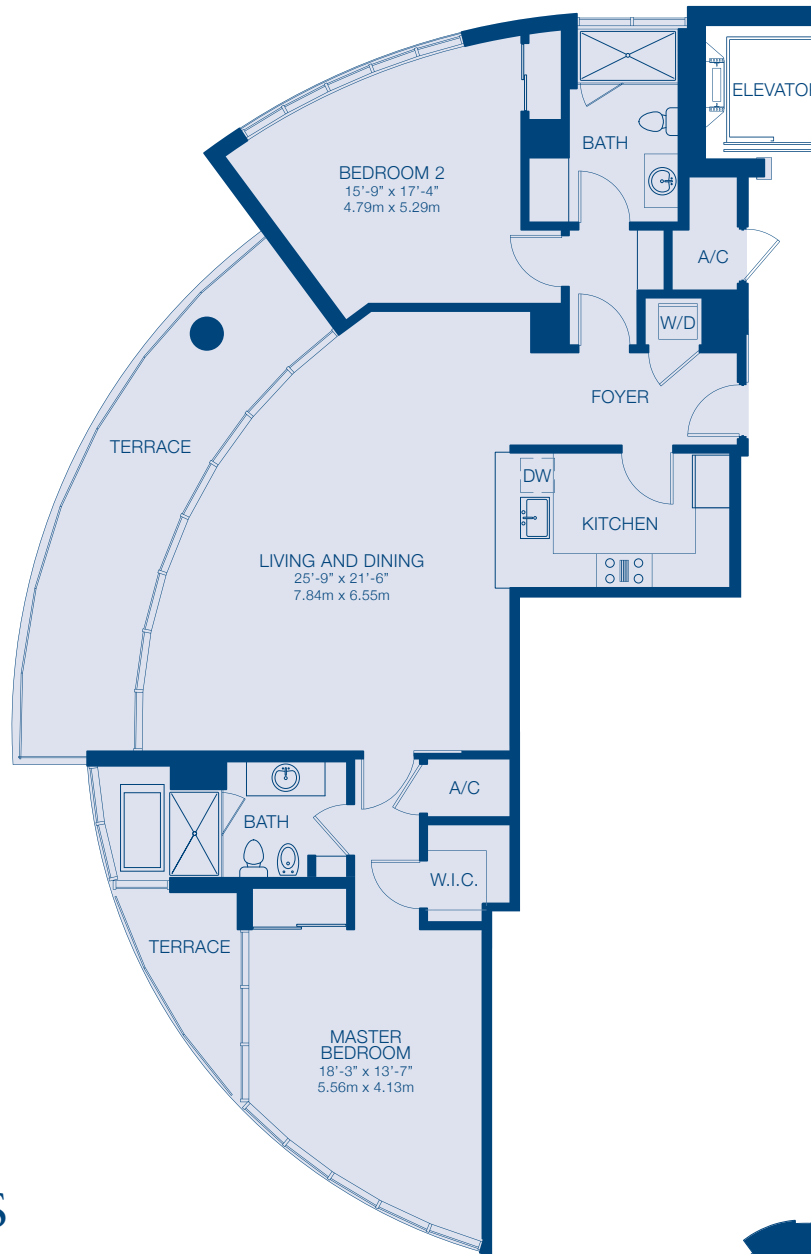
RESIDENCE	2,150 SqF	199.74 M2
TERRACE	278 SqF	25.83 M2
TOTAL	2,428 SqF	225.57 M2



Stated dimensions are measured to the exterior boundaries of the exterior walls and the centerline of interior demising walls and in fact vary from the dimensions that would be determined by using the description and definition of the "Unit" set forth in the Declaration (which generally only includes the interior airspace between the perimeter walls and excludes interior structural components). For your reference, the area of the Unit, determined in accordance with those defined unit boundaries, is + or - 1,557 sq ft. for unit G. Note that measurements of rooms set forth on this floor plan are generally taken at the greatest points of each given room (as if the room were a perfect rectangle), without regard for any cutouts. Accordingly, the area of the actual room will typically be smaller than the product obtained by multiplying the stated length times width. All dimensions are approximate and may vary with actual construction, and all floor plans and development plans are subject to change. Unit includes a foyer, which is subject to easement rights in favor of others as provided in the condominium Declaration. All depictions of appliances, counters, soffits, floor coverings and other matters of detail, including, without limitation, items of finish and decoration, are conceptual only and are not necessarily included in each Unit.

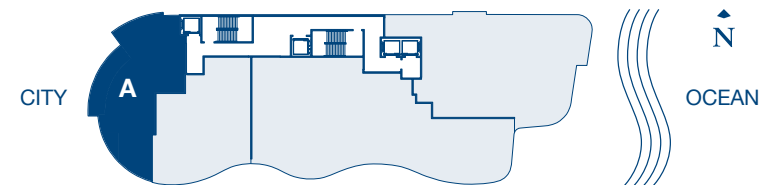
Residence A

3rd - 11th Floor



2 BEDROOMS / 2 BATHS

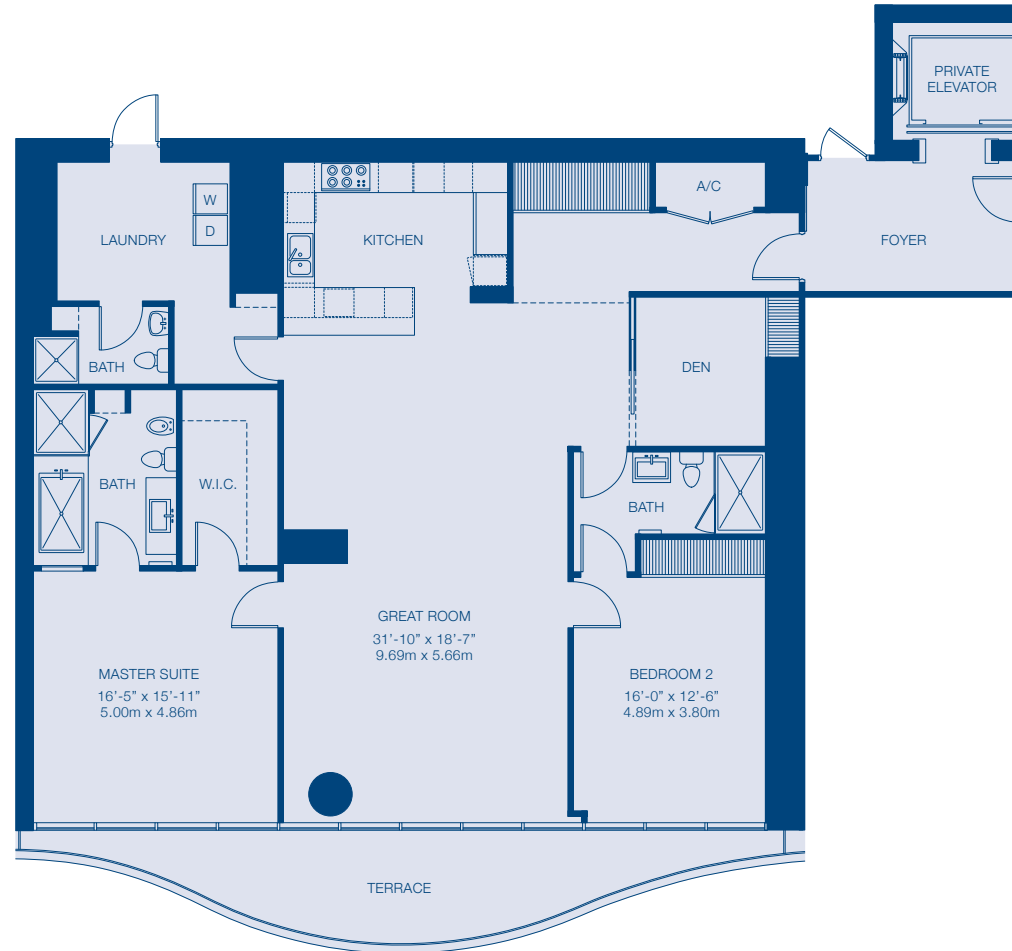
RESIDENCE	1,557 Sq. Ft.	144.65 Sq. Mt.
TERRACE	267 Sq. Ft.	24.81 Sq. Mt.
TOTAL	1,824 Sq. Ft.	169.46 Sq. Mt.



Stated dimensions are measured to the exterior boundaries of the exterior walls and the centerline of interior demising walls and in fact vary from the dimensions that would be determined by using the description and definition of the "Unit" set forth in the Declaration (which generally only includes the interior airspace between the perimeter walls and excludes interior structural components). For your reference, the area of the Unit, determined in accordance with those defined unit boundaries, is + or - 1,557 sq. ft. for unit A. Note that measurements of rooms set forth on this floor plan are generally taken at the greatest points of each given room (as if the room were a perfect rectangle), without regard for any cutouts. Accordingly, the area of the actual room will typically be smaller than the product obtained by multiplying the stated length times width. All dimensions are approximate and may vary with actual construction, and all floor plans and development plans are subject to change. Unit includes a foyer, which is subject to easement rights in favor of others as provided in the condominium Declaration. All depictions of appliances, counters, soffits, floor coverings and other matters of detail, including, without limitation, items of finish and decoration, are conceptual only and are not necessarily included in each Unit.

Residence L

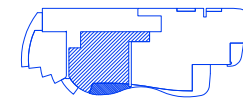
10th-15th Floors



2 BEDROOMS / 3 BATHS

RESIDENCE	2,029 SqF	188.44 M2
TERRACE	226 SqF	21.00 M2
TOTAL	2,255 SqF	209.44 M2

Collins Ave.



Park

Ocean



Stated dimensions are measured to the exterior boundaries of the exterior walls and the centerline of interior demising walls and in fact vary from the dimensions that would be determined by using the description and definition of the "Unit" set forth in the Declaration (which generally only includes the interior airspace between the perimeter walls and excludes interior structural components). For your reference, the area of the Unit, determined in accordance with those defined unit boundaries, is + or - 3,257 sq. ft. for unit J. Note that measurements of rooms set forth on this floor plan are generally taken at the greatest points of each given room (as if the room were a perfect rectangle), without regard for any cutouts. Accordingly, the area of the actual room will typically be smaller than the product obtained by multiplying the stated length times width. All dimensions are approximate and may vary with actual construction, and all floor plans and development plans are subject to change. Unit includes a foyer, which is subject to easement rights in favor of others as provided in the condominium Declaration. All depictions of appliances, counters, soffits, floor coverings and other matters of detail, including, without limitation, items of finish and decoration, are conceptual only and are not necessarily included in each Unit.

Residence M2

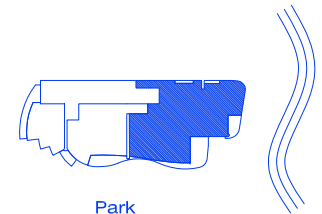
15th Floor



4 BEDROOMS / 6.5 BATHS

RESIDENCE	4,165 SqF	387.00 M2
TERRACE	872 SqF	81.00 M2
TOTAL	5,037 SqF	468.00 M2

Collins Ave.



Park

Ocean



Stated dimensions are measured to the exterior boundaries of the exterior walls and the centerline of interior demising walls and in fact vary from the dimensions that would be determined by using the description and definition of the "Unit" set forth in the Declaration (which generally only includes the interior airspace between the perimeter walls and excludes interior structural components). For your reference, the area of the Unit, determined in accordance with those defined unit boundaries, is + or - 3,257 sq. ft. for unit J. Note that measurements of rooms set forth on this floor plan are generally taken at the greatest points of each given room (as if the room were a perfect rectangle), without regard for any cutouts. Accordingly, the area of the actual room will typically be smaller than the product obtained by multiplying the stated length times width. All dimensions are approximate and may vary with actual construction, and all floor plans and development plans are subject to change. Unit includes a foyer, which is subject to easement rights in favor of others as provided in the condominium Declaration. All depictions of appliances, counters, soffits, floor coverings and other matters of detail, including, without limitation, items of finish and decoration, are conceptual only and are not necessarily included in each Unit.

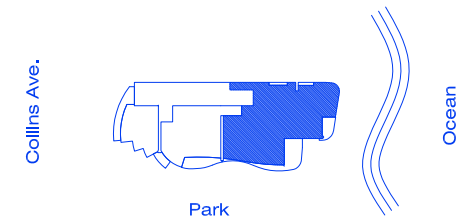
Residence M3

10th Floor



3 BEDROOMS + DEN / 5 BATHS

RESIDENCE	4,165 SqF	387.00 M2
TERRACE	872 SqF	81.00 M2
TOTAL	5,037 SqF	468.00 M2



Stated dimensions are measured to the exterior boundaries of the exterior walls and the centerline of interior demising walls and in fact vary from the dimensions that would be determined by using the description and definition of the "Unit" set forth in the Declaration (which generally only includes the interior airspace between the perimeter walls and excludes interior structural components). For your reference, the area of the Unit, determined in accordance with those defined unit boundaries, is + or - 3,257 sq. ft. for unit J. Note that measurements of rooms set forth on this floor plan are generally taken at the greatest points of each given room (as if the room were a perfect rectangle), without regard for any cutouts. Accordingly, the area of the actual room will typically be smaller than the product obtained by multiplying the stated length times width. All dimensions are approximate and may vary with actual construction, and all floor plans and development plans are subject to change. Unit includes a foyer, which is subject to easement rights in favor of others as provided in the condominium Declaration. All depictions of appliances, counters, soffits, floor coverings and other matters of detail, including, without limitation, items of finish and decoration, are conceptual only and are not necessarily included in each Unit.

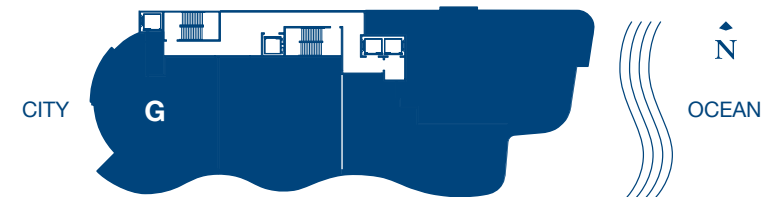
Penthouse Villa

32nd Floor



4 BEDROOMS + DEN / 5 BATHS / 2 HALF BATHS

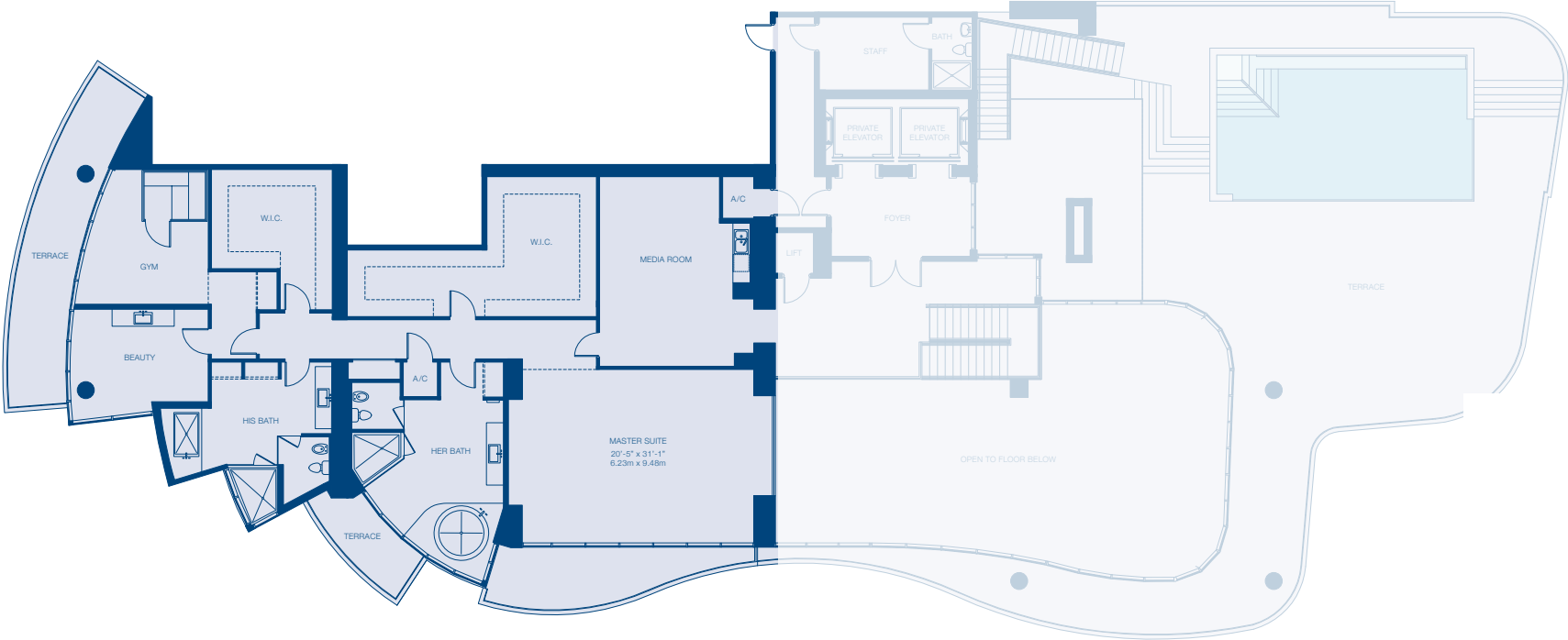
RESIDENCE	9,050 SqF	840.80 M2
TERRACE	4,523 SqF	420.20 M2
TOTAL	13,573 SqF	1,261.00 M2



Stated dimensions are measured to the exterior boundaries of the exterior walls and the centerline of interior demising walls and in fact vary from the dimensions that would be determined by using the description and definition of the "Unit" set forth in the Declaration (which generally only includes the interior airspace between the perimeter walls and excludes interior structural components). For your reference, the area of the Unit, determined in accordance with those defined unit boundaries, is + or - 3,257 sq. ft. for unit J. Note that measurements of rooms set forth on this floor plan are generally taken at the greatest points of each given room (as if the room were a perfect rectangle), without regard for any cutouts. Accordingly, the area of the actual room will typically be smaller than the product obtained by multiplying the stated length times width. All dimensions are approximate and may vary with actual construction, and all floor plans and development plans are subject to change. Unit includes a foyer, which is subject to easement rights in favor of others as provided in the condominium Declaration. All depictions of appliances, counters, soffits, floor coverings and other matters of detail, including, without limitation, items of finish and decoration, are conceptual only and are not necessarily included in each Unit.

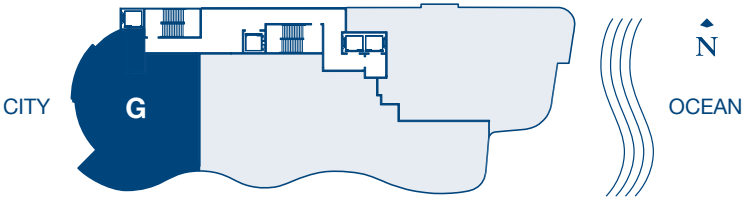
Penthouse Villa

33rd Floor



4 BEDROOMS + DEN / 5 BATHS / 2 HALF BATHS

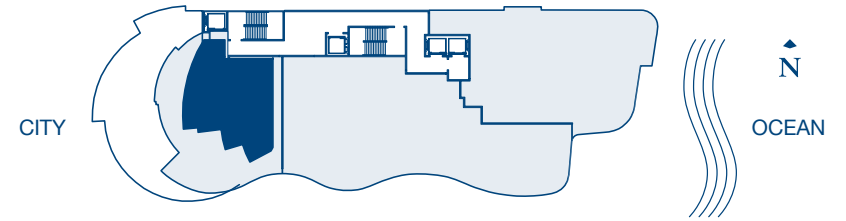
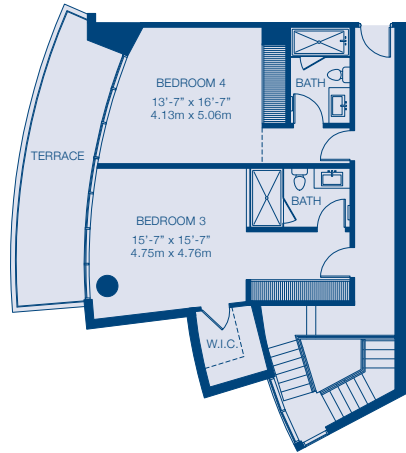
RESIDENCE	9,050 SqF	840.80 M2
TERRACE	4,523 SqF	420.20 M2
TOTAL	13,573 SqF	1,261.00 M2



Stated dimensions are measured to the exterior boundaries of the exterior walls and the centerline of interior demising walls and in fact vary from the dimensions that would be determined by using the description and definition of the "Unit" set forth in the Declaration (which generally only includes the interior airspace between the perimeter walls and excludes interior structural components). For your reference, the area of the Unit, determined in accordance with those defined unit boundaries, is + or - 3,257 sq ft. for unit J. Note that measurements of rooms set forth on this floor plan are generally taken at the greatest points of each given room (as if the room were a perfect rectangle), without regard for any cutouts. Accordingly, the area of the actual room will typically be smaller than the product obtained by multiplying the stated length times width. All dimensions are approximate and may vary with actual construction, and all floor plans and development plans are subject to change. Unit includes a foyer, which is subject to easement rights in favor of others as provided in the condominium Declaration. All depictions of appliances, counters, soffits, floor coverings and other matters of detail, including, without limitation, items of finish and decoration, are conceptual only and are not necessarily included in each Unit.

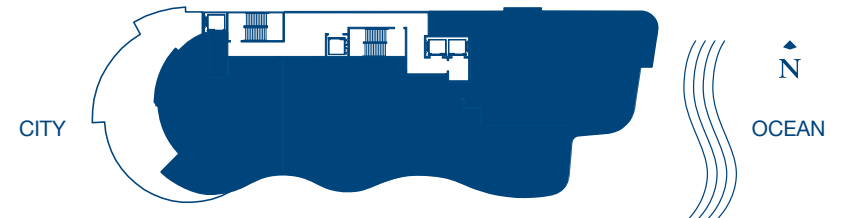
Sky Villa

24th Floor



4 BEDROOMS + DEN / 7.5 BATHS

RESIDENCE	8,423 SqF	782.50 M2
TERRACE	2,402 SqF	223.15 M2
TOTAL	10,825 SqF	1,005.65 M2



Stated dimensions are measured to the exterior boundaries of the exterior walls and the centerline of interior demising walls and in fact vary from the dimensions that would be determined by using the description and definition of the "Unit" set forth in the Declaration (which generally only includes the interior airspace between the perimeter walls and excludes interior structural components). For your reference, the area of the Unit, determined in accordance with those defined unit boundaries, is + or - 3,257 sq ft. for unit J. Note that measurements of rooms set forth on this floor plan are generally taken at the greatest points of each given room (as if the room were a perfect rectangle), without regard for any cutouts. Accordingly, the area of the actual room will typically be smaller than the product obtained by multiplying the stated length times width. All dimensions are approximate and may vary with actual construction, and all floor plans and development plans are subject to change. Unit includes a foyer, which is subject to easement rights in favor of others as provided in the condominium Declaration. All depictions of appliances, counters, soffits, floor coverings and other matters of detail, including, without limitation, items of finish and decoration, are conceptual only and are not necessarily included in each Unit.